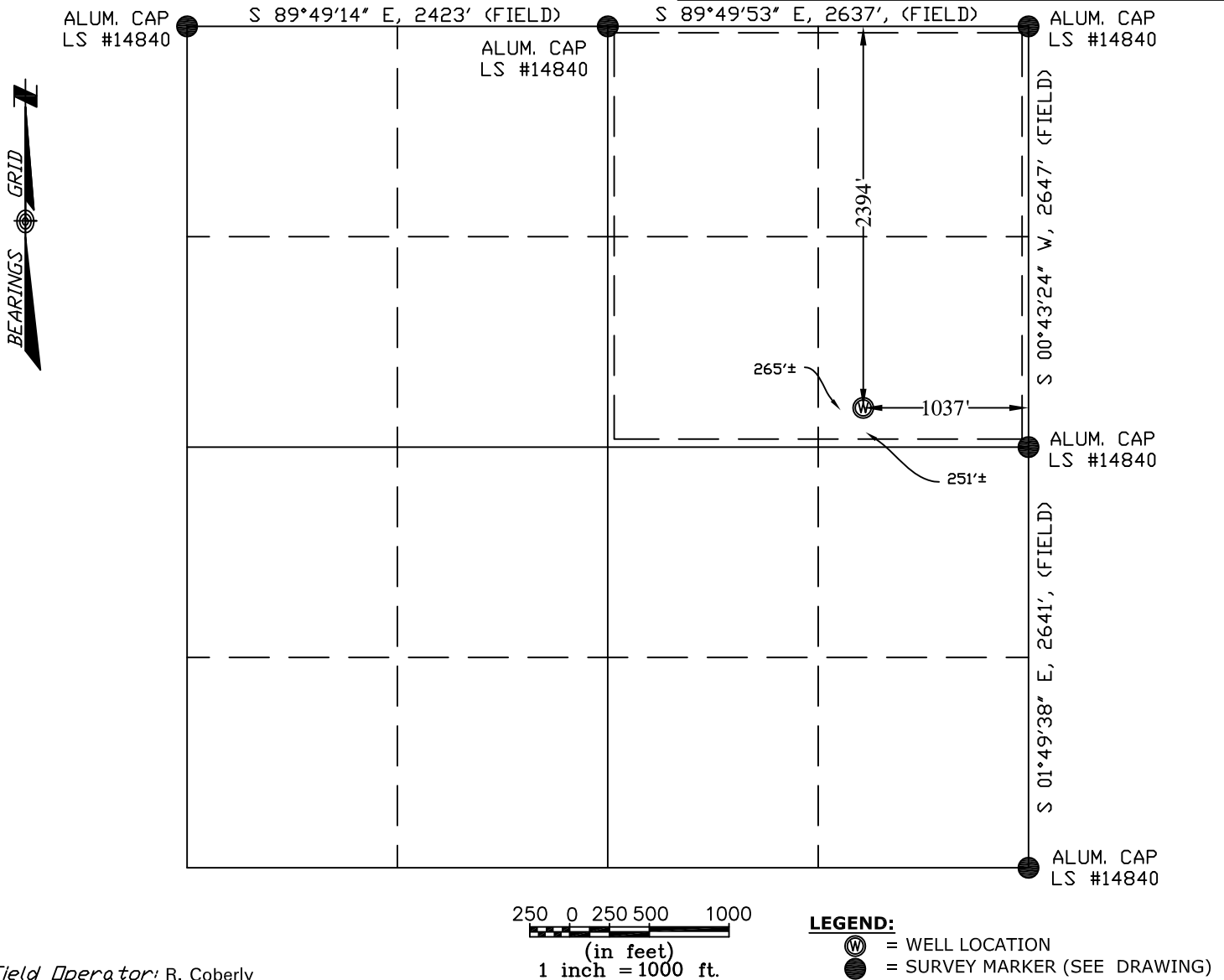


COLORADO WELL LOCATION

OPERATOR: Pioneer Natural Resources		WELL NAME: Haught 42-30	
SECTION 30 TOWNSHIP 32 S, RANGE 67 W OF THE 6TH P.M., IN LAS ANIMAS COUNTY			
ACTUAL FOOTAGE OF WELL LOCATION: 1037 feet from the EAST line and 2394 feet from the NORTH line.		GROUND ELEV. (NGVD29): 7826'	
BASIS OF BEARING: GPS Observations	BASIS OF ELEVATION: GPS Observations	PDOP: 8.2	
SURFACE USE: Timber	DATE STAKED: July 23, 2008	LAT: N 37.23035°	LONG: W 104.92343° (NAD27)
		LAT: N 37.23036°	LONG: W 104.92398° (NAD83)



NOTE:
ALL WELL LOCATIONS AND ELEVATIONS DERIVED FROM OBSERVED GPS DATA AND DIFFERENTIALY CORRECTED TO CORS STATION PUEBLO 1 (PID #AJ6946) AND MEET AND/OR EXCEED COGCC RULE 303c AND RULE 215a-h.

NO VISIBLE IMPROVEMENTS WITHIN 200 FEET OF PROPOSED WELLHEAD UNLESS NOTED OTHERWISE.

DISTANCES ARE MEASURED AT 90° (NINTY DEGREES) FROM SAID SECTION LINES TO THE WELL LOCATION.

DESIRED PDOP MAY NOT BE OBTAINED DUE TO NATIVE CONDITIONS OF SITE.

SHIELDS SURVEY L^{td}. C^o. Raton, New Mexico 87740
(505)445-1232 8124