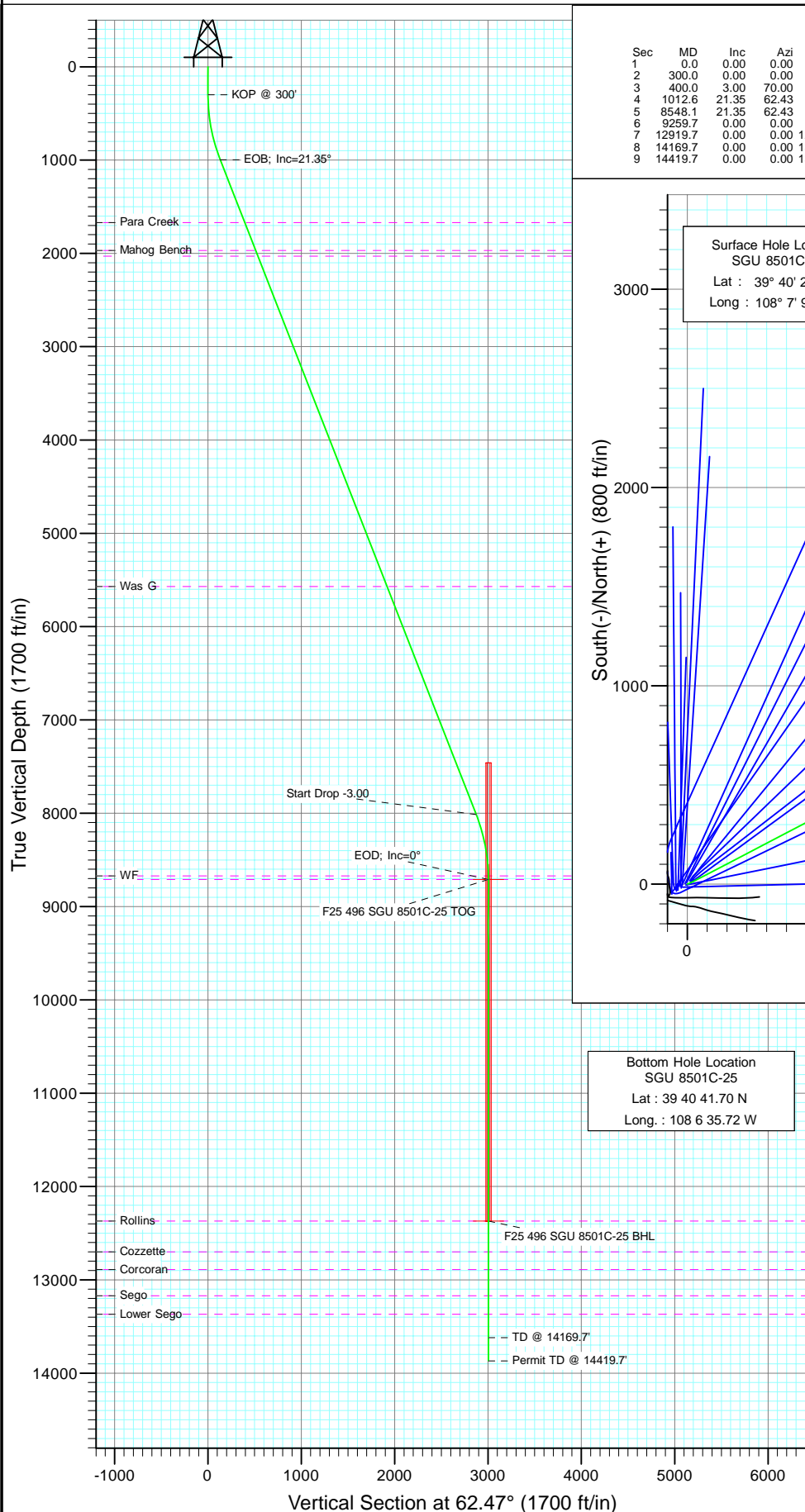
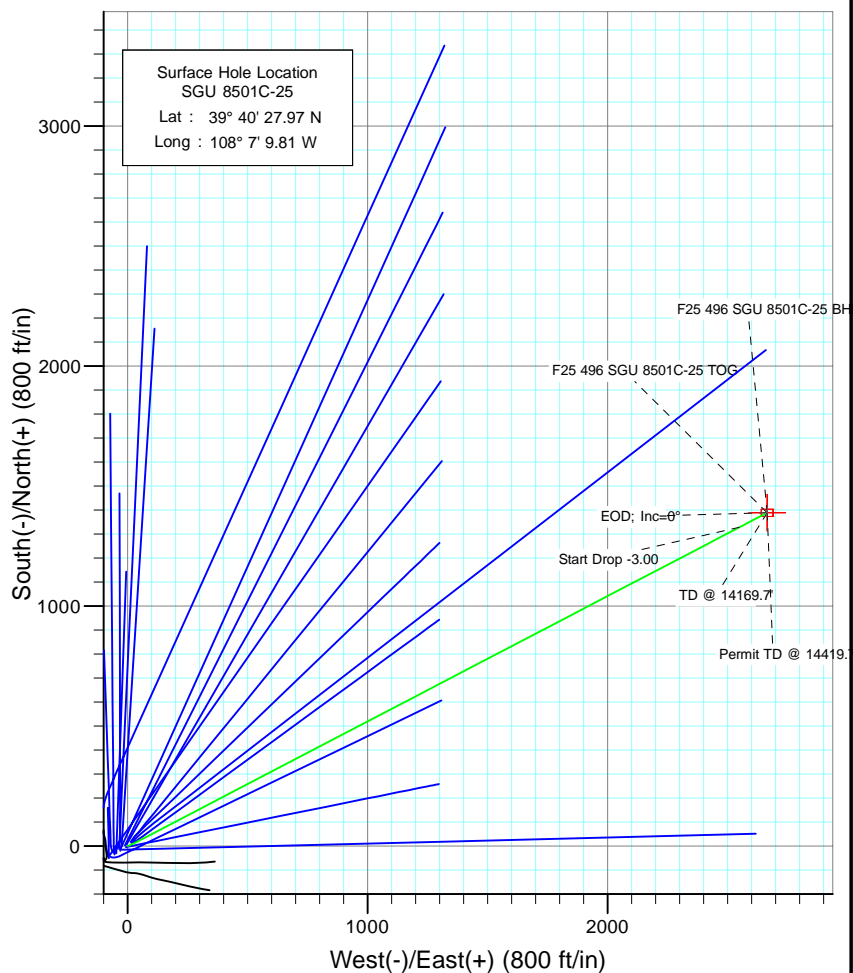




Project: Story Gulch
Site: F25 496
Well: SGU 8501C-25
Wellbore: DD
Design: Plan #1



SECTION DETAILS											
Sec	MD	Inc	Azi	TVD	+N/-S	+E/-W	Dleg	TFace	Vsect	Target	
1	0.0	0.00	0.00	0.0	0.0	0.0	0.00	0.00	0.0		
2	300.0	0.00	0.00	300.0	0.0	0.0	0.00	0.00	0.0		
3	400.0	3.00	70.00	400.0	0.9	2.5	3.00	70.00	2.6		
4	1012.6	21.35	62.43	996.2	58.5	117.3	3.00	-8.75	131.1		
5	8548.1	21.35	62.43	8014.8	1328.3	2548.9	0.00	0.00	2874.2		
6	9259.7	0.00	0.00	8710.0	1388.9	2665.1	3.00	180.00	3005.3		
7	12919.7	0.00	0.00	12370.0	1388.9	2665.1	0.00	0.00	3005.3		
8	14169.7	0.00	0.00	13620.0	1388.9	2665.1	0.00	0.00	3005.3		
9	14419.7	0.00	0.00	13870.0	1388.9	2665.1	0.00	0.00	3005.3		



Bottom Hole Location
SGU 8501C-25
Lat : 39 40 41.70 N
Long. : 108 6 35.72 W



Azimuths to True North
Magnetic North: 10.56°

Magnetic Field
Strength: 52465.3nT
Dip Angle: 65.91°
Date: 3/23/2010
Model: IGRF200510

FORMATION TOP DETAILS

TVDPath	MDPath	Formation
1670.0	1736.0	Para Creek
1970.0	2058.1	Mahog Bench
2030.0	2122.5	Base B
5570.0	5923.3	Was G
8670.0	9219.7	WF
8710.0	9259.7	TOG
12370.0	12919.7	Rollins
12700.0	13249.7	Cozzette
12890.0	13439.7	Corcoran
13170.0	13719.7	Sego
13370.0	13919.7	Lower Sego

DESIGN DETAILS: Plan #1
105XXX; BH
KBE @ 8320.0ft (Original Well Elev)

Target	Azimuth	Origin	N/S	E/W	From TVD
F25 496 SGU 8501C-25 BHL	62.47	Slot	0.0	0.0	0.0

Cathedral Energy Services

Planning Report

Database:	EDM 5000.1 US Multi Users DB	Local Co-ordinate Reference:	Well SGU 8501C-25
Company:	EnCana Oil & Gas (USA) Inc	TVD Reference:	KBE @ 8320.0ft (Original Well Elev)
Project:	Story Gulch	MD Reference:	KBE @ 8320.0ft (Original Well Elev)
Site:	F25 496	North Reference:	True
Well:	SGU 8501C-25	Survey Calculation Method:	Minimum Curvature
Wellbore:	DD		
Design:	Plan #1		

Project	Story Gulch		
Map System:	US State Plane 1983	System Datum:	Mean Sea Level
Geo Datum:	North American Datum 1983		
Map Zone:	Colorado Central Zone		

Site		F25 496			
Site Position:		Northing:	1,681,091.06 ft	Latitude:	39° 40' 27.10 N
From:	Lat/Long	Easting:	2,262,632.54 ft	Longitude:	108° 7' 11.76 W
Position Uncertainty:	0.0 ft	Slot Radius:	13.200 in	Grid Convergence:	-1.65 °

Well	SGU 8501C-25					
Well Position	+N/-S	0.0 ft	Northing:	1,681,174.90 ft	Latitude:	39° 40' 27.97 N
	+E/-W	0.0 ft	Easting:	2,262,787.46 ft	Longitude:	108° 7' 9.81 W
Position Uncertainty		0.0 ft	Wellhead Elevation:	ft	Ground Level:	8,298.0 ft

Wellbore	DD				
Magnetics	Model Name	Sample Date	Declination	Dip Angle	Field Strength
			(°)	(°)	(nT)
	IGRF200510	3/23/2010	10.57	65.91	52,465

Design	Plan #1			
Audit Notes:				
Version:	Phase:	PLAN	Tie On Depth:	0.0
Vertical Section:	Depth From (TVD)	+N/-S	+E/-W	Direction
	(ft)	(ft)	(ft)	(°)
	0.0	0.0	0.0	62.47

Plan Sections										
Measured Depth (ft)	Inclination (°)	Azimuth (°)	Vertical Depth (ft)	+N/-S (ft)	+E/-W (ft)	Dogleg Rate (°/100ft)	Build Rate (°/100ft)	Turn Rate (°/100ft)	TFO (°)	Target
0.0	0.00	0.00	0.0	0.0	0.0	0.00	0.00	0.00	0.00	
300.0	0.00	0.00	300.0	0.0	0.0	0.00	0.00	0.00	0.00	
400.0	3.00	70.00	400.0	0.9	2.5	3.00	3.00	0.00	70.00	
1,012.6	21.35	62.43	996.2	58.5	117.3	3.00	3.00	-1.24	-8.75	
8,548.1	21.35	62.43	8,014.8	1,328.3	2,548.9	0.00	0.00	0.00	0.00	
9,259.7	0.00	0.00	8,710.0	1,388.9	2,665.1	3.00	-3.00	0.00	180.00	F25 496 SGU 8501C-
12,919.7	0.00	0.00	12,370.0	1,388.9	2,665.1	0.00	0.00	0.00	0.00	F25 496 SGU 8501C-
14,169.7	0.00	0.00	13,620.0	1,388.9	2,665.1	0.00	0.00	0.00	0.00	
14,419.7	0.00	0.00	13,870.0	1,388.9	2,665.1	0.00	0.00	0.00	0.00	

Cathedral Energy Services

Planning Report

Database:	EDM 5000.1 US Multi Users DB	Local Co-ordinate Reference:	Well SGU 8501C-25
Company:	EnCana Oil & Gas (USA) Inc	TVD Reference:	KBE @ 8320.0ft (Original Well Elev)
Project:	Story Gulch	MD Reference:	KBE @ 8320.0ft (Original Well Elev)
Site:	F25 496	North Reference:	True
Well:	SGU 8501C-25	Survey Calculation Method:	Minimum Curvature
Wellbore:	DD		
Design:	Plan #1		

Planned Survey

Measured Depth (ft)	Inclination (°)	Azimuth (°)	Vertical Depth (ft)	+N/-S (ft)	+E/-W (ft)	Vertical Section (ft)	Dogleg Rate (°/100ft)	Build Rate (°/100ft)	Comments / Formations
0.0	0.00	0.00	0.0	0.0	0.0	0.0	0.00	0.00	
100.0	0.00	0.00	100.0	0.0	0.0	0.0	0.00	0.00	
200.0	0.00	0.00	200.0	0.0	0.0	0.0	0.00	0.00	
300.0	0.00	0.00	300.0	0.0	0.0	0.0	0.00	0.00	KOP @ 300'
400.0	3.00	70.00	400.0	0.9	2.5	2.6	3.00	3.00	
500.0	5.98	65.62	499.6	3.9	9.7	10.4	3.00	2.98	
600.0	8.98	64.15	598.8	9.5	21.4	23.4	3.00	2.99	
700.0	11.97	63.41	697.1	17.5	37.7	41.6	3.00	3.00	
800.0	14.97	62.97	794.3	28.1	58.5	64.9	3.00	3.00	
900.0	17.97	62.67	890.2	41.0	83.7	93.2	3.00	3.00	
1,000.0	20.97	62.45	984.5	56.4	113.3	126.5	3.00	3.00	
1,012.6	21.35	62.43	996.2	58.5	117.3	131.1	3.00	3.00	EOB; Inc=21.35°
1,100.0	21.35	62.43	1,077.6	73.2	145.5	162.9	0.00	0.00	
1,200.0	21.35	62.43	1,170.8	90.1	177.8	199.3	0.00	0.00	
1,300.0	21.35	62.43	1,263.9	106.9	210.1	235.7	0.00	0.00	
1,400.0	21.35	62.43	1,357.1	123.8	242.4	272.1	0.00	0.00	
1,500.0	21.35	62.43	1,450.2	140.6	274.6	308.5	0.00	0.00	
1,600.0	21.35	62.43	1,543.3	157.5	306.9	344.9	0.00	0.00	
1,700.0	21.35	62.43	1,636.5	174.3	339.2	381.3	0.00	0.00	
1,736.0	21.35	62.43	1,670.0	180.4	350.8	394.4	0.00	0.00	Para Creek
1,800.0	21.35	62.43	1,729.6	191.2	371.4	417.7	0.00	0.00	
1,900.0	21.35	62.43	1,822.8	208.0	403.7	454.1	0.00	0.00	
2,000.0	21.35	62.43	1,915.9	224.9	436.0	490.5	0.00	0.00	
2,058.1	21.35	62.43	1,970.0	234.7	454.7	511.7	0.00	0.00	Mahog Bench
2,100.0	21.35	62.43	2,009.0	241.7	468.2	526.9	0.00	0.00	
2,122.5	21.35	62.43	2,030.0	245.5	475.5	535.1	0.00	0.00	Base B
2,200.0	21.35	62.43	2,102.2	258.6	500.5	563.3	0.00	0.00	
2,300.0	21.35	62.43	2,195.3	275.4	532.8	599.7	0.00	0.00	
2,400.0	21.35	62.43	2,288.4	292.3	565.0	636.1	0.00	0.00	
2,500.0	21.35	62.43	2,381.6	309.1	597.3	672.5	0.00	0.00	
2,600.0	21.35	62.43	2,474.7	326.0	629.6	708.9	0.00	0.00	
2,700.0	21.35	62.43	2,567.9	342.8	661.8	745.4	0.00	0.00	
2,800.0	21.35	62.43	2,661.0	359.7	694.1	781.8	0.00	0.00	
2,900.0	21.35	62.43	2,754.1	376.5	726.4	818.2	0.00	0.00	
3,000.0	21.35	62.43	2,847.3	393.4	758.6	854.6	0.00	0.00	
3,100.0	21.35	62.43	2,940.4	410.2	790.9	891.0	0.00	0.00	
3,200.0	21.35	62.43	3,033.6	427.1	823.2	927.4	0.00	0.00	
3,300.0	21.35	62.43	3,126.7	443.9	855.4	963.8	0.00	0.00	
3,400.0	21.35	62.43	3,219.8	460.8	887.7	1,000.2	0.00	0.00	
3,500.0	21.35	62.43	3,313.0	477.6	920.0	1,036.6	0.00	0.00	
3,600.0	21.35	62.43	3,406.1	494.5	952.2	1,073.0	0.00	0.00	
3,700.0	21.35	62.43	3,499.3	511.3	984.5	1,109.4	0.00	0.00	
3,800.0	21.35	62.43	3,592.4	528.2	1,016.8	1,145.8	0.00	0.00	
3,900.0	21.35	62.43	3,685.5	545.0	1,049.1	1,182.2	0.00	0.00	
4,000.0	21.35	62.43	3,778.7	561.9	1,081.3	1,218.6	0.00	0.00	
4,100.0	21.35	62.43	3,871.8	578.7	1,113.6	1,255.0	0.00	0.00	
4,200.0	21.35	62.43	3,964.9	595.6	1,145.9	1,291.4	0.00	0.00	
4,300.0	21.35	62.43	4,058.1	612.4	1,178.1	1,327.8	0.00	0.00	
4,400.0	21.35	62.43	4,151.2	629.3	1,210.4	1,364.2	0.00	0.00	
4,500.0	21.35	62.43	4,244.4	646.1	1,242.7	1,400.6	0.00	0.00	
4,600.0	21.35	62.43	4,337.5	663.0	1,274.9	1,437.0	0.00	0.00	
4,700.0	21.35	62.43	4,430.6	679.8	1,307.2	1,473.4	0.00	0.00	

Cathedral Energy Services

Planning Report

Database:	EDM 5000.1 US Multi Users DB	Local Co-ordinate Reference:	Well SGU 8501C-25
Company:	EnCana Oil & Gas (USA) Inc	TVD Reference:	KBE @ 8320.0ft (Original Well Elev)
Project:	Story Gulch	MD Reference:	KBE @ 8320.0ft (Original Well Elev)
Site:	F25 496	North Reference:	True
Well:	SGU 8501C-25	Survey Calculation Method:	Minimum Curvature
Wellbore:	DD		
Design:	Plan #1		

Planned Survey

Measured Depth (ft)	Inclination (°)	Azimuth (°)	Vertical Depth (ft)	+N/-S (ft)	+E/-W (ft)	Vertical Section (ft)	Dogleg Rate (°/100ft)	Build Rate (°/100ft)	Comments / Formations
4,800.0	21.35	62.43	4,523.8	696.7	1,339.5	1,509.8	0.00	0.00	
4,900.0	21.35	62.43	4,616.9	713.5	1,371.7	1,546.2	0.00	0.00	
5,000.0	21.35	62.43	4,710.1	730.4	1,404.0	1,582.6	0.00	0.00	
5,100.0	21.35	62.43	4,803.2	747.2	1,436.3	1,619.0	0.00	0.00	
5,200.0	21.35	62.43	4,896.3	764.1	1,468.5	1,655.4	0.00	0.00	
5,300.0	21.35	62.43	4,989.5	780.9	1,500.8	1,691.8	0.00	0.00	
5,400.0	21.35	62.43	5,082.6	797.8	1,533.1	1,728.2	0.00	0.00	
5,500.0	21.35	62.43	5,175.8	814.6	1,565.3	1,764.6	0.00	0.00	
5,600.0	21.35	62.43	5,268.9	831.5	1,597.6	1,801.0	0.00	0.00	
5,700.0	21.35	62.43	5,362.0	848.3	1,629.9	1,837.4	0.00	0.00	
5,800.0	21.35	62.43	5,455.2	865.2	1,662.1	1,873.8	0.00	0.00	
5,900.0	21.35	62.43	5,548.3	882.0	1,694.4	1,910.2	0.00	0.00	
5,923.3	21.35	62.43	5,570.0	886.0	1,701.9	1,918.7	0.00	0.00	Was G
6,000.0	21.35	62.43	5,641.4	898.9	1,726.7	1,946.6	0.00	0.00	
6,100.0	21.35	62.43	5,734.6	915.7	1,758.9	1,983.0	0.00	0.00	
6,200.0	21.35	62.43	5,827.7	932.6	1,791.2	2,019.4	0.00	0.00	
6,300.0	21.35	62.43	5,920.9	949.4	1,823.5	2,055.9	0.00	0.00	
6,400.0	21.35	62.43	6,014.0	966.3	1,855.8	2,092.3	0.00	0.00	
6,500.0	21.35	62.43	6,107.1	983.1	1,888.0	2,128.7	0.00	0.00	
6,600.0	21.35	62.43	6,200.3	1,000.0	1,920.3	2,165.1	0.00	0.00	
6,700.0	21.35	62.43	6,293.4	1,016.8	1,952.6	2,201.5	0.00	0.00	
6,800.0	21.35	62.43	6,386.6	1,033.7	1,984.8	2,237.9	0.00	0.00	
6,900.0	21.35	62.43	6,479.7	1,050.5	2,017.1	2,274.3	0.00	0.00	
7,000.0	21.35	62.43	6,572.8	1,067.4	2,049.4	2,310.7	0.00	0.00	
7,100.0	21.35	62.43	6,666.0	1,084.2	2,081.6	2,347.1	0.00	0.00	
7,200.0	21.35	62.43	6,759.1	1,101.1	2,113.9	2,383.5	0.00	0.00	
7,300.0	21.35	62.43	6,852.3	1,117.9	2,146.2	2,419.9	0.00	0.00	
7,400.0	21.35	62.43	6,945.4	1,134.8	2,178.4	2,456.3	0.00	0.00	
7,500.0	21.35	62.43	7,038.5	1,151.6	2,210.7	2,492.7	0.00	0.00	
7,600.0	21.35	62.43	7,131.7	1,168.5	2,243.0	2,529.1	0.00	0.00	
7,700.0	21.35	62.43	7,224.8	1,185.3	2,275.2	2,565.5	0.00	0.00	
7,800.0	21.35	62.43	7,317.9	1,202.2	2,307.5	2,601.9	0.00	0.00	
7,900.0	21.35	62.43	7,411.1	1,219.0	2,339.8	2,638.3	0.00	0.00	
8,000.0	21.35	62.43	7,504.2	1,235.9	2,372.0	2,674.7	0.00	0.00	
8,100.0	21.35	62.43	7,597.4	1,252.7	2,404.3	2,711.1	0.00	0.00	
8,200.0	21.35	62.43	7,690.5	1,269.6	2,436.6	2,747.5	0.00	0.00	
8,300.0	21.35	62.43	7,783.6	1,286.4	2,468.8	2,783.9	0.00	0.00	
8,400.0	21.35	62.43	7,876.8	1,303.3	2,501.1	2,820.3	0.00	0.00	
8,500.0	21.35	62.43	7,969.9	1,320.1	2,533.4	2,856.7	0.00	0.00	
8,548.1	21.35	62.43	8,014.7	1,328.2	2,548.9	2,874.2	0.00	0.00	Start Drop -3.00
8,600.0	19.79	62.43	8,063.3	1,336.7	2,565.1	2,892.5	3.00	-3.00	
8,700.0	16.79	62.43	8,158.2	1,351.2	2,592.9	2,923.8	3.00	-3.00	
8,800.0	13.79	62.43	8,254.7	1,363.4	2,616.3	2,950.2	3.00	-3.00	
8,900.0	10.79	62.43	8,352.4	1,373.3	2,635.1	2,971.5	3.00	-3.00	
9,000.0	7.79	62.43	8,451.1	1,380.8	2,649.4	2,987.6	3.00	-3.00	
9,100.0	4.79	62.43	8,550.4	1,385.8	2,659.2	2,998.6	3.00	-3.00	
9,200.0	1.79	62.43	8,650.3	1,388.5	2,664.2	3,004.3	3.00	-3.00	
9,219.7	1.20	62.43	8,670.0	1,388.7	2,664.7	3,004.9	3.00	-3.00	WF
9,259.7	0.00	0.00	8,710.0	1,388.9	2,665.1	3,005.3	3.00	-3.00	EOD; Inc=0° - TOG - F25 496 SGU 8501C-25 T
9,300.0	0.00	0.00	8,750.3	1,388.9	2,665.1	3,005.3	0.00	0.00	
9,400.0	0.00	0.00	8,850.3	1,388.9	2,665.1	3,005.3	0.00	0.00	
9,500.0	0.00	0.00	8,950.3	1,388.9	2,665.1	3,005.3	0.00	0.00	

Cathedral Energy Services

Planning Report

Database:	EDM 5000.1 US Multi Users DB	Local Co-ordinate Reference:	Well SGU 8501C-25
Company:	EnCana Oil & Gas (USA) Inc	TVD Reference:	KBE @ 8320.0ft (Original Well Elev)
Project:	Story Gulch	MD Reference:	KBE @ 8320.0ft (Original Well Elev)
Site:	F25 496	North Reference:	True
Well:	SGU 8501C-25	Survey Calculation Method:	Minimum Curvature
Wellbore:	DD		
Design:	Plan #1		

Planned Survey

Measured Depth (ft)	Inclination (°)	Azimuth (°)	Vertical Depth (ft)	+N/-S (ft)	+E/-W (ft)	Vertical Section (ft)	Dogleg Rate (°/100ft)	Build Rate (°/100ft)	Comments / Formations
9,600.0	0.00	0.00	9,050.3	1,388.9	2,665.1	3,005.3	0.00	0.00	
9,700.0	0.00	0.00	9,150.3	1,388.9	2,665.1	3,005.3	0.00	0.00	
9,800.0	0.00	0.00	9,250.3	1,388.9	2,665.1	3,005.3	0.00	0.00	
9,900.0	0.00	0.00	9,350.3	1,388.9	2,665.1	3,005.3	0.00	0.00	
10,000.0	0.00	0.00	9,450.3	1,388.9	2,665.1	3,005.3	0.00	0.00	
10,100.0	0.00	0.00	9,550.3	1,388.9	2,665.1	3,005.3	0.00	0.00	
10,200.0	0.00	0.00	9,650.3	1,388.9	2,665.1	3,005.3	0.00	0.00	
10,300.0	0.00	0.00	9,750.3	1,388.9	2,665.1	3,005.3	0.00	0.00	
10,400.0	0.00	0.00	9,850.3	1,388.9	2,665.1	3,005.3	0.00	0.00	
10,500.0	0.00	0.00	9,950.3	1,388.9	2,665.1	3,005.3	0.00	0.00	
10,600.0	0.00	0.00	10,050.3	1,388.9	2,665.1	3,005.3	0.00	0.00	
10,700.0	0.00	0.00	10,150.3	1,388.9	2,665.1	3,005.3	0.00	0.00	
10,800.0	0.00	0.00	10,250.3	1,388.9	2,665.1	3,005.3	0.00	0.00	
10,900.0	0.00	0.00	10,350.3	1,388.9	2,665.1	3,005.3	0.00	0.00	
11,000.0	0.00	0.00	10,450.3	1,388.9	2,665.1	3,005.3	0.00	0.00	
11,100.0	0.00	0.00	10,550.3	1,388.9	2,665.1	3,005.3	0.00	0.00	
11,200.0	0.00	0.00	10,650.3	1,388.9	2,665.1	3,005.3	0.00	0.00	
11,300.0	0.00	0.00	10,750.3	1,388.9	2,665.1	3,005.3	0.00	0.00	
11,400.0	0.00	0.00	10,850.3	1,388.9	2,665.1	3,005.3	0.00	0.00	
11,500.0	0.00	0.00	10,950.3	1,388.9	2,665.1	3,005.3	0.00	0.00	
11,600.0	0.00	0.00	11,050.3	1,388.9	2,665.1	3,005.3	0.00	0.00	
11,700.0	0.00	0.00	11,150.3	1,388.9	2,665.1	3,005.3	0.00	0.00	
11,800.0	0.00	0.00	11,250.3	1,388.9	2,665.1	3,005.3	0.00	0.00	
11,900.0	0.00	0.00	11,350.3	1,388.9	2,665.1	3,005.3	0.00	0.00	
12,000.0	0.00	0.00	11,450.3	1,388.9	2,665.1	3,005.3	0.00	0.00	
12,100.0	0.00	0.00	11,550.3	1,388.9	2,665.1	3,005.3	0.00	0.00	
12,200.0	0.00	0.00	11,650.3	1,388.9	2,665.1	3,005.3	0.00	0.00	
12,300.0	0.00	0.00	11,750.3	1,388.9	2,665.1	3,005.3	0.00	0.00	
12,400.0	0.00	0.00	11,850.3	1,388.9	2,665.1	3,005.3	0.00	0.00	
12,500.0	0.00	0.00	11,950.3	1,388.9	2,665.1	3,005.3	0.00	0.00	
12,600.0	0.00	0.00	12,050.3	1,388.9	2,665.1	3,005.3	0.00	0.00	
12,700.0	0.00	0.00	12,150.3	1,388.9	2,665.1	3,005.3	0.00	0.00	
12,800.0	0.00	0.00	12,250.3	1,388.9	2,665.1	3,005.3	0.00	0.00	
12,900.0	0.00	0.00	12,350.3	1,388.9	2,665.1	3,005.3	0.00	0.00	
12,919.7	0.00	0.00	12,370.0	1,388.9	2,665.1	3,005.3	0.00	0.00	Rollins - F25 496 SGU 8501C-25 BHL
13,000.0	0.00	0.00	12,450.3	1,388.9	2,665.1	3,005.3	0.00	0.00	
13,100.0	0.00	0.00	12,550.3	1,388.9	2,665.1	3,005.3	0.00	0.00	
13,200.0	0.00	0.00	12,650.3	1,388.9	2,665.1	3,005.3	0.00	0.00	
13,249.7	0.00	0.00	12,700.0	1,388.9	2,665.1	3,005.3	0.00	0.00	Cozzette
13,300.0	0.00	0.00	12,750.3	1,388.9	2,665.1	3,005.3	0.00	0.00	
13,400.0	0.00	0.00	12,850.3	1,388.9	2,665.1	3,005.3	0.00	0.00	
13,439.7	0.00	0.00	12,890.0	1,388.9	2,665.1	3,005.3	0.00	0.00	Corcoran
13,500.0	0.00	0.00	12,950.3	1,388.9	2,665.1	3,005.3	0.00	0.00	
13,600.0	0.00	0.00	13,050.3	1,388.9	2,665.1	3,005.3	0.00	0.00	
13,700.0	0.00	0.00	13,150.3	1,388.9	2,665.1	3,005.3	0.00	0.00	
13,719.7	0.00	0.00	13,170.0	1,388.9	2,665.1	3,005.3	0.00	0.00	Sego
13,800.0	0.00	0.00	13,250.3	1,388.9	2,665.1	3,005.3	0.00	0.00	
13,900.0	0.00	0.00	13,350.3	1,388.9	2,665.1	3,005.3	0.00	0.00	
13,919.7	0.00	0.00	13,370.0	1,388.9	2,665.1	3,005.3	0.00	0.00	Lower Sego
14,000.0	0.00	0.00	13,450.3	1,388.9	2,665.1	3,005.3	0.00	0.00	
14,100.0	0.00	0.00	13,550.3	1,388.9	2,665.1	3,005.3	0.00	0.00	
14,169.7	0.00	0.00	13,620.0	1,388.9	2,665.1	3,005.3	0.00	0.00	TD @ 14169.7'

Cathedral Energy Services

Planning Report

Database:	EDM 5000.1 US Multi Users DB	Local Co-ordinate Reference:	Well SGU 8501C-25
Company:	EnCana Oil & Gas (USA) Inc	TVD Reference:	KBE @ 8320.0ft (Original Well Elev)
Project:	Story Gulch	MD Reference:	KBE @ 8320.0ft (Original Well Elev)
Site:	F25 496	North Reference:	True
Well:	SGU 8501C-25	Survey Calculation Method:	Minimum Curvature
Wellbore:	DD		
Design:	Plan #1		

Planned Survey

Measured Depth (ft)	Inclination (°)	Azimuth (°)	Vertical Depth (ft)	+N/-S (ft)	+E/-W (ft)	Vertical Section (ft)	Dogleg Rate (°/100ft)	Build Rate (°/100ft)	Comments / Formations
14,200.0	0.00	0.00	13,650.3	1,388.9	2,665.1	3,005.3	0.00	0.00	
14,300.0	0.00	0.00	13,750.3	1,388.9	2,665.1	3,005.3	0.00	0.00	
14,400.0	0.00	0.00	13,850.3	1,388.9	2,665.1	3,005.3	0.00	0.00	
14,419.7	0.00	0.00	13,870.0	1,388.9	2,665.1	3,005.3	0.00	0.00	Permit TD @ 14419.7'

Targets

Target Name - hit/miss target - Shape	Dip Angle (°)	Dip Dir. (°)	TVD (ft)	+N/-S (ft)	+E/-W (ft)	Northing (ft)	Easting (ft)	Latitude	Longitude
F25 496 SGU 8501C-25 - plan hits target center - Rectangle (sides W30.0 H50.0 D0.0)	0.00	0.00	12,370.0	1,388.9	2,665.1	1,682,486.41	2,265,491.46	39° 40' 41.70 N	108° 6' 35.72 W
F25 496 SGU 8501C-25 - plan hits target center - Point	0.00	0.00	8,710.0	1,388.9	2,665.1	1,682,486.41	2,265,491.46	39° 40' 41.70 N	108° 6' 35.72 W

Formations

Measured Depth (ft)	Vertical Depth (ft)	Name	Lithology	Dip (°)	Dip Direction (°)
1,736.0	1,670.0	Para Creek		0.00	
2,058.1	1,970.0	Mahog Bench		0.00	
2,122.5	2,030.0	Base B		0.00	
5,923.3	5,570.0	Was G		0.00	
9,219.7	8,670.0	WF		0.00	
9,259.7	8,710.0	TOG		0.00	
12,919.7	12,370.0	Rollins		0.00	
13,249.7	12,700.0	Cozzette		0.00	
13,439.7	12,890.0	Corcoran		0.00	
13,719.7	13,170.0	Sego		0.00	
13,919.7	13,370.0	Lower Sego		0.00	

Plan Annotations

Measured Depth (ft)	Vertical Depth (ft)	+N/-S (ft)	+E/-W (ft)	Comment
300.0	300.0	0.0	0.0	KOP @ 300'
1,012.6	996.2	0.9	2.5	EOB; Inc=21.35°
8,548.1	8,014.8	58.5	117.3	Start Drop -3.00
9,259.7	8,710.0	1,328.3	2,548.9	EOD; Inc=0°
14,169.7	13,620.0	1,388.9	2,665.1	TD @ 14169.7'
14,419.7	13,870.0	1,388.9	2,665.1	Permit TD @ 14419.7'