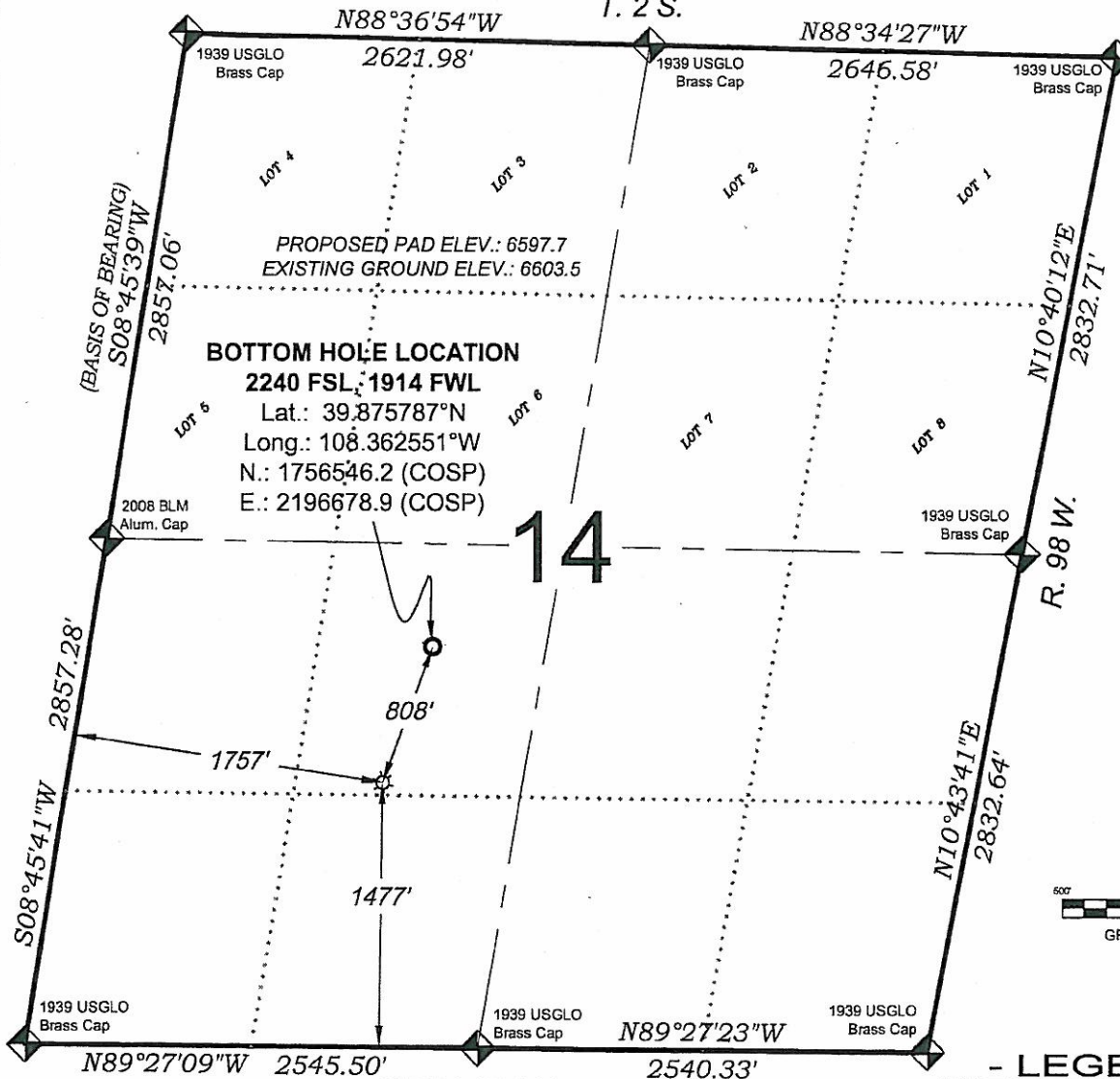
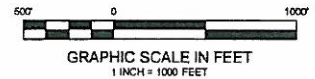


Federal RG 23-14-298

T. 2 S.



1477 FSL
1757 FWL
LATITUDE
39.873678°N
LONGITUDE
108.363449°W
NORTHING
1755786.5
EASTING
2196402.8



- LEGEND -

FIELD LOCATED SECTION
MONUMENTS AS DESCRIBED

FIELD SURVEYED
WELL LOCATION

CALCULATED BOTTOM
HOLE LOCATION

CALCULATED SECTION
CORNER LOCATION

SURVEYORS STATEMENT

I, MICHAEL J. LANGHORNE, A REGISTERED LAND SURVEYOR IN THE STATE OF COLORADO DO HEREBY CERTIFY THAT THE SURVEY SHOWN HEREON WAS PREPARED UNDER MY DIRECT SUPERVISION AND HAS BEEN STAKED ON THE GROUND AS SHOWN ON THE PLAT AND CHECKING THAT THIS MAP IS A TRUE REPRESENTATION THEREOF.

Michael J. Langhorne

MICHAEL J. LANGHORNE, COLORADO REGISTRATION NO. 36572
FOR AND ON BEHALF OF
BOOKCLIFF SURVEY SERVICES, INC.

REFERENCES

- 1) CORRECTIVE DEPENDENT RESURVEY T. 2 S., R. 98 W., 6th P.M (GLO PLAT)
- 2) U.S.G.S. QUAD: Rock School and Square S Ranch, CO

NOTES

- 1) ELEVATIONS BASED ON N.A.V.D. 1988 PUBLISHED COORDINATES.
- 2) LATITUDES AND LONGITUDES ARE BASE ON NAD 83, PUBLISHED COORDINATES
- 3) STATE PLANE COORDINATES ARE BASED ON COLORADO CENTRAL ZONE, U.S. SURVEY FEET.
- 4) ELEVATION MASK SET TO 15"
- 5) GPS OPERATOR J. KIRKPATRICK, OBSERVED A PDOP OF 1.78 FOR SURVEY POINT NUMBER 4000.
- 6) SURFACE AND BOTTOM HOLE LOCATIONS ARE MEASURED 90° FROM SECTION LINES.

WELL LOCATION PLAT Prepared for:

Williams Williams Production, RMT

NE1/4 SW1/4, SECTION 14

T. 2 S., R. 98 W. of the 6th P.M.

Rio BLANCO COUNTY, COLORADO

106 East Third Street
P.O. Box 11650
Phoenix, Arizona 85066
Ph: (602) 625-1830
Fax: (602) 625-2773



BOOKCLIFF
Survey Services, Inc.

SURVEY DATE: 3/26/10
MAP DATE: 3/31/10
SCALE: 1" = 1000'
PLAT: 1 of 1
PROJECT: Williams