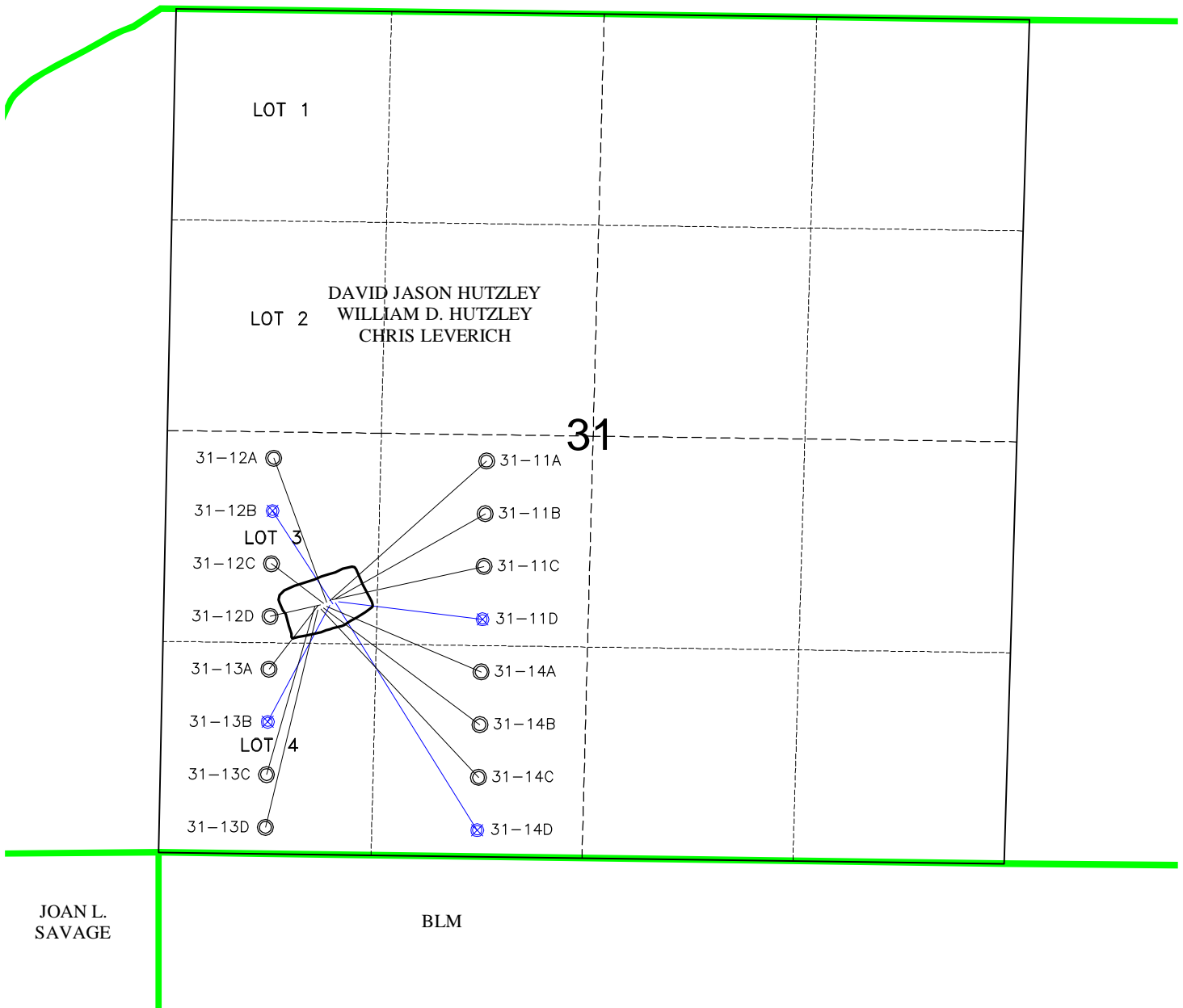


# MULTI-WELL PLAN

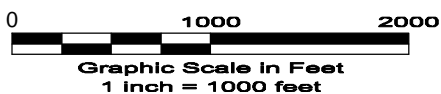
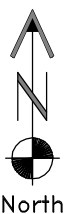


PROPERTY LINE

○ PROPOSED BOTTOM HOLE LOCATION

⊗ EXISTING BOTTOM HOLE

12/15/09



**GEO SURV**

LAND SURVEYING AND MAPPING  
LAFAYETTE - WINTER PARK  
Ph 303 666 0379 Fx 303 665 6320

**LARAMIE ENERGY II LLC**  
**LEVERICH 31-12 PAD**

**GOVT LOT 3 SEC. 31 T6S R93W**  
**6th PM GARFIELD COUNTY COLORADO**