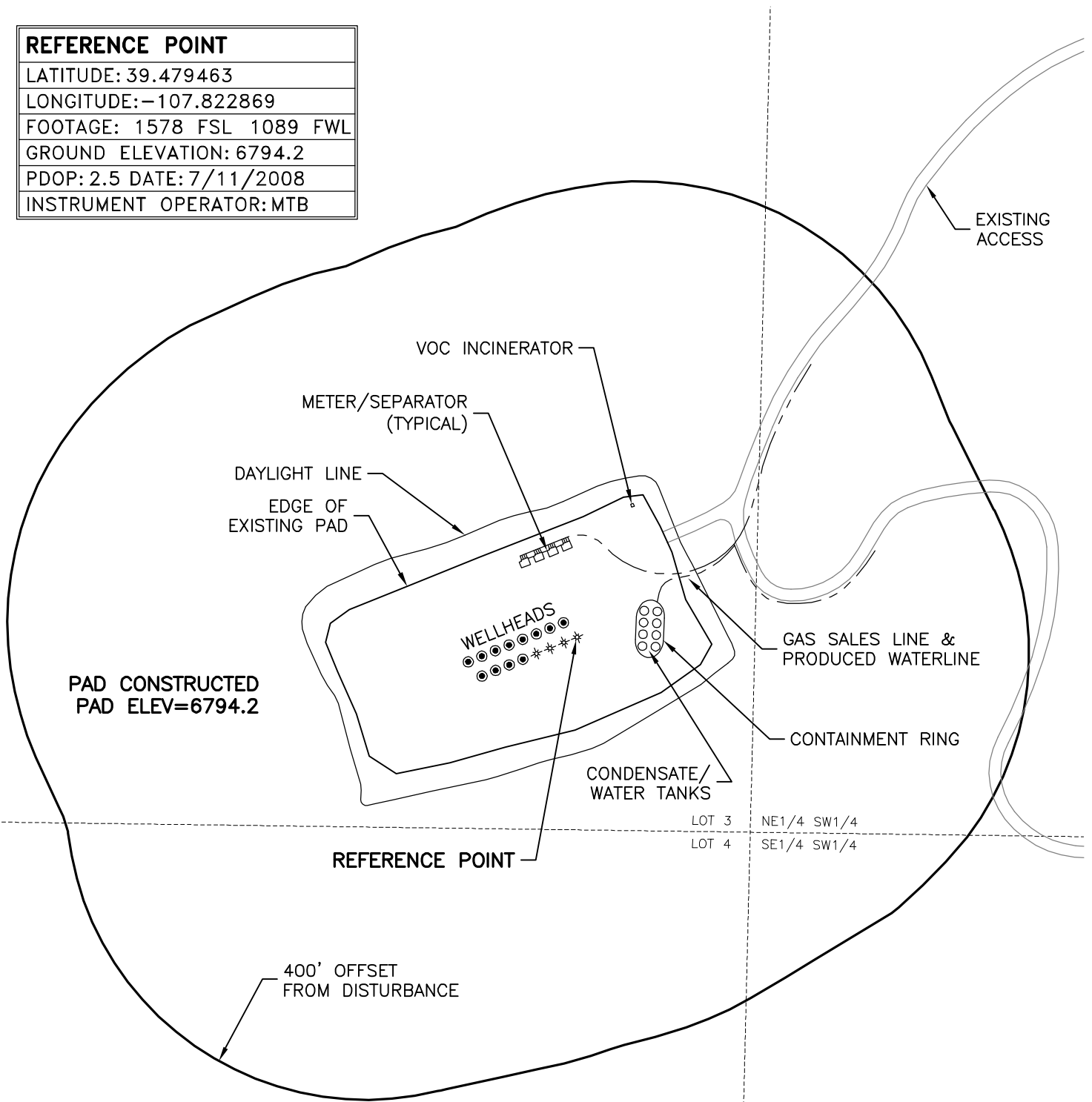


LOCATION DRAWING

REFERENCE POINT

LATITUDE: 39.479463
 LONGITUDE: -107.822869
 FOOTAGE: 1578 FSL 1089 FWL
 GROUND ELEVATION: 6794.2
 PDOP: 2.5 DATE: 7/11/2008
 INSTRUMENT OPERATOR: MTB



DISTURBANCE ACREAGE:
 3.8± DRILLING OPERATIONS
 1.2± INTERIM RECLAIM

12/15/09



North

0 200 400
 Graphic Scale in Feet
 1 inch = 200 feet



LAND SURVEYING AND MAPPING
 LAFAYETTE - WINTER PARK
 Ph 303 666 0379 Fx 303 665 6320

**LARAMIE ENERGY II LLC
 LEVERICH 31-12 PAD**

**GOVT LOT 3 SEC. 31 T6S R93W
 6th PM GARFIELD COUNTY COLORADO**