

T7S, R92W, 6th P.M.

ENCANA OIL & GAS (USA) INC

WELL LOCATION, ENCANA-FEE 2-13C (A10E), LOCATED AS SHOWN IN THE NW 1/4 NW 1/4 OF SECTION 11, T7S, R92W, 6th P.M. GARFIELD COUNTY, COLORADO.

Set Stone WEST - (G.L.O.) 2001 Alum. Cap LS 31143 WEST (G.L.O.) Set Stone
S89°19'20"W - 2646.60' (Meas.) S88°59'39"W - 2640.54' (Meas.)

Sec. 3

Sec. 2

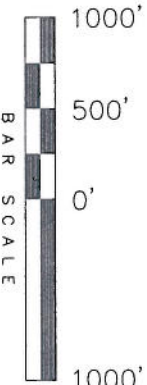
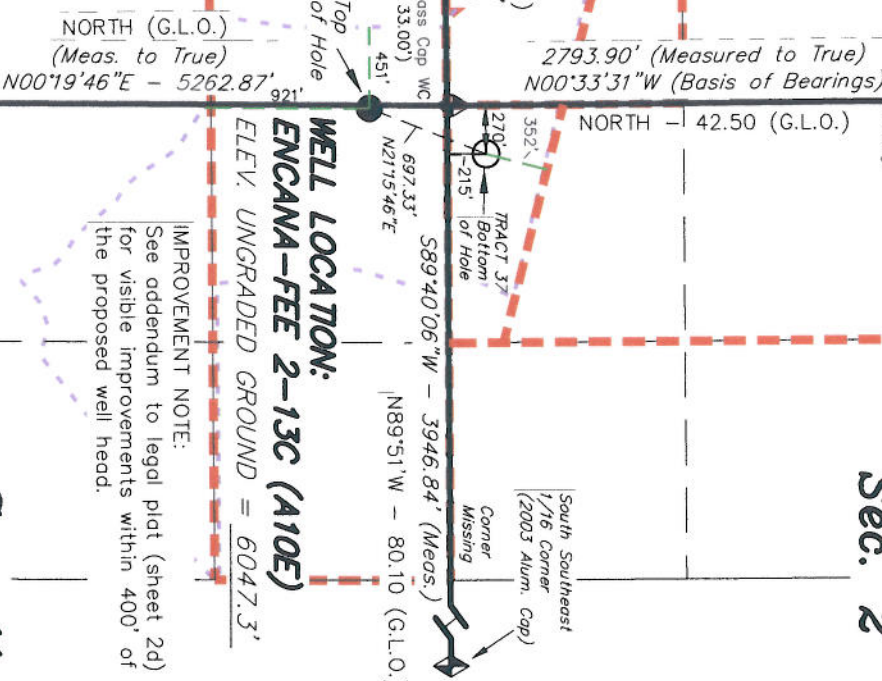
Sec. 10

Sec. 11

SECTION CORNERS LOCATED

= SECTION CORNERS LOCATED
Basis of elevation is the Rifle 2 Triangulation Station. 39°31'53.80" N Lat. & 107°47'07.78" W Long. (NAD 83). Elevation = 5323.1' (NAVD88).

NAD 83 (SURFACE LOCATION)
LATITUDE = 39°28'03.38"
(39.467606)
LONGITUDE = 107°38'34.91"
(107.643031)



- NOTES:
1. Well footages are measured at right angles to the Section Lines.
 2. Bearings are based on Global Positioning Satellite observations.
 3. The top of hole footages are 433' FNL & 18' FWL.
 4. G.P.S. Operator: C.D. Slaughter, (PDOP) = 3.5

THIS IS TO CERTIFY THAT THE ABOVE PLAT WAS PREPARED FROM FIELD NOTES OF THE SURVEY MADE BY ME OR UNDER MY SUPERVISION AND THAT THE SAME ARE TRUE AND CORRECT TO THE BEST OF MY KNOWLEDGE AND BELIEF.

REGISTERED LAND SURVEYOR
REGISTRATION NO. 30125
STATE OF COLORADO
30125

TRI STATE LAND SURVEYING & CONSULTING
180 NORTH VERNAL AVE. - VERNAL, UTAH 84078
(435) 781-2501

DATE SURVEYED: 10-20-06	SURVEYED BY: C.D.S.	SHEET 2a
DATE DRAWN: 11-1-06	DRAWN BY: R.V.C.	
REVISED: 02-01-10 F.T.M.	SCALE: 1" = 1000'	