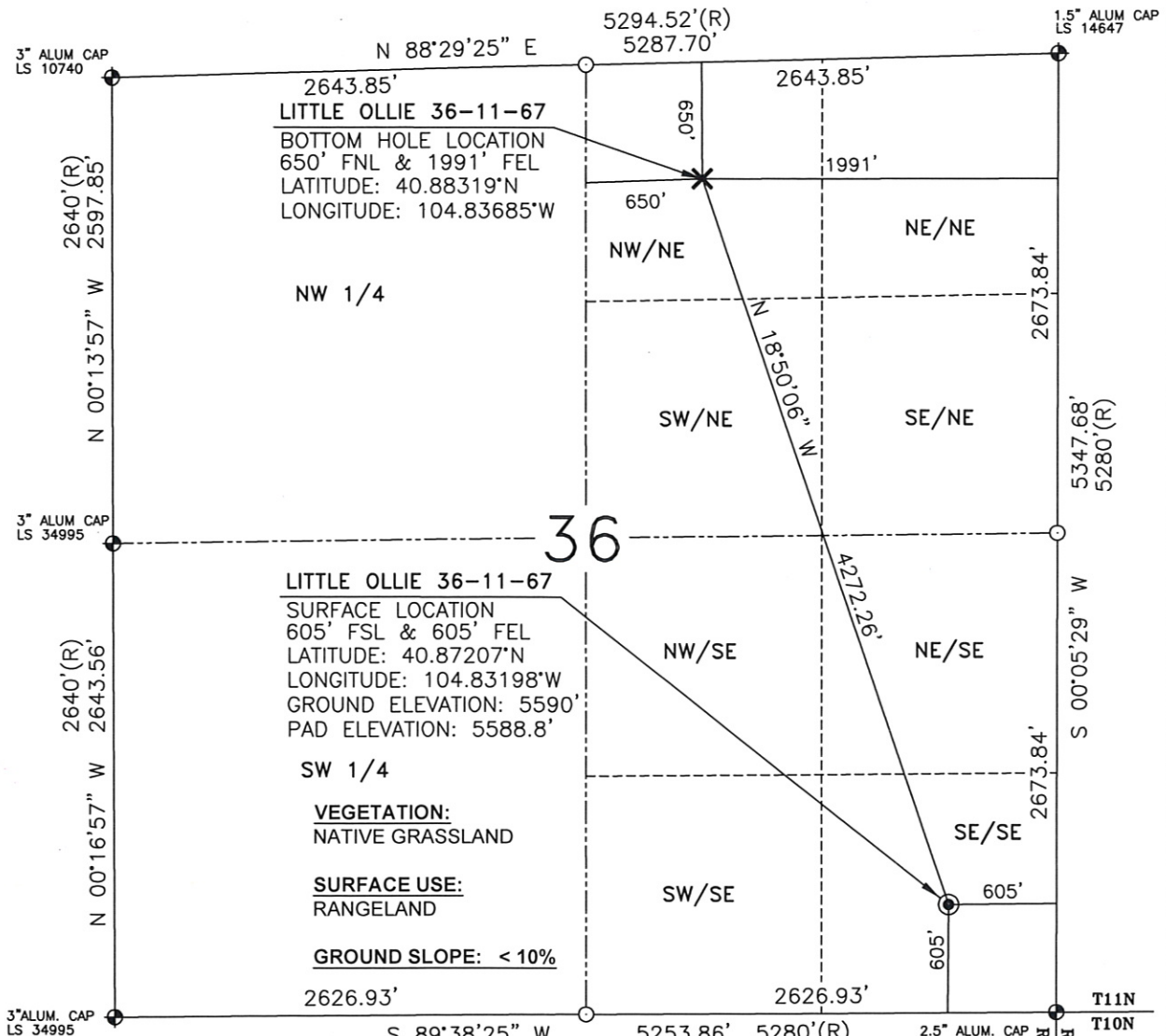


WELL LOCATION MAP

LITTLE OLLIE 36-11-67



LEGEND:

- ⊙ - PROPOSED WELL SURFACE LOCATION
- ⊗ - PROPOSED BOTTOM HOLE LOCATION
- ◆ - FOUND AS NOTED
- - CALCULATED CORNER
- (R) - GLO RECORD

NOTES:

- 1) Horizontal and vertical coordinates based from NGS CORS station "COFC", with an elevation of 5285.90'.
- 2) Basis of bearings are Colorado State Plane north zone. Distances are ground NAD 83, NAVD 88. PAF:1.000251
- 3) All section line dimensions shown hereon are based on field measurements of existing monuments and/or physical evidence found in the field unless otherwise indicated. refer to land survey plats deposited in Weld County
- 4) Physical features shown hereon are for graphical representation only.
- 5) See form 2A for visible improvements within 400' of the wellhead
- 6) Distances to nearest section lines are measured perpendicularly.
- 7) This is not a land survey nor land survey plat.
- 8) Date of survey 4/27/10; Date of Drawing 5/19/10. REV 0

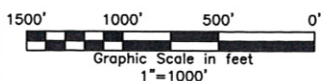
PDOP Reading 2.8 Instrument Operator Daniel King

I, JASON D. LEVANEN, A DULY REGISTERED LAND SURVEYOR IN THE STATE OF COLORADO, DO HEREBY CERTIFY THAT THIS PLAT WAS PREPARED FROM NOTES TAKEN DURING A SURVEY PERFORMED BY ME OR UNDER MY SUPERVISION ON APRIL 27, 2010.



WESTERN LAND SERVICES

Sheridan, WY 82801 (307)673-1817



DP: L:\Slawson\Well Plats\Well_Plats.dwg

Date: 5-19-10

SLAWSON EXPLORATION
COMPANY, INC.
BUSHWACKER 24-11-67

SL: SE1/4SE1/4, S.36, T11N-R67W
BL: NW1/4NE1/4, S.36, T11N-R67W
6TH P.M., WELD COUNTY, COLORADO