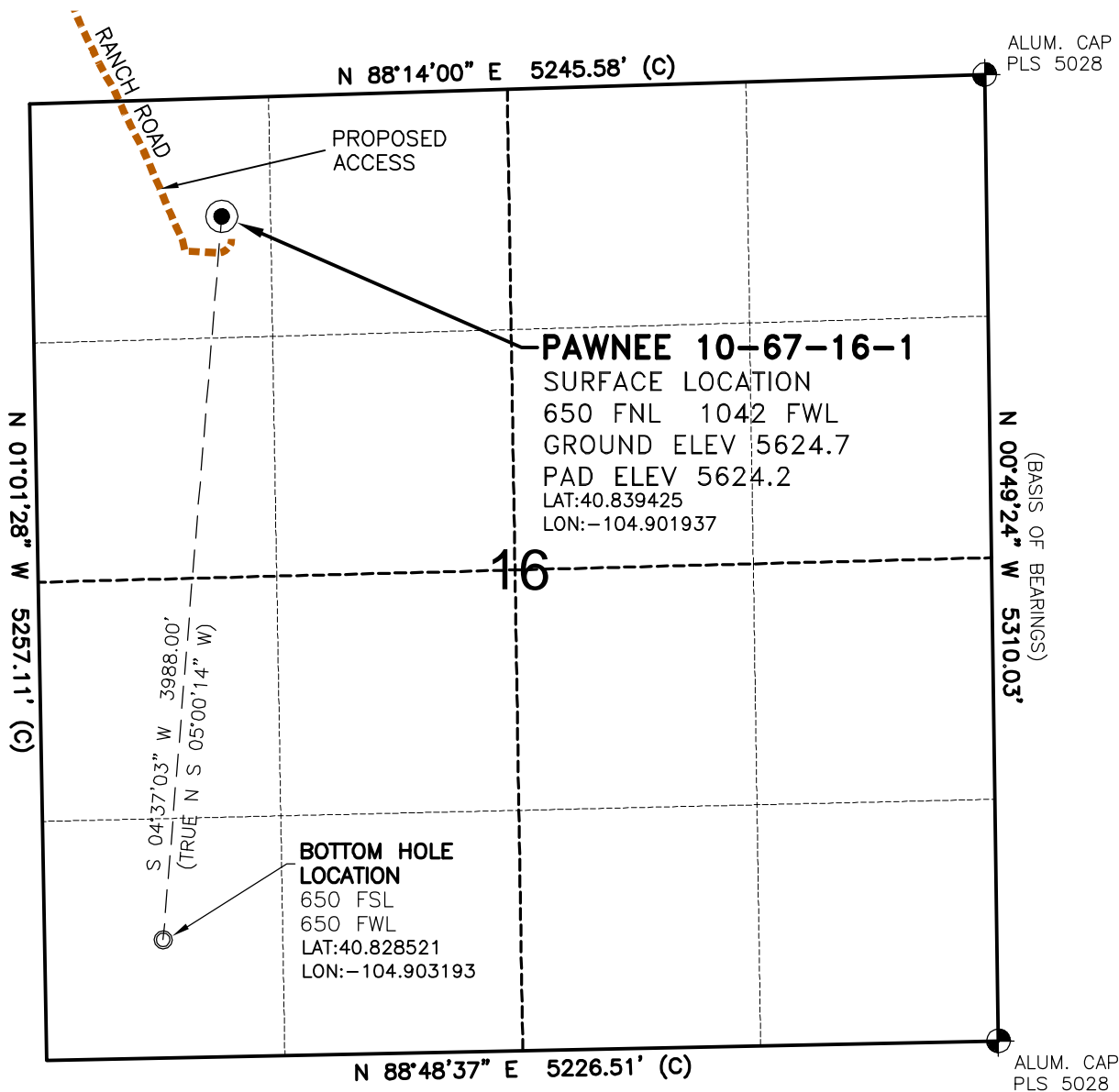


WELL LOCATION MAP

PAWNEE 10-67-16-1 PAD



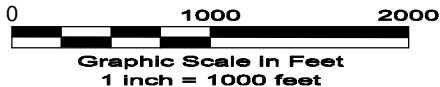
SURVEYOR'S STATEMENT

The undersigned hereby states that the well location shown hereon was staked on the ground based on existing monumentation and/or physical evidence found in the field and is correct to the best of my knowledge, information and belief.

NOTES

- 1.) Horizontal coordinates based on NGS control point "HORA" and vertical datum based on NGS control point "P 390" with an elevation of 5199.21. NAVD 1988.
 - 2.) All directions, distances, and dimensions shown hereon are based on coordinates from the "Colorado coordinate system of 1983 north zone" (article 52 of title 38, C.R.S.).
 - 3.) All section line dimensions shown hereon are based on field measurements of existing monuments and/or physical evidence found in the field unless otherwise indicated. Refer to land survey plats deposited in Weld County.
 - 4.) Physical features shown hereon are for graphical representation only.
 - 5.) See Form 2A for visible improvements within 400' of wellhead.
 - 6.) Distances to nearest section lines are measured perpendicularly.
 - 7.) This is not a land survey nor land survey plat.
 - 8.) Date of Survey 4/2/10; Date of Drawing 4/12/10. REV 0
- PDOP Reading: 1.8 Instrument Operator: DJM

4/12/10



GEO SURV

LAND SURVEYING AND MAPPING
 LAFAYETTE - WINTER PARK
 Ph 303 666 0379 Fx 303 665 6320

RUBICON OIL & GAS LLC
 PAWNEE 10-67-16-1

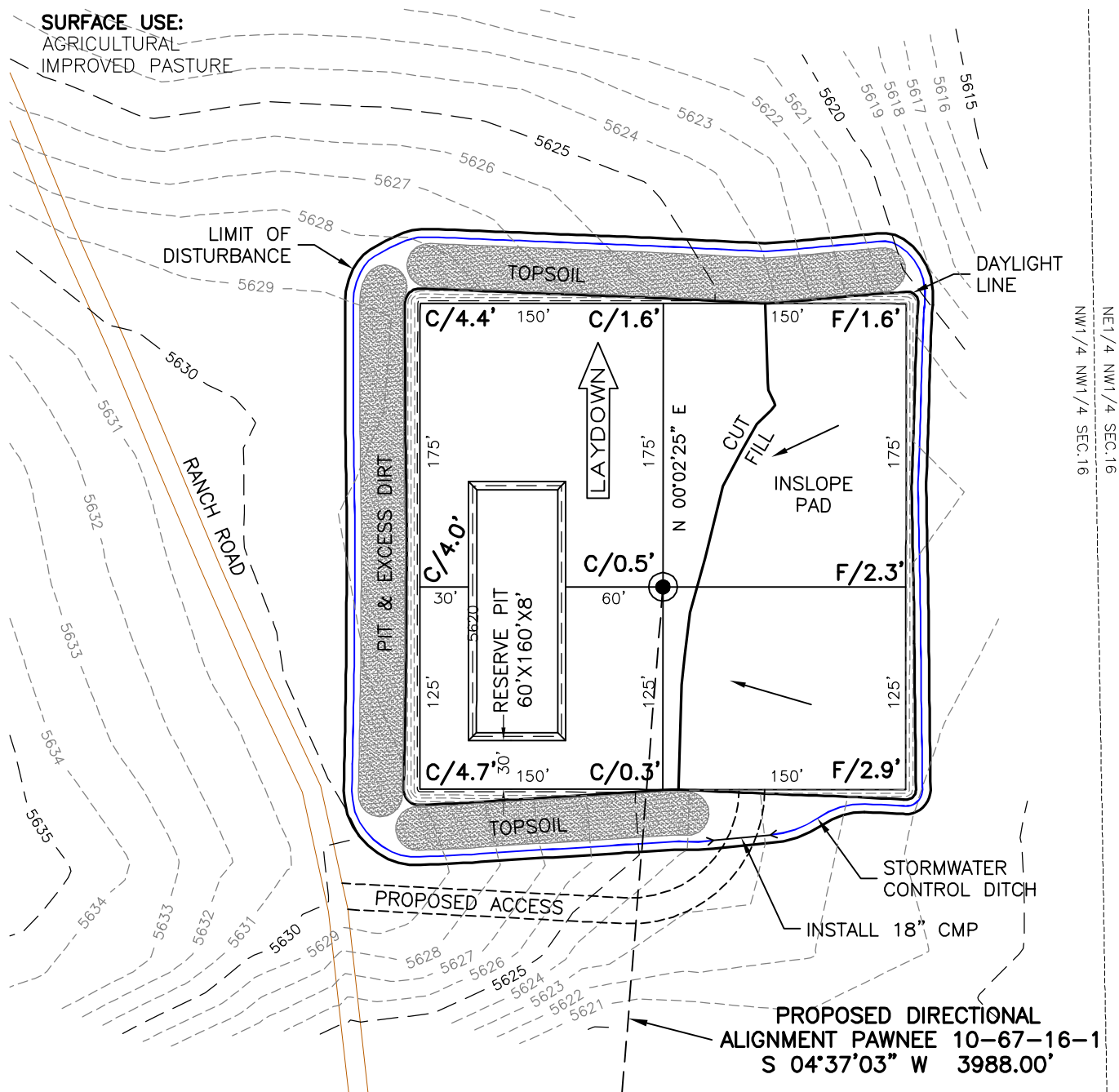
SL NW1/4 NW1/4 SEC. 16 T10N R67W
 BL SW1/4 SW1/4 SEC. 16 T10N R67W
 6th PM WELD COUNTY COLORADO

VEGETATION:
PASTURE—GRASSES

PAD LAYOUT

PAWNEE 10-67-16-1 PAD

SURFACE USE:
AGRICULTURAL
IMPROVED PASTURE

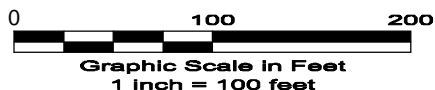


NOTES:

- 1) 10% ALLOWANCE IS MADE FOR SOIL EXPANSION.
- 2) PIT LOCATION & SIZE TO BE DETERMINED AT TIME OF CONSTRUCTION.



North



4/12/10

LAND SURVEYING AND MAPPING
LAFAYETTE - WINTER PARK
Ph 303 666 0379 Fx 303 665 6320

PAD 300'x300' ELEV=5624.2

DISTURBED AREA= 3.1 ACRES

ESTIMATED DIRT QUANTITIES

CUTx10%	FILL	PIT	TOPSOIL	EXCESS
5,430	1,810	2,780	3,590	30

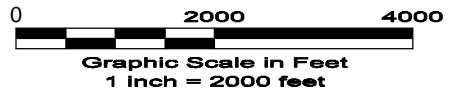
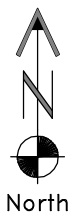
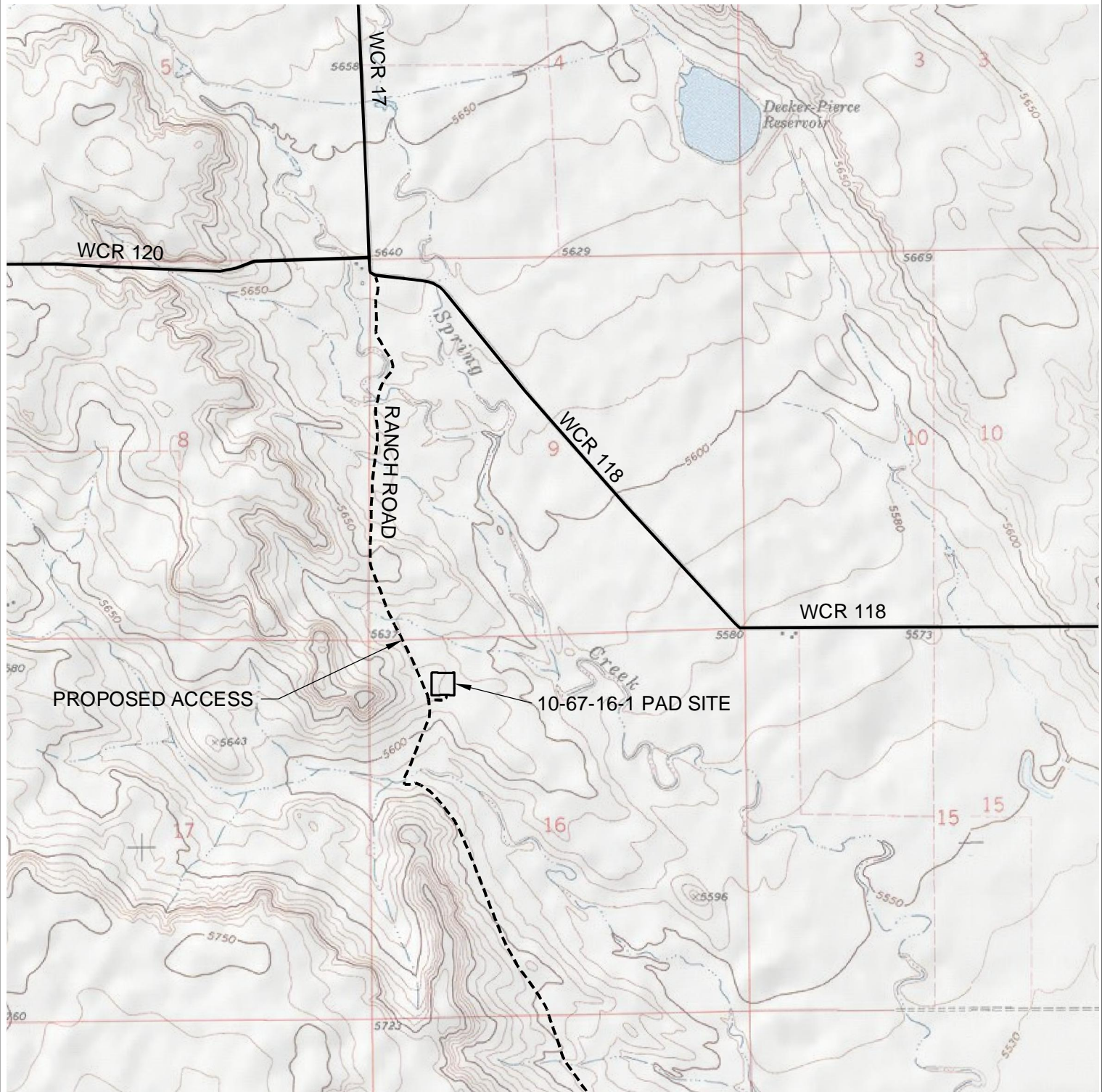
NOTE: VOLUMES IN CUBIC YARDS. TOPSOIL INCLUDED IN VOLUMES AT A DEPTH OF 12". PIT NOT INCLUDED IN TOTAL EXCESS.

RUBICON OIL & GAS LLC
PAWNEE 10-67-16-1

SL NW1/4 NW1/4 SEC. 16 T10N R67W
BL SW1/4 SW1/4 SEC. 16 T10N R67W
6th PM WELD COUNTY COLORADO

ACCESS ROAD MAP

PAWNEE 10-67-16-1 PAD



4/12/10



GEO SURV

LAND SURVEYING AND MAPPING
LAFAYETTE - WINTER PARK
Ph 303 666 0379 Fx 303 665 6320

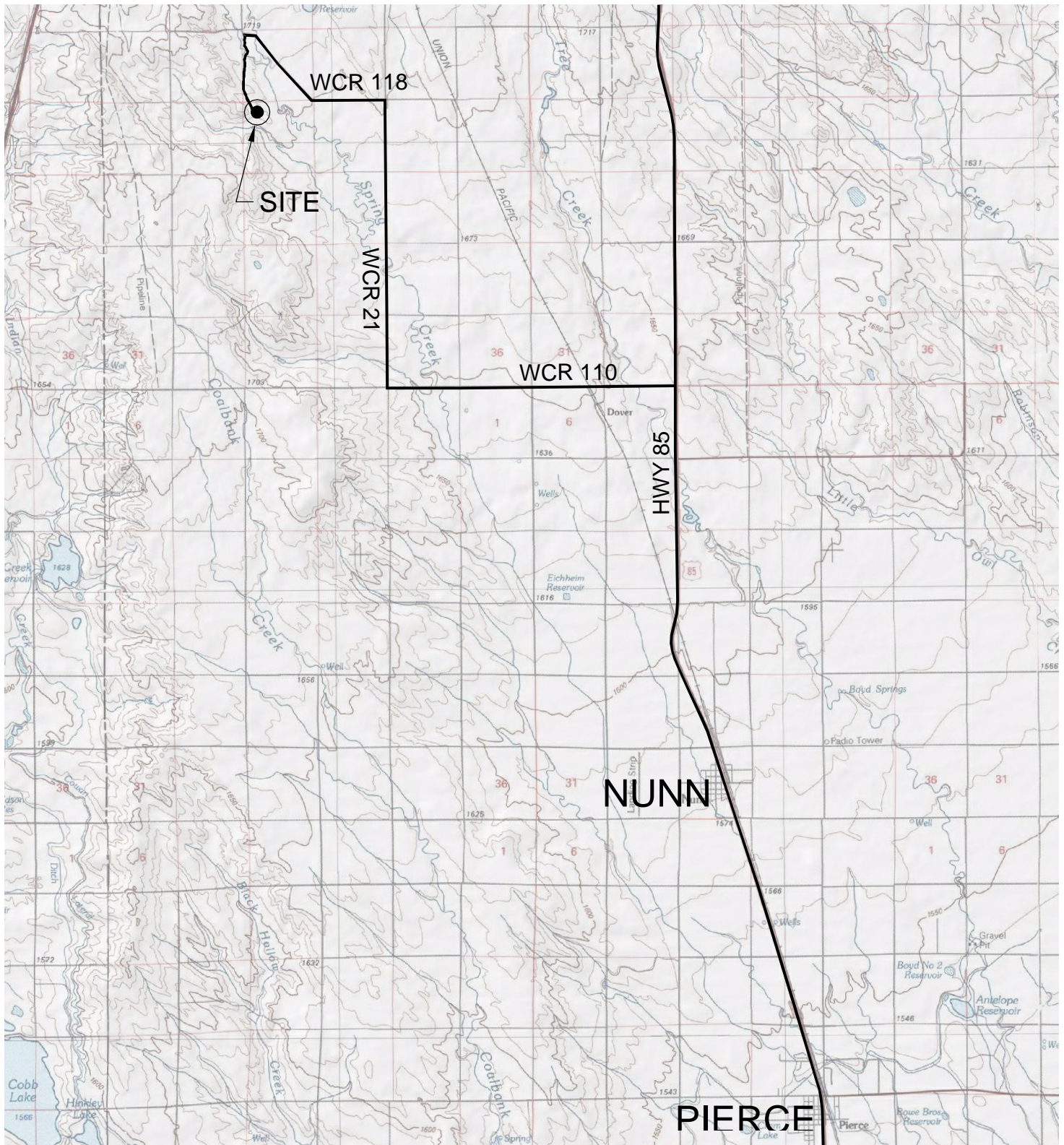
RUBICON OIL & GAS LLC
PAWNEE 10-67-16-1

SL NW1/4 NW1/4 SEC. 16 T10N R67W
BL SW1/4 SW1/4 SEC. 16 T10N R67W
6th PM WELD COUNTY COLORADO

DWG: G:\GEO SURV\2009\09035\Wellplat\2010 Wells\PAWNEE 10-67-16-1\PAWNEE 10-67-16-1 PLAT.dwg USER: Owner DATE: Apr 12, 2010 1:31pm

VICINITY MAP

PAWNEE 10-67-16-1 PAD



1" = 2 MILES
GRID



LAND SURVEYING AND MAPPING
LAFAYETTE - WINTER PARK
 Ph 303 666 0379 Fx 303 665 6320

RUBICON OIL & GAS LLC
PAWNEE 10-67-16-1

SL NW1/4 NW1/4 SEC. 16 T10N R67W
BL SW1/4 SW1/4 SEC. 16 T10N R67W
6th PM WELD COUNTY COLORADO

4/12/10