

RUBICON OIL & GAS LLC

DRIVEWAY PICTURES FOR PAWNEE 10-67-16-1 PAD

**PAD LOCATION NW ¼ NW ¼ SECTION 16 T10N R67W
WELD COUNTY COLORADO**



WCR 118 EAST



WCR 118 WEST



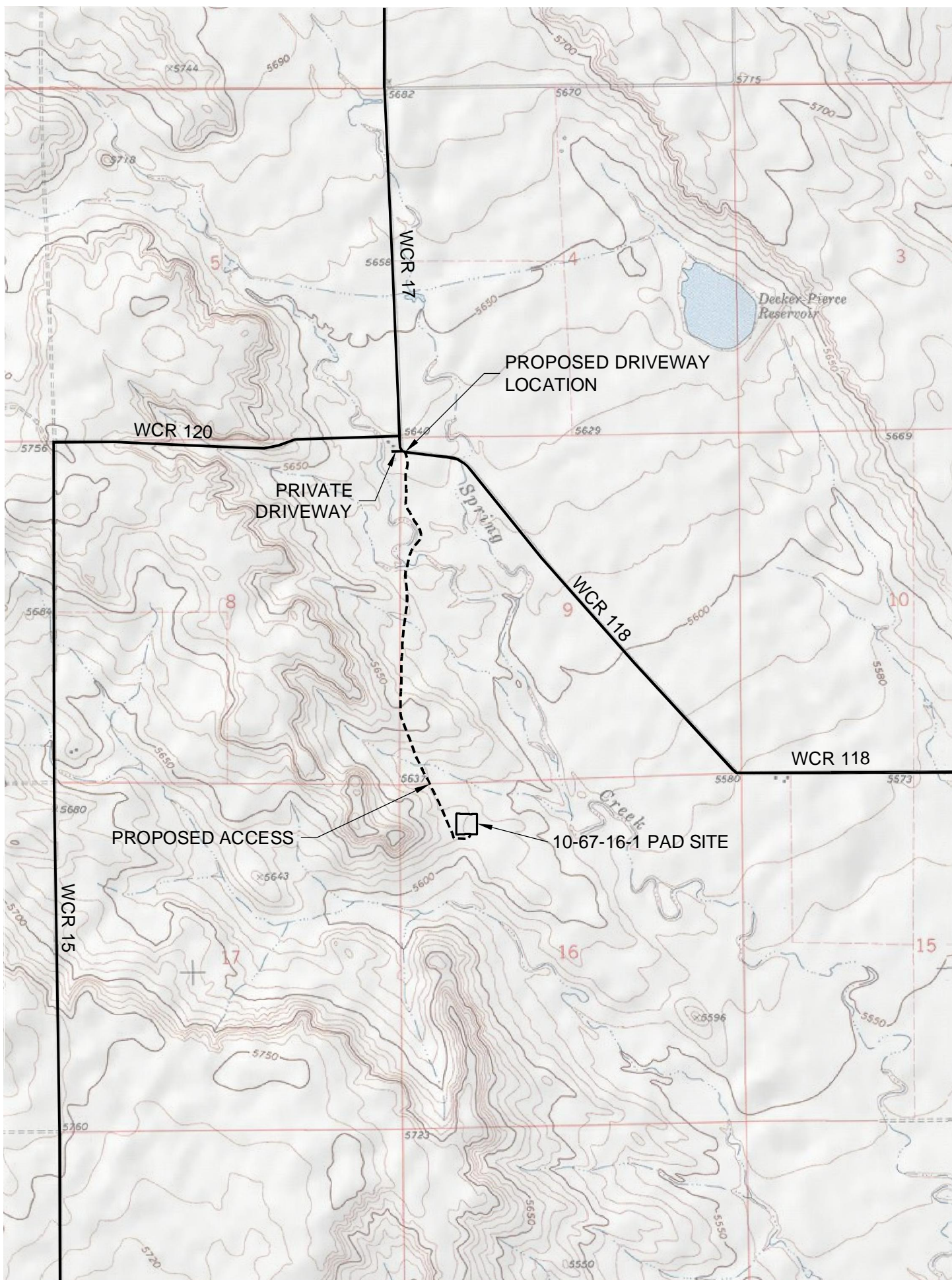
INTO ACCESS

DATE OF PICTURES 3/30/2010



GEOSURV Inc. 520 Stacy CT Suite B Lafayette CO 80026 ph 303 666 0379 fx 303 665 6320

G:\GEOSURV\2009\09035\Wellplats\2010 Wells\Pawnee 10-67-16-1\Driveway\Pawnee 10-67-16-1 Driveway Pics.docx 4/12/2010 1:34:00 PM





North

WCR 120
(GRAVEL SURFACE)

WCR 17
(GRAVEL SURFACE)

POWERPOLE
(TYPICAL)

WOOD RAIL FENCE

OVERHEAD POWERLINE

PRIVATE
DRIVE

60'±

WCR 118
(GRAVEL SURFACE)

CATTLE
GUARD

IMPROVE EXISTING DRIVEWAY

CORRALS

PASTURE

