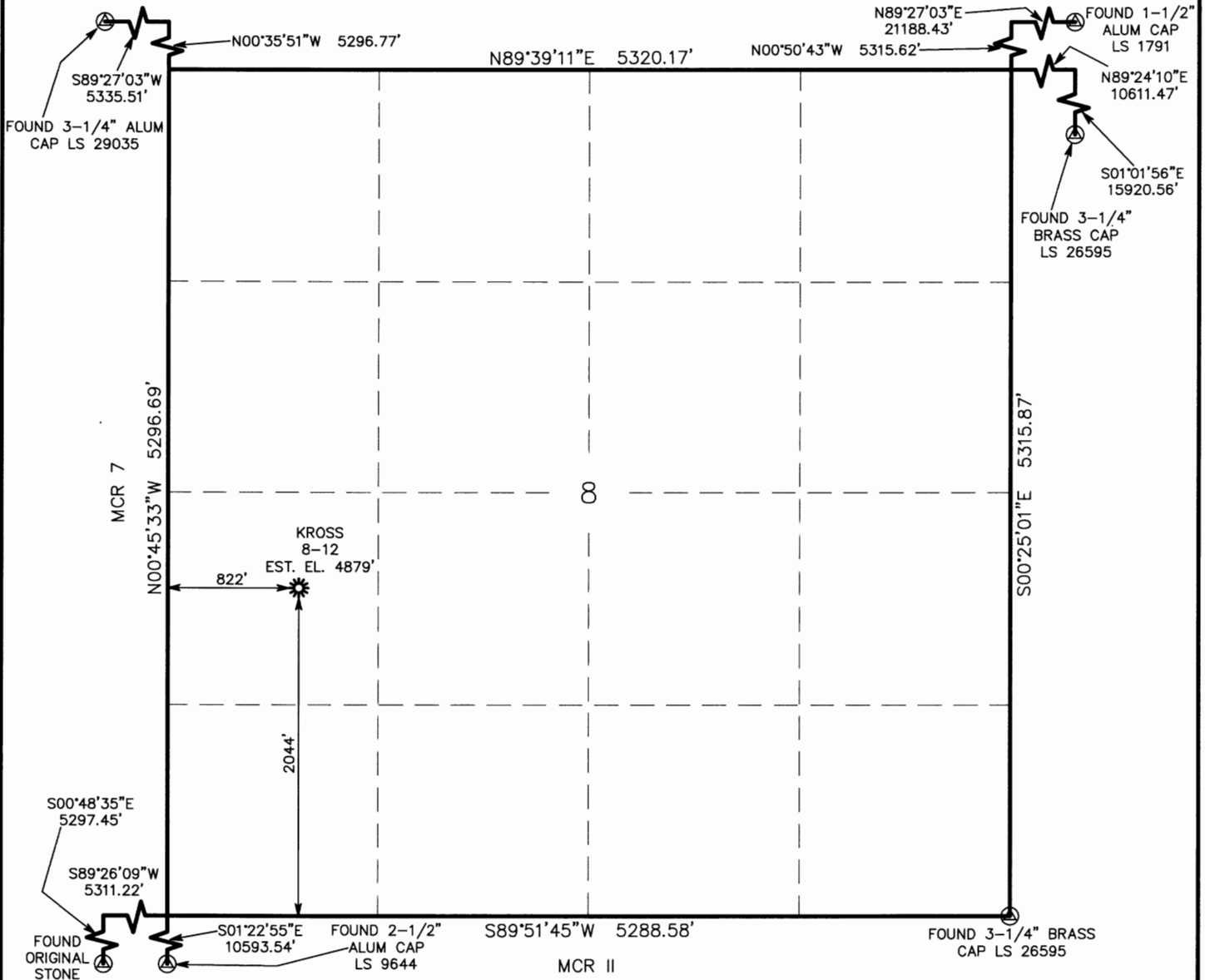


WELL LOCATION CERTIFICATE
THIS MAP DOES NOT REPRESENT A BOUNDARY SURVEY

KROSS 8-12

SECTION 8
TOWNSHIP 6 NORTH
RANGE 59 WEST



IN ACCORDANCE WITH A REQUEST FROM JAMES KARO - ESEJAY PETROLEUM CORP, ATLAS SURVEYING COMPANY, INC. HAS DETERMINED THE LOCATION OF THE KROSS 8-12 TO BE 2044' FSL, 822' FWL, AS MEASURED AT NINETY (90) DEGREES FROM THE SECTION LINES, SECTION 8, TOWNSHIP 6 NORTH, RANGE 59 WEST, 6TH PRINCIPLE MERIDIAN, MORGAN COUNTY, COLORADO.

I HEREBY CERTIFY THAT THIS WELL LOCATION CERTIFICATE WAS PREPARED BY ME, OR UNDER MY DIRECT SUPERVISION, THAT THE FIELD WORK WAS COMPLETED ON 06/15/2010, FOR AND ON BEHALF OF ESEJAY PETROLEUM CORP THAT IT IS NOT A LAND SURVEY PLAT OR AN IMPROVEMENT SURVEY PLAT, AND THAT IT IS NOT TO BE RELIED UPON FOR ESTABLISHMENT OF FENCE, BUILDING, OR OTHER FUTURE IMPROVEMENT LINES.

NOTES:

- 1) BASIS OF BEARINGS FOR THIS MAP ARE BASED UPON GPS OBSERVATIONS MADE ON 04/16/2010 BETWEEN MONUMENTS LOCATED AT THE SOUTHEAST SECTION CORNER AND THE EAST QUARTER CORNER OF SAID SECTION AND WITH ALL BEARINGS SHOWN HEREON RELATIVE THERETO.
- 2) ELEVATIONS ARE BASED UPON THE AVERAGE OF SPOT ELEVATIONS DEPICTED ON THE U.S.G.S. 7.5 MINUTE QUADRANGLE MAP OF THE SECTION SHOWN HEREON.
- 3) THERE ARE NO VISIBLE IMPROVEMENTS WITHIN 400 FEET OF THE LOCATION.
- 4) THERE ARE NO VISIBLE HYDROLOGIC FEATURES WITHIN 1000' OF THE LOCATION.
- 5) THE LOCATION FALLS IN AN OPEN FIELD.

LATITUDE & LONGITUDE (NAD 83 SURFACE HOLE):
LATITUDE: N 40.50081°
LONGITUDE: W 104.01037°
PDOP: 1.96

LEGEND

- ⊙ - FOUND SURVEY MONUMENT PER MONUMENT RECORD EXCEPTIONS NOTED.
- (C) - CALCULATED DIMENSION

NOTICE: According to Colorado law you MUST commence any legal action based upon any defect in this W.L.C. within three years after you first discover such defect. In no event may any action based upon any defect in this W.L.C. be commenced more than ten years from this said date of the certification shown hereon.

COLORADO REGISTERED
MICHAEL FEIGENBAUM
29035
Professional Land Surveyor Registration No. 29035
State of Colorado
Completed 06/21/2010
Michael Feigenbaum
JOB #: EPC-10008B

