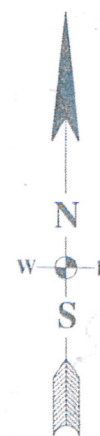
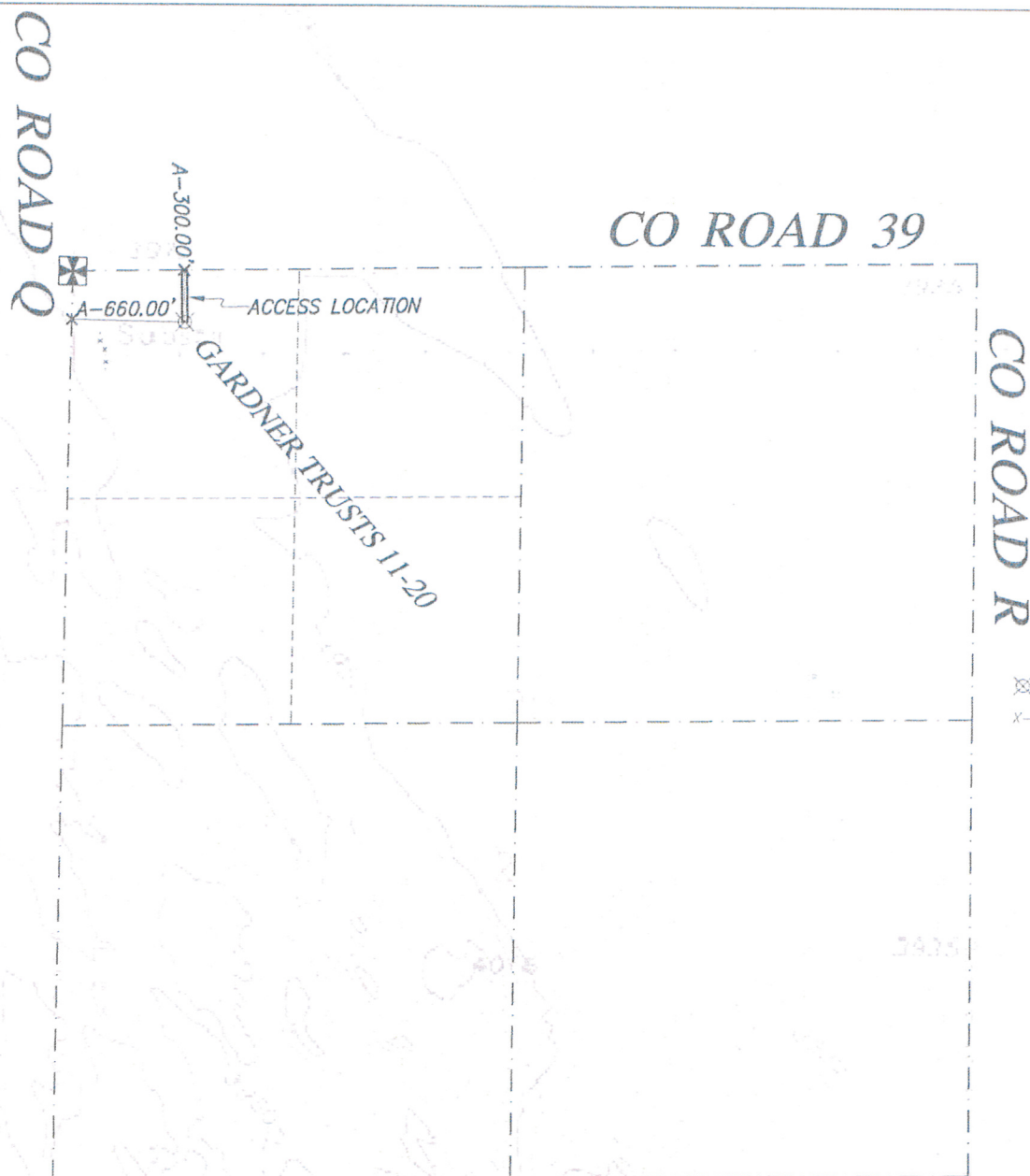


## TOPOGRAPHIC MAP

FOR WELL GARDNER TRUSTS 11-20 LOCATED IN SECTION 20, TOWNSHIP 2  
NORTH, RANGE 46 WEST OF THE 6TH P.M., YUMA COUNTY, COLORADO.



SCALE 1" = 1000'

LEGEND

- ⊗ PROPOSED WELL LOCATION  
X- TEMPORARY POINT



**DICKINSON LAND SURVEYORS, INC.**  
NEBRASKA AND COLORADO CERTIFIED  
406 WEST 3rd STREET, OGALLALA, NEBRASKA 69153  
OFFICE: 308-284-8440 [www.dickinsonlandsurveyors.com](http://www.dickinsonlandsurveyors.com)

NOTE: THIS IS NOT A LAND SURVEY PLAT

0' 1000' 2000' 3000'

