

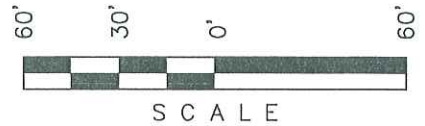


# PETROLEUM DEVELOPMENT CORP.

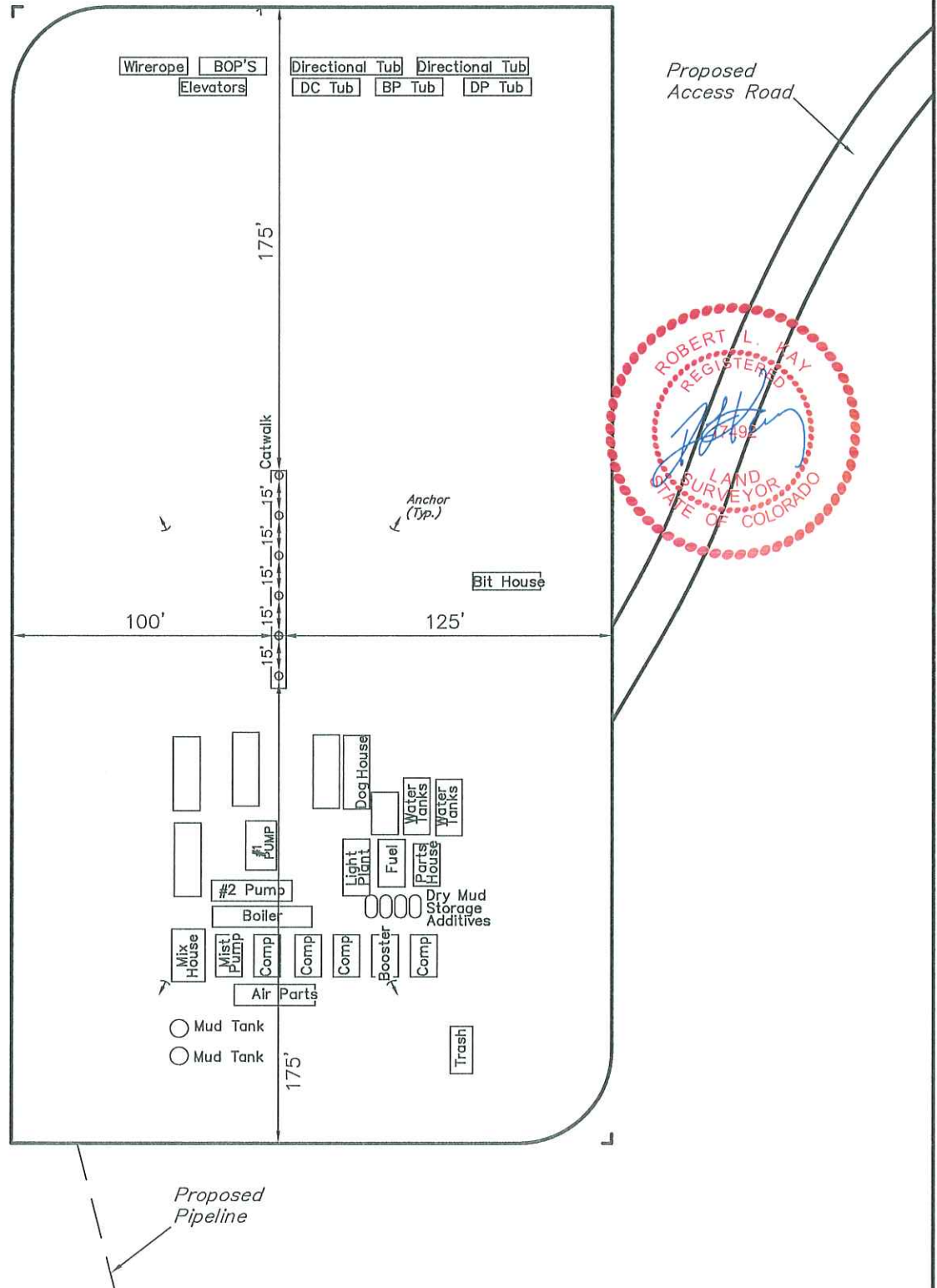
## TYPICAL RIG LAYOUT FOR

PUCKETT #11A-36D, #11B-36D, #11C-36D,  
#11D-36D, #12A-36D & #12B-36D  
SECTION 36, T6S, R97W, 6th P.M.  
LOT 4

SHEET 4 of 9



DATE: 05-12-10  
DRAWN BY: C.H.



UINTAH ENGINEERING & LAND SURVEYING

85 So. 200 East \* Vernal, Utah 84078 \* (435) 789-1017