

T6S, R97W, 6th P.M.

PETROLEUM DEVELOPMENT CORP.

Well location, PUCKETT #12B-36D, located as shown in Lot 4 of Section 36, T6S, R97W, 6th P.M., Garfield County, Colorado.

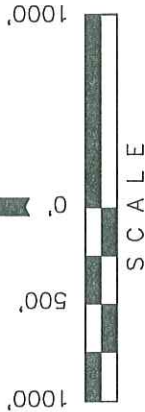
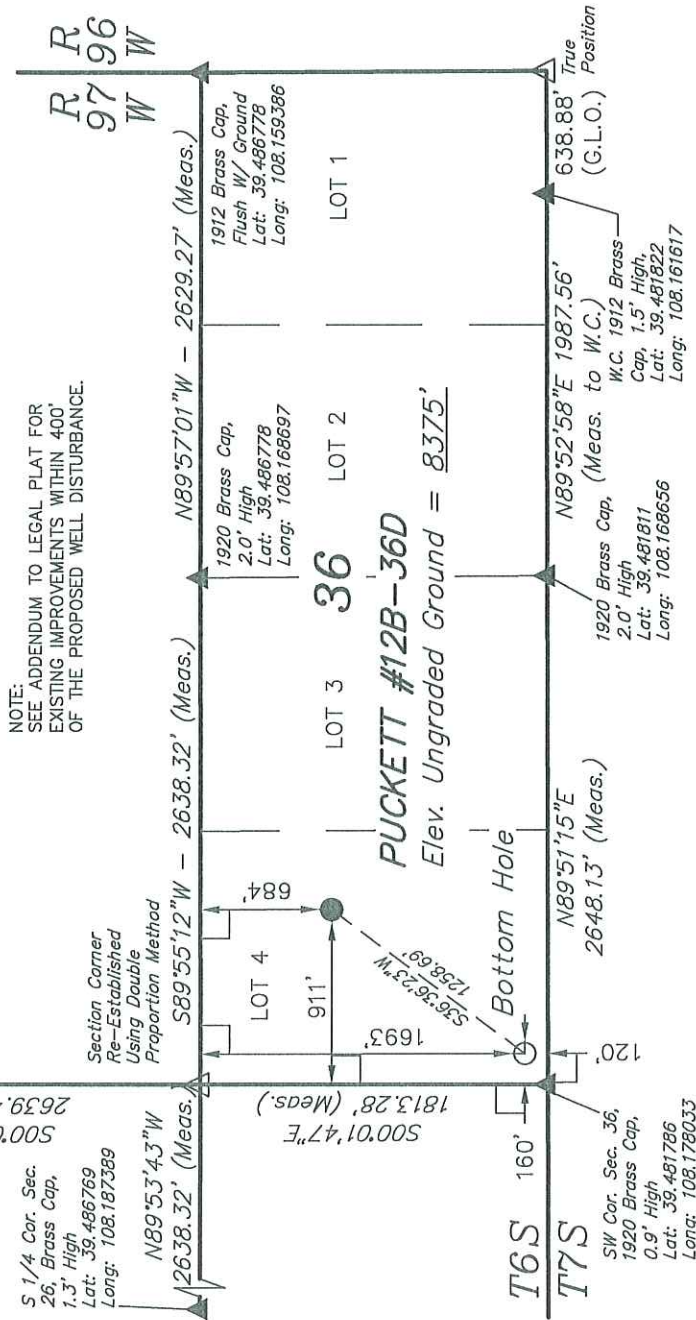
BASIS OF ELEVATION

SPOT ELEVATION AT THE NORTHWEST CORNER OF SECTION 30, T5S, R95W, 6th P.M. TAKEN FROM THE FORKED GULCH QUADRANGLE, COLORADO, GARFIELD COUNTY, 7.5 MINUTE SERIES (TOPOGRAPHICAL MAP) PUBLISHED BY THE UNITED STATES DEPARTMENT OF THE INTERIOR, GEOLOGICAL SURVEY. SAID ELEVATION IS MARKED AS BEING 5966 FEET.

BASIS OF BEARINGS

BASIS OF BEARINGS IS A G.P.S. OBSERVATION.

SHEET 1 of 9



CERTIFICATE

THIS IS TO CERTIFY THAT THE ABOVE PLAT WAS PREPARED FROM FIELD NOTES OF ACTUAL SURVEYS MADE BY ME OR UNDER MY SUPERVISION AND THAT THE SAME ARE TRUE AND CORRECT TO THE BEST OF MY KNOWLEDGE AND BELIEF.

REGISTERED LAND SURVEYOR
REGISTRATION NO. 17492
STATE OF COLORADO

REVISED: 05-12-10 C.H.

UNTAEH ENGINEERING & LAND SURVEYING

85 SOUTH 200 EAST - VERNAL, UTAH 84078

(435) 789-1017

SCALE 1" = 1000'	DATE SURVEYED: 11-14-08	DATE DRAWN: 01-14-09
PARTY J.J. J.L. M.D.	REFERENCES G.L.O. PLAT	
WEATHER COOL	FILE	PETROLEUM DEVELOPMENT CORP.

LEGEND:

— = 90° SYMBOL	NAD 83 (TARGET BOTTOM HOLE)	NAD 83 (SURFACE LOCATION)
● = PROPOSED WELL HEAD.	LATITUDE = 39°28'55.62" (39.482117) LONGITUDE = 108°10'38.88" (108.177467)	LATITUDE = 39°29'05.61" (39.484892) LONGITUDE = 108°10'29.32" (108.174811)
▲ = SECTION CORNERS LOCATED	NAD 27 (TARGET BOTTOM HOLE)	NAD 27 (SURFACE LOCATION)
	LATITUDE = 39°28'55.70" (39.482139) LONGITUDE = 108°10'36.59" (108.176831)	LATITUDE = 39°29'05.69" (39.484914) LONGITUDE = 108°10'27.03" (108.174175)