

Project: Mesa  
 Site: NW Sec 36-T6S-R97W  
 Well: Puckett 12B-36D  
 Wellbore: DD  
 Design: Plan #1



Petroleum Development Corporation

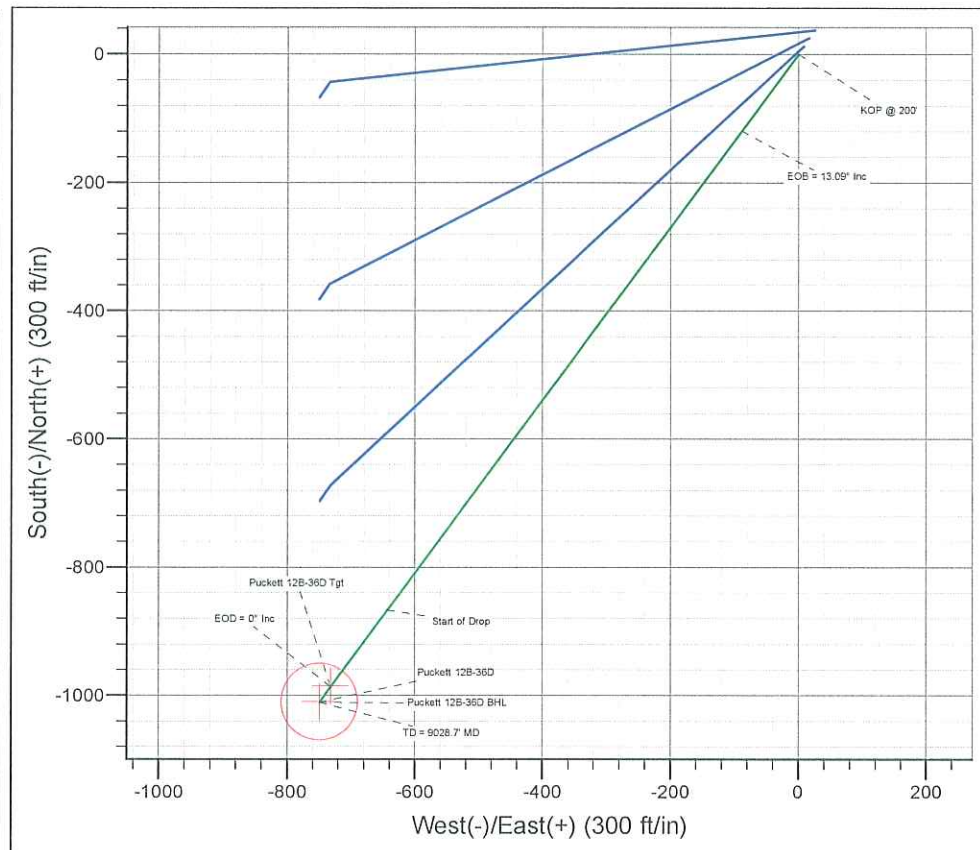
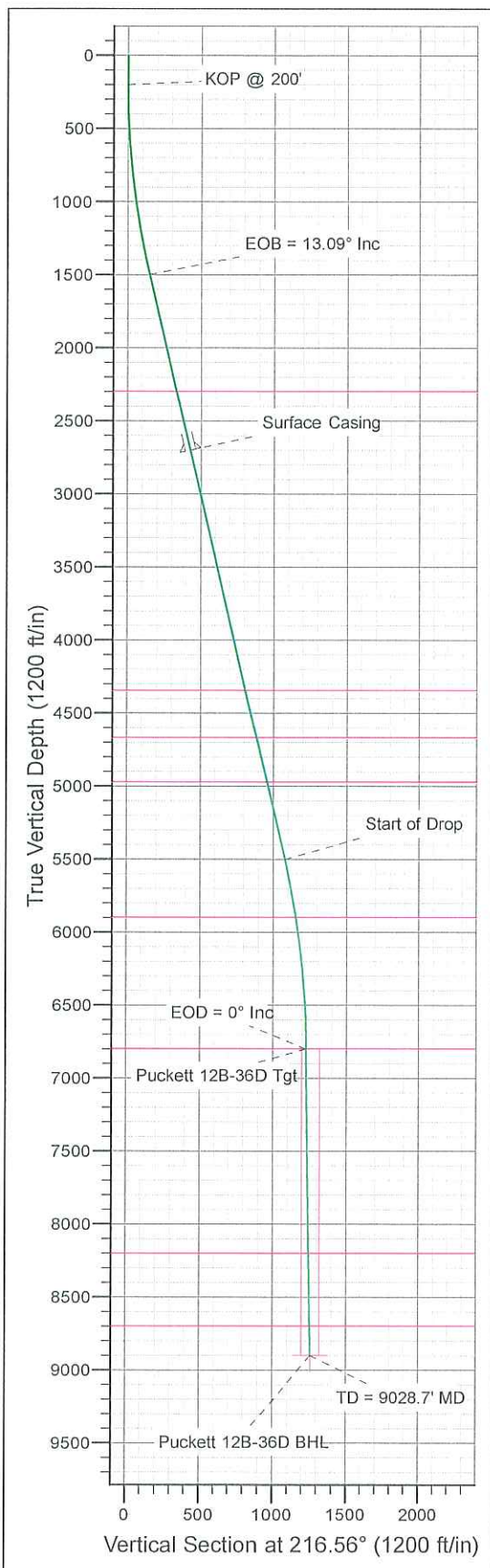
WELL DETAILS: Puckett 12B-36D

+N/-S	+E/-W	Northing	Ground Level:	8375.0	Longitude	Slot
0.0	0.0	1612614.19	Easting	Latitude	-108.174811	
			2245157.02	39.484892		



Azimuths to True North  
 Magnetic North: 10.56°

Magnetic Field  
 Strength: 52307.1nT  
 Dip Angle: 65.72°  
 Date: 2010/05/27  
 Model: IGRF2010-14



#### ANNOTATIONS

TVD	MD	Annotation
200.0	200.0	KOP @ 200'
1497.2	1508.6	EOB = 13.09° Inc
5501.8	5619.9	Start of Drop
6799.0	6928.5	EOD = 0° Inc
8899.0	9028.7	TD = 9028.7' MD

#### FORMATION TOP DETAILS

TVDPath	MDPath	Formation
2299.0	2331.7	Wasatch
4349.0	4436.4	Wasatch "G" Sand
4669.0	4764.9	Fort Union
4974.0	5078.0	Base Fort Union
5899.0	6024.7	Mesaverde/Williams Fk
6799.0	6928.5	Top Gas Cell
8199.0	8328.6	Cameo
8699.0	8828.7	Rollins

#### ON DETAILS

Sec	MD	Inc	Azi	TVD	+N/-S	+E/-W	DLeg	TFace	VSec	Target
1	0.0	0.00	0.00	0.0	0.0	0.0	0.00	0.00	0.0	
2	200.0	0.00	0.00	200.0	0.0	0.0	0.00	0.00	0.0	
3	1508.6	13.09	216.61	1497.2	-119.4	-88.7	1.00	216.61	148.8	
4	5619.9	13.09	216.61	5501.8	-86.7	-643.8	0.00	0.00	1079.6	
5	6928.5	0.00	0.00	6799.0	-986.1	-732.5	1.00	180.00	1228.4	Puckett 12B-36D Tgt
6	7286.8	0.90	214.87	7157.4	-988.4	-734.1	0.25	214.87	1231.2	
7	9028.7	0.90	214.87	8899.0	-1010.7	-749.7	0.00	0.00	1258.4	Puckett 12B-36D BHL

#### WELLBORE TARGET DETAILS (LAT/LONG)

Name	TVD	+N/-S	+E/-W	Latitude	Longitude	Shape
Puckett 12B-36D Tgt	6799.0	-986.1	-732.5	39.482185	-108.177406	Point
Puckett 12B-36D BHL	8899.0	-1010.7	-749.7	39.482117	-108.177467	Circle (Radius: 60.0)

#### CASING DETAILS

TVD	MD	Name	Size
2700.0	2743.4	Surface Casing	

Plan: Plan #1 (Puckett 12B-36D/DD)

Created By: Jon Schweigert Date: 16:04, May 27 2010  
 Checked: Date: \_\_\_\_\_  
 Reviewed: Date: \_\_\_\_\_  
 Approved: Date: \_\_\_\_\_





Database:	RMR1 Database	Local Co-ordinate Reference:	Well Puckett 12B-36D
Company:	Petroleum Development Corp.	TVD Reference:	Puckett 12B-36D KBE @ 8399.0ft (H&P 318)
Project:	Mesa	MD Reference:	Puckett 12B-36D KBE @ 8399.0ft (H&P 318)
Site:	NW Sec 36-T6S-R97W	North Reference:	True
Well:	Puckett 12B-36D	Survey Calculation Method:	Minimum Curvature
Wellbore:	DD		
Design:	Plan #1		

Project	Mesa		
Map System:	US State Plane 1983	System Datum:	Mean Sea Level
Geo Datum:	North American Datum 1983		
Map Zone:	Colorado Central Zone		

Site	NW Sec 36-T6S-R97W				
Site Position:		Northing:	1,612,674.48 ft	Latitude:	39.485061
From:	Lat/Long	Easting:	2,245,201.15 ft	Longitude:	-108.174661
Position Uncertainty:	0.0 ft	Slot Radius:		Grid Convergence:	-1.69 °

Well	Puckett 12B-36D					
Well Position	+N/-S	-61.6 ft	Northing:	1,612,614.18 ft	Latitude:	39.484892
	+E/-W	-42.3 ft	Easting:	2,245,157.02 ft	Longitude:	-108.174811
Position Uncertainty		0.0 ft	Wellhead Elevation:		Ground Level:	8,375.0 ft

Wellbore	DD				
Magnetics	Model Name	Sample Date	Declination (°)	Dip Angle (°)	Field Strength (nT)
	IGRF2010-14	2010/05/27	10.56	65.72	52,307

Design	Plan #1			
Audit Notes:				
Version:	Phase:	PROTOTYPE	Tie On Depth:	0.0
Vertical Section:	Depth From (TVD)	+N/-S	+E/-W	Direction
	(ft)	(ft)	(ft)	(°)
	0.0	0.0	0.0	216.56

Plan Sections										
Measured Depth (ft)	Inclination (°)	Azimuth (°)	Vertical Depth (ft)	+N/-S (ft)	+E/-W (ft)	Dogleg Rate (°/100ft)	Build Rate (°/100ft)	Turn Rate (°/100ft)	TFO (°)	Target
0.0	0.00	0.00	0.0	0.0	0.0	0.00	0.00	0.00	0.00	
200.0	0.00	0.00	200.0	0.0	0.0	0.00	0.00	0.00	0.00	
1,508.6	13.09	216.61	1,497.2	-119.4	-88.7	1.00	1.00	0.00	216.61	
5,619.9	13.09	216.61	5,501.8	-866.7	-643.8	0.00	0.00	0.00	0.00	
6,928.5	0.00	0.00	6,799.0	-986.1	-732.5	1.00	-1.00	0.00	180.00	Puckett 12B-36D Tgt
7,286.8	0.90	214.87	7,157.4	-988.4	-734.1	0.25	0.25	-40.50	214.87	
9,028.7	0.90	214.87	8,899.0	-1,010.7	-749.7	0.00	0.00	0.00	0.00	Puckett 12B-36D BHL



Database:	RMR1 Database	Local Co-ordinate Reference:	Well Puckett 12B-36D
Company:	Petroleum Development Corp.	TVD Reference:	Puckett 12B-36D KBE @ 8399.0ft (H&P 318)
Project:	Mesa	MD Reference:	Puckett 12B-36D KBE @ 8399.0ft (H&P 318)
Site:	NW Sec 36-T6S-R97W	North Reference:	True
Well:	Puckett 12B-36D	Survey Calculation Method:	Minimum Curvature
Wellbore:	DD		
Design:	Plan #1		

Planned Survey

Measured Depth (ft)	Inclination (°)	Azimuth (°)	Vertical Depth (ft)	Subsea Depth (ft)	+N/-S (ft)	+E/-W (ft)	Vertical Section (ft)	Dogleg Rate (°/100ft)	Build Rate (°/100ft)	Turn Rate (°/100ft)
0.0	0.00	0.00	0.0	-8,399.0	0.0	0.0	0.0	0.00	0.00	0.00
100.0	0.00	0.00	100.0	-8,299.0	0.0	0.0	0.0	0.00	0.00	0.00
<b>KOP @ 200'</b>										
200.0	0.00	0.00	200.0	-8,199.0	0.0	0.0	0.0	0.00	0.00	0.00
300.0	1.00	216.61	300.0	-8,099.0	-0.7	-0.5	0.9	1.00	1.00	0.00
400.0	2.00	216.61	400.0	-7,999.0	-2.8	-2.1	3.5	1.00	1.00	0.00
500.0	3.00	216.61	499.9	-7,899.1	-6.3	-4.7	7.9	1.00	1.00	0.00
600.0	4.00	216.61	599.7	-7,799.3	-11.2	-8.3	14.0	1.00	1.00	0.00
700.0	5.00	216.61	699.4	-7,699.6	-17.5	-13.0	21.8	1.00	1.00	0.00
800.0	6.00	216.61	798.9	-7,600.1	-25.2	-18.7	31.4	1.00	1.00	0.00
900.0	7.00	216.61	898.3	-7,500.7	-34.3	-25.5	42.7	1.00	1.00	0.00
1,000.0	8.00	216.61	997.4	-7,401.6	-44.8	-33.2	55.8	1.00	1.00	0.00
1,100.0	9.00	216.61	1,096.3	-7,302.7	-56.6	-42.1	70.5	1.00	1.00	0.00
1,200.0	10.00	216.61	1,194.9	-7,204.1	-69.9	-51.9	87.0	1.00	1.00	0.00
1,300.0	11.00	216.61	1,293.3	-7,105.7	-84.5	-62.8	105.3	1.00	1.00	0.00
1,400.0	12.00	216.61	1,391.2	-7,007.8	-100.5	-74.7	125.2	1.00	1.00	0.00
1,500.0	13.00	216.61	1,488.9	-6,910.1	-117.9	-87.6	146.8	1.00	1.00	0.00
<b>EOB = 13.09° Inc</b>										
1,508.6	13.09	216.61	1,497.2	-6,901.8	-119.4	-88.7	148.8	1.00	1.00	0.00
1,600.0	13.09	216.61	1,586.3	-6,812.7	-136.1	-101.1	169.5	0.00	0.00	0.00
1,700.0	13.09	216.61	1,683.7	-6,715.3	-154.2	-114.6	192.1	0.00	0.00	0.00
1,800.0	13.09	216.61	1,781.1	-6,617.9	-172.4	-128.1	214.8	0.00	0.00	0.00
1,900.0	13.09	216.61	1,878.5	-6,520.5	-190.6	-141.6	237.4	0.00	0.00	0.00
2,000.0	13.09	216.61	1,975.9	-6,423.1	-208.8	-155.1	260.0	0.00	0.00	0.00
2,100.0	13.09	216.61	2,073.3	-6,325.7	-226.9	-168.6	282.7	0.00	0.00	0.00
2,200.0	13.09	216.61	2,170.7	-6,228.3	-245.1	-182.1	305.3	0.00	0.00	0.00
2,300.0	13.09	216.61	2,268.1	-6,130.9	-263.3	-195.6	328.0	0.00	0.00	0.00
<b>Wasatch</b>										
2,331.7	13.09	216.61	2,299.0	-6,100.0	-269.0	-199.9	335.1	0.00	0.00	0.00
2,400.0	13.09	216.61	2,365.5	-6,033.5	-281.5	-209.1	350.6	0.00	0.00	0.00
2,500.0	13.09	216.61	2,462.9	-5,936.1	-299.6	-222.6	373.2	0.00	0.00	0.00
2,600.0	13.09	216.61	2,560.3	-5,838.7	-317.8	-236.1	395.9	0.00	0.00	0.00
2,700.0	13.09	216.61	2,657.7	-5,741.3	-336.0	-249.6	418.5	0.00	0.00	0.00
<b>Surface Casing</b>										
2,743.4	13.09	216.61	2,700.0	-5,699.0	-343.9	-255.4	428.4	0.00	0.00	0.00
2,800.0	13.09	216.61	2,755.1	-5,643.9	-354.2	-263.1	441.2	0.00	0.00	0.00
2,900.0	13.09	216.61	2,852.5	-5,546.5	-372.3	-276.6	463.8	0.00	0.00	0.00
3,000.0	13.09	216.61	2,949.9	-5,449.1	-390.5	-290.1	486.5	0.00	0.00	0.00
3,100.0	13.09	216.61	3,047.3	-5,351.7	-408.7	-303.6	509.1	0.00	0.00	0.00
3,200.0	13.09	216.61	3,144.7	-5,254.3	-426.9	-317.1	531.7	0.00	0.00	0.00
3,300.0	13.09	216.61	3,242.1	-5,156.9	-445.0	-330.6	554.4	0.00	0.00	0.00
3,400.0	13.09	216.61	3,339.5	-5,059.5	-463.2	-344.1	577.0	0.00	0.00	0.00
3,500.0	13.09	216.61	3,436.9	-4,962.1	-481.4	-357.6	599.7	0.00	0.00	0.00
3,600.0	13.09	216.61	3,534.3	-4,864.7	-499.6	-371.1	622.3	0.00	0.00	0.00
3,700.0	13.09	216.61	3,631.7	-4,767.3	-517.7	-384.6	644.9	0.00	0.00	0.00
3,800.0	13.09	216.61	3,729.2	-4,669.8	-535.9	-398.1	667.6	0.00	0.00	0.00
3,900.0	13.09	216.61	3,826.6	-4,572.4	-554.1	-411.6	690.2	0.00	0.00	0.00
4,000.0	13.09	216.61	3,924.0	-4,475.0	-572.3	-425.1	712.9	0.00	0.00	0.00
4,100.0	13.09	216.61	4,021.4	-4,377.6	-590.4	-438.6	735.5	0.00	0.00	0.00
4,200.0	13.09	216.61	4,118.8	-4,280.2	-608.6	-452.1	758.1	0.00	0.00	0.00
4,300.0	13.09	216.61	4,216.2	-4,182.8	-626.8	-465.6	780.8	0.00	0.00	0.00
4,400.0	13.09	216.61	4,313.6	-4,085.4	-645.0	-479.1	803.4	0.00	0.00	0.00
<b>Wasatch "G" Sand</b>										
4,436.4	13.09	216.61	4,349.0	-4,050.0	-651.6	-484.0	811.7	0.00	0.00	0.00

Database:	RMR1 Database	Local Co-ordinate Reference:	Well Puckett 12B-36D
Company:	Petroleum Development Corp.	TVD Reference:	Puckett 12B-36D KBE @ 8399.0ft (H&P 318)
Project:	Mesa	MD Reference:	Puckett 12B-36D KBE @ 8399.0ft (H&P 318)
Site:	NW Sec 36-T6S-R97W	North Reference:	True
Well:	Puckett 12B-36D	Survey Calculation Method:	Minimum Curvature
Wellbore:	DD		
Design:	Plan #1		

Planned Survey

Measured Depth (ft)	Inclination (°)	Azimuth (°)	Vertical Depth (ft)	Subsea Depth (ft)	+N/-S (ft)	+E/-W (ft)	Vertical Section (ft)	Dogleg Rate (°/100ft)	Build Rate (°/100ft)	Turn Rate (°/100ft)
4,500.0	13.09	216.61	4,411.0	-3,988.0	-663.1	-492.6	826.1	0.00	0.00	0.00
4,600.0	13.09	216.61	4,508.4	-3,890.6	-681.3	-506.1	848.7	0.00	0.00	0.00
4,700.0	13.09	216.61	4,605.8	-3,793.2	-699.5	-519.6	871.3	0.00	0.00	0.00
<b>Fort Union</b>										
4,764.9	13.09	216.61	4,669.0	-3,730.0	-711.3	-528.4	886.0	0.00	0.00	0.00
4,800.0	13.09	216.61	4,703.2	-3,695.8	-717.7	-533.1	894.0	0.00	0.00	0.00
4,900.0	13.09	216.61	4,800.6	-3,598.4	-735.8	-546.6	916.6	0.00	0.00	0.00
5,000.0	13.09	216.61	4,898.0	-3,501.0	-754.0	-560.1	939.3	0.00	0.00	0.00
<b>Base Fort Union</b>										
5,078.0	13.09	216.61	4,974.0	-3,425.0	-768.2	-570.6	956.9	0.00	0.00	0.00
5,100.0	13.09	216.61	4,995.4	-3,403.6	-772.2	-573.6	961.9	0.00	0.00	0.00
5,200.0	13.09	216.61	5,092.8	-3,306.2	-790.4	-587.1	984.5	0.00	0.00	0.00
5,300.0	13.09	216.61	5,190.2	-3,208.8	-808.5	-600.6	1,007.2	0.00	0.00	0.00
5,400.0	13.09	216.61	5,287.6	-3,111.4	-826.7	-614.1	1,029.8	0.00	0.00	0.00
5,500.0	13.09	216.61	5,385.0	-3,014.0	-844.9	-627.6	1,052.5	0.00	0.00	0.00
5,600.0	13.09	216.61	5,482.4	-2,916.6	-863.1	-641.1	1,075.1	0.00	0.00	0.00
<b>Start of Drop</b>										
5,619.9	13.09	216.61	5,501.8	-2,897.2	-866.7	-643.8	1,079.6	0.00	0.00	0.00
5,700.0	12.28	216.61	5,579.9	-2,819.1	-880.8	-654.3	1,097.2	1.00	-1.00	0.00
5,800.0	11.28	216.61	5,677.8	-2,721.2	-897.2	-666.4	1,117.6	1.00	-1.00	0.00
5,900.0	10.28	216.61	5,776.1	-2,622.9	-912.2	-677.6	1,136.3	1.00	-1.00	0.00
6,000.0	9.28	216.61	5,874.6	-2,524.4	-925.8	-687.7	1,153.3	1.00	-1.00	0.00
<b>Mesaverde/Williams Fk *</b>										
6,024.7	9.04	216.61	5,899.0	-2,500.0	-929.0	-690.1	1,157.3	1.00	-1.00	0.00
6,100.0	8.28	216.61	5,973.4	-2,425.6	-938.1	-696.8	1,168.6	1.00	-1.00	0.00
6,200.0	7.28	216.61	6,072.5	-2,326.5	-949.0	-704.9	1,182.1	1.00	-1.00	0.00
6,300.0	6.28	216.61	6,171.8	-2,227.2	-958.5	-712.0	1,194.0	1.00	-1.00	0.00
6,400.0	5.28	216.61	6,271.3	-2,127.7	-966.6	-718.0	1,204.0	1.00	-1.00	0.00
6,500.0	4.28	216.61	6,370.9	-2,028.1	-973.2	-723.0	1,212.4	1.00	-1.00	0.00
6,600.0	3.28	216.61	6,470.7	-1,928.3	-978.5	-726.9	1,219.0	1.00	-1.00	0.00
6,700.0	2.28	216.61	6,570.6	-1,828.4	-982.4	-729.8	1,223.8	1.00	-1.00	0.00
6,800.0	1.28	216.61	6,670.6	-1,728.4	-984.9	-731.6	1,227.0	1.00	-1.00	0.00
6,900.0	0.28	216.61	6,770.5	-1,628.5	-986.0	-732.5	1,228.3	1.00	-1.00	0.00
<b>EOD = 0° Inc - Top Gas Cell - Puckett 12B-36D Tgt</b>										
6,928.5	0.00	0.00	6,799.0	-1,600.0	-986.1	-732.5	1,228.4	1.00	-1.00	0.00
7,000.0	0.18	214.87	6,870.5	-1,528.5	-986.2	-732.6	1,228.5	0.25	0.25	0.00
7,100.0	0.43	214.87	6,970.5	-1,428.5	-986.6	-732.9	1,229.0	0.25	0.25	0.00
7,200.0	0.68	214.87	7,070.5	-1,328.5	-987.4	-733.4	1,230.0	0.25	0.25	0.00
7,286.8	0.90	214.87	7,157.4	-1,241.6	-988.4	-734.1	1,231.2	0.25	0.25	0.00
7,300.0	0.90	214.87	7,170.5	-1,228.5	-988.6	-734.2	1,231.4	0.00	0.00	0.00
7,400.0	0.90	214.87	7,270.5	-1,128.5	-989.9	-735.1	1,233.0	0.00	0.00	0.00
7,500.0	0.90	214.87	7,370.5	-1,028.5	-991.1	-736.0	1,234.5	0.00	0.00	0.00
7,600.0	0.90	214.87	7,470.5	-928.5	-992.4	-736.9	1,236.1	0.00	0.00	0.00
7,700.0	0.90	214.87	7,570.5	-828.5	-993.7	-737.8	1,237.7	0.00	0.00	0.00
7,800.0	0.90	214.87	7,670.5	-728.5	-995.0	-738.7	1,239.2	0.00	0.00	0.00
7,900.0	0.90	214.87	7,770.5	-628.5	-996.3	-739.6	1,240.8	0.00	0.00	0.00
8,000.0	0.90	214.87	7,870.4	-528.6	-997.5	-740.5	1,242.3	0.00	0.00	0.00
8,100.0	0.90	214.87	7,970.4	-428.6	-998.8	-741.4	1,243.9	0.00	0.00	0.00
8,200.0	0.90	214.87	8,070.4	-328.6	-1,000.1	-742.3	1,245.5	0.00	0.00	0.00
8,300.0	0.90	214.87	8,170.4	-228.6	-1,001.4	-743.2	1,247.0	0.00	0.00	0.00
<b>Cameo</b>										
8,328.6	0.90	214.87	8,199.0	-200.0	-1,001.8	-743.4	1,247.5	0.00	0.00	0.00
8,400.0	0.90	214.87	8,270.4	-128.6	-1,002.7	-744.1	1,248.6	0.00	0.00	0.00



Database:	RMR1 Database	Local Co-ordinate Reference:	Well Puckett 12B-36D
Company:	Petroleum Development Corp.	TVD Reference:	Puckett 12B-36D KBE @ 8399.0ft (H&P 318)
Project:	Mesa	MD Reference:	Puckett 12B-36D KBE @ 8399.0ft (H&P 318)
Site:	NW Sec 36-T6S-R97W	North Reference:	True
Well:	Puckett 12B-36D	Survey Calculation Method:	Minimum Curvature
Wellbore:	DD		
Design:	Plan #1		

Planned Survey											
Measured Depth (ft)	Inclination (°)	Azimuth (°)	Vertical Depth (ft)	Subsea Depth (ft)	+N/-S (ft)	+E/-W (ft)	Vertical Section (ft)	Dogleg Rate (°/100ft)	Build Rate (°/100ft)	Turn Rate (°/100ft)	
8,500.0	0.90	214.87	8,370.4	-28.6	-1,004.0	-744.9	1,250.2	0.00	0.00	0.00	
8,600.0	0.90	214.87	8,470.4	71.4	-1,005.2	-745.8	1,251.7	0.00	0.00	0.00	
8,700.0	0.90	214.87	8,570.4	171.4	-1,006.5	-746.7	1,253.3	0.00	0.00	0.00	
8,800.0	0.90	214.87	8,670.3	271.3	-1,007.8	-747.6	1,254.8	0.00	0.00	0.00	
Rollins											
8,828.7	0.90	214.87	8,699.0	300.0	-1,008.2	-747.9	1,255.3	0.00	0.00	0.00	
8,900.0	0.90	214.87	8,770.3	371.3	-1,009.1	-748.5	1,256.4	0.00	0.00	0.00	
9,000.0	0.90	214.87	8,870.3	471.3	-1,010.4	-749.4	1,258.0	0.00	0.00	0.00	
Puckett 12B-36D BHL											
9,028.7	0.90	214.87	8,899.0	500.0	-1,010.7	-749.7	1,258.4	0.00	0.00	0.00	

Design Targets										
Target Name	Dip Angle (°)	Dip Dir. (°)	TVD (ft)	+N/-S (ft)	+E/-W (ft)	Northing (ft)	Easting (ft)	Latitude	Longitude	
- hit/miss target										
- Shape										
Puckett 12B-36D Tgt	0.00	0.00	6,799.0	-986.1	-732.5	1,611,650.08	2,244,395.81	39.482185	-108.177406	
- plan hits target center										
- Point										
Puckett 12B-36D BHL	0.00	0.00	8,899.0	-1,010.7	-749.7	1,611,625.95	2,244,377.92	39.482117	-108.177467	
- plan hits target center										
- Circle (radius 60.0)										

Casing Points						
Measured Depth (ft)	Vertical Depth (ft)	Name	Casing Diameter (")	Hole Diameter (")		
2,743.4	2,700.0	Surface Casing				

Formations						
Measured Depth (ft)	Vertical Depth (ft)	Name	Lithology	Dip (°)	Dip Direction (°)	
2,331.7	2,299.0	Wasatch				
4,436.4	4,349.0	Wasatch "G" Sand				
4,764.9	4,669.0	Fort Union				
5,078.0	4,974.0	Base Fort Union				
6,024.7	5,899.0	Mesaverde/Williams Fk	*			
6,928.5	6,799.0	Top Gas Cell				
8,328.6	8,199.0	Cameo				
8,828.7	8,699.0	Rollins				

Database:	RMR1 Database	Local Co-ordinate Reference:	Well Puckett 12B-36D
Company:	Petroleum Development Corp.	TVD Reference:	Puckett 12B-36D KBE @ 8399.0ft (H&P 318)
Project:	Mesa	MD Reference:	Puckett 12B-36D KBE @ 8399.0ft (H&P 318)
Site:	NW Sec 36-T6S-R97W	North Reference:	True
Well:	Puckett 12B-36D	Survey Calculation Method:	Minimum Curvature
Wellbore:	DD		
Design:	Plan #1		

### Plan Annotations

Measured Depth (ft)	Vertical Depth (ft)	Local Coordinates		Comment
		+N/-S (ft)	+E/-W (ft)	
200.0	200.0	0.0	0.0	KOP @ 200'
1,508.6	1,497.2	-119.4	-88.7	EOB = 13.09° Inc
5,619.9	5,501.8	-866.7	-643.8	Start of Drop
6,928.5	6,799.0	-986.1	-732.5	EOD = 0° Inc
9,028.7	8,899.0	-1,010.7	-749.7	TD = 9028.7' MD