

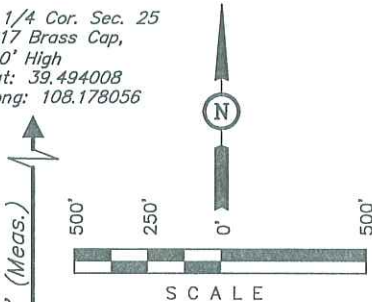
PETROLEUM DEVELOPMENT CORP.

BOTTOM HOLE FOOTAGE FOR

PUCKETT #11A-36D, #11B-36D, #11C-36D,
#11D-36D, #12A-36D & #12B-36D
SECTION 36, T6S, R97W, 6th P.M.
LOT 4

SHEET 9 of 9

W 1/4 Cor. Sec. 25
1917 Brass Cap,
2.0' High
Lat: 39.494008
Long: 108.178056



DATE: 05-17-10
DRAWN BY: C.H.



S00°02'15"E - 2639.41' (Meas.)

Section Corner
Re-Established
Using Double
Proportion Method

S89°55'12"W - 2638.32' (Meas.)

S00°01'47"E - 1813.28' (Meas.)

BOTTOM HOLE
PUCKETT #11A-36D

BOTTOM HOLE
PUCKETT #11B-36D

BOTTOM HOLE
PUCKETT #11C-36D

BOTTOM HOLE
PUCKETT #11D-36D

BOTTOM HOLE
PUCKETT #11D-36D

BOTTOM HOLE
PUCKETT #11D-36D

BOTTOM HOLE
PUCKETT #11D-36D

BOTTOM HOLE
PUCKETT #11D-36D

BOTTOM HOLE
PUCKETT #11D-36D

BOTTOM HOLE
PUCKETT #11D-36D

BOTTOM HOLE
PUCKETT #11D-36D

BOTTOM HOLE
PUCKETT #11D-36D

1920 Brass Cap,
0.9' High
Lat: 39.481786
Long: 108.178033

N89°51'15"E - 2648.13' (Meas.)

1920 Brass Cap,
2.0' High
Lat: 39.486778
Long: 108.168697

Sec. 36

LOT 3

LOT 2

1920 Brass Cap,
2.0' High
Lat: 39.481811
Long: 108.168656