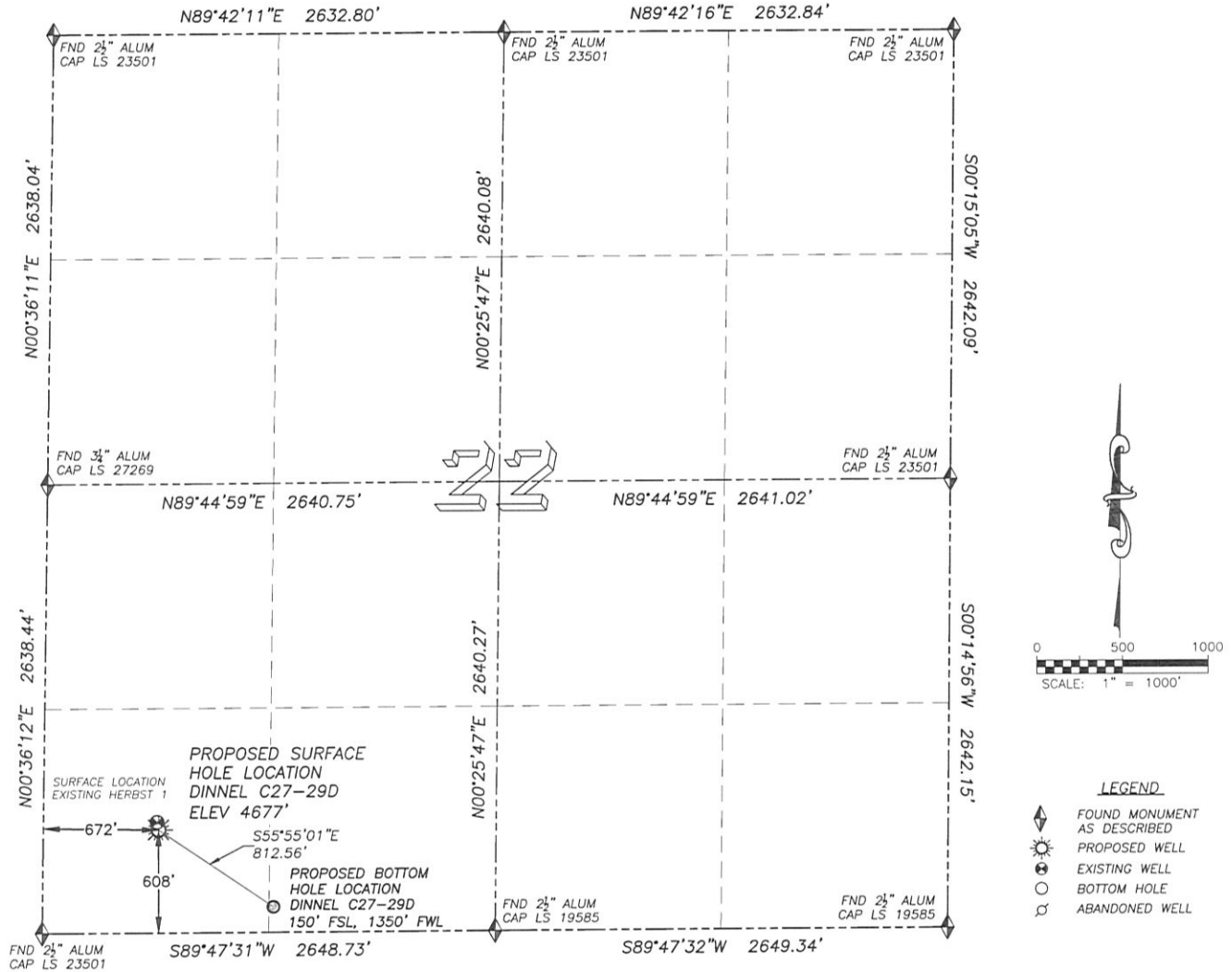


WELL LOCATION CERTIFICATE

DINNEL C27-29D

SECTION 22, TOWNSHIP 4 NORTH, RANGE 64 WEST OF THE 6TH PRINCIPAL MERIDIAN

**NAD 83 LATITUDE AND LONGITUDE****DINNEL C27-29D SURFACE HOLE:**

LATITUDE: N40.29234°
 LONGITUDE: W104.54400°
 ELEVATION: 4677'
 PDOP 1.3
 608' FSL, 672' FSL

BOTTOM HOLE:

LATITUDE: N40.29109°
 LONGITUDE: W104.54159°
 150' FSL, 1350' FSL

NEAREST EXISTING WELL:

HERBST 1 SURFACE HOLE
 LATITUDE: N40.29247°
 LONGITUDE: W104.54404°
 ELEVATION: 4678'
 47' NORTH

QUARTER/QUARTER: SW4/SW4

NEAREST APPARENT PROPERTY LINE:
 390'± SOUTHWEST

IN ACCORDANCE WITH A REQUEST FROM ROBBIE MILLER OF NOBLE ENERGY INC., DALEY LAND SURVEYING, INC. HAS DETERMINED THE SURFACE LOCATION OF THE DINNEL C27-29D WELL TO BE 608' FSL, 672' FSL, AS MEASURED AT NINETY (90) DEGREES FROM THE SECTION LINES OF SECTION 22, TOWNSHIP 4 NORTH, RANGE 64 WEST OF THE 6TH PRINCIPAL MERIDIAN, WELD COUNTY COLORADO. THE BOTTOM HOLE LOCATION, PROVIDED BY THE CLIENT, IS TO BE 150' FSL, 1350' FSL OF SEC. 22.

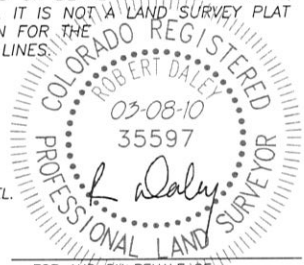
I HEREBY CERTIFY THAT THIS WELL LOCATION CERTIFICATE WAS PREPARED BY ME OR UNDER MY DIRECT SUPERVISION, THAT THE WORK WAS COMPLETED ON 3/4/2010 FOR AND ON BEHALF OF NOBLE ENERGY, INC., AND THAT THIS MAP DOES NOT REPRESENT A BOUNDARY SURVEY, IT IS NOT A LAND SURVEY PLAT OR AN IMPROVEMENT SURVEY PLAT AND IT IS NOT TO BE RELIED UPON FOR THE ESTABLISHMENT OF FENCE, BUILDING OR OTHER FUTURE IMPROVEMENT LINES.

NOTES:

- 1) BEARINGS FOR THIS MAP ARE ASSUMED AND BASED UPON GPS OBSERVATIONS MADE BETWEEN MONUMENTS LOCATED AT THE SOUTHWEST AND SOUTH QUARTER CORNERS OF SECTION 22, T.4N., R.64W.
- 2) HORIZONTAL DATUM IS NAD83.
- 3) VERTICAL DATUM IS NAVD88. ELEVATIONS ARE DERIVED FROM GPS OBSERVATIONS PROCESSED THROUGH OPUS, UTILIZING THE GEOID03 MODEL.
- 4) SEE VISIBLE IMPROVEMENTS EXHIBIT FOR VISIBLE IMPROVEMENTS WITHIN 600' OF PROPOSED SURFACE HOLE LOCATION.
- 5) SURFACE USE: AGRICULTURAL.

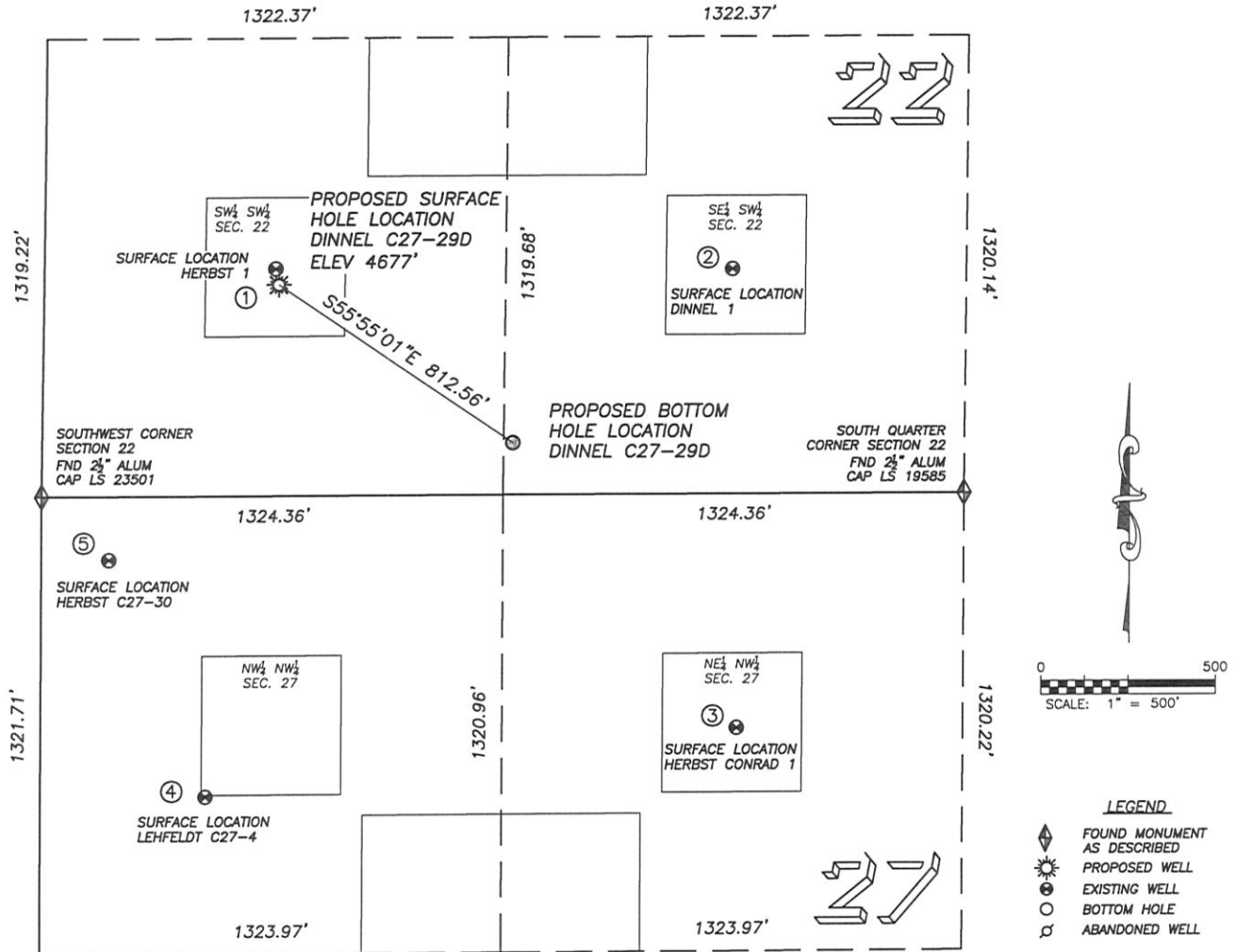
NOTICE: According to Colorado law you MUST commence any legal action based upon any defect in this W.L.C. within three years after you first discover such defect. In no event may any action based upon any such defect in this W.L.C. be commenced more than ten years from the date of the certification shown herein.

FOR AND ON BEHALF OF
 DALEY LAND SURVEYING INC.,
 Robert Daley, PLS 35597



SITE SKETCH DINNEL C27-29D

SECTION 22, TOWNSHIP 4 NORTH, RANGE 64 WEST OF THE 6TH PRINCIPAL MERIDIAN



①

HERBST 1
SW/SW SEC. 22
654' FSL, 663' FWL
846' NW OF PROPOSED
BOTTOM HOLE LOCATION
LAT. N40.29247°
LONG. W104.54404°
EL: 4678'
PDOP 2.4

②

DARLENE DINNEL 1
SE/SW SEC. 22
648' FSL, 1975' FWL
805' NE OF PROPOSED
BOTTOM HOLE LOCATION
LAT. N40.29247°
LONG. W104.53934°
EL: 4671'
PDOP 1.3

③

HERBST CONRAD 1
NE/NW SEC. 27
675' FNL, 1999' FWL
1046' SE OF PROPOSED
BOTTOM HOLE LOCATION
LAT. N40.28884°
LONG. W104.53928°
EL: 4673'
PDOP 2.4

④

LEHFELDT C27-4
NW/NW SEC. 27
866' FNL, 474' FWL
1347' SW OF PROPOSED
BOTTOM HOLE LOCATION
LAT. N40.28830°
LONG. W104.54475°
EL: 4683'
PDOP 2.5

⑤

HERBST C27-30
NW/NW SEC. 27
183' FNL, 194' FWL
1207' SW OF PROPOSED
BOTTOM HOLE LOCATION
LAT. N40.29017°
LONG. W104.54575°
EL: 4687'
PDOP 1.8

NOTES:

- 1) THIS DOES NOT REPRESENT A BOUNDARY SURVEY
- 2) THE LATITUDES AND LONGITUDES SHOWN ARE REFERENCED TO NAD83
- 3) DATUM FOR ELEVATION IS NAVD88. ELEVATIONS ARE DERIVED FROM GPS-RTK OBSERVATIONS PROCESSED THROUGH OPUS, UTILIZING THE GEOID03 MODEL.