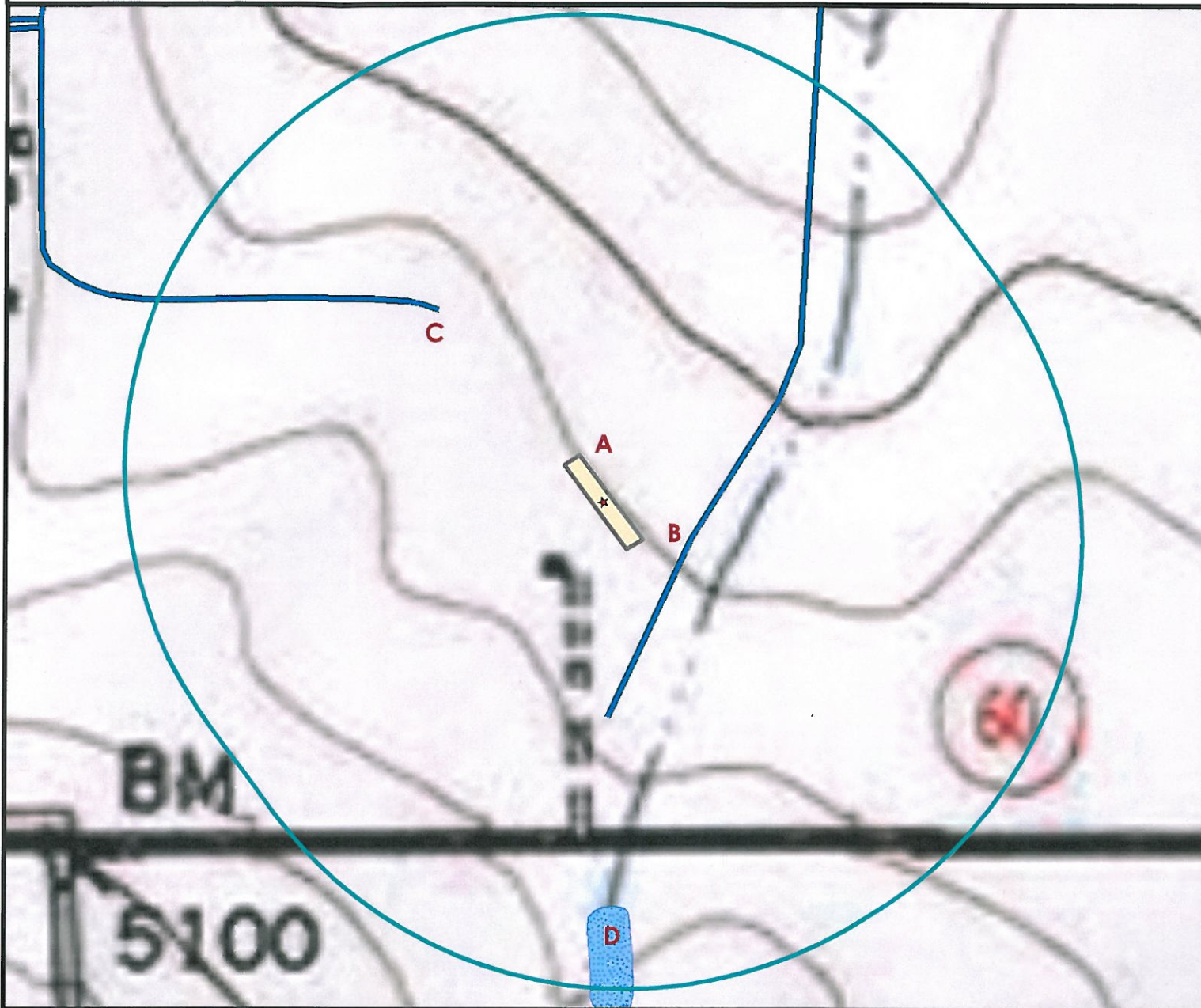


Hydrology Map



A. Proposed Facility MURDOCK 34-14.

B. Intermittent Stream is 216' SE.

C. Earthen Ditch is 574' NW.

D. Intermittent Lake is 918' S.

★ All Measurements from Reference Point



Legend

- | | |
|--|----------------------|
| | ★ Reference Point |
| | Proposed Facility |
| | Oil & Gas Equipment |
| | Water Body |
| | Utility Box |
| | Railroad |
| | Fence |
| | Overhead Power Line |
| | Underground Pipeline |
| | Access Road |
| | Ditch/Stream |
| | Concrete Ditch |

1000ft Radius Map of Surface Waters and Riparian Areas

MURDOCK 34-14 Facility

Surface Location: T5N R68W S34

Field Date: 5/2/2010
 Drawing Date: 6/12/2010
 Drafter: DMM
 Checked By: BHF

Topographic data courtesy of USGS

Prepared for:
 S & P ENERGY, LLC



Use our resources to find yours!
www.petro-fs.com

1801 W. 13th Ave Suite 207
 Denver, CO 80204 Rifle, CO 81650
 (303) 928-7128 (970) 625-4740