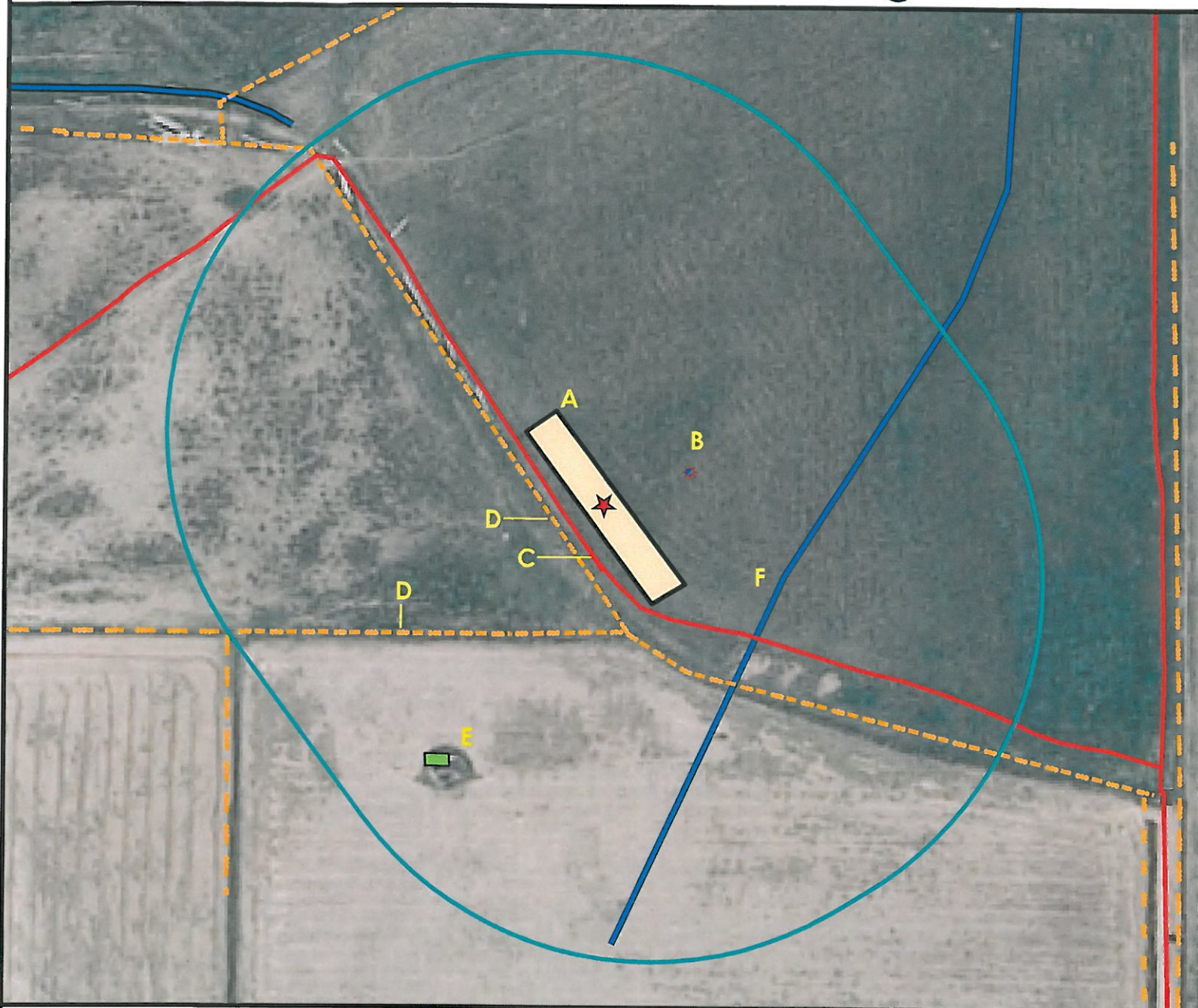


# Location Drawing



A. Proposed Facility MURDOCK 34-14.

D. Fences are 56' SW and 179' SW.

★ All Measurements from Reference Point.

B. Proposed Well MURDOCK 34-14 is 97' NE.

E. Equine Facility is 326' SW.

Latitude: 40.351257  
Longitude: -104.99522  
Coordinates in NAD 83

C. Access Road is 41' SW.

F. Intermittent Stream is 216' SE.



## Legend

- ★ Reference Point
- Proposed Well
- Existing Well
- Plugged Well
- Water Well
- CattleGuard/Gate
- Bridge
- Disturbance Area
- 400' Radius
- Facilities Enclosure
- Building/Residence
- Proposed Facility
- Water Body
- Utility Box
- Railroad
- Fence
- Overhead Power Line
- Underground Pipeline
- Access Road
- Ditch/Stream
- Concrete Ditch

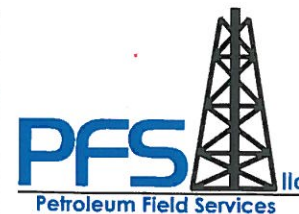
## 400ft Radius Map MURDOCK 34-14 Facility

Surface Location: T5N R68W S34  
Description of surface use: Open Field

Field Date: 5/2/2010  
Drawing Date: 6/12/2010  
Drafter: DMM  
Checked By: BHF

Aerial Photo supplied by NAIP (2009)

Prepared for:  
S & P ENERGY, LLC



Use our resources to find yours!  
[www.petro-fs.com](http://www.petro-fs.com)

1801 W. 13th Ave Suite 207  
Denver, CO 80204  
(303) 928-7128  
111 E. Third Street  
Rifle, CO 81650  
(970) 625-4740