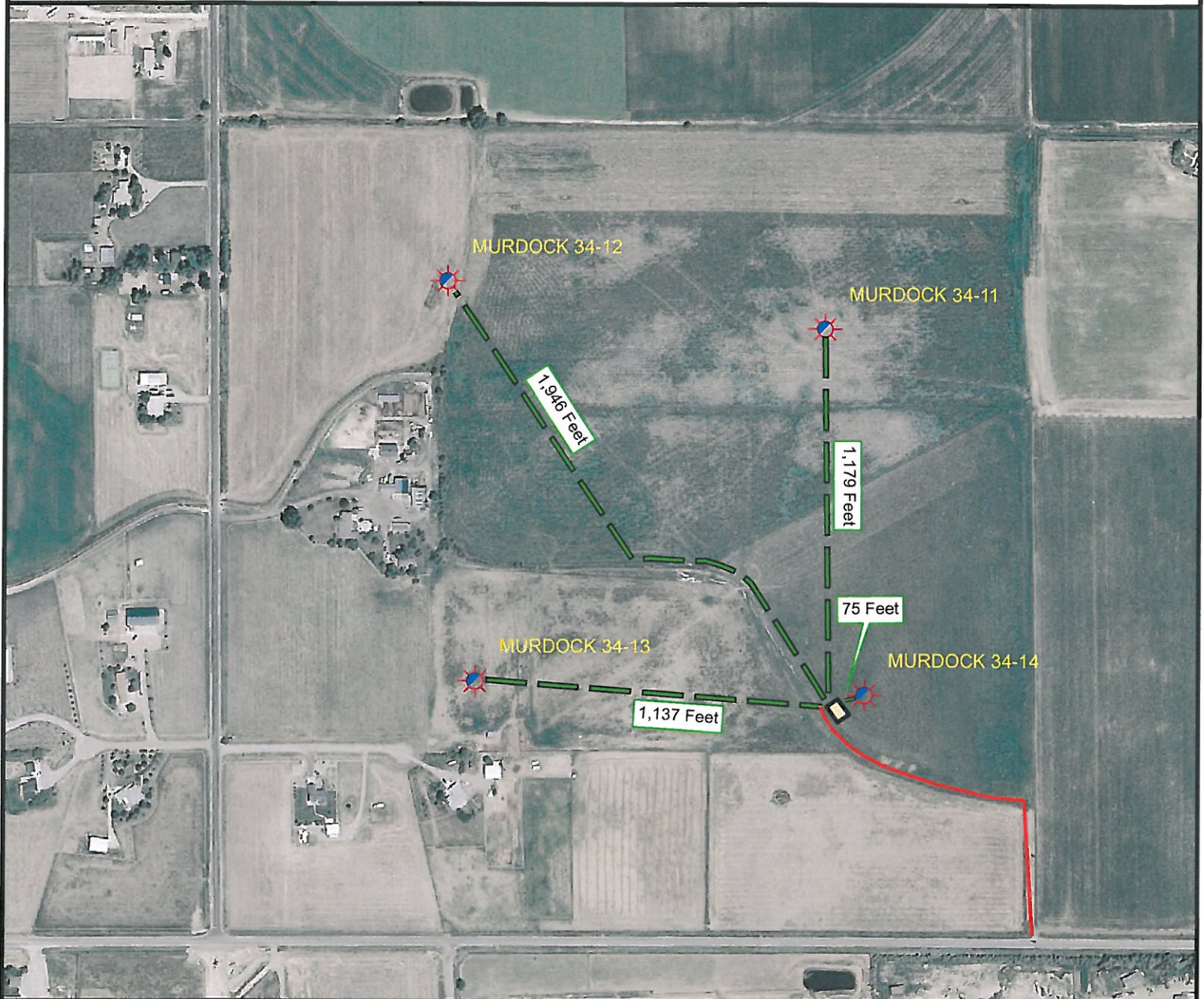





Facility Location Planning Drawing



0 250 500 1,000 Feet

Legend

-  Proposed MURDOCK Wells
-  Proposed Access Road
-  Proposed Pipeline

Planning Drawing

MURDOCK

Surface Location: T5N R68W S34
Description of surface use: Open Field

Field Date: N/A
Drawing Date: 5/10/2010
Drafter: DMM
Checked By: BHF

Aerial Photo supplied by NAIP (2009)

Prepared for:
S & P ENERGY, LLC



Use our resources to find yours!
www.petro-fs.com

1801 W. 13th Ave Suite 207
Denver, CO 80204 Rifle, CO 81650
(303) 928-7128 (970) 625-4740