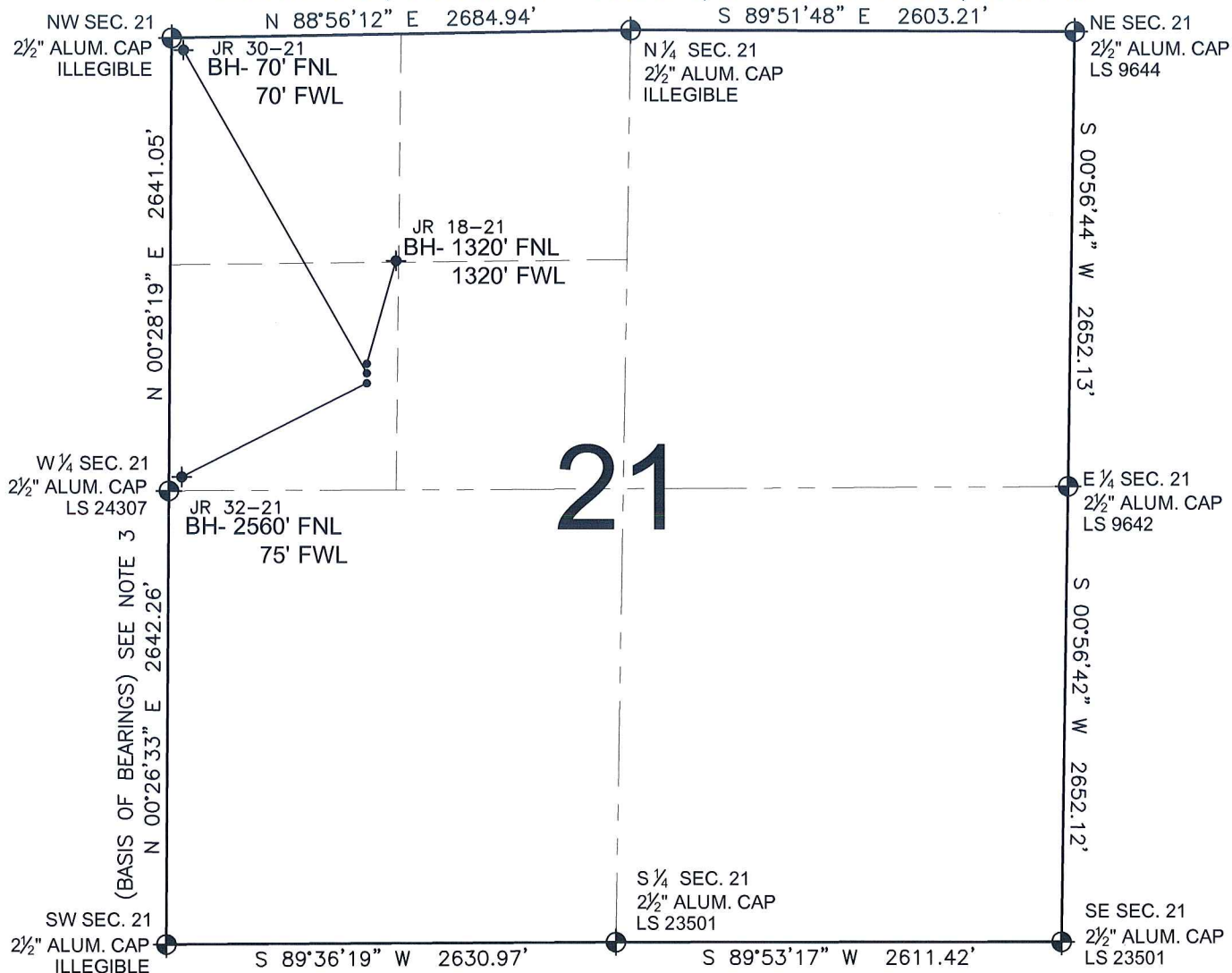


# PAD DRAWING - JR 3 PAD

SECTION 21, TOWNSHIP 4 NORTH, RANGE 65 WEST, 6TH P.M.



## LEGEND

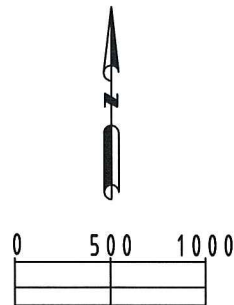
- Circle with dot = EXISTING MONUMENT
- Diamond = PROPOSED WELL
- Cross = BOTTOM HOLE
- Diamond with dot = EXISTING WELL
- BH = BOTTOM HOLE

## NOTES:

- THIS SURVEY WAS DONE BY GPS METHODS AND CONFORMS TO THE MINIMUM STANDARDS SET BY THE C.O.G.C.C., RULE NO. 215
- ELEVATIONS SHOWN AT THE WELL HEAD, AS WELL AS HORIZONTAL CONTROL, ARE BASED ON GPS-RTK VALUES DERIVED FROM DOING 2-HOUR STATIC GPS SESSIONS AND REDUCTIONS USING O.P.U.S. SOLUTIONS.  
VERTICAL = NAVD88; HORIZONTAL = NAD83/92
- THE BEARINGS SHOWN HEREON ARE BASED ON GPS OBSERVATIONS BETWEEN THE MONUMENTS SHOWN HEREON AS FOUND ON THE FIELD DATE BELOW.
- DISTANCES SHOWN ARE AT GROUND LEVEL, AS MEASURED IN THE FIELD, WITH TIES TO WELLS MEASURED AT A PERPENDICULAR TO SECTION LINES.

## NOTES:

- JR 18-21 TO BE AT 1918' FNL, 1152' FWL.
- BOTTOM HOLE AT 1320' FNL & 1320' FWL.
- JR 30-21 TO BE AT 1934' FNL, 1152' FWL.
- BOTTOM HOLE AT 70' FNL & 70' FWL.
- JR 32-21 TO BE AT 1950' FNL, 1152' FWL.
- BOTTOM HOLE AT 2560' FNL & 75' FWL.



## REVISIONS

INITIAL	DATE

PREPARED BY:

**PFS**   
 Petroleum Field Services, LLC  
 1801 W. 13th Ave.  
 Denver, CO 80204

KERR-MCGEE OIL & GAS ONSHORE LP

FIELD DATE:

04-12-10

DRAWING DATE:

04-13-10

BY:

SMF

PAD NAME:

JR 3 PAD

SURFACE LOCATION:

WELD COUNTY, COLORADO  
 SW 1/4 NW 1/4, SEC. 21, T4N, R65W