

DALEY LAND SURVEYING, INC.

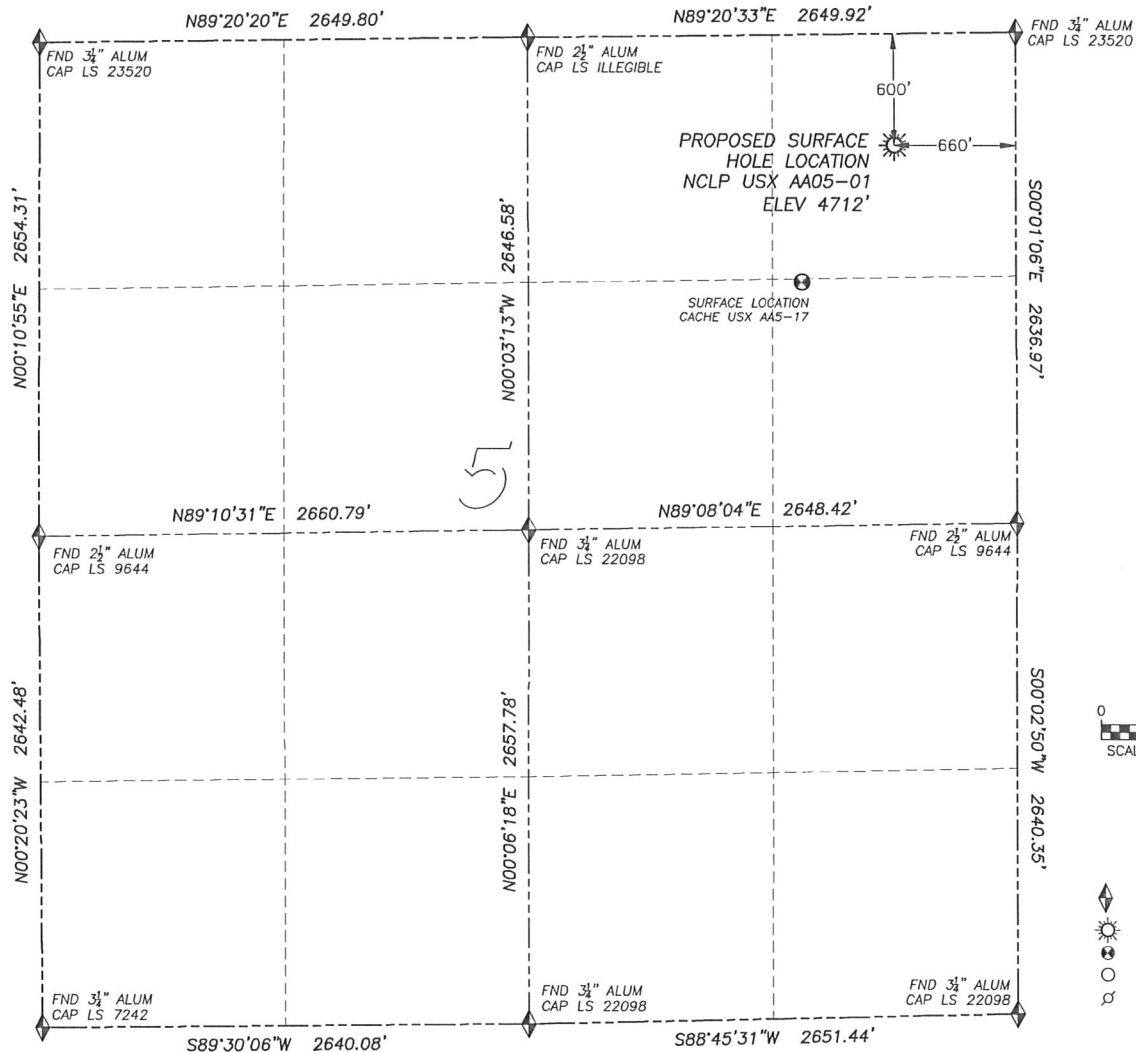
PARKER, CO. 80134

303 953 9841

WELL LOCATION CERTIFICATE

NCLP USX AA05-01

SECTION 5, TOWNSHIP 6 NORTH, RANGE 63 WEST OF THE 6TH PRINCIPAL MERIDIAN



LEGEND

- ◆ FOUND MONUMENT AS DESCRIBED
- ☀ PROPOSED WELL
- EXISTING WELL
- BOTTOM HOLE
- ⊗ ABANDONED WELL

NAD 83 LATITUDE AND LONGITUDE

NCLP USX AA05-01 SURFACE HOLE:

LATITUDE: N40.52134°
 LONGITUDE: W104.45359°
 ELEVATION: 4712'
 PDOP 2.1
 600' FNL, 660' FEL

NEAREST EXISTING WELL:

CACHE USX AA5-17 SURFACE HOLE
 LATITUDE: N40.51931°
 LONGITUDE: W104.45541°
 ELEVATION: 4721'
 894' SOUTHWEST

QUARTER/QUARTER: NE4/NE4

NEAREST APPARENT PROPERTY LINE:
 600'± NORTH

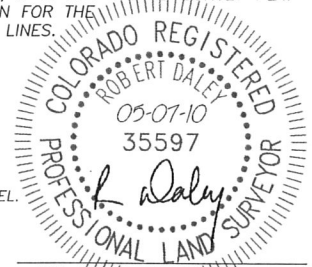
IN ACCORDANCE WITH A REQUEST FROM ROBBIE MILLER OF NOBLE ENERGY INC., DALEY LAND SURVEYING, INC. HAS DETERMINED THE SURFACE LOCATION OF THE NCLP USX AA05-01 WELL TO BE 600' FNL, 660' FEL, AS MEASURED AT NINETY (90) DEGREES FROM THE SECTION LINES OF SECTION 5, TOWNSHIP 6 NORTH, RANGE 63 WEST OF THE 6TH PRINCIPAL MERIDIAN, WELD COUNTY, COLORADO.

I HEREBY CERTIFY THAT THIS WELL LOCATION CERTIFICATE WAS PREPARED BY ME OR UNDER MY DIRECT SUPERVISION, THAT THE WORK WAS COMPLETED ON 5/5/2010 FOR AND ON BEHALF OF NOBLE ENERGY, INC., AND THAT THIS MAP DOES NOT REPRESENT A BOUNDARY SURVEY, IT IS NOT A LAND SURVEY PLAT OR AN IMPROVEMENT SURVEY PLAT AND IT IS NOT TO BE RELIED UPON FOR THE ESTABLISHMENT OF FENCE, BUILDING OR OTHER FUTURE IMPROVEMENT LINES.

NOTES:

- 1) BEARINGS FOR THIS MAP ARE ASSUMED AND BASED UPON GPS OBSERVATIONS MADE BETWEEN MONUMENTS LOCATED AT THE NORTHEAST CORNER AND EAST QUARTER CORNER OF SECTION 5, T.6N., R.63W.
- 2) HORIZONTAL DATUM IS NAD83.
- 3) VERTICAL DATUM IS NAVD88. ELEVATIONS ARE DERIVED FROM GPS OBSERVATIONS PROCESSED THROUGH OPUS, UTILIZING THE GEIOD03 MODEL.
- 4) SEE VISIBLE IMPROVEMENTS EXHIBIT FOR VISIBLE IMPROVEMENTS WITHIN 600' OF PROPOSED SURFACE HOLE LOCATION.
- 5) SURFACE USE: PASTURE.

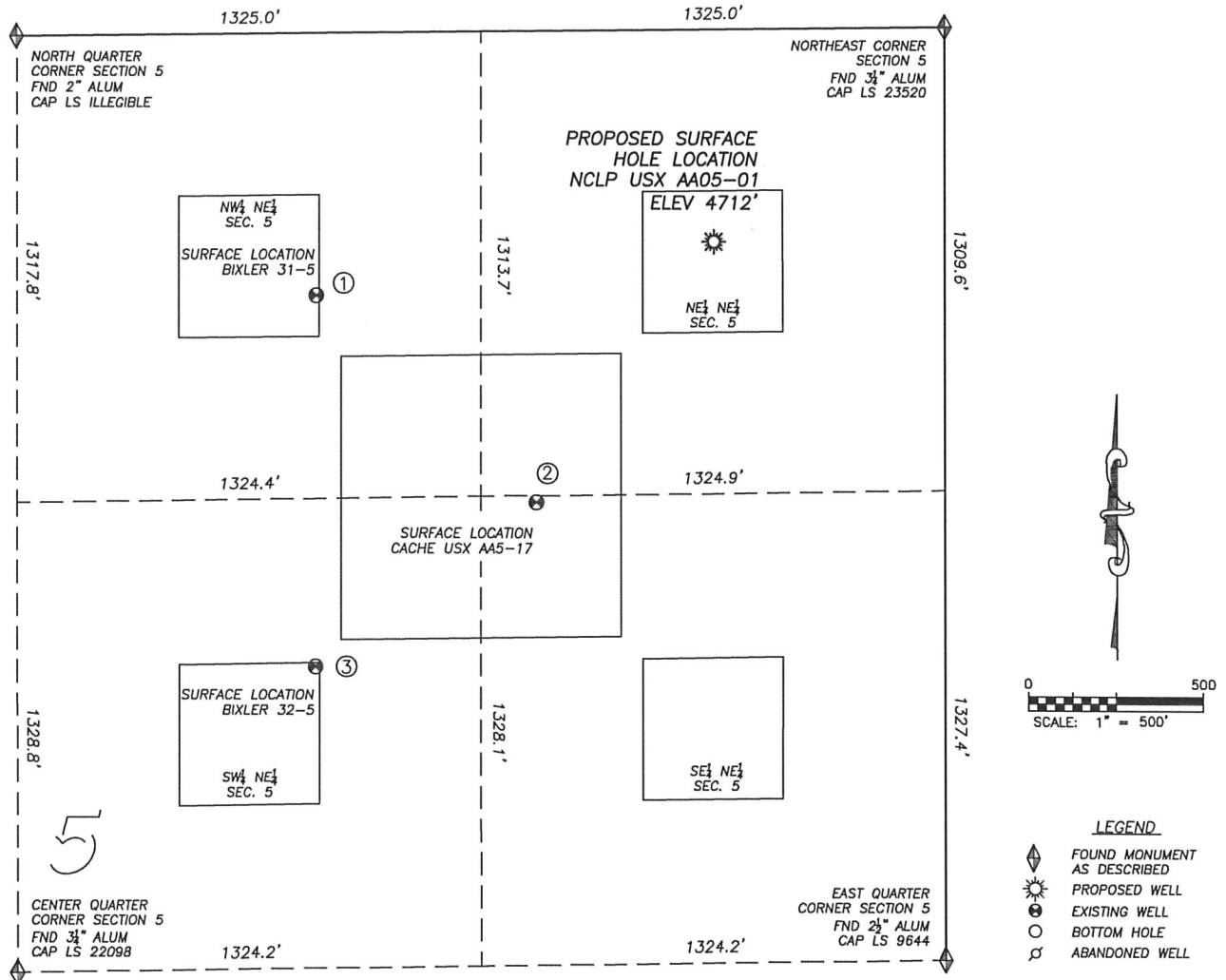
NOTICE: According to Colorado law you MUST commence any legal action based upon any defect in this W.L.C. within three years after you first discover such defect. In no event may any action based upon any such defect in this W.L.C. be commenced more than ten years from the date of the certification shown herein.



FOR AND ON BEHALF OF
 DALEY LAND SURVEYING INC.,
 Robert Daley, PLS 35597

SITE SKETCH NCLP USX AA05-01

SECTION 5, TOWNSHIP 6 NORTH, RANGE 63 WEST OF THE 6TH PRINCIPAL MERIDIAN



①

BIXLER 31-5

NW/NE SEC. 5
742' FNL, 1796' FEL
1147' W OF PROPOSED
SURFACE HOLE LOCATION
LAT. N40.52091°
LONG. W104.45767°
EL: 4722'
PDOP 1.6

②

CACHE USX AA5-17

SE/NE SEC. 5
1332' FNL, 1166' FEL
894' SW OF PROPOSED
SURFACE HOLE LOCATION
LAT. N40.51931°
LONG. W104.45541°
EL: 4721'
PDOP 1.7

③

BIXLER 32-5

SW/NE SEC. 5
1791' FNL, 1798' FEL
1657' SW OF PROPOSED
SURFACE HOLE LOCATION
LAT. N40.51803°
LONG. W104.45768°
EL: 4716'
PDOP 2.0

NOTES:

- 1) THIS DOES NOT REPRESENT A BOUNDARY SURVEY
- 2) THE LATITUDES AND LONGITUDES SHOWN ARE REFERENCED TO NAD83
- 3) DATUM FOR ELEVATION IS NAVD88. ELEVATIONS ARE DERIVED FROM GPS-RTK OBSERVATIONS PROCESSED THROUGH OPUS, UTILIZING THE GEOID03 MODEL.