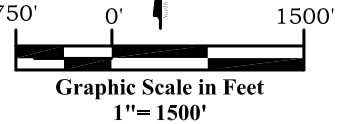


Well Location Plat CSF 31C-15-07-91

Section 10, Township 7 South, Range 91 West

Legend

- ◆ - Field Surveyed Section Corner
- ◆ - Field Surveyed Quarter Corner
- ⊙ - Calculated Section Corner Location
- ⊕ - Field Surveyed 1/6 Corner



Surface: CSF 31C

664' FSL

1606' FEL

Gnd El= 7285

Pad El= 7286

NAD83

Lat: 39.456272459°N

Long: 107.535978524°W

NAD27

Lat: 39.456291741°N

Long: 107.535368333°W

UTM 13 NORTH

NAD 1983

NORTHING

14338820.769

EASTING

924567.218

Bottom Hole: CSF 31C

842' FNL

2004' FEL

NAD83

Lat: 39.452133921°N

Long: 107.537368049°W

NAD27

Lat: 39.452153202°N

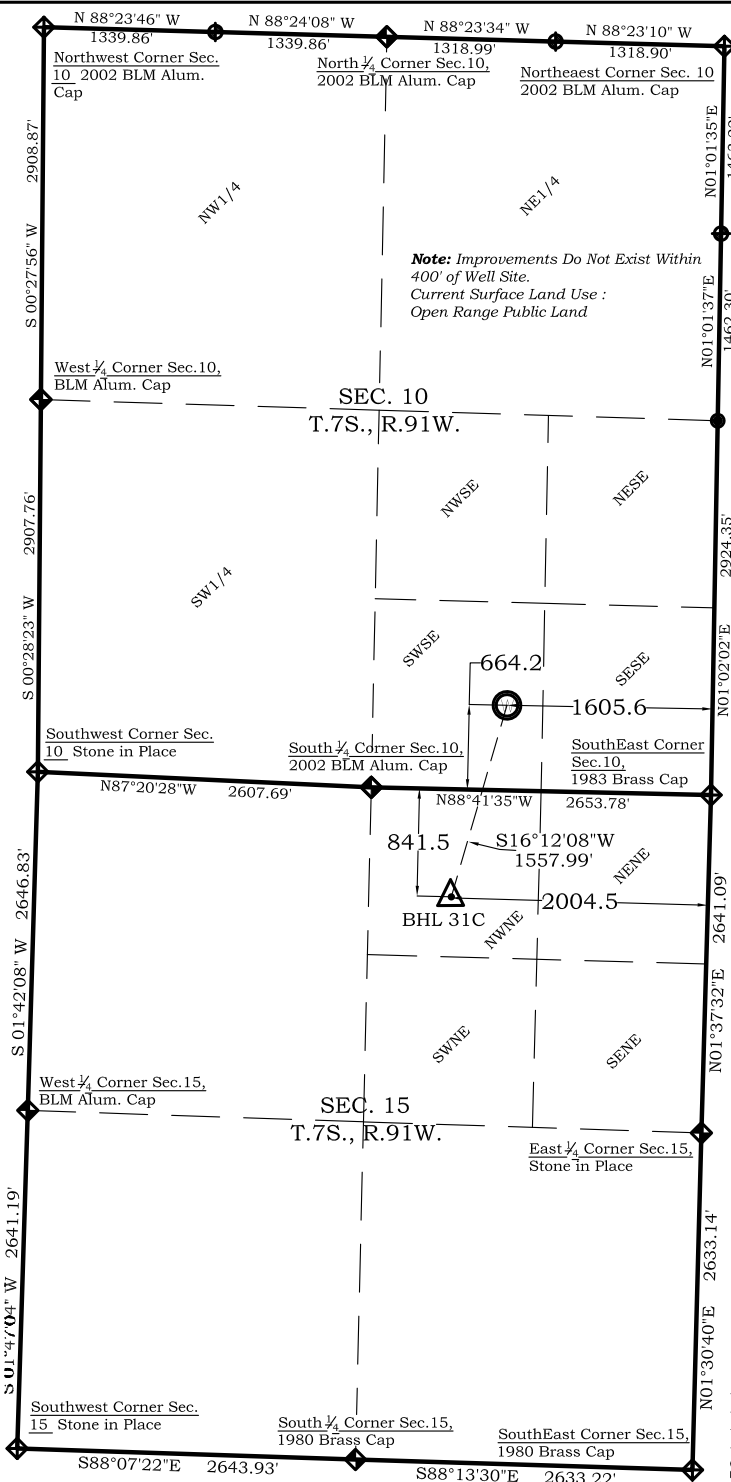
Long: 107.536757801°W

Prepared For Antero Resources

Proposed CSF 31C-15-07-91 Well Situate in The SW 1/4 SE 1/4
Section 10, Township 7 South, Range 91 West of the 6 th.
Principal Meridian, County of Garfield, State of Colorado

Notes:

1. LATITUDE AND LONGITUDE COORDINATES ARE DIFFERENTIALLY CORRECTED AND BASED ON PUBLISHED NGS CONTROL STATION "WDP-5". SYSTEM: UTM ZONE: 13 NORTH DATUM: NAD 1983 (CONUS)
2. ELEVATIONS ARE BASED ON NAVD OF 1983.
3. ALL BOTTOM AND TOP HOLE LOCATIONS ARE MEASURED 90 DEGREES FROM SECTION LINE.
4. USGS QUADRANGLE MAP "GIBSON GULCH".
5. CURRENT SURFACE LAND USE: OPEN RANGE LAND.
6. PDOP AT THE TIME OF LOCATION OF SURFACE WELL = 2.5



SURVEYOR'S CERTIFICATE

I, SCOTT E. AIBNER, A REGISTERED LAND SURVEYOR, LICENSED UNDER THE LAWS OF THE STATE OF COLORADO DO HEREBY CERTIFY THAT THE SURVEY SHOWN HEREON WAS PREPARED BY RIVER VALLEY SURVEY, INC., FOR ANTERO RESOURCES, BY ME OR UNDER MY DIRECT SUPERVISION AND THAT THIS PLAT IS A TRUE REPRESENTATION THEREOF.

BY: 
SCOTT E. AIBNER, COLORADO REG. NO. 31143



River Valley Survey, Inc.
110 East 3rd. Street, Suite 213
Rifle, Colorado 81650
Ph: 970-379-7846

Project: CASTLE SPRINGS FEDERAL Q PAD

Field Date: 06-09-10

Date: 06-16-2010

Scale: 1"= 1000'

Sheet: 1 of 13

Well Location Plat
Prepared For Antero Resources

Situate In:
SE 1/4 Section 10, T7S., R. 91 W. of the
6th P.M., Garfield County, Colorado

