

DALEY LAND SURVEYING, INC.

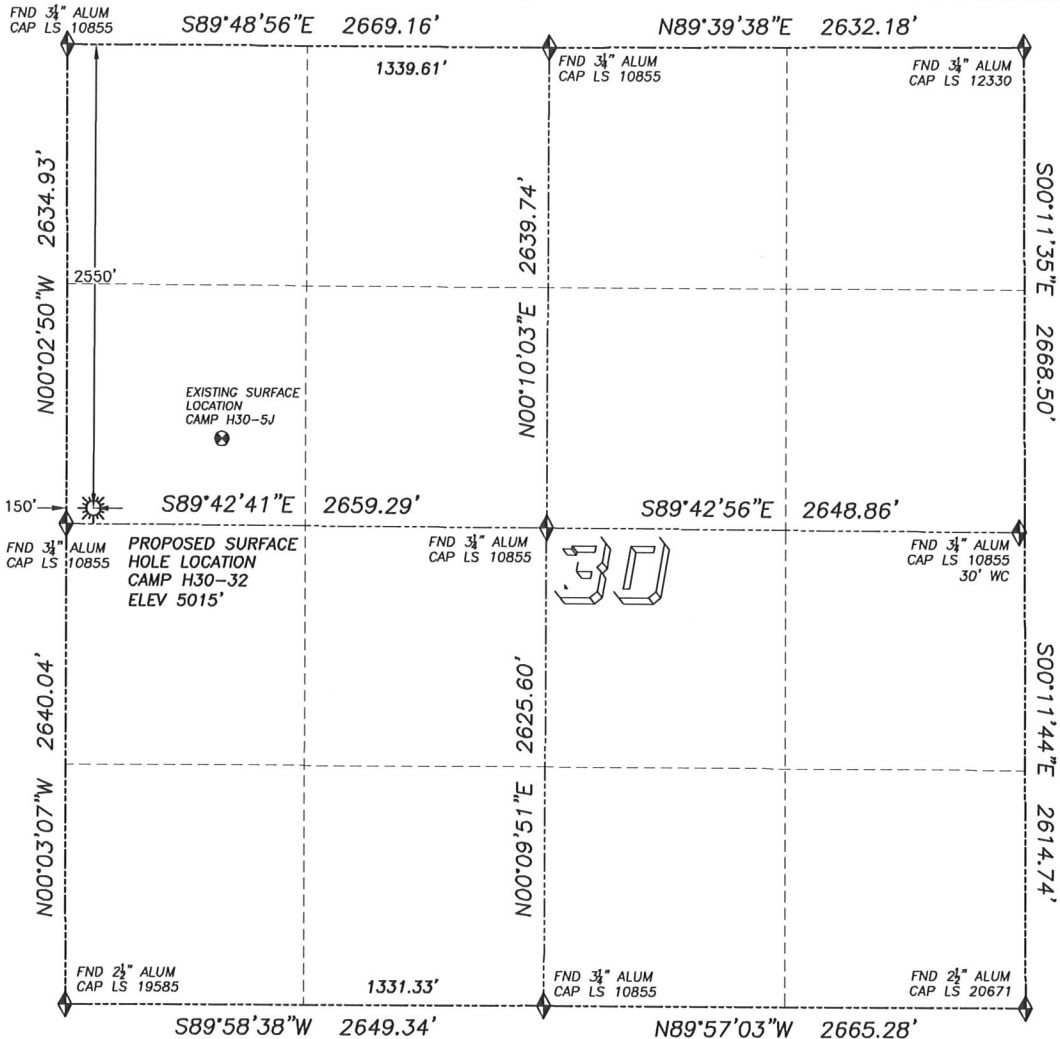
PARKER, CO. 80134

303 953 9841

WELL LOCATION CERTIFICATE

CAMP H30-32

SECTION 30, TOWNSHIP 3 NORTH, RANGE 65 WEST OF THE 6TH PRINCIPAL MERIDIAN

**LEGEND**

- ◆ FOUND MONUMENT AS DESCRIBED
- ☼ PROPOSED WELL
- ⊙ EXISTING WELL
- BOTTOM HOLE
- ⌵ ABANDONED WELL

NAD 83 LATITUDE AND LONGITUDE**CAMP H30-32 SURFACE HOLE:**

LATITUDE: N40.19667°
 LONGITUDE: W104.71521°
 ELEVATION: 5015'
 PDOP 1.6
 2550' FNL, 150' FWL

NEAREST EXISTING WELL:

CAMP H30-5J SURFACE HOLE
 LATITUDE: N40.19773°
 LONGITUDE: W104.71267°
 ELEVATION: 5009'
 808' NORTHEAST

QUARTER/QUARTER: SW4/NW4, GOV'T LOT 2

NEAREST APPARENT PROPERTY LINE:
 150'± WEST

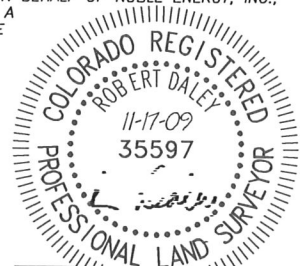
IN ACCORDANCE WITH A REQUEST FROM JOE JOHNSON OF NOBLE ENERGY INC., DALEY LAND SURVEYING, INC. HAS DETERMINED THE SURFACE LOCATION OF THE CAMP H30-32 WELL TO BE 2550' FNL, 150' FWL, AS MEASURED AT NINETY (90) DEGREES FROM THE SECTION LINES OF SECTION 30, TOWNSHIP 3 NORTH, RANGE 65 WEST OF THE 6TH PRINCIPAL MERIDIAN, WELD COUNTY COLORADO.

I HEREBY CERTIFY THAT THIS WELL LOCATION CERTIFICATE WAS PREPARED BY ME OR UNDER MY DIRECT SUPERVISION, THAT THE WORK WAS COMPLETED ON 11/16/2009 FOR AND ON BEHALF OF NOBLE ENERGY, INC., AND THAT THIS MAP DOES NOT REPRESENT A BOUNDARY SURVEY, IT IS NOT A LAND SURVEY PLAT OR AN IMPROVEMENT SURVEY PLAT AND IT IS NOT TO BE RELIED UPON FOR THE ESTABLISHMENT OF FENCE, BUILDING OR OTHER FUTURE IMPROVEMENT LINES.

NOTES:

- 1) BASIS OF BEARING FOR THIS MAP IS ASSUMED AND BASED UPON GPS OBSERVATIONS MADE BETWEEN MONUMENTS LOCATED AT THE SOUTHWEST AND WEST QUARTER CORNERS OF SECTION 30, T.3N., R.65W., AND ALL BEARINGS SHOWN HEREON ARE RELATIVE THERETO.
- 2) HORIZONTAL DATUM IS NAD83.
- 3) VERTICAL DATUM IS NAVD88. ELEVATIONS ARE DERIVED FROM GPS-RTK OBSERVATIONS PROCESSED THROUGH OPUS, UTILIZING THE GEOID03 MODEL.
- 4) SEE VISIBLE IMPROVEMENTS EXHIBIT FOR VISIBLE IMPROVEMENTS WITHIN 400' OF PROPOSED SURFACE HOLE LOCATION
- 5) SURFACE USE: OPEN FIELD

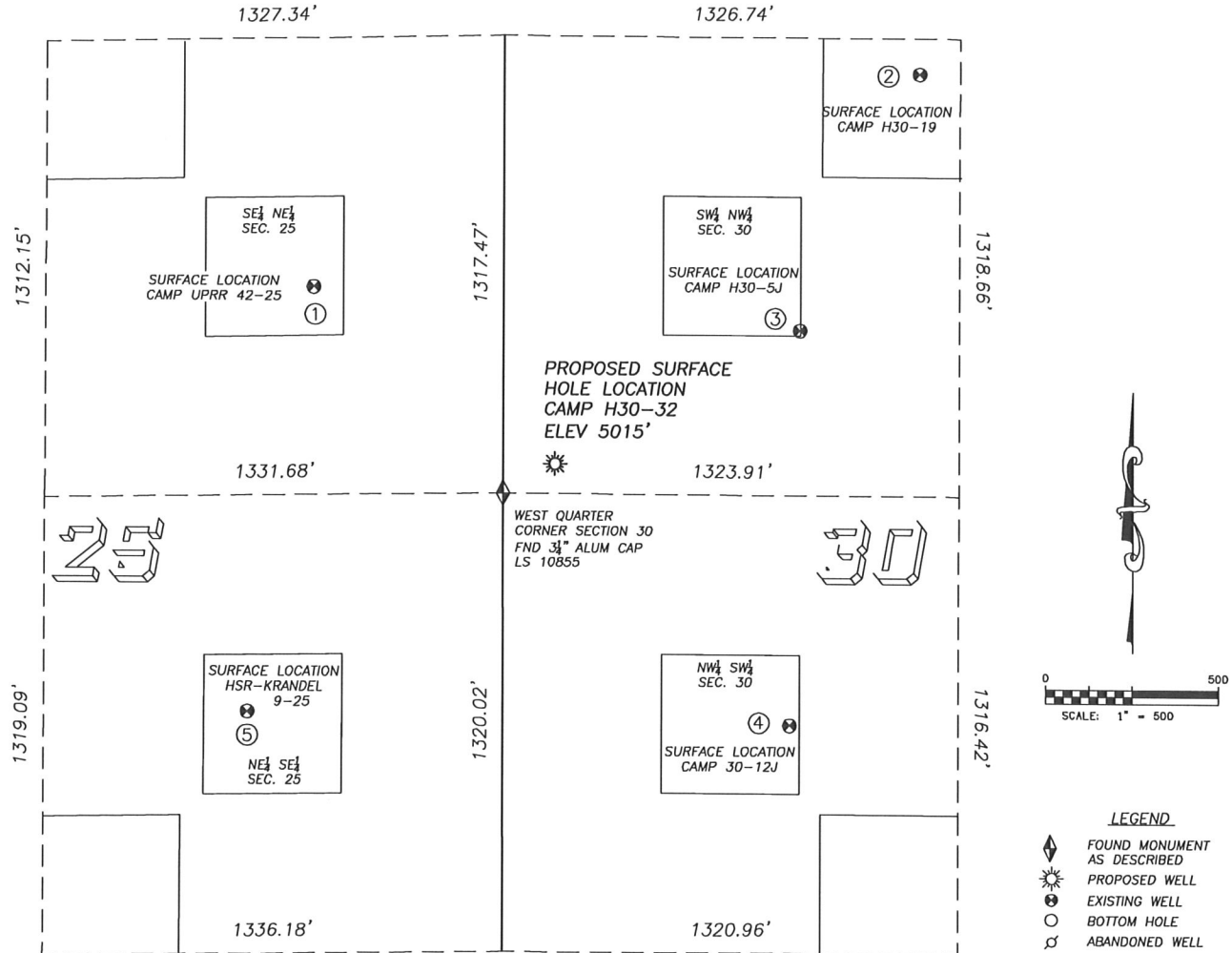
NOTICE: According to Colorado law you MUST commence any legal action based upon any defect in this W.L.C. within three years after you first discover such defect. In no event may any action based upon any such defect in this W.L.C. be commenced more than ten years from the date of the certification shown hereon.



FOR AND ON BEHALF OF
 DALEY LAND SURVEYING INC.,
 Robert Daley, PLS 35597

SITE SKETCH CAMP H30-32

SECTION 30, TOWNSHIP 3 NORTH, RANGE 65 WEST OF THE 6TH PRINCIPAL MERIDIAN



①
CAMP UPRR 42-25
SE/NE SEC. 25
2032' FNL, 551' FEL
865' NW OF PROPOSED
SURFACE HOLE LOCATION
LAT. N40.19806'
LONG. W104.71772'
EL: 5033'
PDOP 1.8

②
CAMP H30-19
SW/NW SEC. 30
GOV'T LOT 2
1421' FNL, 1209' FWL
1544' NE OF PROPOSED
SURFACE HOLE LOCATION
LAT. N40.19976'
LONG. W104.71143'
EL: 5003'
PDOP 1.4

③
CAMP H30-5J
SW/NW SEC. 30
GOV'T LOT 2
2162' FNL, 861' FWL
808' NE OF PROPOSED
SURFACE HOLE LOCATION
LAT. N40.19773'
LONG. W104.71267'
EL: 5009'
PDOP 2.4

④
CAMP 30-12J
NW/SW SEC. 30
GOV'T LOT 3
1973' FSL, 833' FWL
1015' SE OF PROPOSED
SURFACE HOLE LOCATION
LAT. N40.19461'
LONG. W104.71276'
EL: 4988'
PDOP 1.3

⑤
HSR-KRANDEL 9-25
NE/SE SEC. 25
2016' FSL, 741' FEL
1143' SW OF PROPOSED
SURFACE HOLE LOCATION
LAT. N40.19470'
LONG. W104.71840'
EL: 4992'
PDOP 2.2

NOTES:

- 1) THIS DOES NOT REPRESENT A BOUNDARY SURVEY
- 2) THE LATITUDES AND LONGITUDES SHOWN ARE REFERENCED TO NAD83
- 3) DATUM FOR ELEVATION IS NAVD88. ELEVATIONS ARE DERIVED FROM GPS-RTK OBSERVATIONS PROCESSED THROUGH OPUS, UTILIZING THE GEOID03 MODEL.