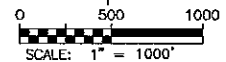
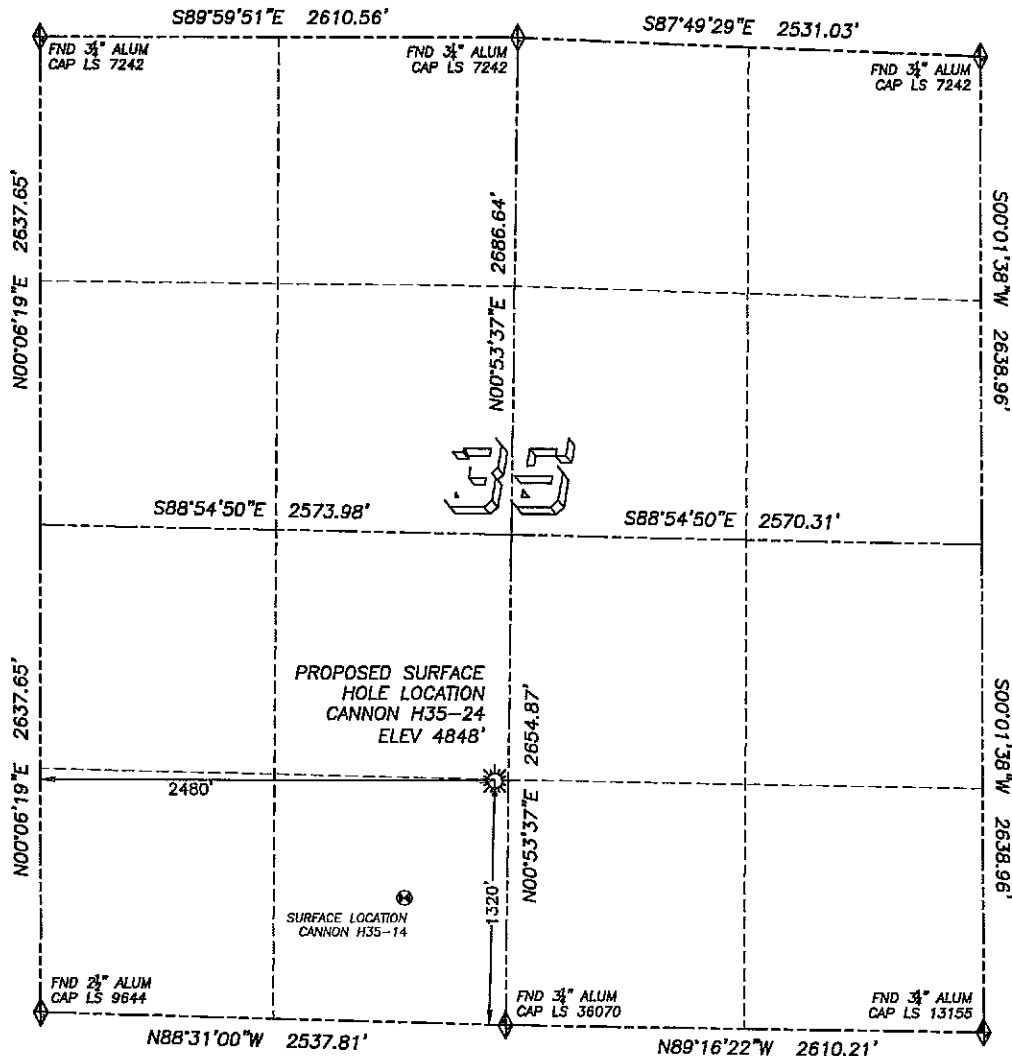


WELL LOCATION CERTIFICATE

CANNON H35-24

SECTION 35, TOWNSHIP 3 NORTH, RANGE 65 WEST OF THE 6TH PRINCIPAL MERIDIAN

**LEGEND**

- ◆ FOUND MONUMENT AS DESCRIBED
- ⊙ PROPOSED WELL
- ⊙ EXISTING WELL
- BOTTOM HOLE
- ⊘ ABANDONED WELL

NAD 83 LATITUDE AND LONGITUDE**CANNON H35-24 SURFACE HOLE:**

LATITUDE: N40.17801°
 LONGITUDE: W104.63131°
 ELEVATION: 4848'
 PDOP: 2.1
 1320' FSL, 2480' FWL

NEAREST EXISTING WELL:

CANNON H35-14 SURFACE HOLE
 LATITUDE: N40.17627°
 LONGITUDE: W104.63308°
 ELEVATION: 4854'
 805' SOUTHWEST

QUARTER/QUARTER: SE4/SW4

NEAREST APPARENT PROPERTY LINE:
 1320'± SOUTH

IN ACCORDANCE WITH A REQUEST FROM JOE JOHNSON OF NOBLE ENERGY INC., DALEY LAND SURVEYING, INC. HAS DETERMINED THE SURFACE LOCATION OF THE CANNON H35-24 WELL TO BE 1320' FSL, 2480' FWL, AS MEASURED AT NINETY (90) DEGREES FROM THE SECTION LINES OF SECTION 35, TOWNSHIP 3 NORTH, RANGE 65 WEST OF THE 6TH PRINCIPAL MERIDIAN, WELD COUNTY, COLORADO.

I HEREBY CERTIFY THAT THIS WELL LOCATION CERTIFICATE WAS PREPARED BY ME OR UNDER MY DIRECT SUPERVISION, THAT THE WORK WAS COMPLETED ON 4/12/2010 FOR AND ON BEHALF OF NOBLE ENERGY, INC., AND THAT THIS MAP DOES NOT REPRESENT A BOUNDARY SURVEY, IT IS NOT A LAND SURVEY PLAT OR AN IMPROVEMENT SURVEY PLAT AND IT IS NOT TO BE RELIED UPON FOR THE ESTABLISHMENT OF FENCE, BUILDING OR OTHER FUTURE IMPROVEMENT LINES.

NOTES:

- 1) BEARINGS FOR THIS MAP ARE ASSUMED AND BASED UPON GPS OBSERVATIONS MADE BETWEEN MONUMENTS LOCATED AT THE SOUTHWEST AND SOUTH QUARTER CORNER OF SECTION 35, T.3N., R.65W.
- 2) HORIZONTAL DATUM IS NAD83.
- 3) VERTICAL DATUM IS NAVD88. ELEVATIONS ARE DERIVED FROM GPS OBSERVATIONS PROCESSED THROUGH OPUS, UTILIZING THE GEOID03 MODEL.
- 4) SEE VISIBLE IMPROVEMENTS EXHIBIT FOR VISIBLE IMPROVEMENTS WITHIN 600' OF PROPOSED SURFACE HOLE LOCATION.
- 5) SURFACE USE: OPEN RANGE LAND.

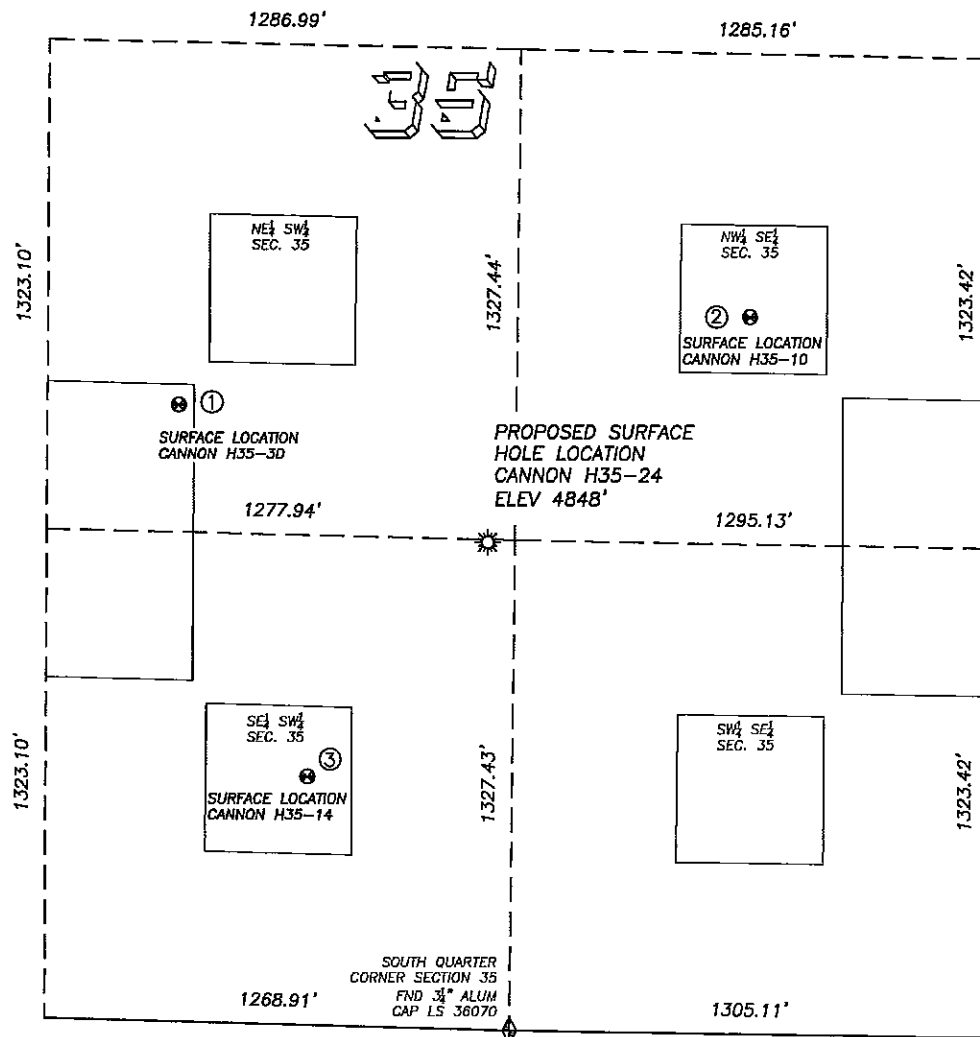
NOTICE: According to Colorado law you MUST commence any legal action based upon any defect in this W.L.C. within three years after you first discover such defect. In no event may any action based upon any such defect in this W.L.C. be commenced more than ten years from the date of the certification shown herein.



FOR AND ON BEHALF OF
 DALEY LAND SURVEYING INC.,
 Robert Daley, PLS 35597

SITE SKETCH CANNON H35-24

SECTION 35, TOWNSHIP 3 NORTH, RANGE 65 WEST OF THE 6TH PRINCIPAL MERIDIAN



①

CANNON H35-3D

NE/SW SEC. 35
1668' FSL, 1638' FWL
919' NW OF PROPOSED
SURFACE HOLE LOCATION
LAT. N40.17903'
LONG. W104.63432'
EL: 4848'
PDOP 1.6

②

CANNON H35-10

NW/SE SEC. 35
1940' FSL, 1946' FEL
943' NE OF PROPOSED
SURFACE HOLE LOCATION
LAT. N40.17969'
LONG. W104.62874'
EL: 4846'
PDOP 2.0

③

CANNON H35-14

SE/SW SEC. 35
672' FSL, 1987' FWL
805' SW OF PROPOSED
SURFACE HOLE LOCATION
LAT. N40.17627'
LONG. W104.66308'
EL: 4854'
PDOP 2.6

NOTES:

- 1) THIS DOES NOT REPRESENT A BOUNDARY SURVEY
- 2) THE LATITUDES AND LONGITUDES SHOWN ARE REFERENCED TO NAD83
- 3) DATUM FOR ELEVATION IS NAVD88. ELEVATIONS ARE DERIVED FROM GPS-RTK OBSERVATIONS PROCESSED THROUGH OPUS, UTILIZING THE GEOID03 MODEL.