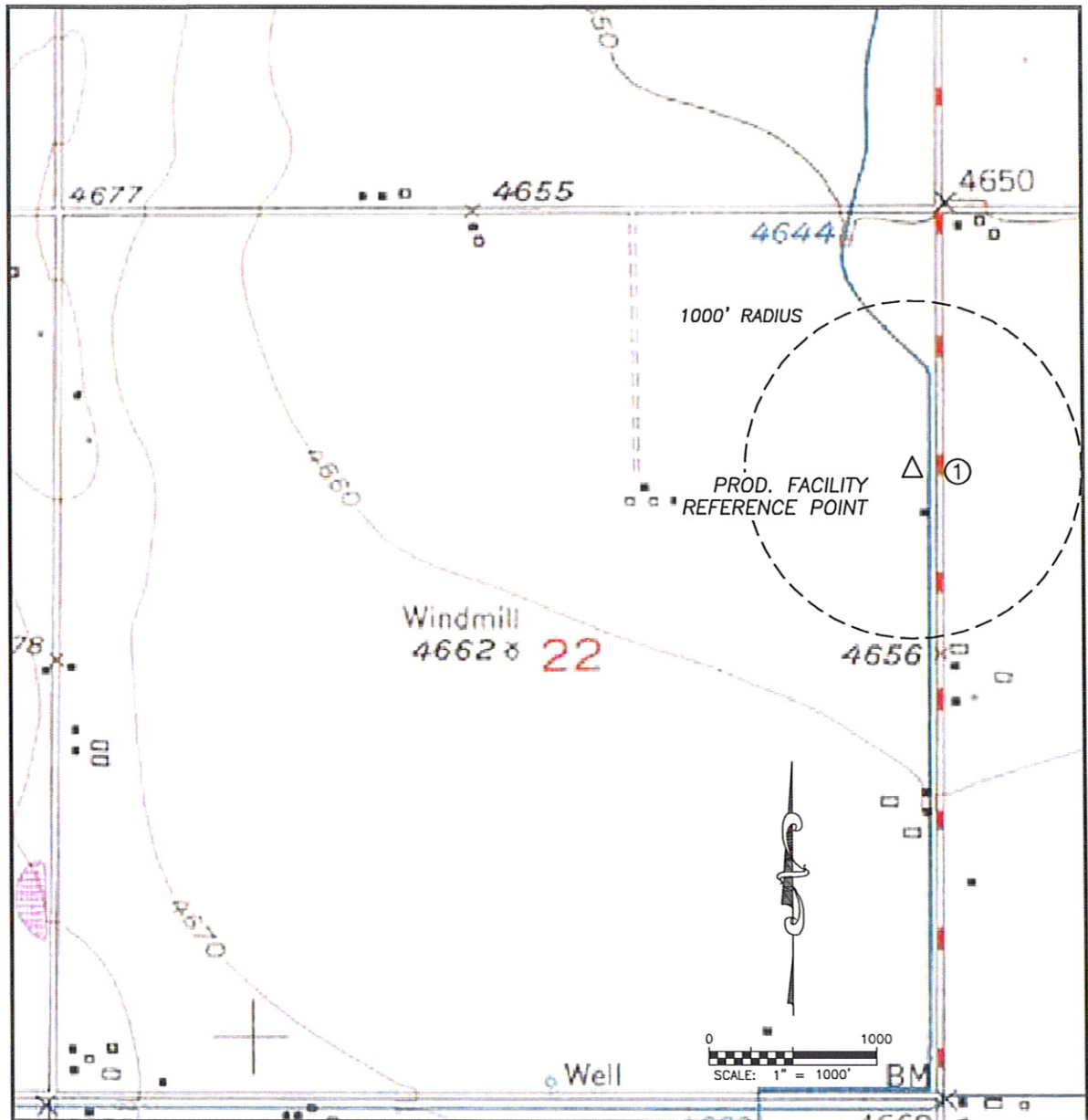


DALEY LAND SURVEYING, INC. PARKER, CO. 80134 303 953 9841

# PRODUCTION FACILITY HYDROLOGY MAP COLEMAN C22-17 & HERBST C22-22D

SECTION 22, TOWNSHIP 4 NORTH, RANGE 64 WEST OF THE 6TH PRINCIPAL MERIDIAN



①

CENTERLINE CREEK  
125'± E

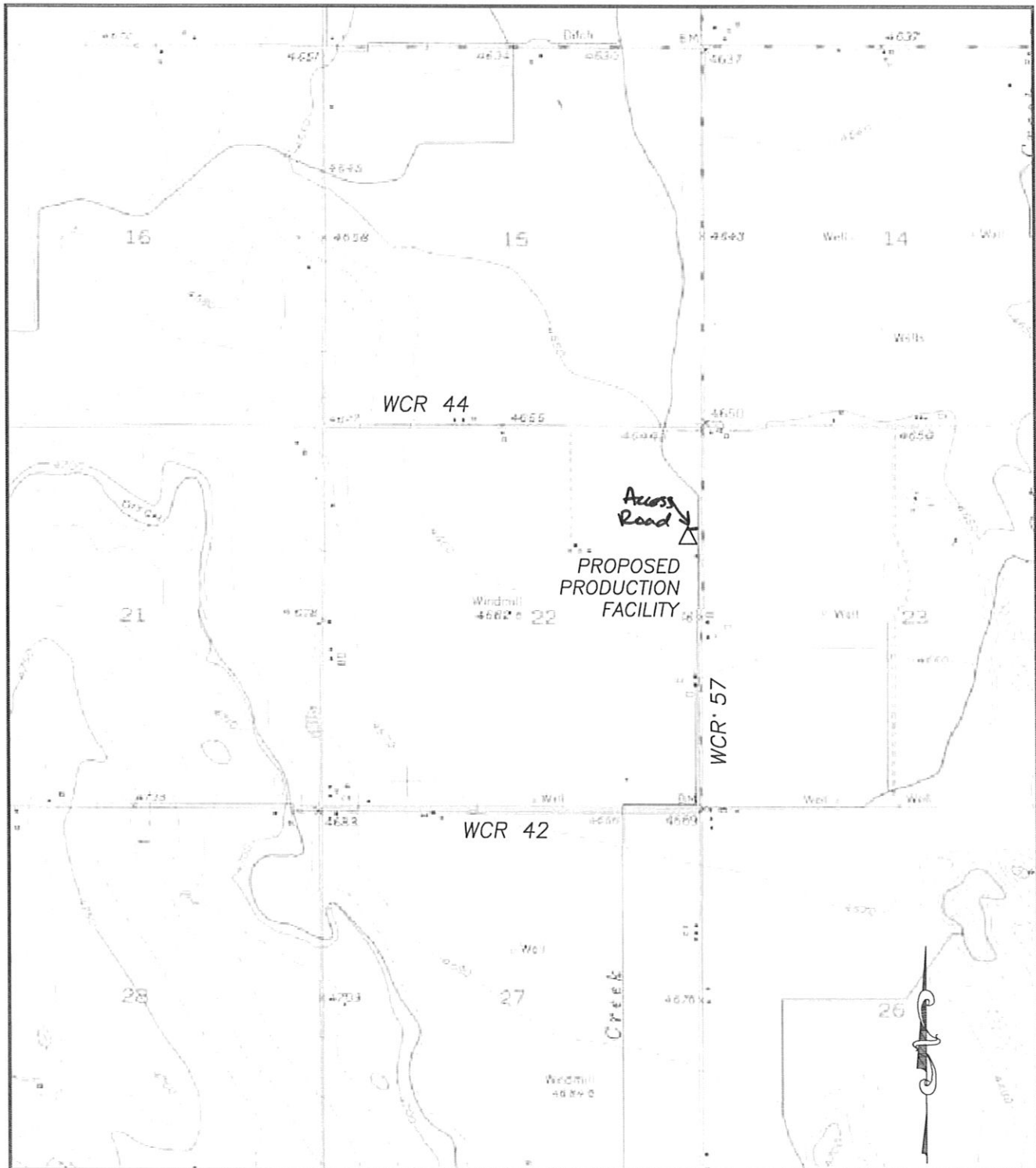
DALEY LAND SURVEYING, INC.

PARKER, CO. 80134

303 953 9841

# PRODUCTION FACILITY ACCESS ROAD MAP COLEMAN C22-17 & HERBST C22-22D

SECTION 22, TOWNSHIP 4 NORTH, RANGE 64 WEST OF THE 6TH PRINCIPAL MERIDIAN



## Map Unit Description

Weld County, Colorado, Southern Part

COLEMAN C22-17

HERBST C22-22D

PRODUCTION FACILITY

TOWNSHIP 4 NORTH - RANGE 64 WEST

SECTION 22: SE 4 / NE 4

41 Nunn clay loam, 0 to 1 percent slopes

### Setting

Elevation: 4550 to 5150 feet  
Mean annual precipitation: 12 to 18 inches  
Mean annual air temperature: 46 to 54 degrees F  
Frost-free period: 115 to 180 days

### Composition

Nunn and similar soils: 85 percent  
Minor components: 15 percent

### Description of Nunn

#### Setting

Landform: Plains, terraces  
Down-slope shape: Linear  
Across-slope shape: Linear  
Parent material: Mixed alluvium and/or eolian deposits

#### Properties and Qualities

Slope: 0 to 1 percent  
Drainage class: Well drained  
Capacity of the most limiting layer to transmit water (Ksat): Moderately low or moderately high (0.06 to 0.20 in/hr)  
Frequency of flooding: None  
Frequency of ponding: None  
Calcium carbonate maximum: 15 percent  
Gypsum maximum: 0 percent  
Available water capacity: High (about 9.1 inches)

#### Interpretive Groups

Land capability classification (irrigated): 2e  
Ecological site: Clayey Plains (R067BY042CO)

#### Typical Profile

0 to 9 inches: clay loam  
9 to 29 inches: clay loam  
29 to 60 inches: sandy loam

### Minor Components

#### Heldt

Percent of map unit: 7 percent

#### Dacono

Percent of map unit: 4 percent

#### Altvan

Percent of map unit: 4 percent