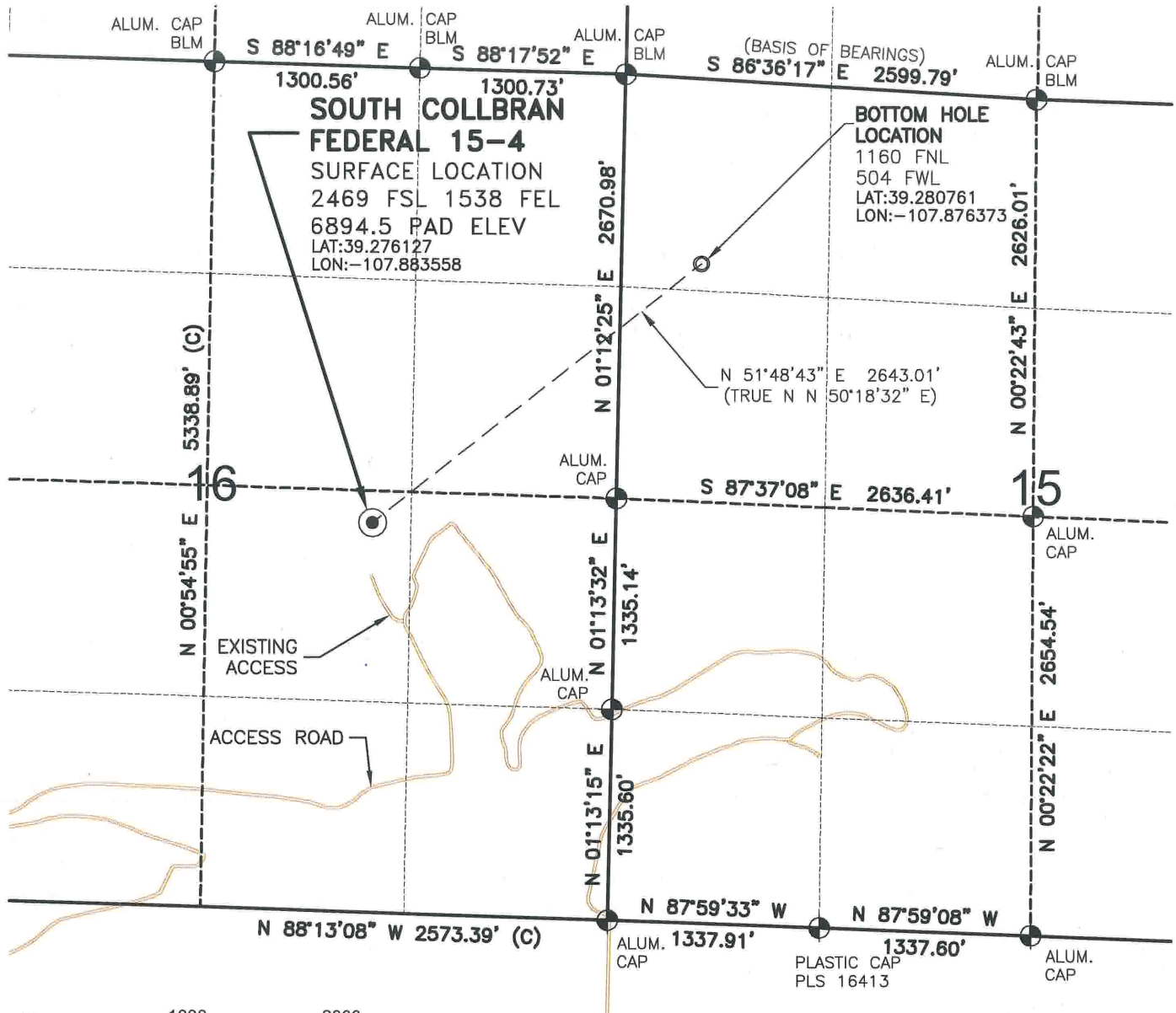


WELL LOCATION MAP

CURREY
16-10 PAD



SURVEYOR'S STATEMENT

The undersigned hereby states that the well location shown hereon was staked on the ground based on existing monumentation and/or physical evidence found in the field and is correct to the best of my knowledge, information and belief.



NOTES

- 1.) Horizontal and vertical datum based on Mesa County control point "SN23" with an elevation of 8008.15. NAVD 1988.
 - 2.) All directions, distances, and dimensions shown hereon are based on coordinates from the "Colorado coordinate system of 1983 central zone" (article 52 of title 38, C.R.S.).
 - 3.) All section line dimensions shown hereon are based on field measurements of existing monuments and/or physical evidence found in the field unless otherwise indicated.
 - 4.) Physical features shown hereon are for graphical representation only.
 - 5.) See Form 2A for visible improvements within 400' of wellhead.
 - 6.) Distances to nearest section lines are measured perpendicularly.
 - 7.) This is not a land survey nor land survey plat.
 - 8.) Date of Survey 6/20/07; Date of Drawing 6/1/10. REV 1
- PDOP Reading: 2.2 Instrument Operator: EJJ

GEO SURV
LAND SURVEYING AND MAPPING
520 STACY COURT SUITE "B"
LAFAYETTE, CO. 80026
Ph 303 666 0379 Fx 303 665 6320

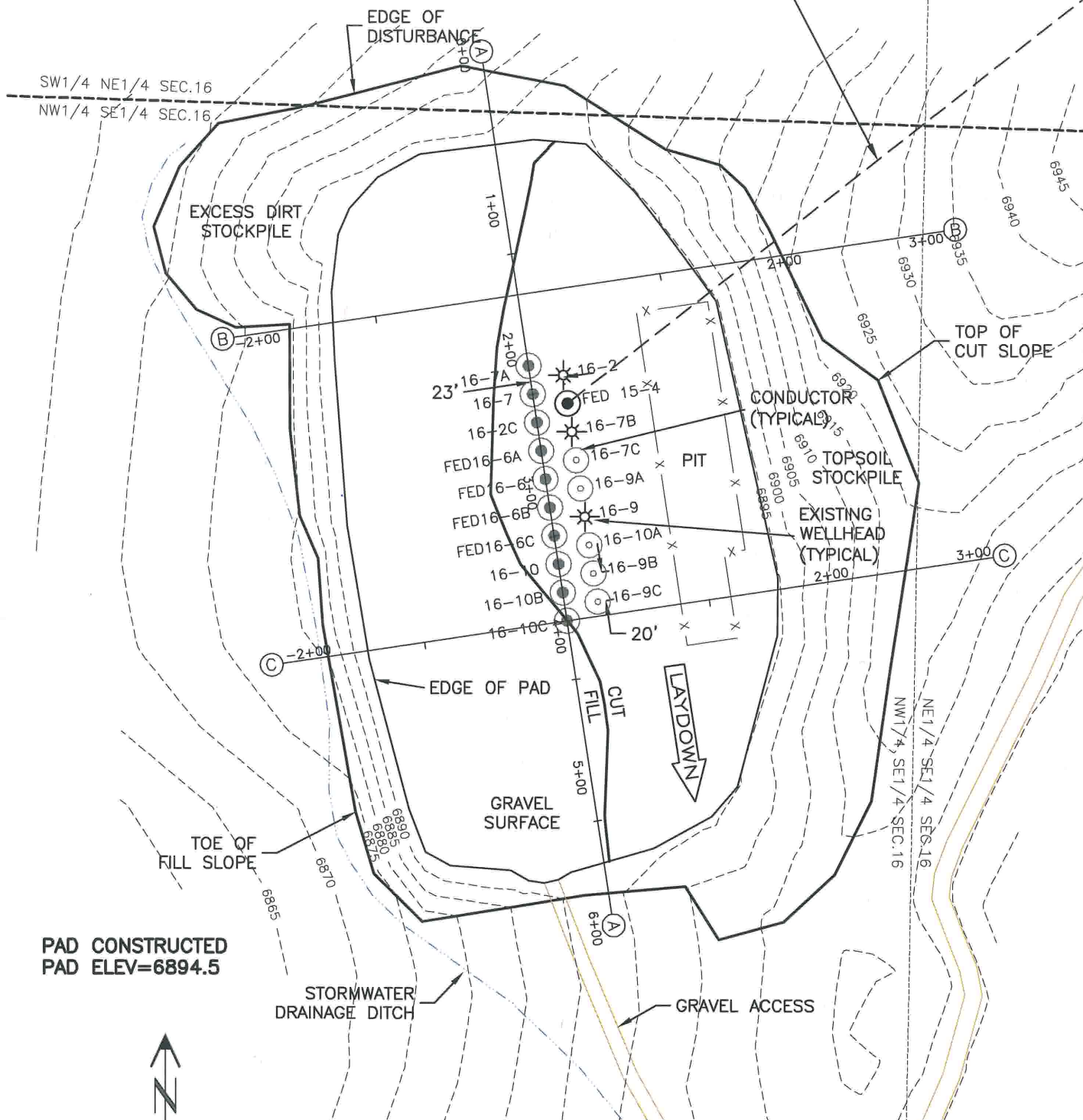
OXY USA, INC
SOUTH COLLBRAN FEDERAL 15-4

SL NW1/4 SE1/4 SEC. 16 T9S R94W
BH NW1/4 NW1/4 SEC. 15 T9S R94W
6th PM MESA COUNTY COLORADO

PAD LAYOUT

CURREY
16-10 PAD

PROPOSED DIRECTIONAL ALIGNMENT
SOUTH COLLBRAN FEDERAL 15-4
N 51°48'43" E 2643.01'

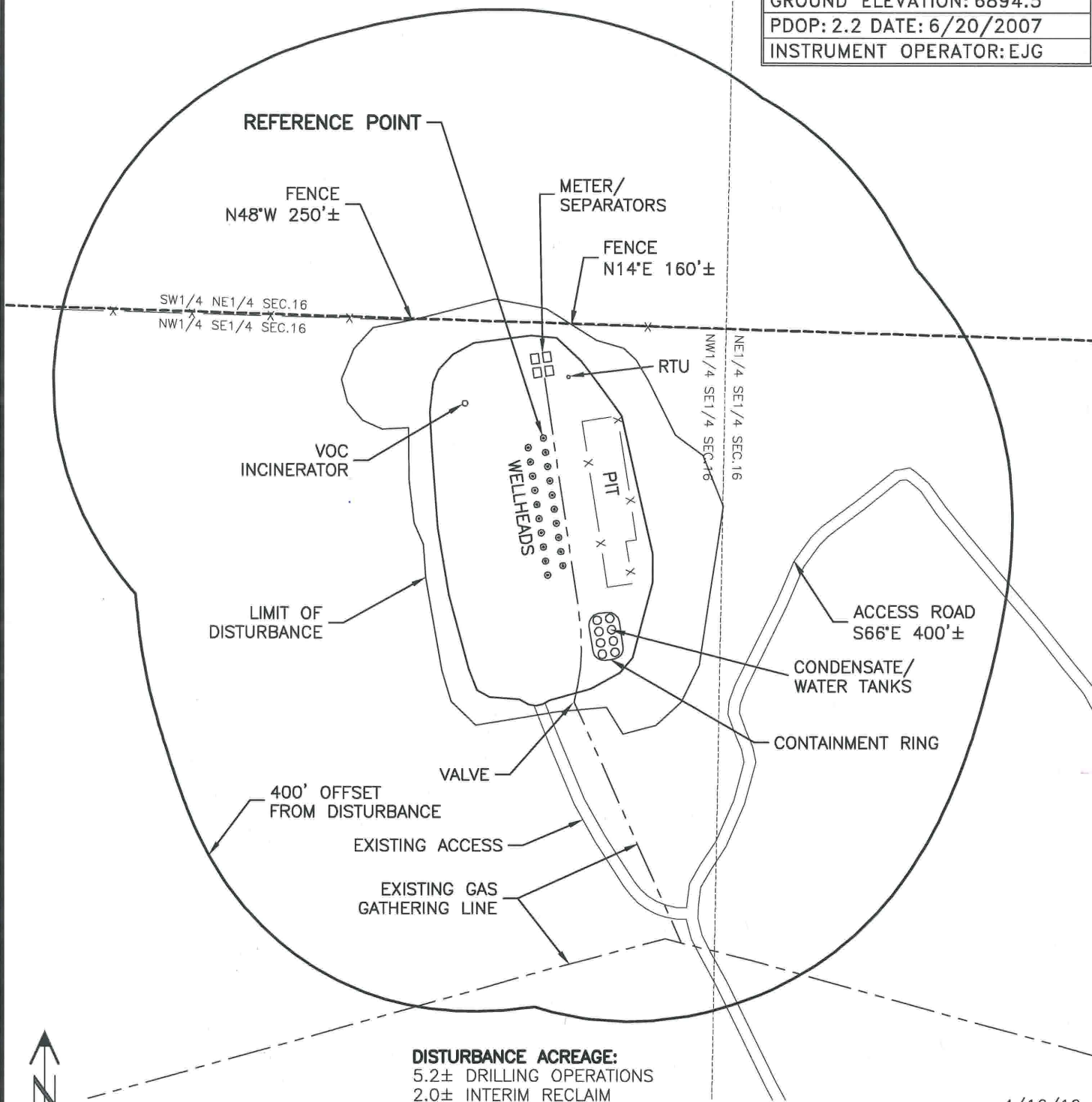


LOCATION DRAWING

PAD CONSTRUCTED
PAD ELEV=6894.5

REFERENCE POINT

LATITUDE: 39.276235
LONGITUDE: -107.883582
FOOTAGE: 2508 FSL 1545 FEL
GROUND ELEVATION: 6894.5
PDOP: 2.2 DATE: 6/20/2007
INSTRUMENT OPERATOR: EJG



DISTURBANCE ACREAGE:
5.2± DRILLING OPERATIONS
2.0± INTERIM RECLAIM

4/16/10



0 200 400
Graphic Scale in Feet
1 Inch = 200 feet



GEO SURV

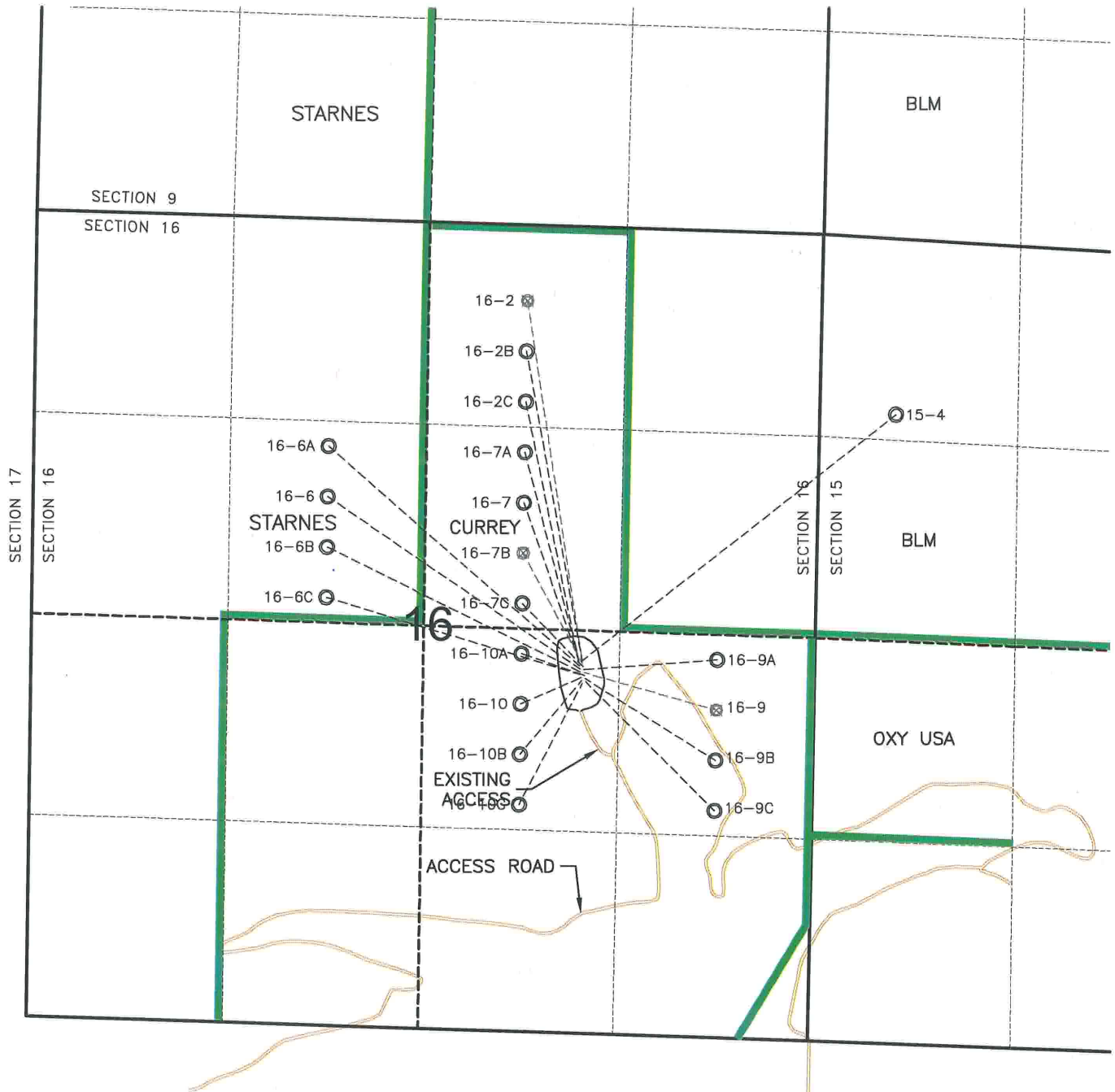
LAND SURVEYING AND MAPPING
LAFAYETTE - WINTER PARK
Ph 303 666 0379 Fx 303 665 6320

OXY USA, INC
CURREY 16-10 PAD

NW1/4 SE1/4 SEC. 16 T9S R94W
6th PM MESA COUNTY COLORADO

BOTTOM HOLE SCHEMATIC

CURREY
16-10 PAD



GRID

0 1000 2000

Graphic Scale in Feet
1" = 1000'

PROPERTY LINE

- ⊗ PRODUCING BOTTOM HOLE
- PROPOSED BOTTOM HOLE

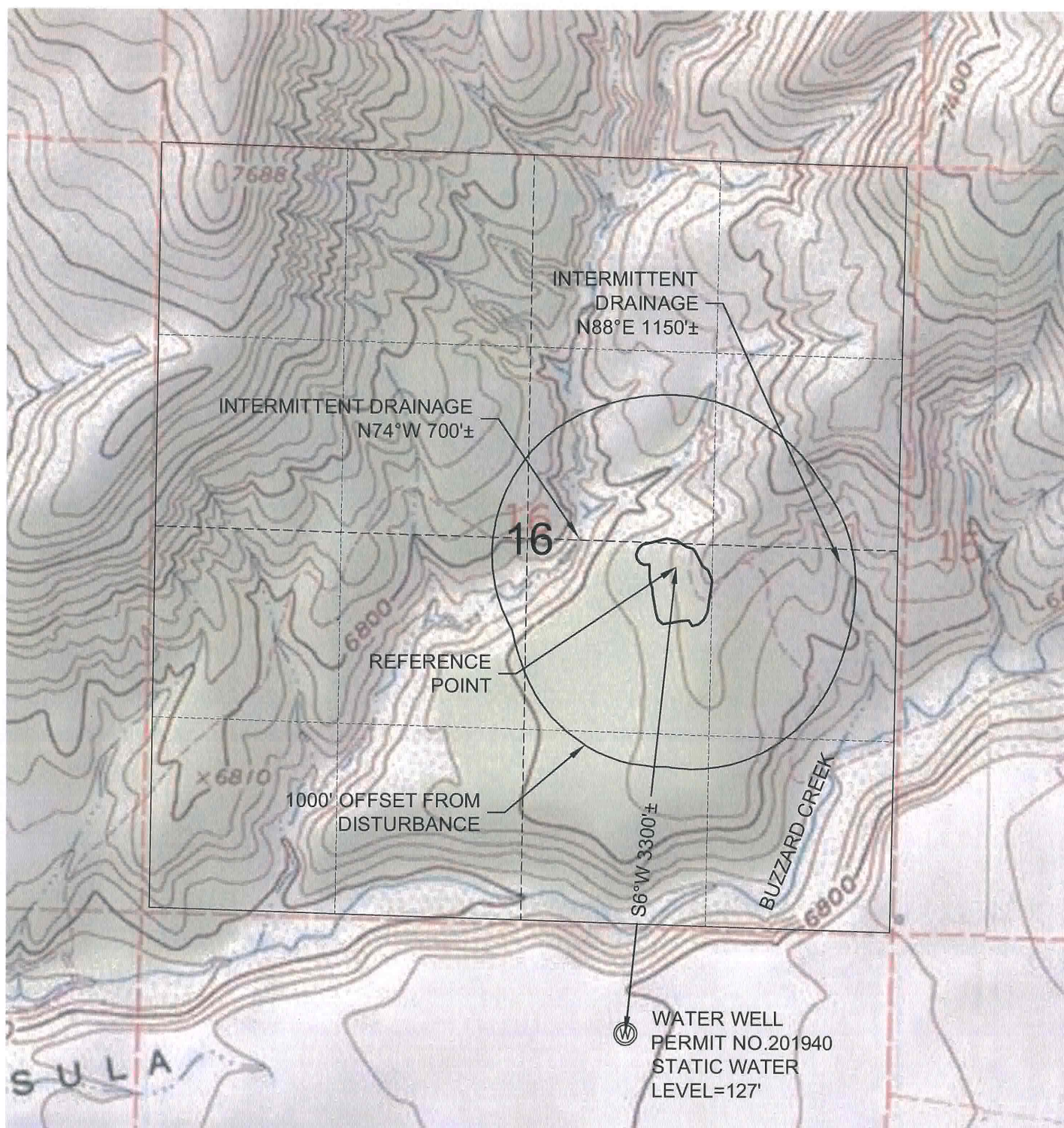


LAND SURVEYING AND MAPPING
520 STACY COURT SUITE "B"
LAFAYETTE, CO. 80026
Ph 303 666 0379 Fx 303 665 6320

OXY USA, INC
SOUTH COLLBRAN FEDERAL 15-4

SL NW1/4 SE1/4 SEC. 16 T9S R94W
BH NW1/4 NW1/4 SEC. 15 T9S R94W
6th PM MESA COUNTY COLORADO

HYDROLOGY MAP



GRID



Graphic Scale in Feet
1 inch = 1000 feet



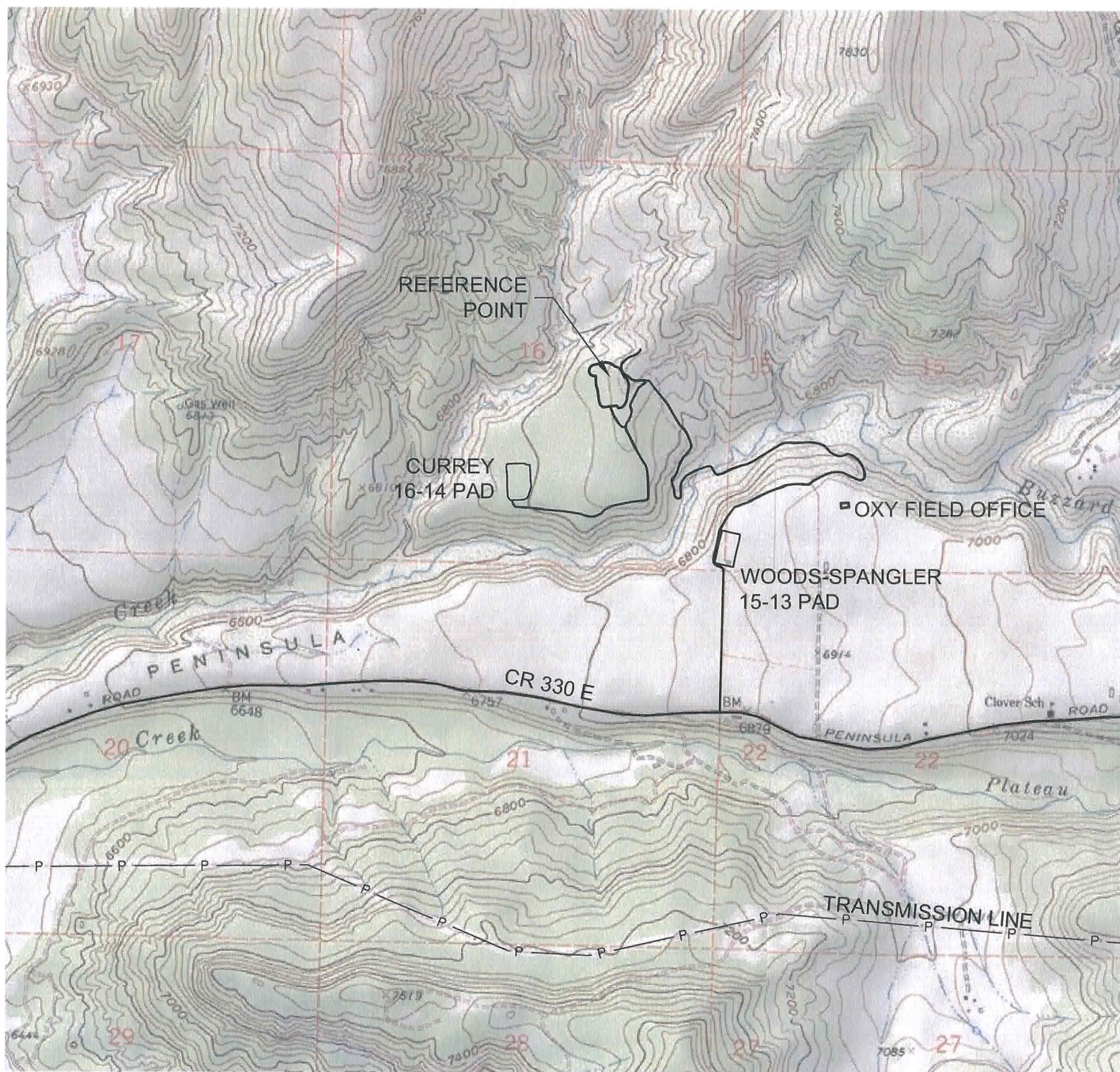
LAND SURVEYING AND MAPPING
LAFAYETTE - WINTER PARK
Ph 303 666 0379 Fx 303 665 6320

OXY USA, INC
CURREY 16-10 PAD

NW1/4 SE1/4 SEC. 16 T9S R94W
6th PM MESA COUNTY COLORADO

4/16/10

ACCESS ROAD MAP



DRIVING DIRECTIONS:

From Town of Collbran, beginning at intersection of Main Street
& CR 330 E; East on CR 330 E
MP 4.9 Left on gravel access
MP 5.3 Pass west side of Woods-Spangler 15-13 Pad
MP 6.3 Bridge over Buzzard Creek
MP 6.9 Right on access to pad
MP 7.0 Currey 16-10 Pad

4/16/10



GRID



Graphic Scale in Feet
1 inch = 2000 feet

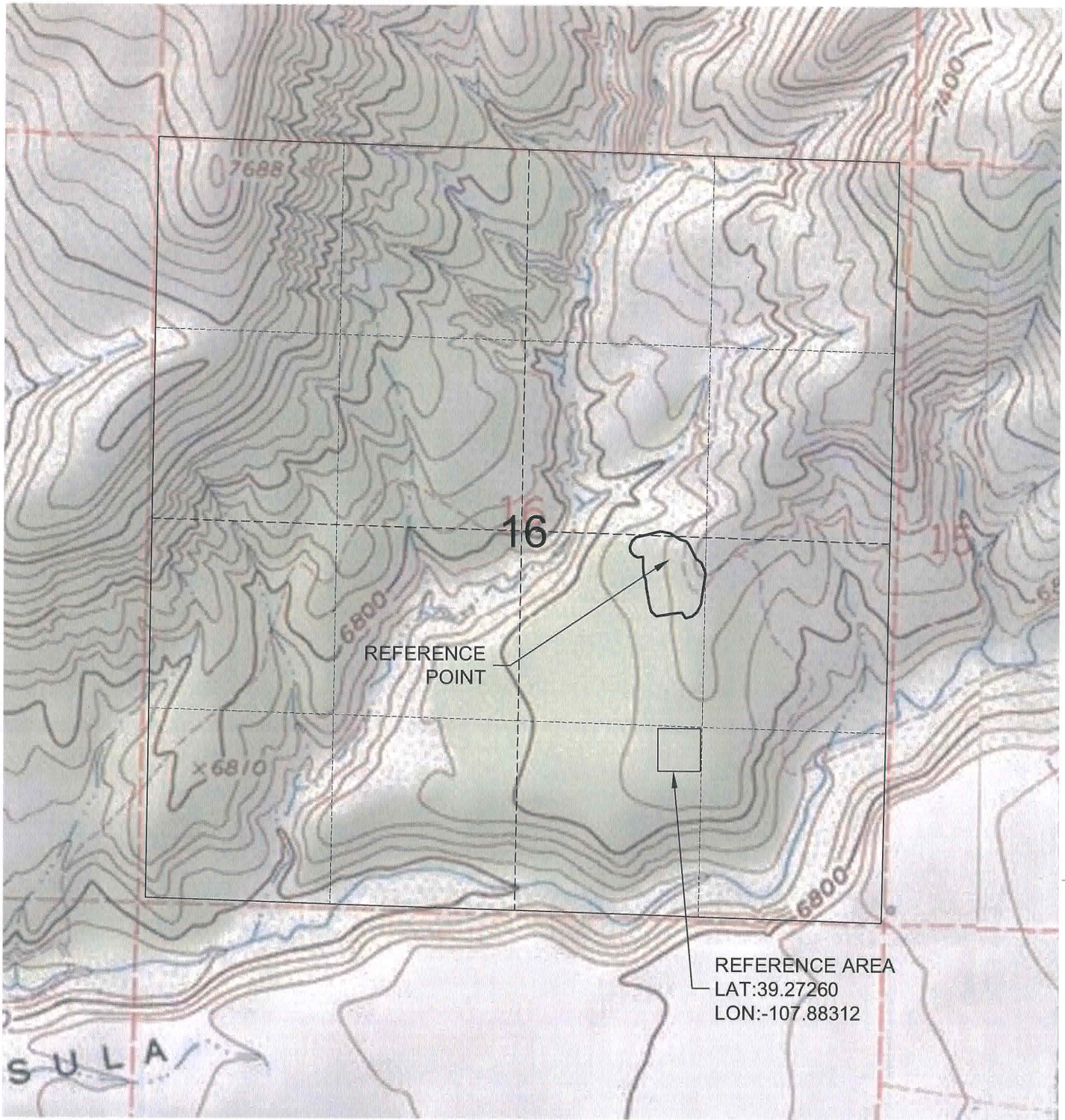


LAND SURVEYING AND MAPPING
LAFAYETTE - WINTER PARK
Ph 303 666 0379 Fx 303 665 6320

OXY USA, INC
CURREY 16-10 PAD

NW1/4 SE1/4 SEC. 16 T9S R94W
6th PM MESA COUNTY COLORADO

REFERENCE AREA MAP



GRID



Graphic Scale in Feet
1 Inch = 2000 feet



LAND SURVEYING AND MAPPING
LAFAYETTE - WINTER PARK
Ph 303 666 0379 Fx 303 665 6320

OXY USA, INC
CURREY 16-10 PAD

NW1/4 SE1/4 SEC. 16 T9S R94W
6th PM MESA COUNTY COLORADO

4/16/10

TOPOGRAPHIC MAP

CURREY
16-10 PAD



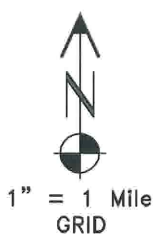
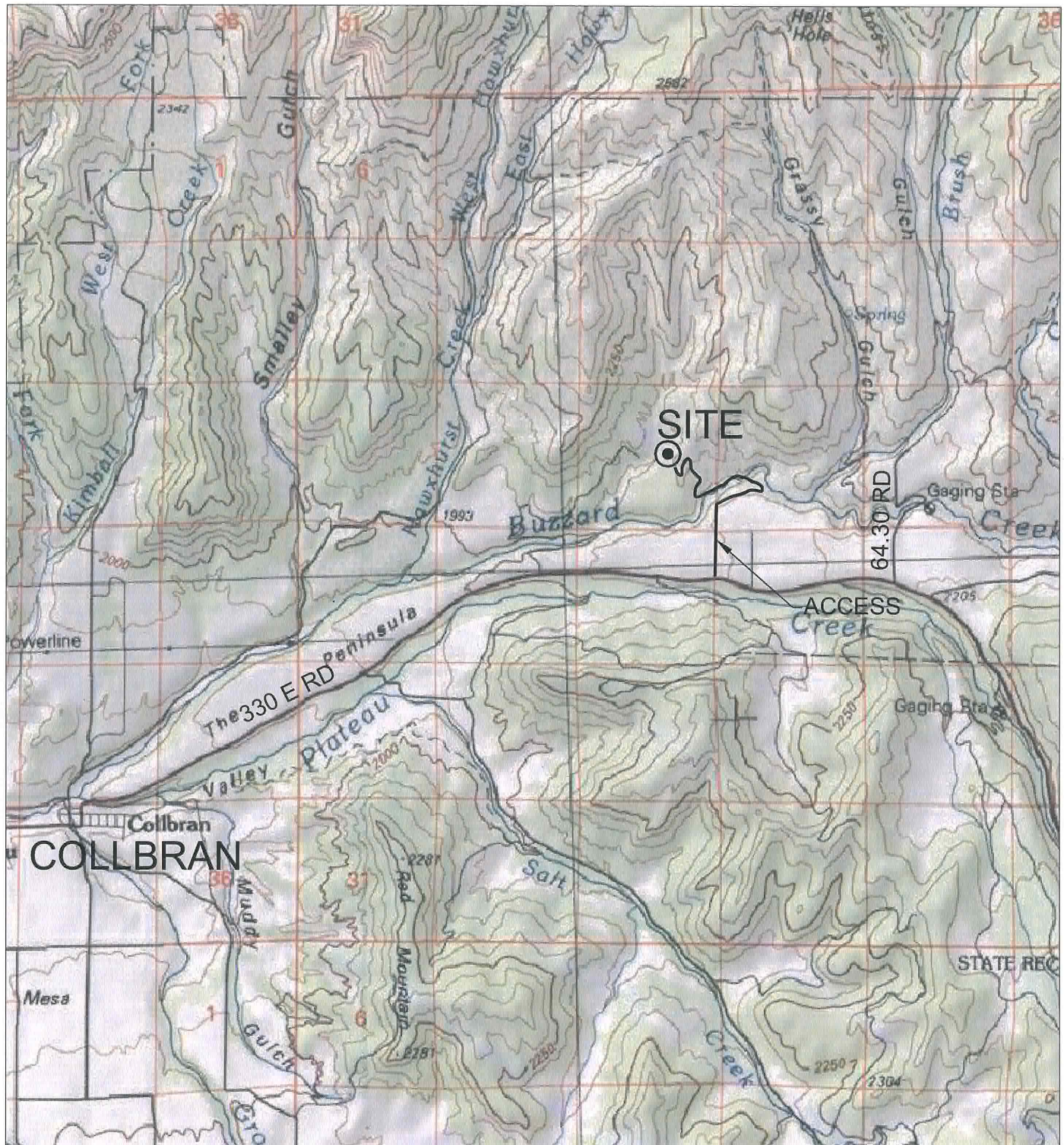
LAND SURVEYING AND MAPPING
LAFAYETTE - WINTER PARK
Ph 303 666 0379 Fx 303 665 6320

OXY USA, INC
SOUTH COLLBRAN FEDERAL 15-4

SL NW1/4 SE1/4 SEC. 16 T9S R94W
BH NW1/4 NW1/4 SEC. 15 T9S R94W
6th PM MESA COUNTY COLORADO

VICINITY MAP

CURREY
16-10 PAD



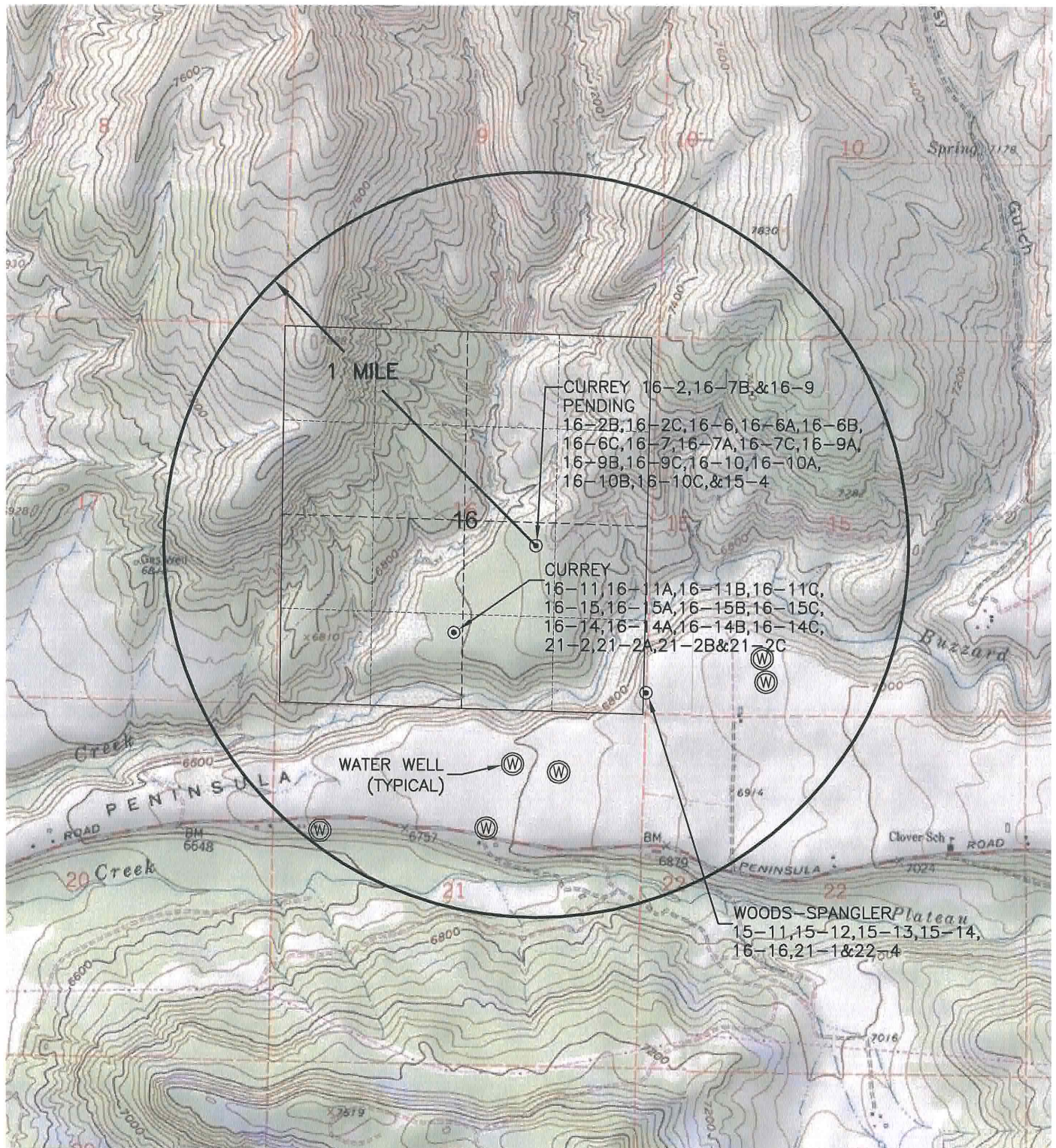
LAND SURVEYING AND MAPPING
LAFAYETTE - WINTER PARK
Ph 303 666 0379 Fx 303 665 6320

OXY USA, INC
SOUTH COLLBRAN FEDERAL 15-4

SL NW1/4 SE1/4 SEC. 16 T9S R94W
BH NW1/4 NW1/4 SEC. 15 T9S R94W
6th PM MESA COUNTY COLORADO

WELL VICINITY MAP

CURREY
16-10 PAD



LAND SURVEYING AND MAPPING
520 STACY COURT SUITE "B"
LAFAYETTE, CO. 80026
Ph 303 666 0379 Fx 303 665 6320

OXY USA, INC
SOUTH COLLBRAN FEDERAL 15-4

SL NW1/4 SE1/4 SEC. 16 T9S R94W
BH NW1/4 NW1/4 SEC. 15 T9S R94W
6th PM MESA COUNTY COLORADO

LOCATION PICTURES

Currey 16-10 Pad
NWSE Sec. 16 Twn. 9S Rng. 94W 6th PM
Lat: 39.276235 Long: -107.883582

Oxy USA, Inc
Mesa County, CO
Date of Pictures: 4/14/2010



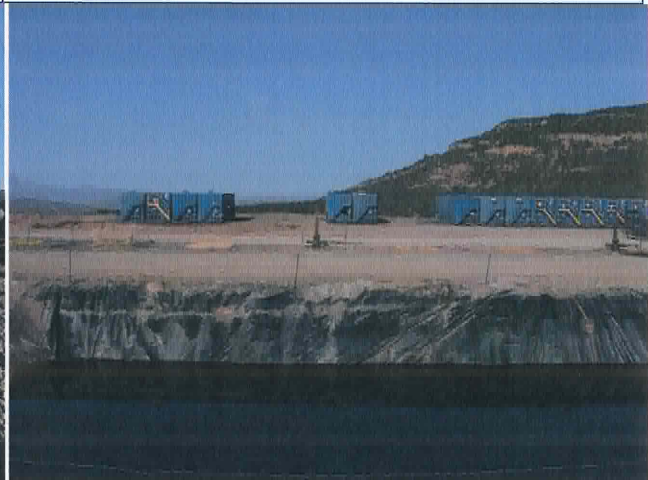
PAD NORTH



PAD EAST



PAD SOUTH



PAD WEST



ACCESS OFF CR 330E



ACCESS TO PAD



GEOSURV Inc. 520 Stacy CT Suite B Lafayette CO 80026 ph 303 666 0379 fx 303 665 6320

G:\GEOSURV\VOXY\Brush Creek\WellPlats\Currey\Currey 16-10 Pad\Photos\Currey 16-10 Pad Pics.docx 4/19/2010 8:56:00 AM

REFERENCE PHOTOS
Currey 16-10 Pad

Reference Location
SWSE Sec. 16 Twn. 9S Rng. 94W 6th PM
Lat: 39.27260 Long: -107.88312

Oxy USA, Inc
Mesa County, CO
Date of Pictures: 4/14/2010



NORTH



EAST



SOUTH



WEST



GEOSURV Inc. 520 Stacy CT Suite B Lafayette CO 80026 ph 303 666 0379 fx 303 665 6320

G:\GEOSURV\OXY\Brush Creek\WellPlats\Currey\Currey 16-10 Pad\Photos\Currey 16-10 Ref Pics.docx 4/19/2010 8:57:00 AM