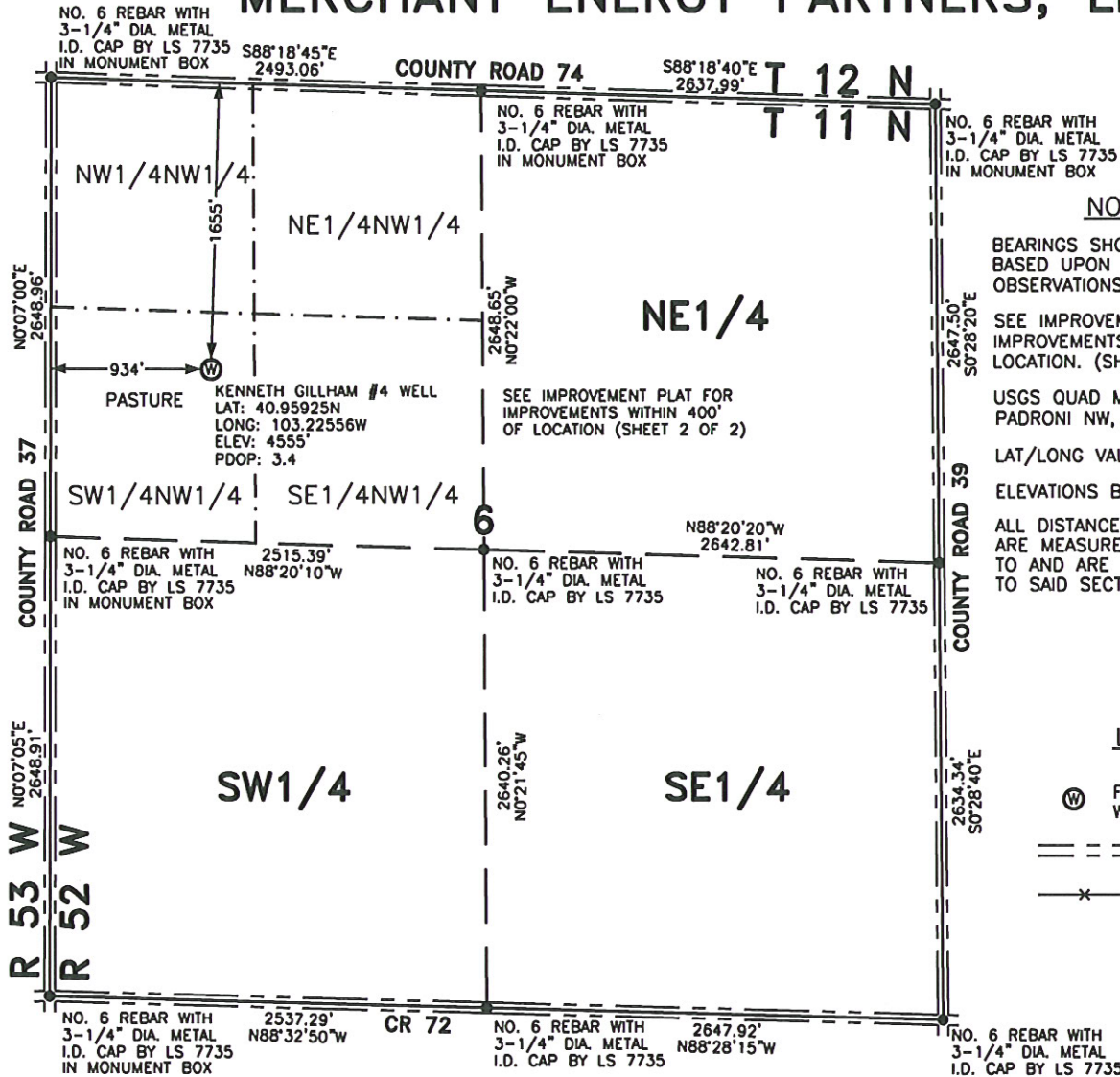


WELL LOCATION FOR MERCHANT ENERGY PARTNERS, LLC



NOTES

BEARINGS SHOWN HEREON ARE
BASED UPON RTK GPS
OBSERVATIONS

SEE IMPROVEMENT PLAT FOR
IMPROVEMENTS WITHIN 400'
OF LOCATION. (SHEET 2)

USGS QUAD MAP:
PADRONI NW, COLO.

LAT/LONG VALUES ARE NAD83

ELEVATIONS BASED ON NAVD 1988

ALL DISTANCES TO SECTION LINES
ARE MEASURED PERPENDICULAR
TO AND ARE AT RIGHT ANGLES
TO SAID SECTION LINES.

LEGEND



FIELD SURVEYED
WELL LOCATION

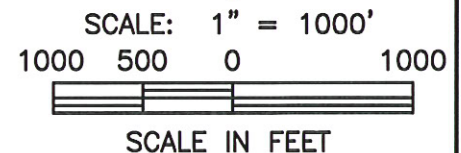


ROAD



FENCE

THIS WELL LOCATION PLAT HAS BEEN PREPARED FOR MERCHANT ENERGY PARTNERS, LLC,
TO LOCATE THE KENNETH GILLHAM #4 WELL BEING 934 FEET FROM THE WEST LINE AND
1655 FEET FROM THE NORTH LINE IN THE SW1/4NW1/4 OF SECTION 6,
TOWNSHIP 11 NORTH, RANGE 52 WEST OF THE 6TH P.M., LOGAN COUNTY, COLORADO.
THE SURFACE ELEVATION AT THIS POINT IS 4555 FEET.
THIS IS NOT A LAND SURVEY PLAT.



LEIBERT-McATEE & ASSOCIATES, INC.

P.O. BOX 442 615 SOUTH TENTH AVENUE
STERLING, CO 80751 970-522-1960

FIELD DATE: 4-27-10	DWG DATE: 5-17-10	GPS OPERATOR: DARREN VEAL
KENNETH GILLHAM #4	DWG NO. 1521-09	SHEET 1 OF 2