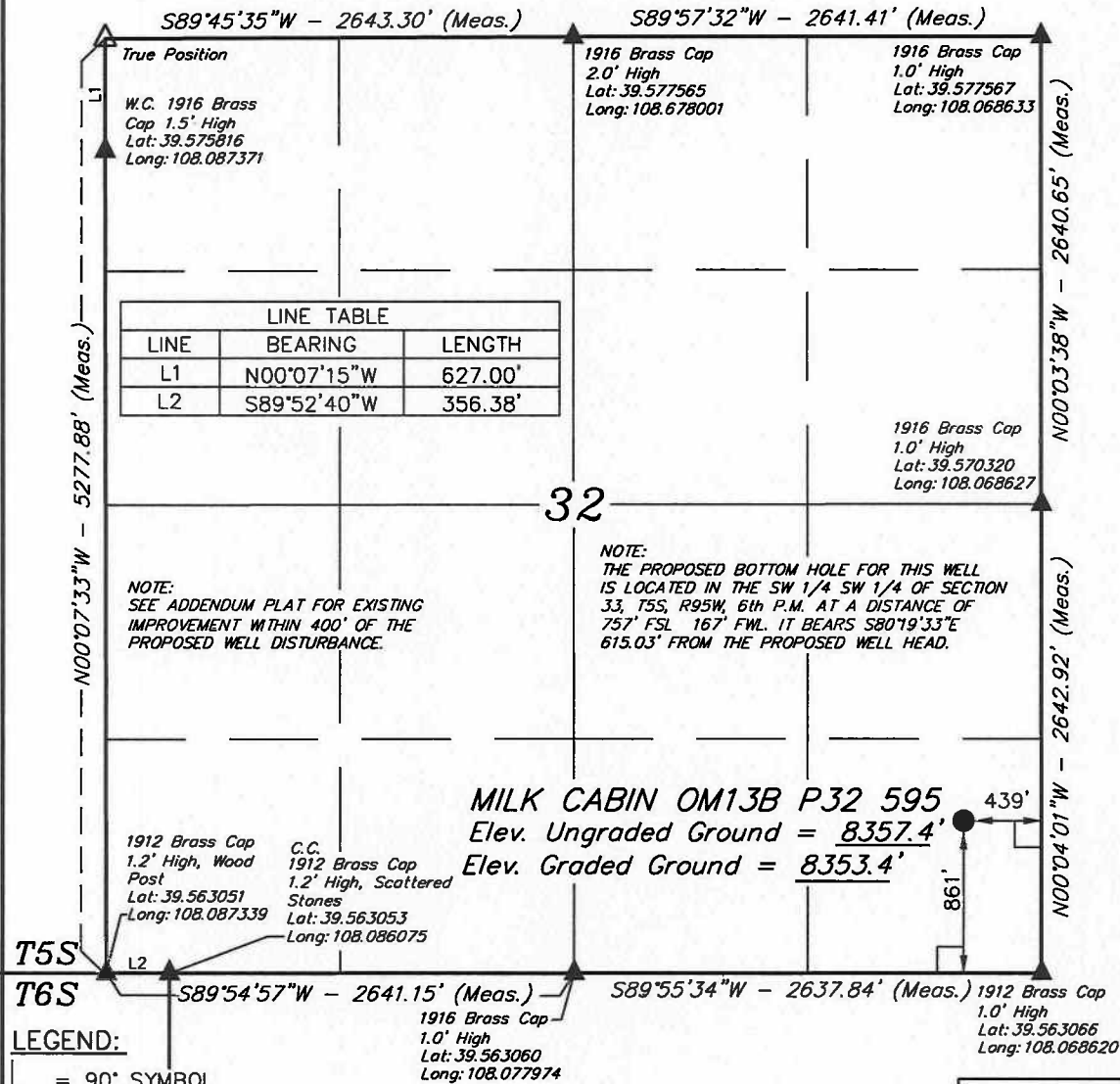


T5S, R95W, 6th P.M.



LEGEND:

- = 90° SYMBOL
- = PROPOSED WELL HEAD.
- ▲ = SECTION CORNERS LOCATED.
- △ = SECTION CORNERS RE-ESTAB. BY SINGLE PROPORTION METHOD.

## BERRY PETROLEUM COMPANY

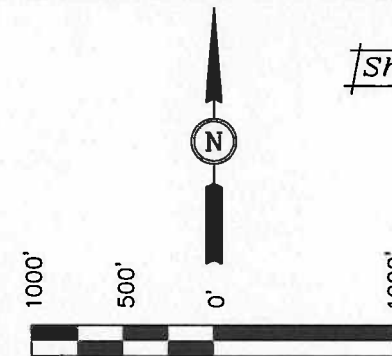
Well location, MILK CABIN OM13B P32 595 (SURFACE LOCATION), located as shown in the SE 1/4 SE 1/4 of Section 32, T5S, R95W, 6th P.M., Garfield County, Colorado.

### BASIS OF ELEVATION

SPOT ELEVATION AT THE NORTHWEST CORNER OF SECTION 30, T5S, R95W, 6th P.M. TAKEN FROM THE FORKED GULCH QUADRANGLE, COLORADO, GARFIELD COUNTY, 7.5 MINUTE SERIES (TOPOGRAPHICAL MAP) PUBLISHED BY THE UNITED STATES DEPARTMENT OF THE INTERIOR, GEOLOGICAL SURVEY. SAID ELEVATION IS MARKED AS BEING 5966 FEET.

### BASIS OF BEARINGS

BASIS OF BEARINGS IS A G.P.S. OBSERVATION.



SCALE

CERTIFICATE

THIS IS TO CERTIFY THAT THE ABOVE PLAT WAS PREPARED FROM FIELD NOTES OF ACTUAL SURVEYS MADE BY ME OR UNDER MY SUPERVISION AND THAT THE SAME ARE TRUE AND CORRECT TO THE BEST OF MY KNOWLEDGE AND BELIEF.

Revised: 04-29-10 D.R.B.  
Revised: 03-23-09 D.R.B.  
Revised: 02-20-09 D.R.B.  
Revised: 02-10-09 D.R.B.

REGISTERED LAND SURVEYOR  
REGISTRATION NO. 174920  
STATE OF COLORADO

UINTAH ENGINEERING & LAND SURVEYING  
85 SOUTH 200 EAST - VERNAL, UTAH 84078  
(435) 789-1017

SCALE 1" = 1000'	DATE SURVEYED: 08-31-06	DATE DRAWN: 09-12-06
PARTY G.O. B.S. D.R.B.	REFERENCES G.L.O. PLAT	
WEATHER WARM	FILE BERRY PETROLEUM COMPANY	

NAD 83 (SURFACE LOCATION)
LATITUDE = 39°33'55.54" (39.565428)
LONGITUDE = 108°04'12.64" (108.070178)
NAD 27 (SURFACE LOCATION)
LATITUDE = 39°33'55.62" (39.565450)
LONGITUDE = 108°04'10.37" (108.069547)

PDOP = 2.7

T5S, R95W, 6th P.M.

# BERRY PETROLEUM COMPANY

Well location, MILK CABIN OM13B P32 595 (TARGET BOTTOM HOLE), located as shown in the SW 1/4 SW 1/4 of Section 33, T5S, R95W, 6th P.M., Garfield County, Colorado.

## BASIS OF ELEVATION

SPOT ELEVATION AT THE NORTHWEST CORNER OF SECTION 30, T5S, R95W, 6th P.M. TAKEN FROM THE FORKED GULCH QUADRANGLE, COLORADO, GARFIELD COUNTY, 7.5 MINUTE SERIES (TOPOGRAPHICAL MAP) PUBLISHED BY THE UNITED STATES DEPARTMENT OF THE INTERIOR, GEOLOGICAL SURVEY. SAID ELEVATION IS MARKED AS BEING 5966 FEET.

## BASIS OF BEARINGS

BASIS OF BEARINGS IS A G.P.S. OBSERVATION.

Sheet 1g of 12



SCALE

## CERTIFICATE

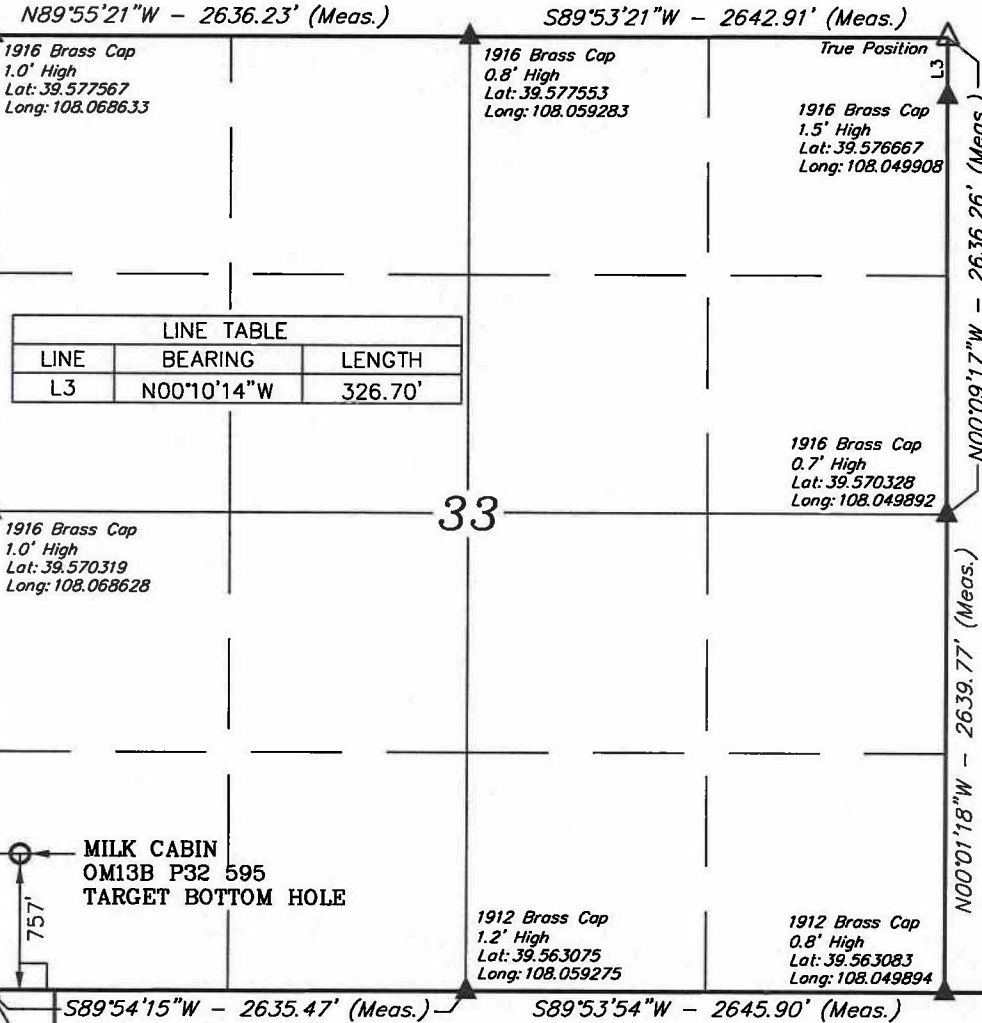
THIS IS TO CERTIFY THAT THE ABOVE PLAT WAS PREPARED FROM FIELD NOTES OF ACTUAL SURVEYS MADE BY ME UNDER MY SUPERVISION AND THAT THE SAME ARE TRUE AND CORRECT TO THE BEST OF MY KNOWLEDGE AND BELIEF.

REGISTERED LAND SURVEYOR  
REGISTRATION NO. 17492  
STATE OF COLORADO

Revised: 03-23-09 D.R.B.

**UINTAH ENGINEERING & LAND SURVEYING**  
85 SOUTH 200 EAST - VERNAL, UTAH 84078  
(435) 789-1017

SCALE 1" = 1000'	DATE SURVEYED: 08-31-06	DATE DRAWN: 02-10-09
PARTY G.O. B.S. D.R.B.	REFERENCES G.L.O. PLAT	
WEATHER WARM	FILE BERRY PETROLEUM COMPANY	



LINE TABLE		
LINE	BEARING	LENGTH
L3	N00°10'14"W	326.70'

## LEGEND:

- └ = 90° SYMBOL
- = PROPOSED WELL HEAD.
- ▲ = SECTION CORNERS LOCATED.
- △ = SECTION CORNERS RE-ESTAB.

NAD 83 (TARGET BOTTOM HOLE)	
LATITUDE = 39°33'54.52" (39.565144)	LONGITUDE = 108°04'04.91" (108.068031)
NAD 27 (TARGET BOTTOM HOLE)	
LATITUDE = 39°33'54.60" (39.565167)	LONGITUDE = 108°04'02.63" (108.067397)

1912 Brass Cap  
1.0' High  
Lat: 39.563067  
Long: 108.068619