

# Berry Petroleum Company

1999 Broadway, Suite 3700

Denver, CO 80202

Main (303) 999-4400

Fax (303) 999-4401

[www.bry.com](http://www.bry.com)

June 10, 2010

Mr. Bob Weaver  
Encana Oil & Gas (USA) Inc.  
370 17<sup>th</sup> Street, Suite 1700  
Denver, CO 80202

RE: North Parachute Ranch  
30 Day Notice Requirement (Rule 305 and 306)  
Milk Cabin OM01A P32 595, OM09B, OM09C,  
OM09D, OM13B, OM16A, OM16B, OM16D  
**P32 595 Pad** –SESE Section 32 5S 95W  
Garfield County, Colorado

Dear Bob,

Please be advised that Berry Petroleum Company will be re-filing permits with the Colorado Oil and Gas Conservation Commission for the above-referenced wells.

- There have been no changes on land use and lease description.
- The pad has been built and the pit has not been constructed.
- Conductors have not been set.
- No wells have been drilled to T.D.
- No rig is on-site at this time.
- The re-files will not require any expansion and/or additional surface disturbance of the pad.
- The location does not require a variance from any of the rules listed in Rule 306.d. (1). (A).(ii).
- The location is not in a restricted surface occupancy area, it is in sensitive wildlife habitat area for Elk production.

Pursuant to Rule 305 and 306, the enclosed notification is required as part of the permitting process. Please sign and date where indicated and return to my attention.

Please contact me at 303.999.4246 if you have any questions.

Thank you for your assistance in this matter.

Very truly yours,

Patsy Branson  
Senior Landman

:enclosures

cc: Janni Keidel  
Land Well file

**NOTICE REQUIREMENTS (RULE 305)**  
**(P32 595 PAD)**

**Re: Well Name – Milk Cabin OM01A P32 595, OM09B, OM09C, OM09D, OM13B, OM16A, OM16B, OM16D, located in SESE of Section 32, Township 5 South, Range 95 West, Garfield County, Colorado.**

In accordance with the Colorado Oil and Gas Conservation Commission for Notices of Oil and Gas Operations, Rule 305, the following information is required to be provided:

- Operations on the above referenced wells are estimated to commence on approximately August 1, 2010.
- The operator will be: Berry Petroleum Company  
1999 Broadway, Suite 3700  
Denver, Colorado 80202  
(303) 999-4400
- You may contact: Patsy Branson, Senior Landman at (303) 999-4246, if you have any questions regarding this notice.

Milk Cabin OM01A P32 595 – API # 05-045-18674-00

The legal description of the lands upon which operations will be conducted are:

Surface Hole: 831' FSL and 438' FEL, Sec. 32, T5S, R95W

Bottom Hole: 274' FNL and 576' FEL, Sec. 2, T6S, R96W

Garfield County, Colorado

Milk Cabin OM09B P32 595 – API # 05-045-18668-00

The legal description of the lands upon which operations will be conducted are:

Surface Hole: 936' FSL and 440' FEL, Sec. 32, T5S, R95W

Bottom Hole: 2,235' FSL and 357' FEL, Sec. 32, T5S, R95W

Garfield County, Colorado

Milk Cabin OM09C P32 595 – API # 05-045-18672-00

The legal description of the lands upon which operations will be conducted are:

Surface Hole: 921' FSL and 440' FEL, Sec. 32, T5S, R95W

Bottom Hole: 1,925' FSL and 453' FEL, Sec. 32, T5S, R95W

Garfield County, Colorado

Page 2

**Milk Cabin OM01A P32 595, OM09B, OM09C,  
OM09D, OM13B, OM16A, OM16B, OM16D**

**P32 595 Pad – SESE Section 32 5S 95W**

Encana Oil & Gas (U.S.A.) Inc.

June 10, 2010

Milk Cabin OM09D P32 595– API # 05-045-18673-00

The legal description of the lands upon which operations will be conducted are:

Surface Hole: 906' FSL and 440' FEL, Sec. 32, T5S, R95W

Bottom Hole: 1,602' FSL and 652' FEL, Sec. 32, T5S, R95W

Garfield County, Colorado

Milk Cabin OM13B P32 595 – API # 05-045-18675-00

The legal description of the lands upon which operations will be conducted are:

Surface Hole: 861' FSL and 439' FEL, Sec. 32, T5S, R95W

Bottom Hole: 757' FSL and 167' FWL, Sec. 33, T5S, R95W

Garfield County, Colorado

Milk Cabin OM16A P32 595 – API # 05-045-18671-00

The legal description of the lands upon which operations will be conducted are:

Surface Hole: 891' FSL and 439' FEL, Sec. 32, T5S, R95W

Bottom Hole: 1,308' FSL and 337' FEL, Sec. 32, T5S, R95W

Garfield County, Colorado

Milk Cabin OM16B P32 595 – API # 05-045-18670-00

The legal description of the lands upon which operations will be conducted are:

Surface Hole: 876' FSL and 439' FEL, Sec. 32, T5S, R95W

Bottom Hole: 1,016' FSL and 356' FEL, Sec. 32, T5S, R95W

Garfield County, Colorado

Milk Cabin OM16D P32 595 – API # 05-045-18669-00

The legal description of the lands upon which operations will be conducted are:

Surface Hole: 846' FSL and 439' FEL, Sec. 32, T5S, R95W

Bottom Hole: 439' FSL and 203' FEL, Sec. 32, T5S, R95W

Garfield County, Colorado

- The surface owner has the responsibility for notifying any affected tenant of the proposed operations.
- A brochure describing surface owner rights is available upon request from:  
Colorado Oil and Gas Conservation Commission  
1120 Lincoln Street  
Suite 801  
Denver, Co 80203

By signing below, the surface owner waives the above notification requirements of Rule 305.

EnCana Oil & Gas (U.S.A.) Inc.

By: \_\_\_\_\_

Printed Name: \_\_\_\_\_

Title: \_\_\_\_\_

Date: \_\_\_\_\_

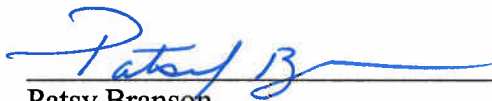
**SURFACE OWNER CONSULTATION (RULE 306)  
(P32 595 PAD)**

Berry Petroleum Company confirms that the Surface Owner Consultation requirements of Rule 306 have been completed or waived for the following proposed well pad.

**Well Name – Milk Cabin OM01A P32 595, OM09B, OM09C, OM09D,  
OM13B, OM16A, OM16B, OM16D, located in SESE of  
Section 32, Township 5 South, Range 95 West,  
Garfield County, Colorado.**

Road Description: Existing roadway use and new construction as required for access was previously agreed upon by all parties.

Berry Petroleum Company



Patsy Branson  
Senior Landman



Date



BERRY PETROLEUM COMPANY

Well location, MILK CABIN OM01A P32 595 (SURFACE LOCATION), located as shown in the SE 1/4 SE 1/4 of Section 32, T5S, R95W, 6th P.M., Garfield County, Colorado.

BASIS OF ELEVATION

SPOT ELEVATION AT THE NORTHWEST CORNER OF SECTION 30, T5S, R95W, 6th P.M. TAKEN FROM THE FORKED GULCH QUADRANGLE, COLORADO, GARFIELD COUNTY, 7.5 MINUTE SERIES (TOPOGRAPHICAL MAP) PUBLISHED BY THE UNITED STATES DEPARTMENT OF THE INTERIOR, GEOLOGICAL SURVEY. SAID ELEVATION IS MARKED AS BEING 5966 FEET.

BASIS OF BEARINGS

BASIS OF BEARINGS IS A G.P.S. OBSERVATION.

Sheet 1a of 12



SCALE

CERTIFICATE

THIS IS TO CERTIFY THAT THE ABOVE PLAT WAS PREPARED FROM FIELD NOTES OF ACTUAL SURVEYS MADE BY ME OR UNDER MY SUPERVISION AND THAT THE SAME ARE TRUE AND CORRECT TO THE BEST OF MY KNOWLEDGE AND BELIEF.

Revised: 04-29-10 D.R.B.  
Revised: 03-23-09 D.R.B.  
Revised: 02-20-09 D.R.B.  
Revised: 02-10-09 D.R.B.

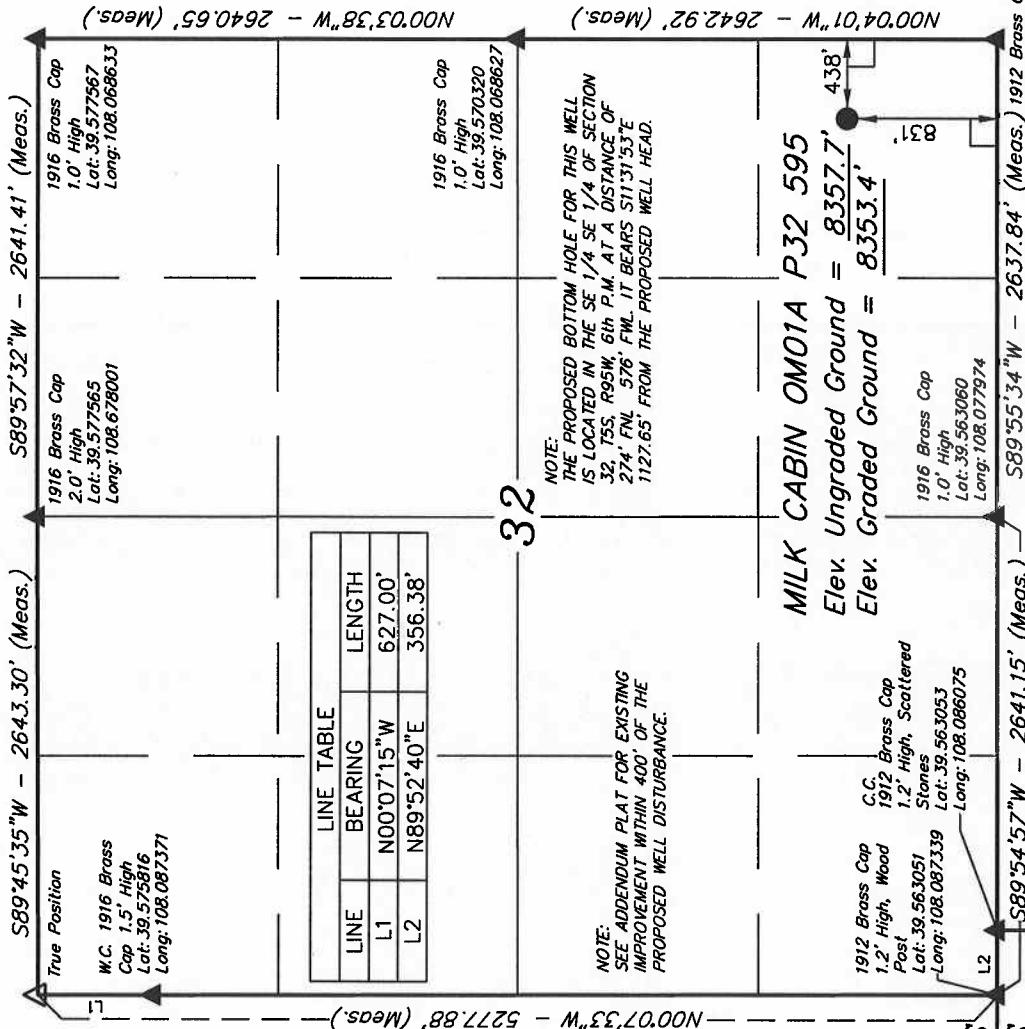
REGISTERED LAND SURVEYOR  
JULY 1982  
STATE OF COLORADO  
C.C. COOK

UNTAH ENGINEERING & LAND SURVEYING

85 SOUTH 200 EAST - VERNAL, UTAH 84078  
(435) 789-1017

SCALE 1" = 1000'	DATE SURVEYED: 08-31-06	DATE DRAWN: 09-12-06
PARTY G.O. B.S. D.R.B.	REFERENCES G.L.O. PLAT	
WEATHER WARM	FILE	
		BERRY PETROLEUM COMPANY

T5S, R95W, 6th P.M.



LEGEND:

- 90° SYMBOL
- PROPOSED WELL HEAD.
- SECTION CORNERS LOCATED.
- SECTION CORNERS RE-ESTAB.
- BY SINGLE PROPORTION METHOD.

PDOP = 2.7
NAD 83 (SURFACE LOCATION)
LATITUDE = 39°33'55.25" (39.565347)
LONGITUDE = 108°04'12.64" (108.070178)
NAD 27 (SURFACE LOCATION)
LATITUDE = 39°33'55.33" (39.565369)
LONGITUDE = 108°04'10.36" (108.069544)

1912 Brass Cap  
1.2' High, Wooden  
Post  
Lat: 39.563053  
Long: 108.087339

T5S  
S89°54'57"W - 2641.15' (Meas.)

1916 Brass Cap  
1.0' High  
Lat: 39.563061  
Long: 108.077975

S89°55'34"W - 2637.84' (Meas.)

T6S

1912 Brass Cap  
1.2' High, Scattered  
Stones  
Lat: 39.563053  
Long: 108.086075

LOT 4

MILK CABIN  
OM01A P32 595  
TARGET BOTTOM HOLE

LOT 2

LOT 3

1912 Brass Cap  
1.0' High  
Lat: 39.563067  
Long: 108.067336

S89°54'15"W - 2635.47' (Meas.)

# BERRY PETROLEUM COMPANY

Well location, MILK CABIN OM01A P32 595 (TARGET BOTTOM HOLE), located as shown in the NE 1/4 NE 1/4 of Section 2, T6S, R96W, 6th P.M., Garfield County, Colorado.

## BASIS OF ELEVATION

SPOT ELEVATION AT THE NORTHWEST CORNER OF SECTION 30, T5S, R95W, 6th P.M. TAKEN FROM THE FORKED GULCH QUADRANGLE, COLORADO, GARFIELD COUNTY, 7.5 MINUTE SERIES (TOPOGRAPHICAL MAP) PUBLISHED BY THE UNITED STATES DEPARTMENT OF THE INTERIOR, GEOLOGICAL SURVEY. SAID ELEVATION IS MARKED AS BEING 5966 FEET.

## BASIS OF BEARINGS

BASIS OF BEARINGS IS A G.P.S. OBSERVATION.



S C A L E

Sheet 1b of 12

## CERTIFICATE

THIS IS TO CERTIFY THAT THE ABOVE PLAT WAS PREPARED FROM FIELD NOTES OF ACTUAL SURVEYS MADE BY ME UNDER MY SUPERVISION AND THAT THE SAME ARE TRUE AND CORRECT TO THE BEST OF MY KNOWLEDGE AND BELIEF.

Revised: 04-29-10 D.R.B.  
Revised: 03-23-09 D.R.B.

REGISTERED LAND SURVEYOR  
REGISTRATION NO. 17332  
STATE OF COLORADO

## UINTAH ENGINEERING & LAND SURVEYING

85 SOUTH 200 EAST - VERNAL, UTAH 84078  
(435) 789-1017

SCALE 1" = 1000'	DATE SURVEYED: 08-31-06	DATE DRAWN: 09-12-06
PARTY G.O. B.S. D.R.B.	REFERENCES G.L.O. PLAT	
WEATHER WARM	FILE	
		BERRY PETROLEUM COMPANY

NAD 83 (TARGET BOTTOM HOLE) LATITUDE = 39°33'44.33" (39.562314) LONGITUDE = 108°04'09.77" (108.069381) NAD 27 (TARGET BOTTOM HOLE) LATITUDE = 39°33'44.41" (39.562336) LONGITUDE = 108°04'07.49" (108.068747)
--

LOT 7 LOT 8

LOT 9  
NOTE:  
THE PROPOSED BOTTOM HOLE FOR THIS WELL  
BEARS S71°31'53"E 1127.65' FROM THE  
PROPOSED WELL HEAD.

LOT 10

LOT 11

LOT 12

1912 Brass Cap  
0.2' High, N-S  
Fence Line  
Lat: 39.551944  
Long: 108.067350

LINE	BEARING	LENGTH
L2	N89°52'40"E	356.38'
L3	S89°54'51"W	362.28'

1912 Brass Cap  
1.2' High, E-W  
Fence Line  
Lat: 39.544694  
Long: 108.067336

N89°56'24"W - 5276.15' (Meas.)

N00°04'56"W - 2637.75' (Meas.)

N00°07'03"W - 4044.09' (Meas.)

BERRY PETROLEUM COMPANY

Well location, MILK CABIN OM09B P32 595, located as shown in the SE 1/4 SE 1/4 of Section 32, T5S, R95W, 6th P.M., Garfield County, Colorado.

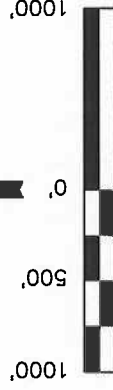
BASIS OF ELEVATION

SPOT ELEVATION AT THE NORTHWEST CORNER OF SECTION 30, T5S, R95W, 6th P.M. TAKEN FROM THE FORKED GULCH QUADRANGLE, COLORADO, GARFIELD COUNTY, 7.5 MINUTE SERIES (TOPOGRAPHICAL MAP) PUBLISHED BY THE UNITED STATES DEPARTMENT OF THE INTERIOR, GEOLOGICAL SURVEY. SAID ELEVATION IS MARKED AS BEING 5966 FEET.

BASIS OF BEARINGS

BASIS OF BEARINGS IS A G.P.S. OBSERVATION.

Sheet 1c of 12



SCALE

CERTIFICATE

THIS IS TO CERTIFY THAT THE ABOVE PLAT WAS PREPARED FROM FIELD NOTES OF ACTUAL SURVEYS MADE BY ME OR UNDER MY SUPERVISION AND THAT THE SAME ARE TRUE AND CORRECT TO THE BEST OF MY KNOWLEDGE AND BELIEF.

Revised: 04-29-10 D.R.B.  
Revised: 03-23-09 D.R.B.  
Revised: 02-20-09 D.R.B.  
Revised: 02-10-09 D.R.B.

REGISTERED LAND SURVEYOR  
REGISTRATION NO. 17493  
STATE OF COLORADO

UNTAH ENGINEERING & LAND SURVEYING

85 SOUTH 200 EAST - VERNAL, UTAH 84078  
(435) 789-1017

SCALE 1" = 1000'	DATE SURVEYED: 08-31-06	DATE DRAWN: 09-12-06
PARTY G.O. B.S. D.R.B.	REFERENCES G.L.O. PLAT	
WEATHER WARM	FILE	
		BERRY PETROLEUM COMPANY

PDOP = 2.6		
NAD 83 (TARGET BOTTOM HOLE)	NAD 83 (SURFACE LOCATION)	
LATITUDE = 39°34'09.12" (39.569200)	LATITUDE = 39°33'56.28" (39.565633)	
LONGITUDE = 108°04'11.62" (108.069894)	LONGITUDE = 108°04'12.66" (108.070183)	
NAD 27 (TARGET BOTTOM HOLE)	NAD 27 (SURFACE LOCATION)	
LATITUDE = 39°34'09.20" (39.569222)	LATITUDE = 39°33'56.36" (39.565656)	
LONGITUDE = 108°04'09.34" (108.069261)	LONGITUDE = 108°04'10.39" (108.069553)	

LEGEND:  
● = PROPOSED WELL HEAD.

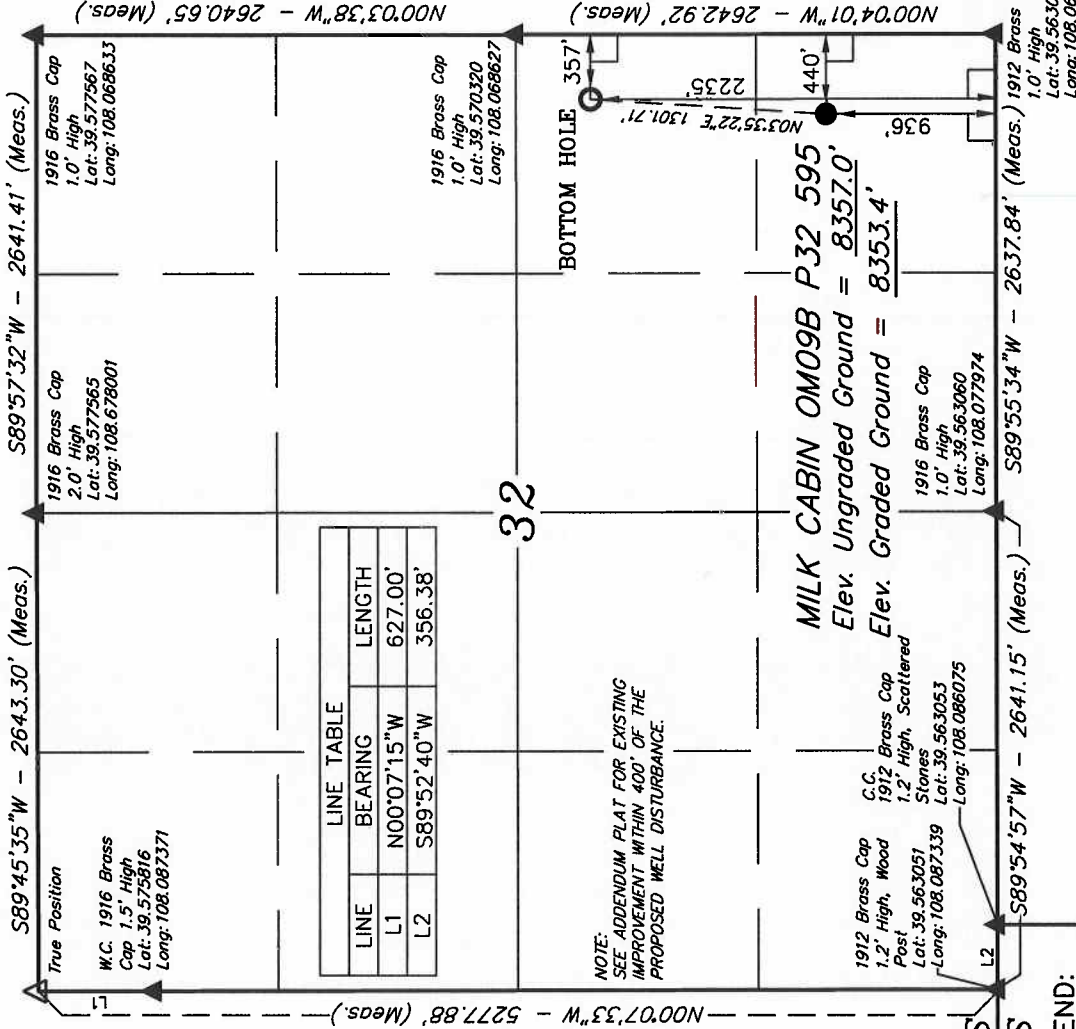
▲ = SECTION CORNERS LOCATED.

△ = SECTION CORNERS RE-ESTAB.

BY SINGLE PROPORTION METHOD.

L = 90° SYMBOL

LEGEND:





BERRY PETROLEUM COMPANY

T5S, R95W, 6th P.M.

Well location, MILK CABIN OM09C P32 595, located as shown in the SE 1/4 SE 1/4 of Section 32, T5S, R95W, 6th P.M., Garfield County, Colorado.

BASIS OF ELEVATION

SPOT ELEVATION AT THE NORTHWEST CORNER OF SECTION 30, T5S, R95W, 6th P.M. TAKEN FROM THE FORKED GULCH QUADRANGLE, COLORADO, GARFIELD COUNTY, 7.5 MINUTE SERIES (TOPOGRAPHICAL MAP) PUBLISHED BY THE UNITED STATES DEPARTMENT OF THE INTERIOR, GEOLOGICAL SURVEY. SAID ELEVATION IS MARKED AS BEING 5966 FEET.

BASIS OF BEARINGS

BASIS OF BEARINGS IS A G.P.S. OBSERVATION.

Sheet 1d of 12



SCALE

CERTIFICATE

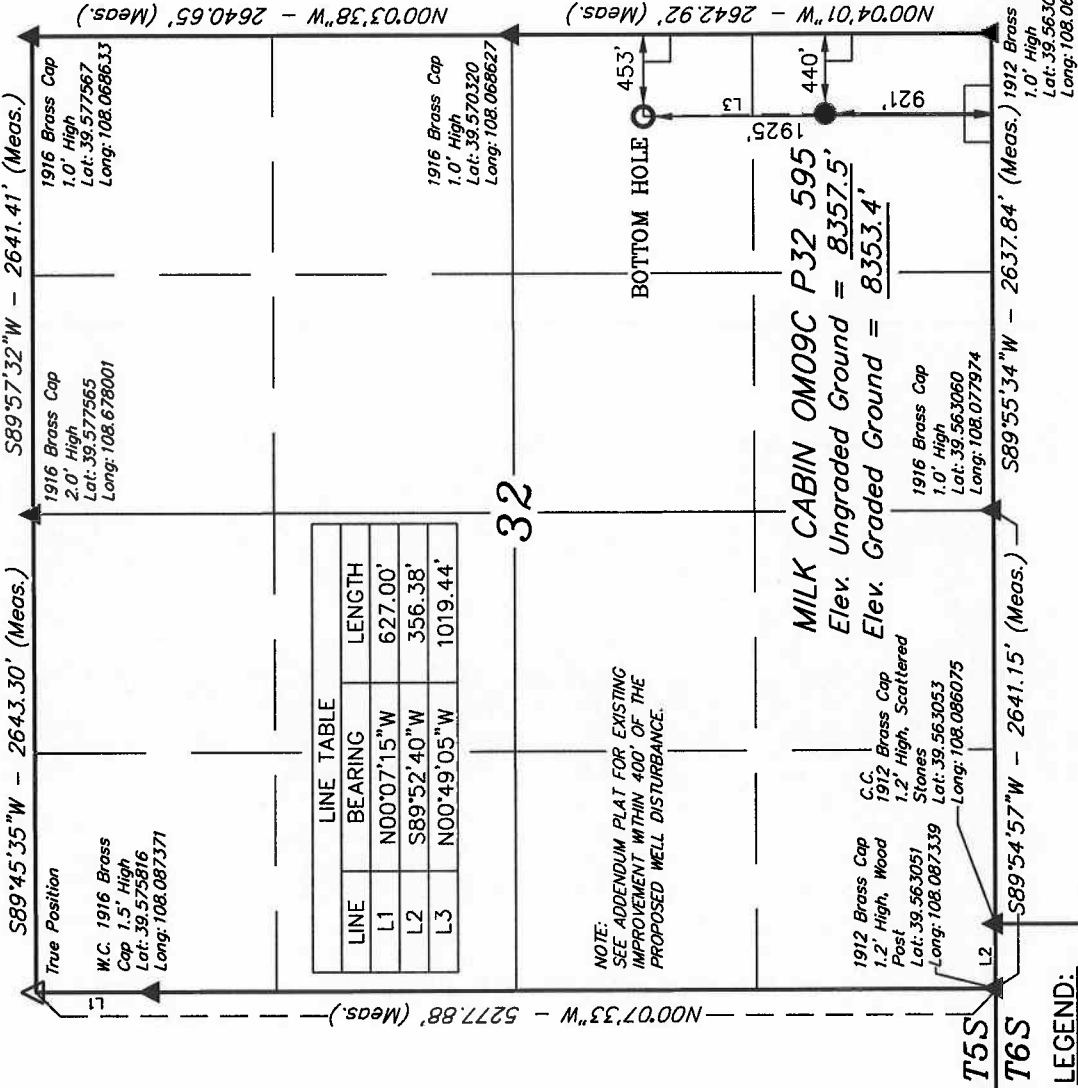
THIS IS TO CERTIFY THAT THE ABOVE PLAT WAS PREPARED FROM FIELD NOTES OF ACTUAL SURVEYS MADE BY ME OR UNDER MY SUPERVISION AND THAT THE SAME ARE TRUE AND CORRECT TO THE BEST OF MY KNOWLEDGE AND BELIEF.

Revised: 04-29-10 D.R.B.  
Revised: 03-23-09 D.R.B.  
Revised: 02-20-09 D.R.B.  
Revised: 02-10-09 D.R.B.

REGISTERED LAND SURVEYOR  
STATE OF COLORADO

UTAH ENGINEERING & LAND SURVEYING  
85 SOUTH 200 EAST - VERNAL, UTAH 84078  
(435) 789-1017

SCALE	1" = 1000'	DATE SURVEYED:	08-31-06	DATE DRAWN:	09-12-06
PARTY	G.O. B.S. D.R.B.	REFERENCES	G.L.O. PLAT		
WEATHER	WARM	FILE	BERRY PETROLEUM COMPANY		



LINE TABLE		
LINE	BEARING	LENGTH
L1	N00°07'15"W	627.00'
L2	S89°52'40"W	356.38'
L3	N00°49'05"W	1019.44'

NOTE:  
SEE ADDENDUM PLAT FOR EXISTING  
IMPROVEMENT WITHIN 400' OF THE  
PROPOSED WELL DISTURBANCE.

LEGEND:

- 90° SYMBOL
- PROPOSED WELL HEAD.
- SECTION CORNERS LOCATED.
- SECTION CORNERS RE-ESTAB.
- BY SINGLE PROPORTION METHOD.

BERRY PETROLEUM COMPANY

T5S, R95W, 6th P.M.

Well location, MILK CABIN OM09D P32 595, located as shown in the SE 1/4 SE 1/4 of Section 32, T5S, R95W, 6th P.M., Garfield County, Colorado.

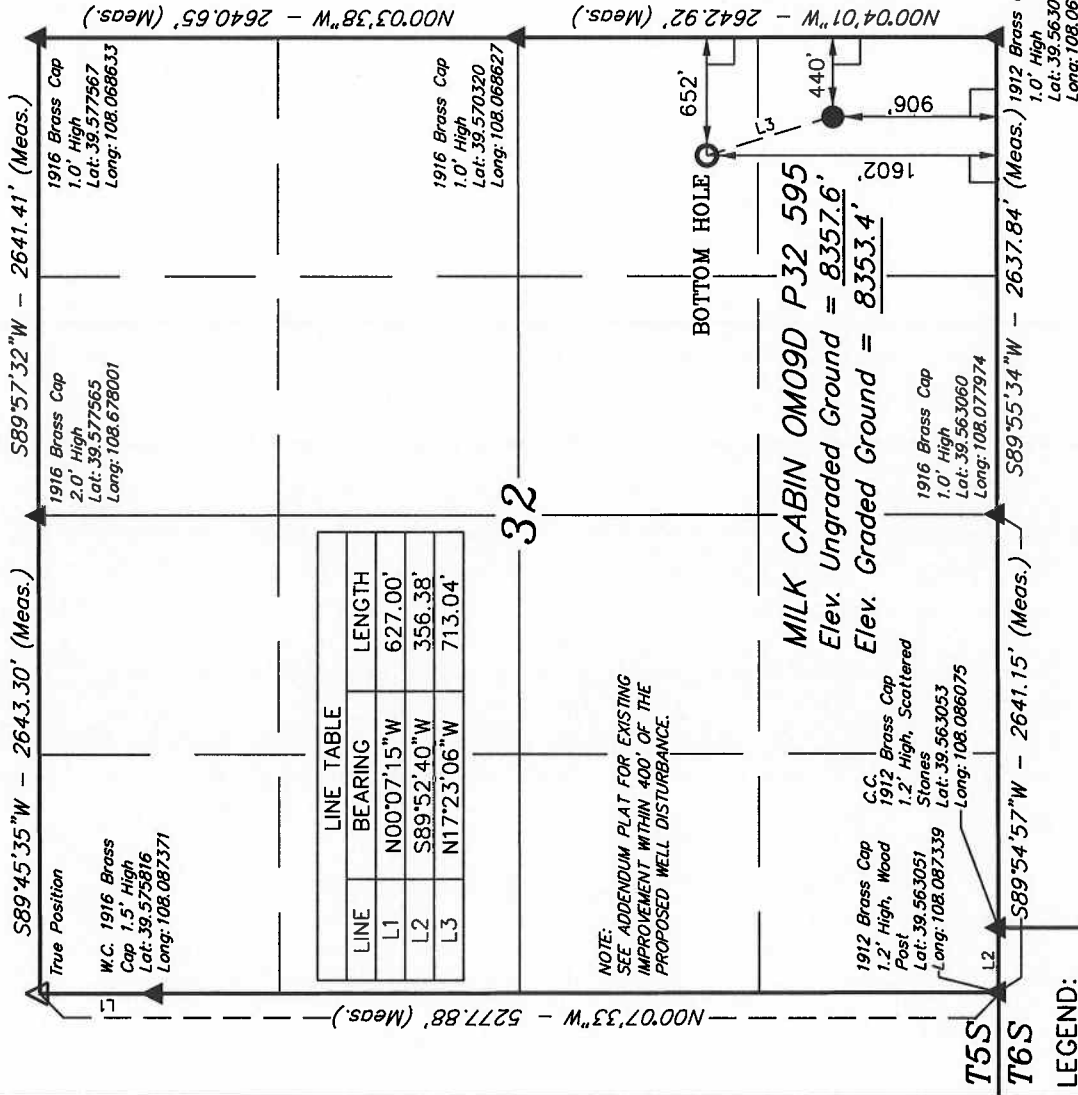
BASIS OF ELEVATION

SPOT ELEVATION AT THE NORTHWEST CORNER OF SECTION 30, T5S, R95W, 6th P.M. TAKEN FROM THE FORKED GULCH QUADRANGLE, COLORADO, GARFIELD COUNTY, 7.5 MINUTE SERIES (TOPOGRAPHICAL MAP) PUBLISHED BY THE UNITED STATES DEPARTMENT OF THE INTERIOR, GEOLOGICAL SURVEY. SAID ELEVATION IS MARKED AS BEING 5966 FEET.

BASIS OF BEARINGS

BASIS OF BEARINGS IS A G.P.S. OBSERVATION.

Sheet 1e of 12



SCALE

CERTIFICATE

THIS IS TO CERTIFY THAT THE ABOVE PLAT WAS PREPARED FROM FIELD NOTES OF ACTUAL SURVEYS AND BY MEANS OF UNDERMY SUPERVISION AND THAT THE SAME ARE TRUE AND CORRECT TO THE BEST OF MY KNOWLEDGE AND BELIEF.

Revised: 04-29-10 D.R.B.  
Revised: 03-23-09 D.R.B.  
Revised: 02-20-09 D.R.B.  
Revised: 02-13-09 D.R.B.  
Revised: 02-10-09 D.R.B.

UNTAH ENGINEERING & LAND SURVEYING

85 SOUTH 200 EAST - VERNAL, UTAH 84078  
(435) 789-1017

SCALE 1" = 1000'	DATE SURVEYED: 08-31-06	DATE DRAWN: 09-12-06
PARTY G.O. B.S. D.R.B.	REFERENCES G.L.O. PLAT	
WEATHER WARM	FILE	
		BERRY PETROLEUM COMPANY

LEGEND:

- 90° SYMBOL
- PROPOSED WELL HEAD.
- SECTION CORNERS LOCATED.
- SECTION CORNERS RE-ESTAB.
- BY SINGLE PROPORTION METHOD.

NAD 83 (TARGET BOTTOM HOLE)	NAD 83 (SURFACE LOCATION)
LATITUDE = 39°34'02.86" (39.567461) LONGITUDE = 108°04'15.38" (108.070939)	LATITUDE = 39°33'55.99" (39.565553) LONGITUDE = 108°04'12.66" (108.070183)
NAD 27 (TARGET BOTTOM HOLE)	NAD 27 (SURFACE LOCATION)
LATITUDE = 39°34'02.94" (39.567483) LONGITUDE = 108°04'13.10" (108.070308)	LATITUDE = 39°33'56.07" (39.565575) LONGITUDE = 108°04'10.38" (108.069550)

BERRY PETROLEUM COMPANY

T5S, R95W, 6th P.M.

Well location, MILK CABIN OM13B P32 595 (SURFACE LOCATION), located as shown in the SE 1/4 SE 1/4 of Section 32, T5S, R95W, 6th P.M., Garfield County, Colorado.

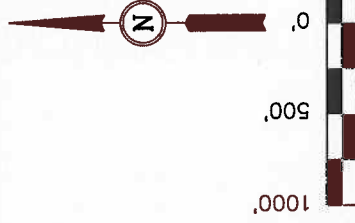
BASIS OF ELEVATION

SPOT ELEVATION AT THE NORTHWEST CORNER OF SECTION 30, T5S, R95W, 6th P.M. TAKEN FROM THE FORKED GULCH QUADRANGLE, COLORADO, GARFIELD COUNTY, 7.5 MINUTE SERIES (TOPOGRAPHICAL MAP) PUBLISHED BY THE UNITED STATES DEPARTMENT OF THE INTERIOR, GEOLOGICAL SURVEY. SAID ELEVATION IS MARKED AS BEING 5966 FEET.

BASIS OF BEARINGS

BASIS OF BEARINGS IS A G.P.S. OBSERVATION.

Sheet 1 f of 12



SCALE

CERTIFICATE

THIS IS TO CERTIFY THAT THE ABOVE PLAT WAS PREPARED FROM FIELD NOTES OF ACTUAL SURVEYS MADE BY ME OR UNDER MY SUPERVISION AND THAT THE SAME ARE TRUE AND CORRECT TO THE BEST OF MY KNOWLEDGE AND BELIEF.

Revised: 04-29-10 D.R.B.

Revised: 03-23-09 D.R.B.

Revised: 02-20-09 D.R.B.

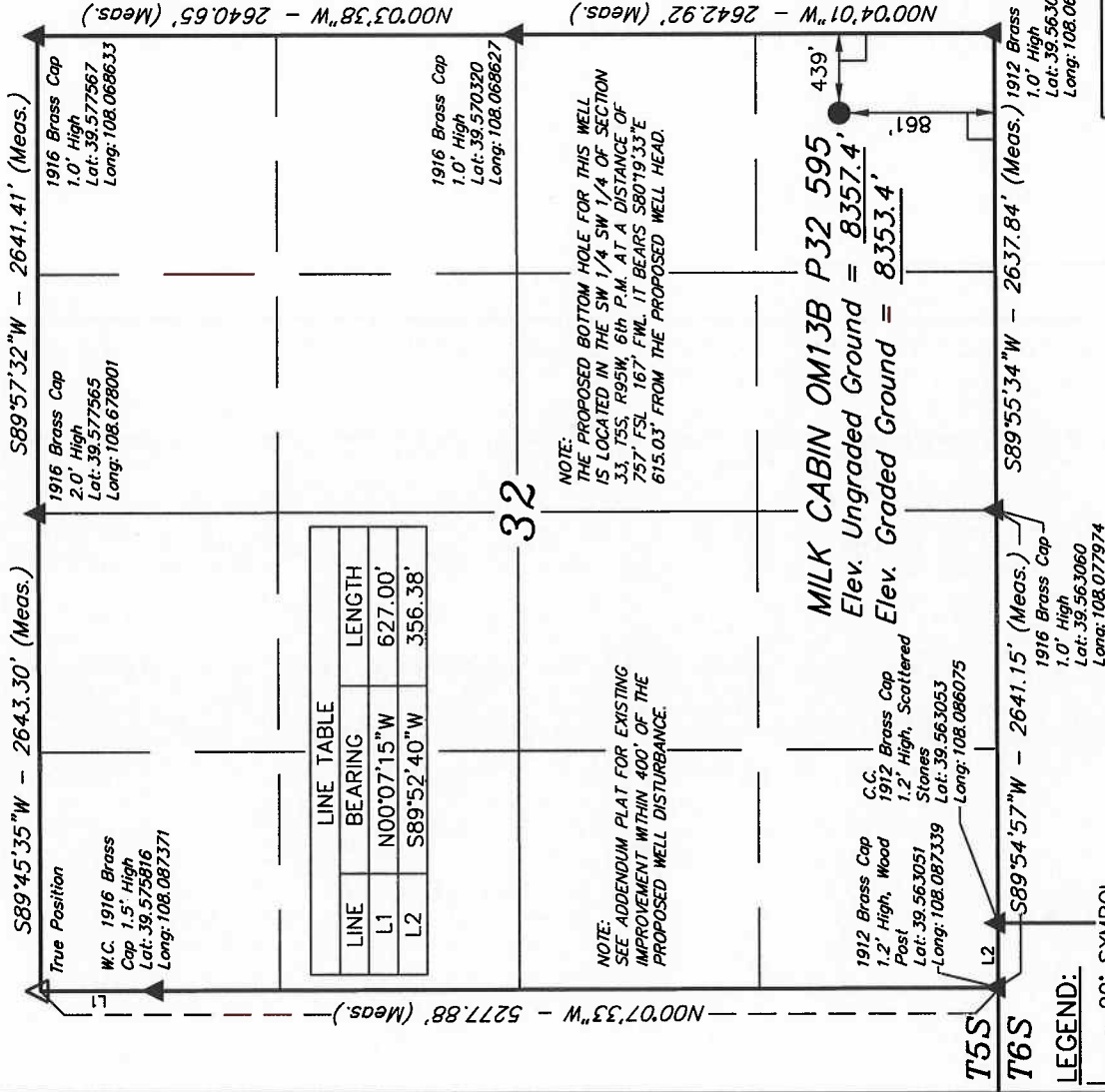
Revised: 02-10-09 D.R.B.

UNTAH ENGINEERING & LAND SURVEYING

85 SOUTH 200 EAST - VERNAL, UTAH 84078

(435) 789-1017

SCALE	1" = 1000'	DATE SURVEYED:	08-31-06	DATE DRAWN:	09-12-06
PARTY	G.O. B.S. D.R.B.	REFERENCES	G.L.O. PLAT		
WEATHER	WARM	FILE	BERRY PETROLEUM COMPANY		



NAD 83 (SURFACE LOCATION)	
LATITUDE = 39°33'55.54"	(39.565428)
LONGITUDE = 108°04'12.64"	(108.070178)
NAD 27 (SURFACE LOCATION)	
LATITUDE = 39°33'55.62"	(39.565450)
LONGITUDE = 108°04'10.37"	(108.069547)



# BERRY PETROLEUM COMPANY

T5S, R95W, 6th P.M.

Well location, MILK CABIN OM13B P32 595 (TARGET BOTTOM HOLE), located as shown in the SW 1/4 SW 1/4 of Section 33, T5S, R95W, 6th P.M., Garfield County, Colorado.

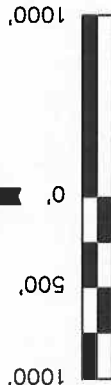
## BASIS OF ELEVATION

SPOT ELEVATION AT THE NORTHWEST CORNER OF SECTION 30, T5S, R95W, 6th P.M. TAKEN FROM THE FORKED GULCH QUADRANGLE, COLORADO, GARFIELD COUNTY, 7.5 MINUTE SERIES (TOPOGRAPHICAL MAP) PUBLISHED BY THE UNITED STATES DEPARTMENT OF THE INTERIOR, GEOLOGICAL SURVEY. SAID ELEVATION IS MARKED AS BEING 5966 FEET.

## BASIS OF BEARINGS

BASIS OF BEARINGS IS A G.P.S. OBSERVATION.

Sheet 1g of 12



SCALE

## CERTIFICATE

THIS IS TO CERTIFY THAT THE ABOVE PLAT WAS PREPARED FROM FIELD NOTES OF ACTUAL SURVEYS MADE BY ME OR UNDER MY SUPERVISION AND THAT THE SAME ARE TRUE AND CORRECT TO THE BEST OF MY KNOWLEDGE AND BELIEF.

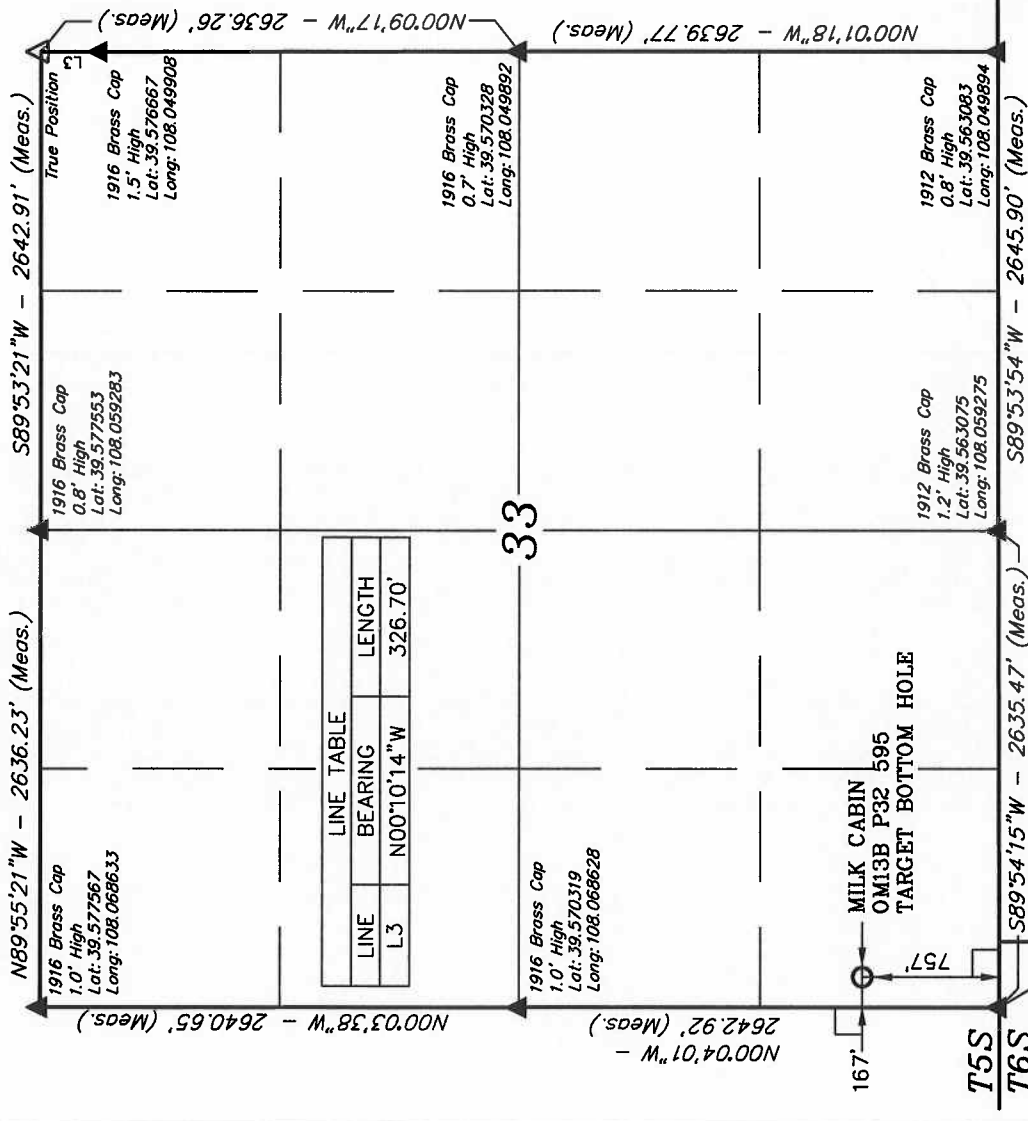
REGISTERED LAND SURVEYOR  
STATE OF COLORADO  
REGISTRATION NO. 17492  
J. L. BERRY

Revised: 03-23-09 D.R.B.

## UNTAH ENGINEERING & LAND SURVEYING

85 SOUTH 200 EAST - VERNAL, UTAH 84078  
(435) 789-1017

SCALE 1" = 1000'	DATE SURVEYED: 08-31-06	DATE DRAWN: 02-10-09
PARTY G.O. B.S. D.R.B.	REFERENCES G.L.O. PLAT	
WEATHER WARM	FILE	
		BERRY PETROLEUM COMPANY



NAD 83 (TARGET BOTTOM HOLE)
LATITUDE = 39°33'54.52" (39.565144)
LONGITUDE = 108°04'04.91" (108.068031)
NAD 27 (TARGET BOTTOM HOLE)
LATITUDE = 39°33'54.60" (39.565167)
LONGITUDE = 108°04'02.63" (108.067397)



# BERRY PETROLEUM COMPANY

Well location, MILK CABIN OM16A P32 595, located as shown in the SE 1/4 SE 1/4 of Section 32, T5S, R95W, 6th P.M., Garfield County, Colorado.

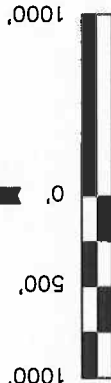
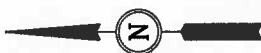
## BASIS OF ELEVATION

SPOT ELEVATION AT THE NORTHWEST CORNER OF SECTION 30, T5S, R95W, 6th P.M. TAKEN FROM THE FORKED GULCH QUADRANGLE, COLORADO, GARFIELD COUNTY, 7.5 MINUTE SERIES (TOPOGRAPHICAL MAP) PUBLISHED BY THE UNITED STATES DEPARTMENT OF THE INTERIOR, GEOLOGICAL SURVEY. SAID ELEVATION IS MARKED AS BEING 5966 FEET.

## BASIS OF BEARINGS

BASIS OF BEARINGS IS A G.P.S. OBSERVATION.

Sheet 1h of 12



SCALE

## CERTIFICATE

THIS IS TO CERTIFY THAT THE ABOVE PLAT WAS PREPARED FROM FIELD NOTES OF ACTUAL SURVEYS MADE BY ME OR UNDER MY SUPERVISION AND THAT THE SAME ARE TRUE AND CORRECT TO THE BEST OF MY KNOWLEDGE AND BELIEF.

Revised: 04-29-10 D.R.B.  
Revised: 03-23-09 D.R.B.  
Revised: 02-20-09 D.R.B.  
Revised: 02-10-09 D.R.B.

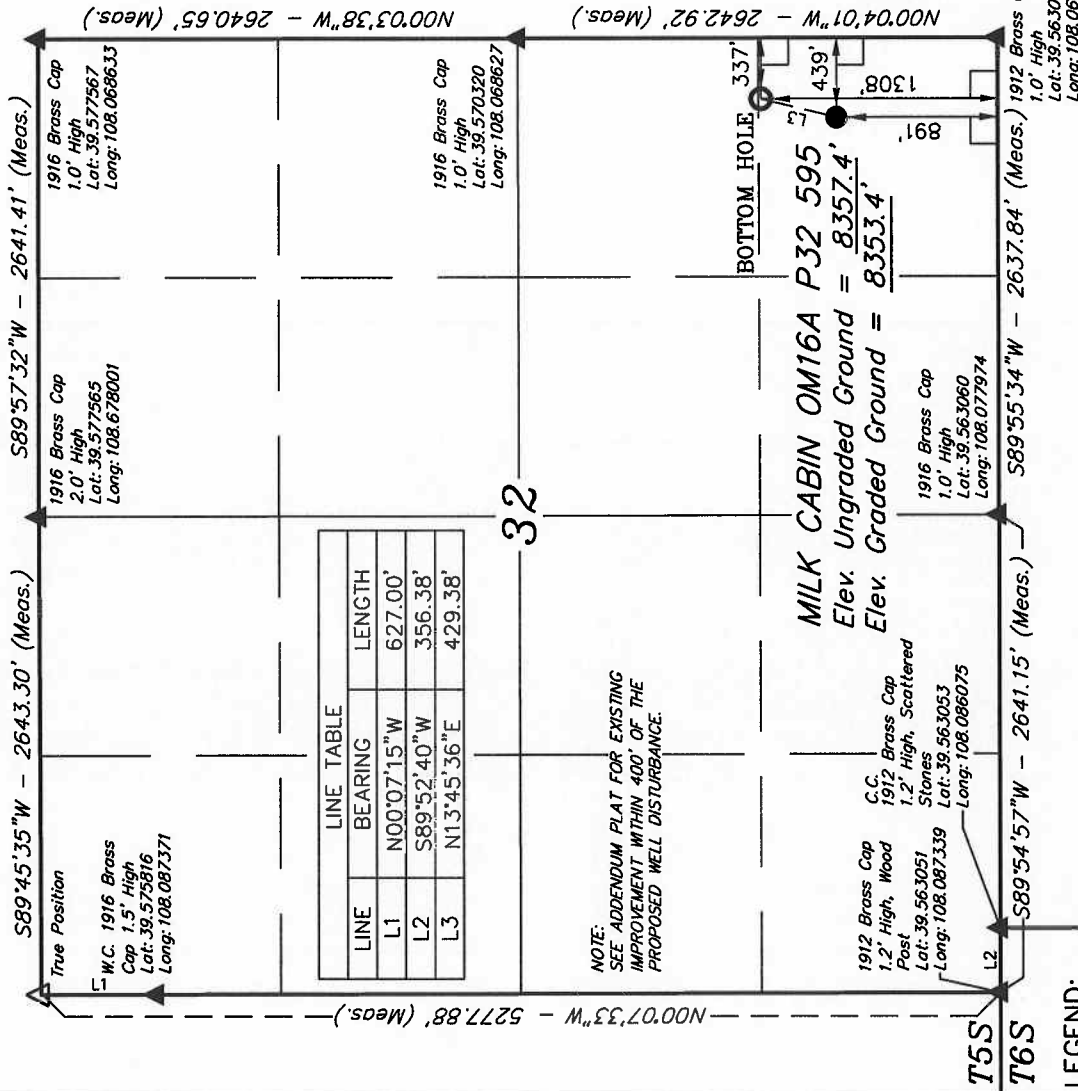
REGISTERED LAND SURVEYOR  
REGISTRATION NO. 17492  
STATE OF COLORADO

## UINTAH ENGINEERING & LAND SURVEYING

85 SOUTH 200 EAST - VERNAL, UTAH 84078  
(435) 789-1017

SCALE	1" = 1000'	DATE SURVEYED:	08-31-06	DATE DRAWN:	09-12-06
PARTY	G.O. B.S. D.R.B.	REFERENCES	G.L.O. PLAT		
WEATHER	WARM	FILE	BERRY PETROLEUM COMPANY		

T5S, R95W, 6th P.M.



LINE TABLE		
LINE	BEARING	LENGTH
L1	N00°07'15"W	627.00'
L2	S89°52'40"W	356.38'
L3	N13°45'36"E	429.38'

NOTE:  
SEE ADDENDUM PLAT FOR EXISTING IMPROVEMENT WITHIN 400' OF THE PROPOSED WELL DISTURBANCE.

## LEGEND:

- = 90° SYMBOL
- = PROPOSED WELL HEAD.
- ▲ = SECTION CORNERS LOCATED.
- △ = SECTION CORNERS RE-ESTAB.
- BY SINGLE PROPORTION METHOD.

NAD 83 (TARGET BOTTOM HOLE)		NAD 83 (SURFACE LOCATION)	
LATITUDE = 39°33'59.96"	LONGITUDE = 108°04'11.35"	LATITUDE = 39°33'55.84"	LONGITUDE = 108°04'12.65"
LATITUDE = 39°34'00.04"	LONGITUDE = 108°04'09.07"	LATITUDE = 39°33'55.92"	LONGITUDE = 108°04'10.38"

PDOP = 2.6

# BERRY PETROLEUM COMPANY

T5S, R95W, 6th P.M.

Well location, MILK CABIN OM16B P32 595, located as shown in the SE 1/4 SE 1/4 of Section 32, T5S, R95W, 6th P.M., Garfield County, Colorado.

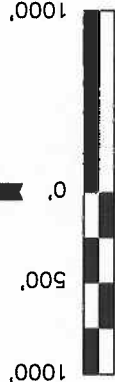
## BASIS OF ELEVATION

SPOT ELEVATION AT THE NORTHWEST CORNER OF SECTION 30, T5S, R95W, 6th P.M. TAKEN FROM THE FORKED GULCH QUADRANGLE, COLORADO, GARFIELD COUNTY, 7.5 MINUTE SERIES (TOPOGRAPHICAL MAP) PUBLISHED BY THE UNITED STATES DEPARTMENT OF THE INTERIOR, GEOLOGICAL SURVEY. SAID ELEVATION IS MARKED AS BEING 5966 FEET.

## BASIS OF BEARINGS

BASIS OF BEARINGS IS A G.P.S. OBSERVATION.

Sheet 1i of 12



SCALE

## CERTIFICATE

THIS IS TO CERTIFY THAT THE ABOVE PLAT WAS PREPARED FROM FIELD NOTES OF ACTUAL SURVEYS MADE BY ME OR UNDER MY SUPERVISION AND THAT THE SAME ARE TRUE AND CORRECT TO THE BEST OF MY KNOWLEDGE AND BELIEF.

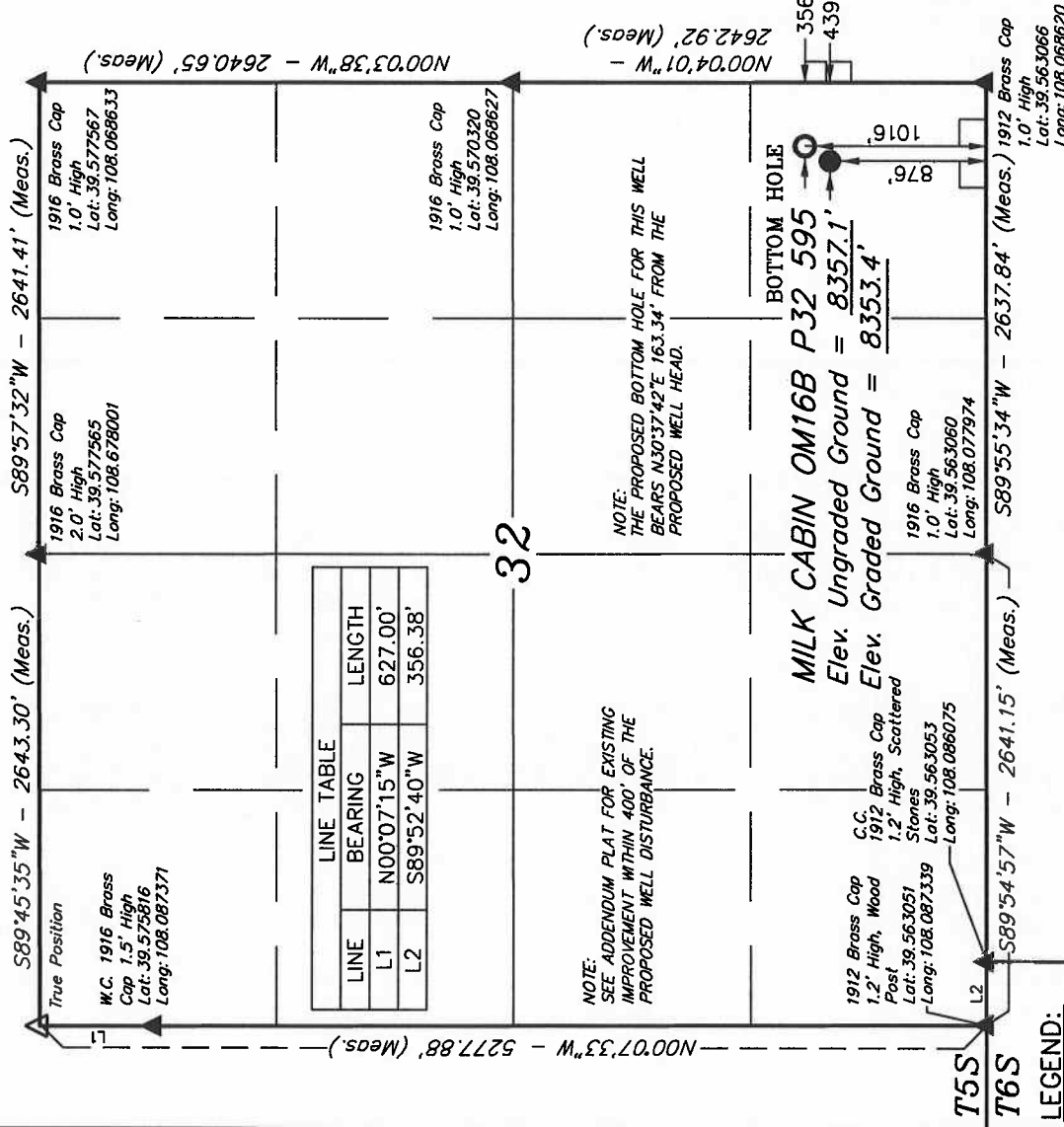
Revised: 04-29-10 D.R.B.  
Revised: 03-23-09 D.R.B.  
Revised: 02-20-09 D.R.B.  
Revised: 02-10-09 D.R.B.

REGISTERED LAND SURVEYOR  
RECEIVED FOR REGISTRATION  
STATE OF COLORADO

## UTAH ENGINEERING & LAND SURVEYING

85 SOUTH 200 EAST - VERNAL, UTAH 84078  
(435) 789-1017

SCALE 1" = 1000'	DATE SURVEYED: 08-31-06	DATE DRAWN: 09-12-06
PARTY G.O. B.S. D.R.B.	REFERENCES G.L.O. PLAT	
WEATHER WARM	FILE	
		BERRY PETROLEUM COMPANY



NAD 83 (TARGET BOTTOM HOLE)	NAD 83 (SURFACE LOCATION)
LATITUDE = 39°33'57.08" (39.565856)	LATITUDE = 39°33'55.69" (39.565469)
LONGITUDE = 108°04'11.59" (108.069886)	LONGITUDE = 108°04'12.65" (108.070181)
NAD 27 (TARGET BOTTOM HOLE)	NAD 27 (SURFACE LOCATION)
LATITUDE = 39°33'57.16" (39.565878)	LATITUDE = 39°33'55.77" (39.565492)
LONGITUDE = 108°04'09.31" (108.069253)	LONGITUDE = 108°04'10.37" (108.069547)

*T5S, R95W, 6th P.M.*

Well location, MILK CABIN OM16D P32 595, located as shown in the SE 1/4 SE 1/4 of Section 32, T5S, R95W, 6th P.M., Garfield County, Colorado.

## BASIS OF ELEVATION

SPOT ELEVATION AT THE NORTHWEST CORNER OF SECTION 30, T5S, R95W, 6th P.M. TAKEN FROM THE FORKED GULCH QUADRANGLE, COLORADO, GARFIELD COUNTY, 7.5 MINUTE SERIES (TOPOGRAPHICAL MAP) PUBLISHED BY THE UNITED STATES DEPARTMENT OF THE INTERIOR, GEOLOGICAL SURVEY. SAID ELEVATION IS MARKED AS BEING 5966 FEET.

## BASIS OF BEARINGS

BASIS OF BEARINGS IS A G.P.S. OBSERVATION.

Sheet 1j of 12



SCALE

CERTIFICATE

THIS IS TO CERTIFY THAT THE ABOVE PLAT WAS PREPARED FROM FIELD NOTES OF ACTUAL SURVEYS MADE BY ME OR UNDER MY SUPERVISION AND THAT THE SAME ARE TRUE AND CORRECT TO THE BEST OF MY KNOWLEDGE AND BELIEF.

Revised: 04-29-10 D.R.B.

Revised: 03-23-09 D.R.B.

Revised: 02-20-09 D.R.B.

Revised: 02-20-09 D.R.B.  
Revised: 02-10-09 D.R.B.

## UNTAH ENGINEERING &amp; LAND SURVEYING

85 SOUTH 200 EAST - VERNAL, UTAH 84078  
(435) 789-1017

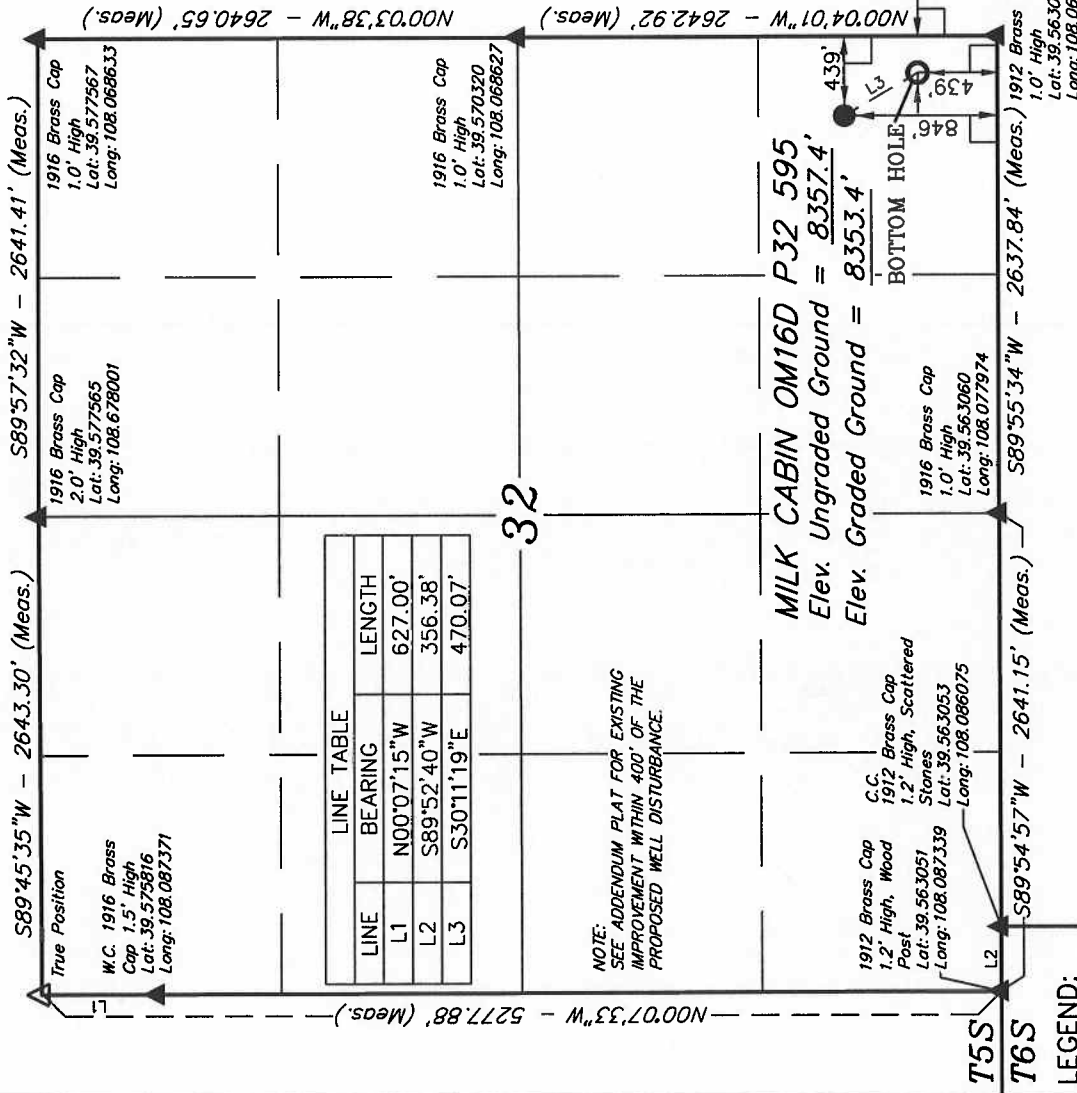
SCALE 1" = 1000'

DATE SURVEYED:	DATE DRAWN:
08-31-06	09-12-06

PARTY	REFERENCES
GO	BS
	DRB
	GIO
	PLAT

WEATHER	FILE
---------	------

BERRY PETROLEUM COMPANY



**NOTE:**  
SEE ADDENDUM PLAT FOR EXISTING  
IMPROVEMENT WITHIN 400' OF THE  
PROPOSED WELL DISTURBANCE.

LEGEND:

$\angle = 90^\circ$  SYMBOL

● = PROPOSED WELL HEAD.

▲ = SECTION CORNERS LOCATED.

$\Delta$  = SECTION CORNERS RE-ESTABLISHED

BY SINGLE PROPORTION METHOD

NAD 83 (TARGET BOTTOM HOLE)		NAD 83 (SURFACE LOCATION)	
LATITUDE = 39°33'51.38"	(39.564272)	LATITUDE = 39°33'55.39"	(39.565386)
LONGITUDE = 108°03'09.63"	(108.069342)	LONGITUDE = 108°04'12.64"	(108.070178)
NAD 27 (TARGET BOTTOM HOLE)		NAD 27 (SURFACE LOCATION)	
LATITUDE = 39°33'51.46"	(39.564294)	LATITUDE = 39°33'55.48"	(39.585411)
LONGITUDE = 108°03'07.35"	(108.068708)	LONGITUDE = 108°04'10.37"	(108.069547)