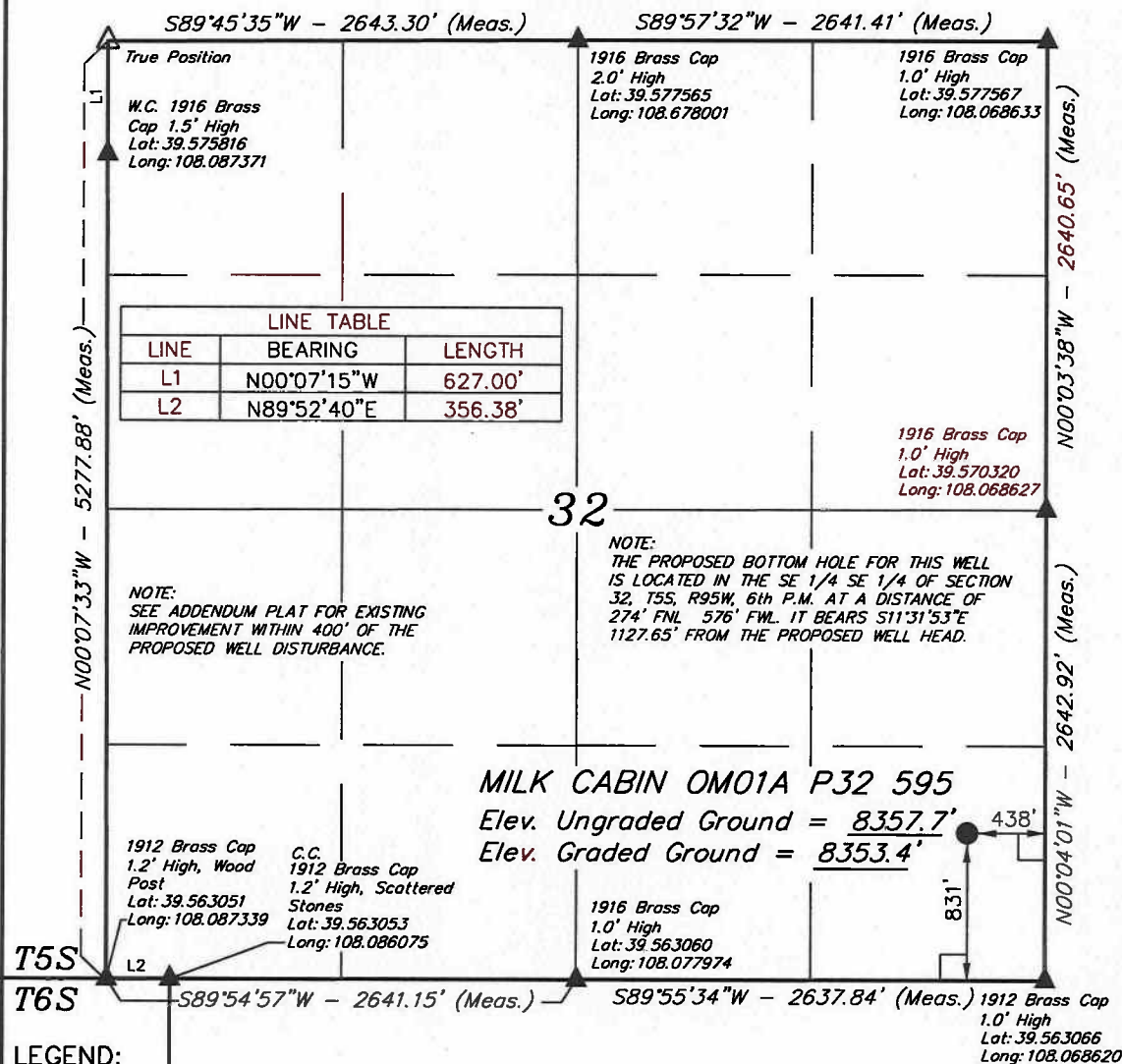


T5S, R95W, 6th P.M.



**LEGEND:**

- └─ = 90° SYMBOL
- = PROPOSED WELL HEAD.
- ▲ = SECTION CORNERS LOCATED.
- △ = SECTION CORNERS RE-ESTAB. BY SINGLE PROPORTION METHOD.

PDOP = 2.7

NAD 83 (SURFACE LOCATION)	
LATITUDE = 39°33'55.25" (39.565347)	
LONGITUDE = 108°04'12.64" (108.070178)	
NAD 27 (SURFACE LOCATION)	
LATITUDE = 39°33'55.33" (39.565369)	
LONGITUDE = 108°04'10.36" (108.069544)	

**BERRY PETROLEUM COMPANY**

Well location, MILK CABIN OM01A P32 595 (SURFACE LOCATION), located as shown in the SE 1/4 SE 1/4 of Section 32, T5S, R95W, 6th P.M., Garfield County, Colorado.

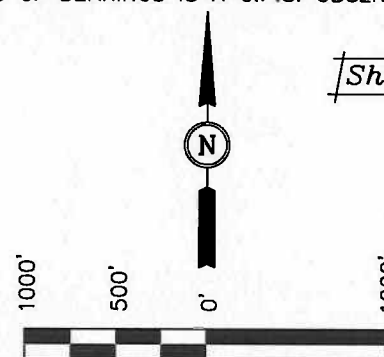
**BASIS OF ELEVATION**

SPOT ELEVATION AT THE NORTHWEST CORNER OF SECTION 30, T5S, R95W, 6th P.M. TAKEN FROM THE FORKED GULCH QUADRANGLE, COLORADO, GARFIELD COUNTY, 7.5 MINUTE SERIES (TOPOGRAPHICAL MAP) PUBLISHED BY THE UNITED STATES DEPARTMENT OF THE INTERIOR, GEOLOGICAL SURVEY. SAID ELEVATION IS MARKED AS BEING 5966 FEET.

**BASIS OF BEARINGS**

BASIS OF BEARINGS IS A G.P.S. OBSERVATION.

Sheet 1a of 12



SCALE

**CERTIFICATE**

THIS IS TO CERTIFY THAT THE ABOVE PLAT WAS PREPARED FROM FIELD NOTES OF ACTUAL SURVEYS MADE BY ME OR UNDER MY SUPERVISION AND THAT THE SAME ARE TRUE AND CORRECT TO THE BEST OF MY KNOWLEDGE AND BELIEF.

Revised: 04-29-10 D.R.B.  
Revised: 03-23-09 D.R.B.  
Revised: 02-20-09 D.R.B.  
Revised: 02-10-09 D.R.B.

REGISTERED LAND SURVEYOR  
REGISTRATION NO. 1492  
STATE OF COLORADO

**UINTAH ENGINEERING & LAND SURVEYING**  
85 SOUTH 200 EAST - VERNAL, UTAH 84078  
(435) 789-1017

SCALE 1" = 1000'	DATE SURVEYED: 08-31-06	DATE DRAWN: 09-12-06
PARTY G.O. B.S. D.R.B.	REFERENCES G.L.O. PLAT	
WEATHER WARM	FILE BERRY PETROLEUM COMPANY	

