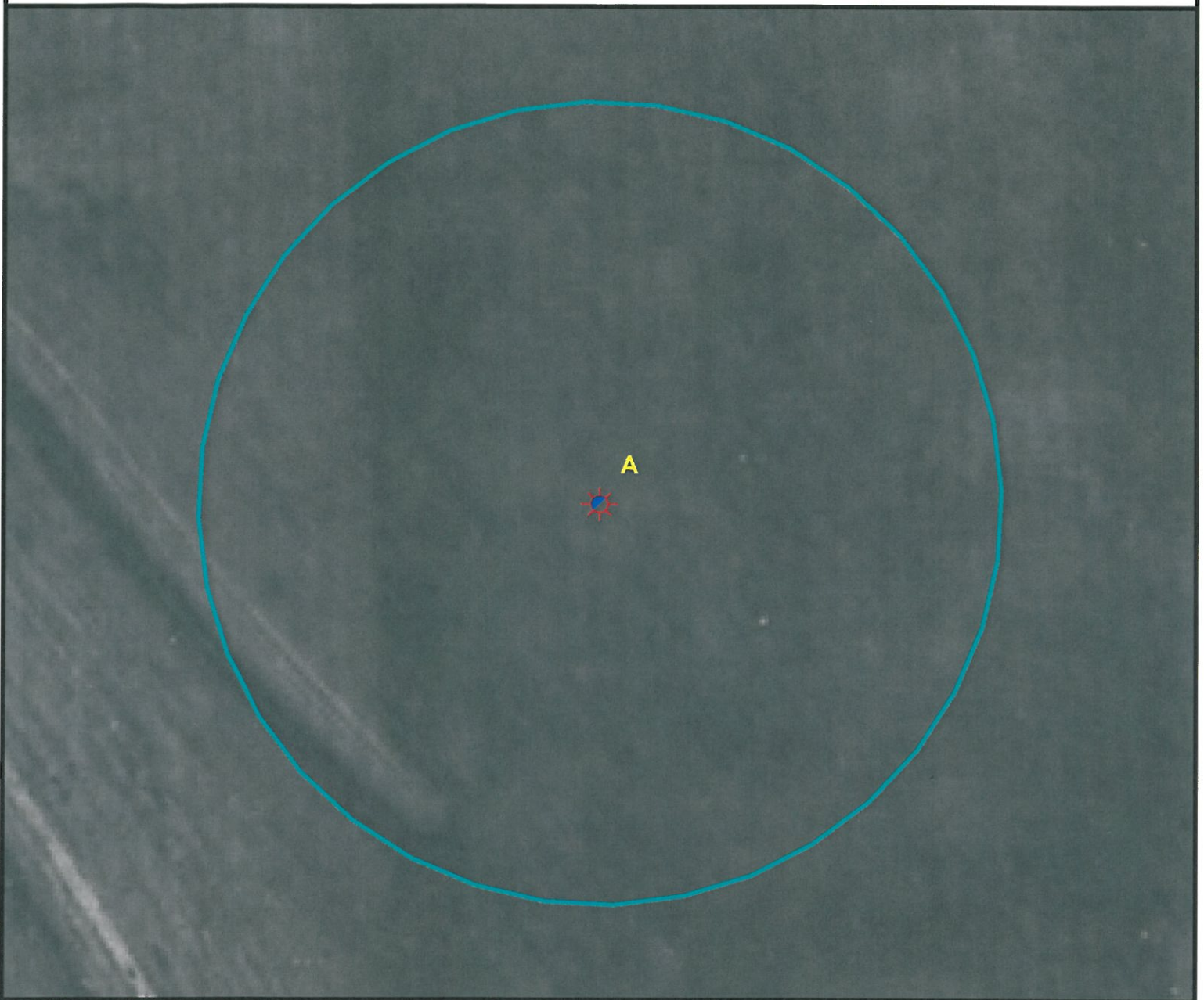


# Location Drawing



A. Proposed well SHEA 23-14.

There are no visible improvements within a 400' radius of the proposed oil and gas location.



## Legend

- |                      |                       |
|----------------------|-----------------------|
| Proposed Well        | Building/Residence    |
| Existing Well        | Oil & Gas Equipment   |
| Water Well           | Water Body            |
| Pedestal             | Utility Box           |
| CattleGuard/Gate     | Railroad              |
| Bridge               | Fence                 |
| ECD                  | Overhead Power Line   |
| 400' Radius          | Pipeline              |
| Facilities Enclosure | Private Road          |
|                      | Public Road           |
|                      | Concrete Walled Ditch |

## 400ft Radius Map

# SHEA 23-14

Surface Location: T1S 44W S23  
Description of surface uses : CRP

Field Date: 05/20/2010  
Drawing Date: 05/23/2010  
Drafter: DMM  
Checked By: BHF

Aerial Photo supplied by NAIP (2009)

Prepared for:  
**Rosetta Resources**  
Operating LP  
717 Texas Avenue, Ste. 2800  
Houston, TX 77002



Use our resources to find yours!  
[www.petro-fs.com](http://www.petro-fs.com)

1801 W. 13th Ave Suite 207  
Denver, CO 80204  
(303) 928-7128  
111 E. Third Street  
Rifle, CO 81650  
(970) 625-4740