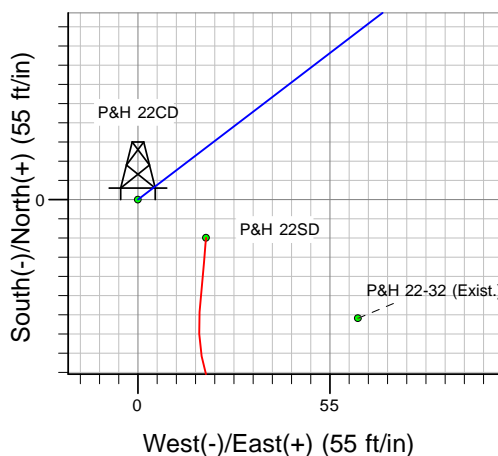
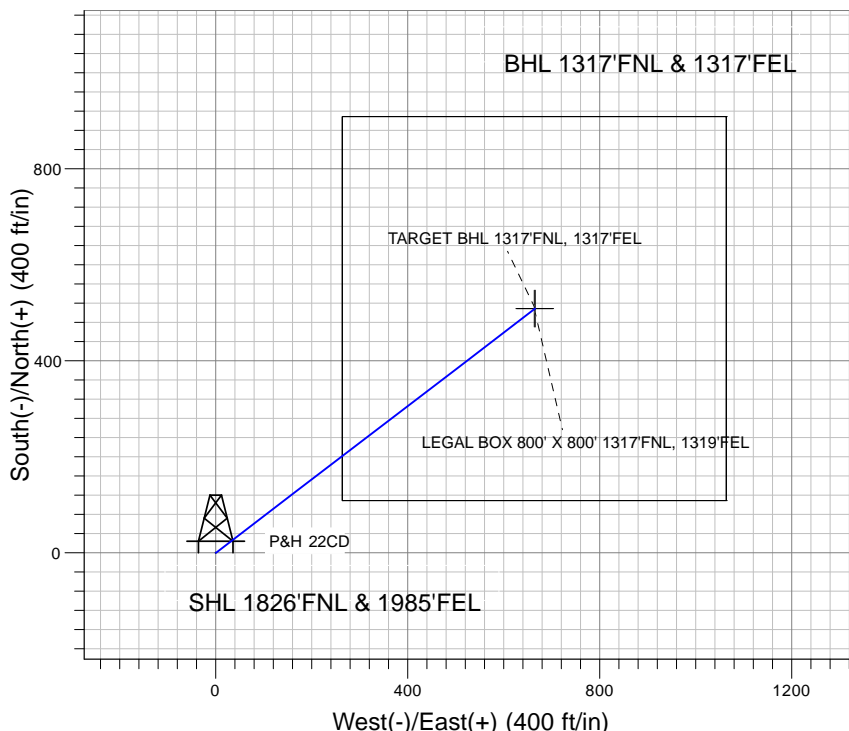
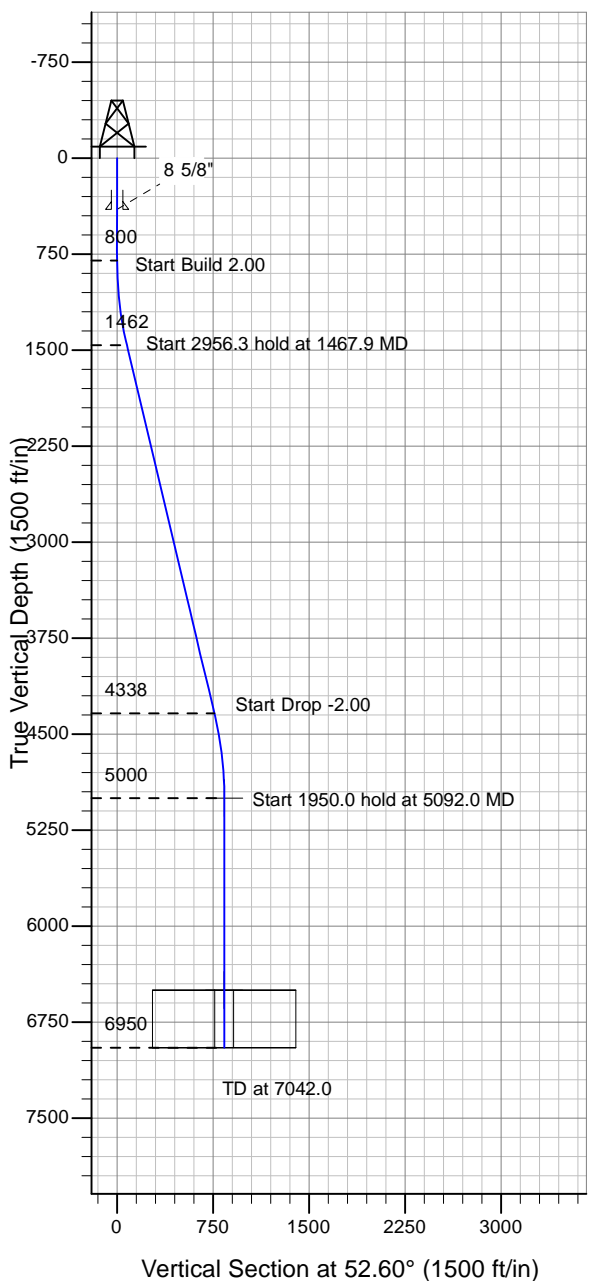


### Well Name: P&H 22CD

Surface Location: P&H 22CD Pad Sec.22-T5N-R64W  
 North American Datum 1983 , US State Plane 1983 , Colorado Northern Zone  
 Ground Elevation: 4600.0

+N/-S+E/-W Northing Easting Latitude Longitude Slot  
 0.0 0.01385324.41 3269215.05 40° 23' 13.524 N 104° 32' 0.744 W  
 Original Well Elev WELL @ 4613.0ft (Original Well Elev)

### PETROLEUM DEVELOPMENT CORP Weld County CO



P&H 22CD Pad Sec.22-T5N-R64W  
 P&H 22CD  
 Plan #1 (5-19-10)  
 18:23, May 19 2010



Azimuths to True North  
 Magnetic North: 8.88°

Magnetic Field  
 Strength: 53265.0snT  
 Dip Angle: 67.12°  
 Date: 5/19/2010  
 Model: IGRF2010

### WELLBORE TARGET DETAILS (LAT/LONG)

Name	TVD	+N/-S	+E/-W	Latitude	Longitude	Shape
TARGET BHL 1317'FNL, 1317'FEL	5000.0	509.0	665.7	40° 23' 18.553 N	104° 31' 52.141 W	Point
LEGAL BOX 800' X 800' 1317'FNL, 1319'FEL	6500.0	509.0	663.7	40° 23' 18.554 N	104° 31' 52.167 W	Rectangle (Sides: L800.0 W800.0)

### SECTION DETAILS

Sec	MD	Inc	Azi	TVD	+N/-S	+E/-W	DLeg	TFace	VSec	Target
1	0.0	0.00	0.00	0.0	0.0	0.0	0.00	0.00	0.0	
2	800.0	0.00	0.00	800.0	0.0	0.0	0.00	0.00	0.0	
3	1467.9	13.36	52.60	1461.9	47.1	61.6	2.00	52.60	77.5	
4	4424.2	13.36	52.60	4338.1	461.9	604.1	0.00	0.00	760.5	
5	5092.0	0.00	0.00	5000.0	509.0	665.7	2.00	180.00	838.0	TARGET BHL 1317'FNL, 1317'FEL
6	7042.0	0.00	0.00	6950.0	509.0	665.7	0.00	0.00	838.0	