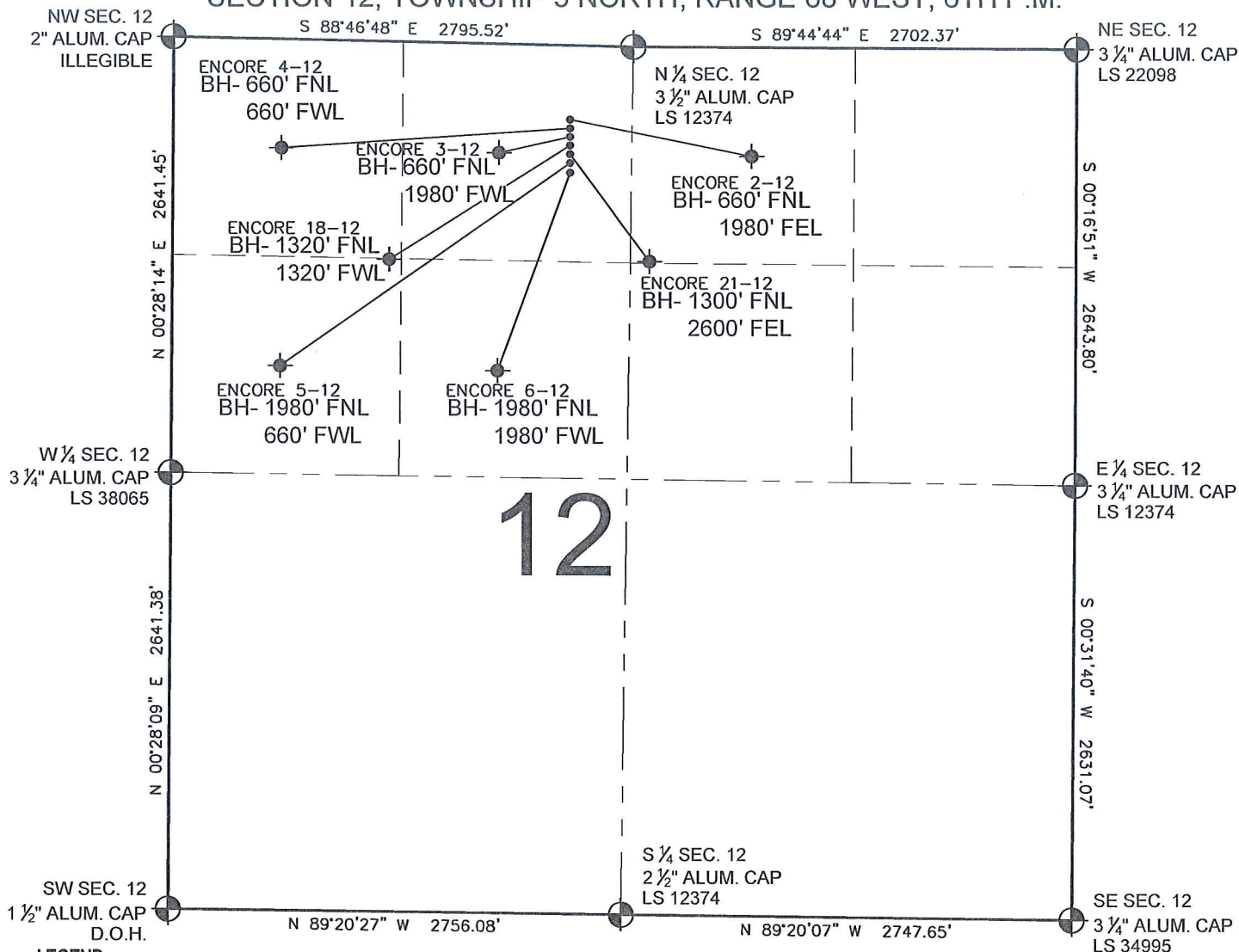


PAD DRAWING - ENCORE 7 PAD

SECTION 12, TOWNSHIP 5 NORTH, RANGE 68 WEST, 6TH P.M.



LEGEND

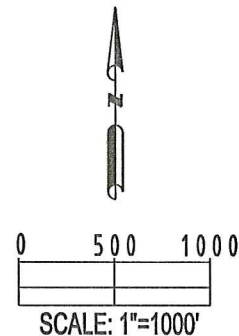
- = EXISTING MONUMENT
 = BOTTOM HOLE
 BH= BOTTOM HOLE
 = PROPOSED WELL
 = EXISTING WELL

NOTES:

- THIS SURVEY WAS DONE BY GPS METHODS AND CONFORMS TO THE MINIMUM STANDARDS SET BY THE C.O.G.C.C., RULE NO. 215 (PDOP VALUE IS LESS THAN 6.0, LATITUDE AND LONGITUDE ARE ACCURATE TO 5 DECIMAL PLACES, AND GPS OBSERVATIONS ARE DIFFERENTIAL AND DONE BY QUALIFIED PERSONNEL.)
- ELEVATIONS SHOWN AT THE WELL HEAD, AS WELL AS HORIZONTAL CONTROL, ARE BASED ON GPS-RTK VALUES DERIVED FROM DOING 2-HOUR STATIC GPS SESSIONS AND REDUCTIONS USING O.P.U.S. SOLUTIONS.
VERTICAL = NAVD88; HORIZONTAL = NAD83/92
- THE BEARINGS SHOWN HEREON ARE BASED ON GPS OBSERVATIONS BETWEEN THE MONUMENTS SHOWN HEREON AS FOUND ON THE FIELD DATE BELOW.
- DISTANCES SHOWN ARE AT GROUND LEVEL, AS MEASURED IN THE FIELD, WITH TIES TO WELLS MEASURED AT A PERPENDICULAR TO SECTION LINES.

NOTES:

- ENCORE 2-12 TO BE AT 480' FNL, 2410' FWL.
 BOTTOM HOLE AT 660' FNL & 1980' FEL.
 ENCORE 4-12 TO BE AT 490' FNL, 2410' FWL.
 BOTTOM HOLE AT 660' FNL & 660' FWL.
 ENCORE 3-12 TO BE AT 500' FNL, 2410' FWL.
 BOTTOM HOLE AT 660' FNL & 1980' FWL.
 ENCORE 18-12 TO BE AT 510' FNL, 2410' FWL.
 BOTTOM HOLE AT 1320' FNL & 1320' FWL.
 ENCORE 21-12 TO BE AT 520' FNL, 2410' FWL.
 BOTTOM HOLE AT 1300' FNL & 2600' FEL.
 ENCORE 5-12 TO BE AT 530' FNL, 2410' FWL.
 BOTTOM HOLE AT 1980' FNL & 660' FWL.
 ENCORE 6-12 TO BE AT 540' FNL, 2410' FWL.
 BOTTOM HOLE AT 1980' FNL & 1980' FWL.



REVISIONS

INITIAL	DATE
SMF	02-11-10
SMF	02-19-10
SMF	03-08-10

PREPARED BY:



KERR-MCGEE OIL & GAS ONSHORE LP

FIELD DATE:
12-11-08

PAD NAME:
ENCORE 7 PAD

DRAWING DATE:
12-12-08

SURFACE LOCATION:

BY:
CAM

LARIMER COUNTY, COLORADO
NE 1/4 NW 1/4, SEC. 12, T5N, R68W