

**MDP Pad 11**  
**Lease Boundary Map**

CO 10276  
T. 6 S., R. 91 W. 6th P.M.  
Sec. 29; N2SW, SWNE, NWSE  
160 Acres

CO 10328  
T. 6 S., R. 91 W. 6th P.M.

Sec. 7: NESE  
Sec. 8: E2E2, W2SW, SESW,  
SWSE  
Sec. 9: W2W2, SESW  
Sec. 16: N2NW, SWNW, N2SW,  
SESW  
Sec. 20: N2NE, SENE, NENW, E2SE  
Sec. 21: W2SW, NENW, NWNE  
1,200 Acres

USA COC 46972  
T. 6 S., R. 91 W. 6th P.M.  
Sec. 29; E2E2, NWNE, SWSE  
Sec. 32; E2, NENW  
600 Acres

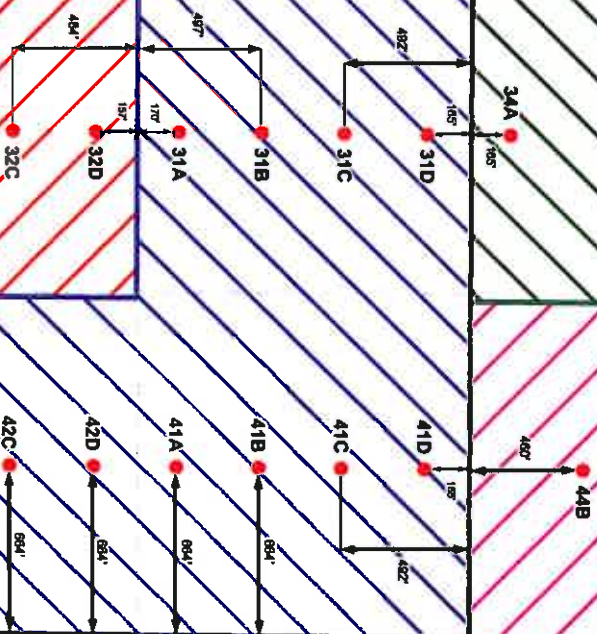
USA COC 50128  
T. 6 S., R. 91 W. 6th P.M.  
Sec. 19; Lots 1, 2, 3, NE, E2NW,  
NESW, N2SE  
Sec. 20: SWNE, NWNW, S2NW,  
N2SW, SESW, W2SE  
Sec. 21: W2NW  
921.08 Acres

Bottom Hole Location  
Gibson Gulch Fed Unit

6S/91W

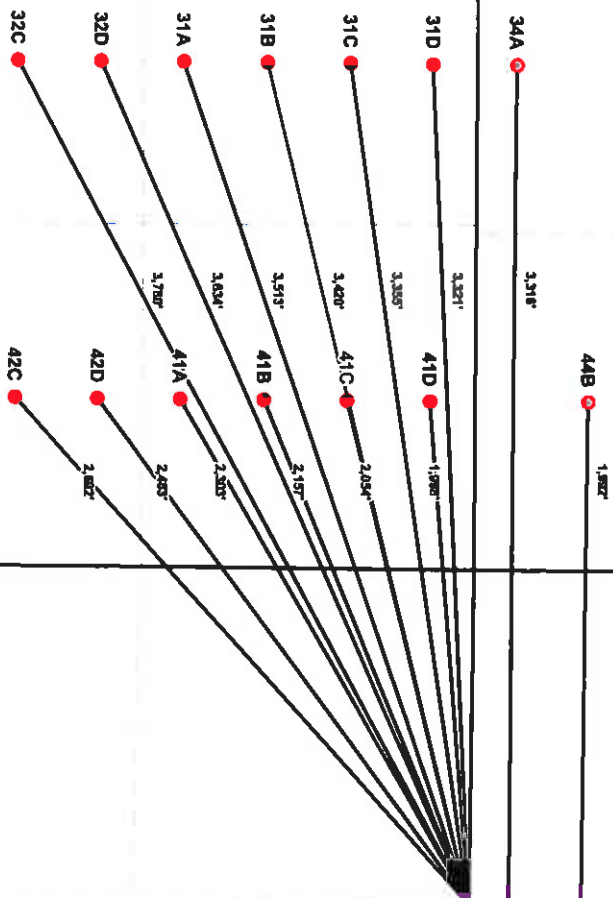
29

2



MDP Pad 11  
Fed Unit Boundary Map

- Bottom Hole Location
- Gibson Gulch Fed Unit



6S/91W

29

28

30

20

21

28

