

BILL BARRETT CORP

GARFIELD COUNTY, COLORADO NAD 1983

MDP #11

GGU Federal #31D-29-691

GGU Federal #31D-29-691

Plan: Design #1

Standard Planning Report

28 April, 2010

BBC

Planning Report

Database:	Compass	Local Co-ordinate Reference:	Well GGU Federal #31D-29-691
Company:	BILL BARRETT CORP	TVD Reference:	WELL @ 0.00ft (Original Well Elev)
Project:	GARFIELD COUNTY, COLORADO NAD 1983	MD Reference:	WELL @ 0.00ft (Original Well Elev)
Site:	MDP #11	North Reference:	Grid
Well:	GGU Federal #31D-29-691	Survey Calculation Method:	Minimum Curvature
Wellbore:	GGU Federal #31D-29-691		
Design:	Design #1		

Project	GARFIELD COUNTY, COLORADO NAD 1983		
Map System:	US State Plane 1983	System Datum:	Mean Sea Level
Geo Datum:	North American Datum 1983		
Map Zone:	Colorado Central Zone		

Site	MDP #11		
Site Position:		Northing:	1,614,678.473 ft
From:	Lat/Long	Easting:	2,415,085.675 ft
Position Uncertainty:	0.00 ft	Slot Radius:	"
		Latitude:	39° 30' 9.890 N
		Longitude:	107° 34' 23.0500 W
		Grid Convergence:	-1.31 °

Well	GGU Federal #31D-29-691		
Well Position	+N/-S	31.02 ft	Northing:
	+E/-W	-73.77 ft	Easting:
Position Uncertainty		0.00 ft	Wellhead Elevation:
			ft
			Latitude:
			39° 30' 10.180 N
			Longitude:
			107° 34' 24.0000 W
			Ground Level:
			0.00 ft

Wellbore	GGU Federal #31D-29-691				
Magnetics	Model Name	Sample Date	Declination (°)	Dip Angle (°)	Field Strength (nT)
	IGRF200510	12/31/2009	10.33	65.87	52,532

Design	Design #1			
Audit Notes:				
Version:	Phase:	PROTOTYPE	Tie On Depth:	0.00
Vertical Section:	Depth From (TVD) (ft)	+N/-S (ft)	+E/-W (ft)	Direction (°)
	0.00	0.00	0.00	328.88

Plan Sections										
Measured Depth (ft)	Inclination (°)	Azimuth (°)	Vertical Depth (ft)	+N/-S (ft)	+E/-W (ft)	Dogleg Rate (°/100ft)	Build Rate (°/100ft)	Turn Rate (°/100ft)	TFO (°)	Target
0.00	0.00	0.00	0.00	0.00	0.00	0.00	0.00	0.00	0.00	
837.70	0.00	0.00	837.70	0.00	0.00	0.00	0.00	0.00	0.00	
1,743.75	22.65	328.88	1,720.34	151.34	-91.36	2.50	2.50	0.00	328.88	
3,991.13	22.65	328.88	3,794.36	892.31	-538.66	0.00	0.00	0.00	0.00	
4,897.19	0.00	0.00	4,677.00	1,043.65	-630.02	2.50	-2.50	0.00	180.00	
7,597.19	0.00	0.00	7,377.00	1,043.65	-630.02	0.00	0.00	0.00	0.00	PBHL_GGU Federal

BBC
Planning Report

Database:	Compass	Local Co-ordinate Reference:	Well GGU Federal #31D-29-691
Company:	BILL BARRETT CORP	TVD Reference:	WELL @ 0.00ft (Original Well Elev)
Project:	GARFIELD COUNTY, COLORADO NAD 1983	MD Reference:	WELL @ 0.00ft (Original Well Elev)
Site:	MDP #11	North Reference:	Grid
Well:	GGU Federal #31D-29-691	Survey Calculation Method:	Minimum Curvature
Wellbore:	GGU Federal #31D-29-691		
Design:	Design #1		

Planned Survey									
Measured Depth (ft)	Inclination (°)	Azimuth (°)	Vertical Depth (ft)	+N/-S (ft)	+E/-W (ft)	Vertical Section (ft)	Dogleg Rate (°/100ft)	Build Rate (°/100ft)	Turn Rate (°/100ft)
0.00	0.00	0.00	0.00	0.00	0.00	0.00	0.00	0.00	0.00
100.00	0.00	0.00	100.00	0.00	0.00	0.00	0.00	0.00	0.00
200.00	0.00	0.00	200.00	0.00	0.00	0.00	0.00	0.00	0.00
300.00	0.00	0.00	300.00	0.00	0.00	0.00	0.00	0.00	0.00
400.00	0.00	0.00	400.00	0.00	0.00	0.00	0.00	0.00	0.00
500.00	0.00	0.00	500.00	0.00	0.00	0.00	0.00	0.00	0.00
600.00	0.00	0.00	600.00	0.00	0.00	0.00	0.00	0.00	0.00
700.00	0.00	0.00	700.00	0.00	0.00	0.00	0.00	0.00	0.00
737.70	0.00	0.00	737.70	0.00	0.00	0.00	0.00	0.00	0.00
Surface Casing									
800.00	0.00	0.00	800.00	0.00	0.00	0.00	0.00	0.00	0.00
837.70	0.00	0.00	837.70	0.00	0.00	0.00	0.00	0.00	0.00
900.00	1.56	328.88	899.99	0.72	-0.44	0.85	2.50	2.50	0.00
1,000.00	4.06	328.88	999.86	4.92	-2.97	5.74	2.50	2.50	0.00
1,100.00	6.56	328.88	1,099.43	12.84	-7.75	14.99	2.50	2.50	0.00
1,200.00	9.06	328.88	1,198.49	24.46	-14.77	28.58	2.50	2.50	0.00
1,300.00	11.56	328.88	1,296.87	39.78	-24.02	46.47	2.50	2.50	0.00
1,400.00	14.06	328.88	1,394.38	58.76	-35.47	68.63	2.50	2.50	0.00
1,500.00	16.56	328.88	1,490.82	81.36	-49.11	95.03	2.50	2.50	0.00
1,600.00	19.06	328.88	1,586.02	107.54	-64.92	125.61	2.50	2.50	0.00
1,700.00	21.56	328.88	1,679.80	137.25	-82.85	160.31	2.50	2.50	0.00
1,743.75	22.65	328.88	1,720.34	151.34	-91.36	176.78	2.50	2.50	0.00
1,800.00	22.65	328.88	1,772.24	169.89	-102.56	198.44	0.00	0.00	0.00
1,900.00	22.65	328.88	1,864.53	202.86	-122.46	236.95	0.00	0.00	0.00
2,000.00	22.65	328.88	1,956.82	235.83	-142.36	275.47	0.00	0.00	0.00
2,100.00	22.65	328.88	2,049.10	268.80	-162.27	313.98	0.00	0.00	0.00
2,200.00	22.65	328.88	2,141.39	301.77	-182.17	352.49	0.00	0.00	0.00
2,300.00	22.65	328.88	2,233.68	334.74	-202.07	391.00	0.00	0.00	0.00
2,400.00	22.65	328.88	2,325.96	367.71	-221.98	429.51	0.00	0.00	0.00
2,500.00	22.65	328.88	2,418.25	400.68	-241.88	468.03	0.00	0.00	0.00
2,600.00	22.65	328.88	2,510.54	433.65	-261.78	506.54	0.00	0.00	0.00
2,700.00	22.65	328.88	2,602.82	466.62	-281.69	545.05	0.00	0.00	0.00
2,800.00	22.65	328.88	2,695.11	499.59	-301.59	583.56	0.00	0.00	0.00
2,900.00	22.65	328.88	2,787.40	532.56	-321.49	622.08	0.00	0.00	0.00
3,000.00	22.65	328.88	2,879.68	565.53	-341.39	660.59	0.00	0.00	0.00
3,100.00	22.65	328.88	2,971.97	598.50	-361.30	699.10	0.00	0.00	0.00
3,200.00	22.65	328.88	3,064.26	631.47	-381.20	737.61	0.00	0.00	0.00
3,300.00	22.65	328.88	3,156.54	664.44	-401.10	776.12	0.00	0.00	0.00
3,400.00	22.65	328.88	3,248.83	697.41	-421.01	814.64	0.00	0.00	0.00
3,500.00	22.65	328.88	3,341.11	730.38	-440.91	853.15	0.00	0.00	0.00
3,600.00	22.65	328.88	3,433.40	763.35	-460.81	891.66	0.00	0.00	0.00
3,685.17	22.65	328.88	3,512.00	791.43	-477.77	924.46	0.00	0.00	0.00
Mesaverde									
3,700.00	22.65	328.88	3,525.69	796.32	-480.72	930.17	0.00	0.00	0.00
3,800.00	22.65	328.88	3,617.97	829.29	-500.62	968.69	0.00	0.00	0.00
3,900.00	22.65	328.88	3,710.26	862.26	-520.52	1,007.20	0.00	0.00	0.00
3,991.13	22.65	328.88	3,794.36	892.31	-538.66	1,042.29	0.00	0.00	0.00
4,000.00	22.43	328.88	3,802.55	895.22	-540.42	1,045.69	2.50	-2.50	0.00
4,100.00	19.93	328.88	3,895.79	926.15	-559.09	1,081.82	2.50	-2.50	0.00
4,200.00	17.43	328.88	3,990.52	953.57	-575.64	1,113.85	2.50	-2.50	0.00
4,300.00	14.93	328.88	4,086.55	977.42	-590.04	1,141.71	2.50	-2.50	0.00
4,400.00	12.43	328.88	4,183.70	997.66	-602.26	1,165.36	2.50	-2.50	0.00
4,500.00	9.93	328.88	4,281.80	1,014.26	-612.28	1,184.74	2.50	-2.50	0.00

BBC

Planning Report

Database:	Compass	Local Co-ordinate Reference:	Well GGU Federal #31D-29-691
Company:	BILL BARRETT CORP	TVD Reference:	WELL @ 0.00ft (Original Well Elev)
Project:	GARFIELD COUNTY, COLORADO NAD 1983	MD Reference:	WELL @ 0.00ft (Original Well Elev)
Site:	MDP #11	North Reference:	Grid
Well:	GGU Federal #31D-29-691	Survey Calculation Method:	Minimum Curvature
Wellbore:	GGU Federal #31D-29-691		
Design:	Design #1		

Planned Survey

Measured Depth (ft)	Inclination (°)	Azimuth (°)	Vertical Depth (ft)	+N/-S (ft)	+E/-W (ft)	Vertical Section (ft)	Dogleg Rate (°/100ft)	Build Rate (°/100ft)	Turn Rate (°/100ft)
4,525.56	9.29	328.88	4,307.00	1,017.91	-614.49	1,189.01	2.50	-2.50	0.00
Price Coal									
4,600.00	7.43	328.88	4,380.65	1,027.18	-620.08	1,199.83	2.50	-2.50	0.00
4,700.00	4.93	328.88	4,480.06	1,036.39	-625.64	1,210.60	2.50	-2.50	0.00
4,800.00	2.43	328.88	4,579.84	1,041.89	-628.96	1,217.01	2.50	-2.50	0.00
4,897.19	0.00	0.00	4,677.00	1,043.65	-630.02	1,219.07	2.50	-2.50	0.00
Top of Gas									
4,900.00	0.00	0.00	4,679.81	1,043.65	-630.02	1,219.07	0.00	0.00	0.00
5,000.00	0.00	0.00	4,779.81	1,043.65	-630.02	1,219.07	0.00	0.00	0.00
5,100.00	0.00	0.00	4,879.81	1,043.65	-630.02	1,219.07	0.00	0.00	0.00
5,200.00	0.00	0.00	4,979.81	1,043.65	-630.02	1,219.07	0.00	0.00	0.00
5,300.00	0.00	0.00	5,079.81	1,043.65	-630.02	1,219.07	0.00	0.00	0.00
5,400.00	0.00	0.00	5,179.81	1,043.65	-630.02	1,219.07	0.00	0.00	0.00
5,500.00	0.00	0.00	5,279.81	1,043.65	-630.02	1,219.07	0.00	0.00	0.00
5,600.00	0.00	0.00	5,379.81	1,043.65	-630.02	1,219.07	0.00	0.00	0.00
5,700.00	0.00	0.00	5,479.81	1,043.65	-630.02	1,219.07	0.00	0.00	0.00
5,800.00	0.00	0.00	5,579.81	1,043.65	-630.02	1,219.07	0.00	0.00	0.00
5,900.00	0.00	0.00	5,679.81	1,043.65	-630.02	1,219.07	0.00	0.00	0.00
6,000.00	0.00	0.00	5,779.81	1,043.65	-630.02	1,219.07	0.00	0.00	0.00
6,100.00	0.00	0.00	5,879.81	1,043.65	-630.02	1,219.07	0.00	0.00	0.00
6,200.00	0.00	0.00	5,979.81	1,043.65	-630.02	1,219.07	0.00	0.00	0.00
6,300.00	0.00	0.00	6,079.81	1,043.65	-630.02	1,219.07	0.00	0.00	0.00
6,400.00	0.00	0.00	6,179.81	1,043.65	-630.02	1,219.07	0.00	0.00	0.00
6,500.00	0.00	0.00	6,279.81	1,043.65	-630.02	1,219.07	0.00	0.00	0.00
6,600.00	0.00	0.00	6,379.81	1,043.65	-630.02	1,219.07	0.00	0.00	0.00
6,700.00	0.00	0.00	6,479.81	1,043.65	-630.02	1,219.07	0.00	0.00	0.00
6,800.00	0.00	0.00	6,579.81	1,043.65	-630.02	1,219.07	0.00	0.00	0.00
6,900.00	0.00	0.00	6,679.81	1,043.65	-630.02	1,219.07	0.00	0.00	0.00
7,000.00	0.00	0.00	6,779.81	1,043.65	-630.02	1,219.07	0.00	0.00	0.00
7,100.00	0.00	0.00	6,879.81	1,043.65	-630.02	1,219.07	0.00	0.00	0.00
7,200.00	0.00	0.00	6,979.81	1,043.65	-630.02	1,219.07	0.00	0.00	0.00
7,297.19	0.00	0.00	7,077.00	1,043.65	-630.02	1,219.07	0.00	0.00	0.00
Rollins									
7,300.00	0.00	0.00	7,079.81	1,043.65	-630.02	1,219.07	0.00	0.00	0.00
7,400.00	0.00	0.00	7,179.81	1,043.65	-630.02	1,219.07	0.00	0.00	0.00
7,500.00	0.00	0.00	7,279.81	1,043.65	-630.02	1,219.07	0.00	0.00	0.00
7,597.19	0.00	0.00	7,377.00	1,043.65	-630.02	1,219.07	0.00	0.00	0.00

Casing Points

Measured Depth (ft)	Vertical Depth (ft)	Name	Casing Diameter (")	Hole Diameter (")
737.70	737.70	Surface Casing	9-5/8	12-1/4

BBC

Planning Report

Database:	Compass	Local Co-ordinate Reference:	Well GGU Federal #31D-29-691
Company:	BILL BARRETT CORP	TVD Reference:	WELL @ 0.00ft (Original Well Elev)
Project:	GARFIELD COUNTY, COLORADO NAD 1983	MD Reference:	WELL @ 0.00ft (Original Well Elev)
Site:	MDP #11	North Reference:	Grid
Well:	GGU Federal #31D-29-691	Survey Calculation Method:	Minimum Curvature
Wellbore:	GGU Federal #31D-29-691		
Design:	Design #1		

Formations						
Measured Depth (ft)	Vertical Depth (ft)	Name	Lithology	Dip (°)	Dip Direction (°)	
3,685.17	3,512.00	Mesaverde		0.00		
4,525.56	4,307.00	Price Coal		0.00		
4,897.19	4,677.00	Top of Gas		0.00		
7,297.19	7,077.00	Rollins		0.00		

WELL DETAILS: GGU Federal #31D-29-691

Ground Level: 0.00
 +N/-S+E/-W Northing Easting Latitude Longitude Slot
 0.00 0.00 1614709.492 2415011.909 30° 10' 18" N 104° 24' 24.0000 W



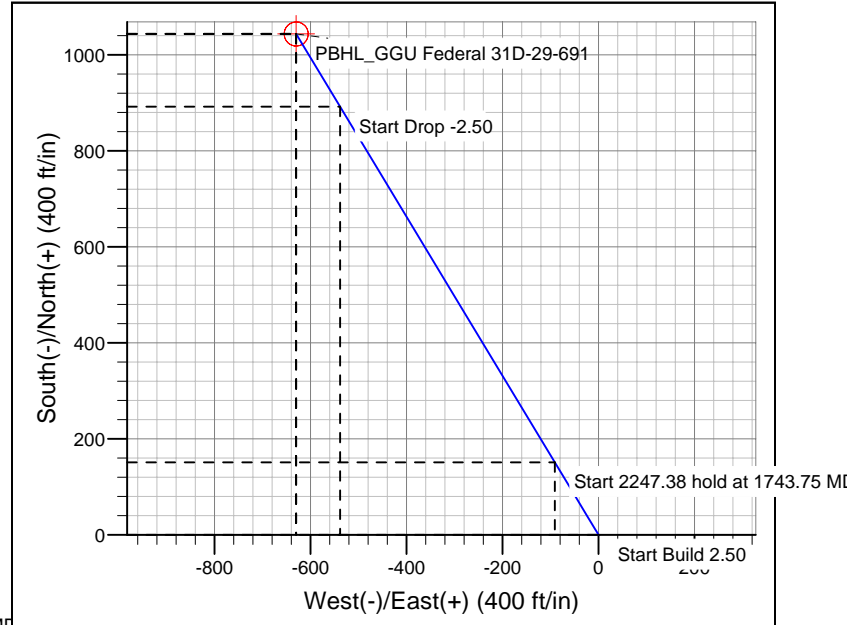
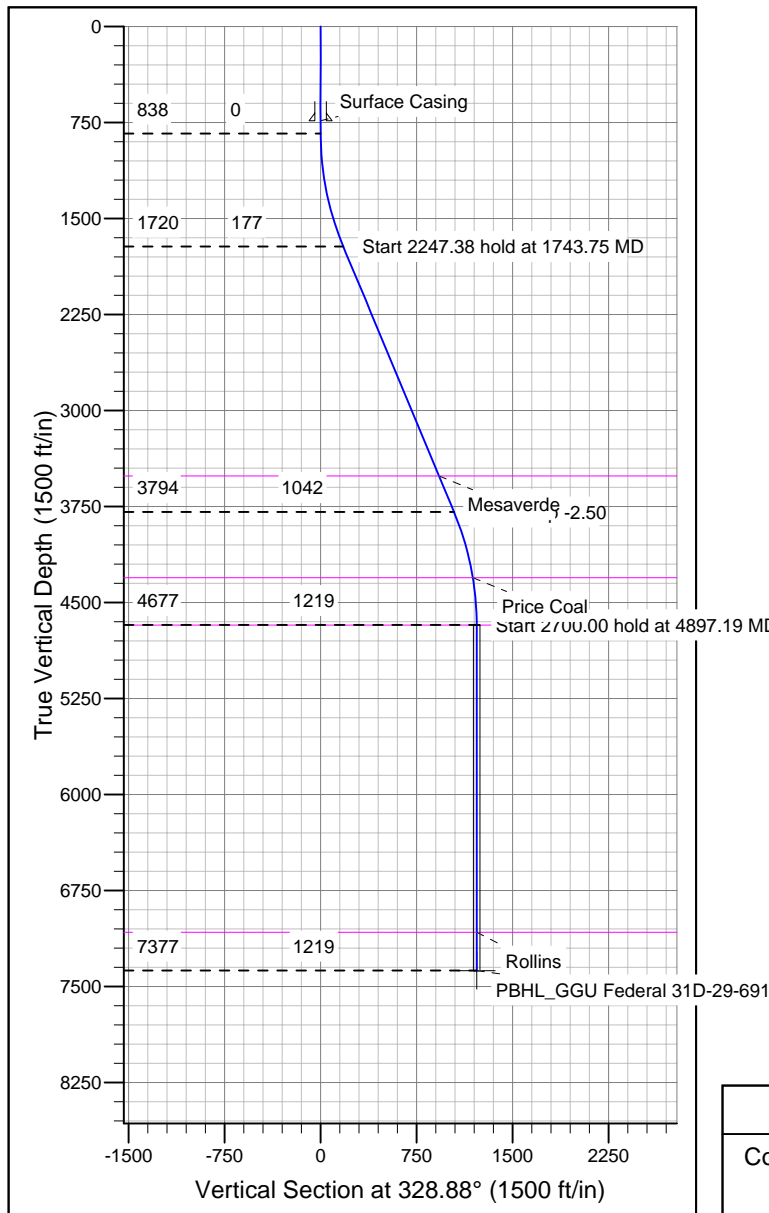
Azimuths to Grid North
 True North: 1.31°
 Magnetic North: 11.64°
 Magnetic Field
 Strength: 52532.1snT
 Dip Angle: 65.87°
 Date: 12/31/2009
 Model: IGRF200510

SECTION DETAILS

Sec	MD	Inc	Azi	TVD	+N/-S	+E/-W	DLeg	TFace	VSec	Target
1	0.00	0.00	0.00	0.00	0.00	0.00	0.00	0.00	0.00	
2	37.70	0.00	0.00	837.70	0.00	0.00	0.00	0.00	0.00	
3	1743.75	22.65	328.88	1720.34	151.34	-91.36	2.50	328.88	176.78	
4	3791.13	22.65	328.88	3794.36	892.31	-538.66	0.00	0.00	1042.29	
5	4697.19	0.00	0.00	4677.00	1043.65	-630.02	2.50	180.00	219.07	
6	7077.19	0.00	0.00	7377.00	1043.65	-630.02	0.00	0.00	219.07	PBHL_GGU Federal 31D-29-691

WELLBORE TARGET DETAILS

Name TVD +N/-S +E/-W Shape
 PBHL_GGU Federal 31D-29-691 737.70 151.34 -91.36 Circle (Radius: 25.00)



CASING DETAILS

TVD MD Name Size
 737.70 37.70 Surface Casing 9-5/8

FORMATION TOP DETAILS

TVD Path MD Path Formation
 3512.00 3685.17 Mesaverde
 4307.00 4525.56 Price Coal
 4677.00 4897.19 Top of Gas
 7077.00 7297.19 Rollins

REFERENCE INFORMATION

Co-ordinate (N/E) Reference: Well GGU Federal #31D-29-691, Grid North
 Vertical (TVD) Reference: WELL @ 0.00ft (Original Well Elev)
 Section (VS) Reference: Slot - (0.00N, 0.00E)
 Measured Depth Reference: WELL @ 0.00ft (Original Well Elev)
 Calculation Method: Minimum Curvature