

BILL BARRETT CORP

GARFIELD COUNTY, COLORADO NAD 1983

MDP #11

GGU Swanson #32D-29-691

GGU Swanson #32D-29-691

Plan: Design #1

Standard Planning Report

28 April, 2010

BBC

Planning Report

Database:	Compass	Local Co-ordinate Reference:	Well GGU Swanson #32D-29-691
Company:	BILL BARRETT CORP	TVD Reference:	WELL @ 0.00ft (Original Well Elev)
Project:	GARFIELD COUNTY, COLORADO NAD 1983	MD Reference:	WELL @ 0.00ft (Original Well Elev)
Site:	MDP #11	North Reference:	Grid
Well:	GGU Swanson #32D-29-691	Survey Calculation Method:	Minimum Curvature
Wellbore:	GGU Swanson #32D-29-691		
Design:	Design #1		

Project	GARFIELD COUNTY, COLORADO NAD 1983		
Map System:	US State Plane 1983	System Datum:	Mean Sea Level
Geo Datum:	North American Datum 1983		
Map Zone:	Colorado Central Zone		

Site	MDP #11		
Site Position:		Northing:	1,614,678.473 ft
From:	Lat/Long	Easting:	2,415,085.675 ft
Position Uncertainty:	0.00 ft	Slot Radius:	"
		Latitude:	39° 30' 9.890 N
		Longitude:	107° 34' 23.0500 W
		Grid Convergence:	-1.31 °

Well	GGU Swanson #32D-29-691		
Well Position	+N/-S	15.60 ft	Northing:
	+E/-W	-63.15 ft	Easting:
Position Uncertainty		0.00 ft	Wellhead Elevation:
			ft
			Latitude:
			39° 30' 10.030 N
			Longitude:
			107° 34' 23.8600 W
			Ground Level:
			0.00 ft

Wellbore	GGU Swanson #32D-29-691				
Magnetics	Model Name	Sample Date	Declination (°)	Dip Angle (°)	Field Strength (nT)
	IGRF200510	12/31/2009	10.33	65.87	52,532

Design	Design #1			
Audit Notes:				
Version:	Phase:	PROTOTYPE	Tie On Depth:	0.00
Vertical Section:	Depth From (TVD) (ft)	+N/-S (ft)	+E/-W (ft)	Direction (°)
	0.00	0.00	0.00	249.07

Plan Sections										
Measured Depth (ft)	Inclination (°)	Azimuth (°)	Vertical Depth (ft)	+N/-S (ft)	+E/-W (ft)	Dogleg Rate (°/100ft)	Build Rate (°/100ft)	Turn Rate (°/100ft)	TFO (°)	Target
0.00	0.00	0.00	0.00	0.00	0.00	0.00	0.00	0.00	0.00	
839.40	0.00	0.00	839.40	0.00	0.00	0.00	0.00	0.00	0.00	
1,295.51	11.40	249.07	1,292.51	-16.16	-42.25	2.50	2.50	0.00	249.07	
4,354.27	11.40	249.07	4,290.89	-232.14	-607.10	0.00	0.00	0.00	0.00	
4,810.38	0.00	0.00	4,744.00	-248.29	-649.35	2.50	-2.50	0.00	180.00	
7,460.38	0.00	0.00	7,394.00	-248.29	-649.35	0.00	0.00	0.00	0.00	PBHL_GGU Federz

BBC

Planning Report

Database:	Compass	Local Co-ordinate Reference:	Well GGU Swanson #32D-29-691
Company:	BILL BARRETT CORP	TVD Reference:	WELL @ 0.00ft (Original Well Elev)
Project:	GARFIELD COUNTY, COLORADO NAD 1983	MD Reference:	WELL @ 0.00ft (Original Well Elev)
Site:	MDP #11	North Reference:	Grid
Well:	GGU Swanson #32D-29-691	Survey Calculation Method:	Minimum Curvature
Wellbore:	GGU Swanson #32D-29-691		
Design:	Design #1		

Planned Survey										
Measured Depth (ft)	Inclination (°)	Azimuth (°)	Vertical Depth (ft)	+N/-S (ft)	+E/-W (ft)	Vertical Section (ft)	Dogleg Rate (°/100ft)	Build Rate (°/100ft)	Turn Rate (°/100ft)	
0.00	0.00	0.00	0.00	0.00	0.00	0.00	0.00	0.00	0.00	
100.00	0.00	0.00	100.00	0.00	0.00	0.00	0.00	0.00	0.00	
200.00	0.00	0.00	200.00	0.00	0.00	0.00	0.00	0.00	0.00	
300.00	0.00	0.00	300.00	0.00	0.00	0.00	0.00	0.00	0.00	
400.00	0.00	0.00	400.00	0.00	0.00	0.00	0.00	0.00	0.00	
500.00	0.00	0.00	500.00	0.00	0.00	0.00	0.00	0.00	0.00	
600.00	0.00	0.00	600.00	0.00	0.00	0.00	0.00	0.00	0.00	
700.00	0.00	0.00	700.00	0.00	0.00	0.00	0.00	0.00	0.00	
739.40	0.00	0.00	739.40	0.00	0.00	0.00	0.00	0.00	0.00	
Surface Casing										
800.00	0.00	0.00	800.00	0.00	0.00	0.00	0.00	0.00	0.00	
839.40	0.00	0.00	839.40	0.00	0.00	0.00	0.00	0.00	0.00	
900.00	1.51	249.07	899.99	-0.29	-0.75	0.80	2.50	2.50	0.00	
1,000.00	4.01	249.07	999.87	-2.01	-5.25	5.62	2.50	2.50	0.00	
1,100.00	6.51	249.07	1,099.44	-5.29	-13.82	14.80	2.50	2.50	0.00	
1,200.00	9.01	249.07	1,198.51	-10.11	-26.44	28.31	2.50	2.50	0.00	
1,295.51	11.40	249.07	1,292.51	-16.16	-42.25	45.24	2.50	2.50	0.00	
1,300.00	11.40	249.07	1,296.91	-16.47	-43.08	46.12	0.00	0.00	0.00	
1,400.00	11.40	249.07	1,394.93	-23.53	-61.55	65.89	0.00	0.00	0.00	
1,500.00	11.40	249.07	1,492.96	-30.60	-80.02	85.67	0.00	0.00	0.00	
1,600.00	11.40	249.07	1,590.98	-37.66	-98.48	105.44	0.00	0.00	0.00	
1,700.00	11.40	249.07	1,689.01	-44.72	-116.95	125.21	0.00	0.00	0.00	
1,800.00	11.40	249.07	1,787.04	-51.78	-135.42	144.98	0.00	0.00	0.00	
1,900.00	11.40	249.07	1,885.06	-58.84	-153.88	164.75	0.00	0.00	0.00	
2,000.00	11.40	249.07	1,983.09	-65.90	-172.35	184.52	0.00	0.00	0.00	
2,100.00	11.40	249.07	2,081.12	-72.96	-190.81	204.29	0.00	0.00	0.00	
2,200.00	11.40	249.07	2,179.14	-80.02	-209.28	224.06	0.00	0.00	0.00	
2,300.00	11.40	249.07	2,277.17	-87.08	-227.75	243.83	0.00	0.00	0.00	
2,400.00	11.40	249.07	2,375.19	-94.14	-246.21	263.60	0.00	0.00	0.00	
2,500.00	11.40	249.07	2,473.22	-101.21	-264.68	283.37	0.00	0.00	0.00	
2,600.00	11.40	249.07	2,571.25	-108.27	-283.15	303.14	0.00	0.00	0.00	
2,700.00	11.40	249.07	2,669.27	-115.33	-301.61	322.91	0.00	0.00	0.00	
2,800.00	11.40	249.07	2,767.30	-122.39	-320.08	342.68	0.00	0.00	0.00	
2,900.00	11.40	249.07	2,865.33	-129.45	-338.55	362.45	0.00	0.00	0.00	
3,000.00	11.40	249.07	2,963.35	-136.51	-357.01	382.22	0.00	0.00	0.00	
3,100.00	11.40	249.07	3,061.38	-143.57	-375.48	401.99	0.00	0.00	0.00	
3,200.00	11.40	249.07	3,159.40	-150.63	-393.95	421.76	0.00	0.00	0.00	
3,300.00	11.40	249.07	3,257.43	-157.69	-412.41	441.53	0.00	0.00	0.00	
3,400.00	11.40	249.07	3,355.46	-164.75	-430.88	461.30	0.00	0.00	0.00	
3,500.00	11.40	249.07	3,453.48	-171.82	-449.35	481.07	0.00	0.00	0.00	
3,526.03	11.40	249.07	3,479.00	-173.65	-454.15	486.22	0.00	0.00	0.00	
Mesaverde										
3,600.00	11.40	249.07	3,551.51	-178.88	-467.81	500.85	0.00	0.00	0.00	
3,700.00	11.40	249.07	3,649.53	-185.94	-486.28	520.62	0.00	0.00	0.00	
3,800.00	11.40	249.07	3,747.56	-193.00	-504.75	540.39	0.00	0.00	0.00	
3,900.00	11.40	249.07	3,845.59	-200.06	-523.21	560.16	0.00	0.00	0.00	
4,000.00	11.40	249.07	3,943.61	-207.12	-541.68	579.93	0.00	0.00	0.00	
4,100.00	11.40	249.07	4,041.64	-214.18	-560.15	599.70	0.00	0.00	0.00	
4,200.00	11.40	249.07	4,139.67	-221.24	-578.61	619.47	0.00	0.00	0.00	
4,300.00	11.40	249.07	4,237.69	-228.30	-597.08	639.24	0.00	0.00	0.00	
4,347.24	11.40	249.07	4,284.00	-231.64	-605.80	648.58	0.00	0.00	0.00	
Price Coal										
4,354.27	11.40	249.07	4,290.89	-232.14	-607.10	649.97	0.00	0.00	0.00	

BBC

Planning Report

Database:	Compass	Local Co-ordinate Reference:	Well GGU Swanson #32D-29-691
Company:	BILL BARRETT CORP	TVD Reference:	WELL @ 0.00ft (Original Well Elev)
Project:	GARFIELD COUNTY, COLORADO NAD 1983	MD Reference:	WELL @ 0.00ft (Original Well Elev)
Site:	MDP #11	North Reference:	Grid
Well:	GGU Swanson #32D-29-691	Survey Calculation Method:	Minimum Curvature
Wellbore:	GGU Swanson #32D-29-691		
Design:	Design #1		

Planned Survey									
Measured Depth (ft)	Inclination (°)	Azimuth (°)	Vertical Depth (ft)	+N/-S (ft)	+E/-W (ft)	Vertical Section (ft)	Dogleg Rate (°/100ft)	Build Rate (°/100ft)	Turn Rate (°/100ft)
4,400.00	10.26	249.07	4,335.80	-235.20	-615.13	658.56	2.50	-2.50	0.00
4,500.00	7.76	249.07	4,434.56	-240.80	-629.75	674.22	2.50	-2.50	0.00
4,600.00	5.26	249.07	4,533.91	-244.85	-640.34	685.56	2.50	-2.50	0.00
4,700.00	2.76	249.07	4,633.66	-247.34	-646.87	692.55	2.50	-2.50	0.00
4,800.00	0.26	249.07	4,733.62	-248.28	-649.33	695.18	2.50	-2.50	0.00
4,810.38	0.00	0.00	4,744.00	-248.29	-649.35	695.21	2.50	-2.50	0.00
Top of Gas									
4,900.00	0.00	0.00	4,833.62	-248.29	-649.35	695.21	0.00	0.00	0.00
5,000.00	0.00	0.00	4,933.62	-248.29	-649.35	695.21	0.00	0.00	0.00
5,100.00	0.00	0.00	5,033.62	-248.29	-649.35	695.21	0.00	0.00	0.00
5,200.00	0.00	0.00	5,133.62	-248.29	-649.35	695.21	0.00	0.00	0.00
5,300.00	0.00	0.00	5,233.62	-248.29	-649.35	695.21	0.00	0.00	0.00
5,400.00	0.00	0.00	5,333.62	-248.29	-649.35	695.21	0.00	0.00	0.00
5,500.00	0.00	0.00	5,433.62	-248.29	-649.35	695.21	0.00	0.00	0.00
5,600.00	0.00	0.00	5,533.62	-248.29	-649.35	695.21	0.00	0.00	0.00
5,700.00	0.00	0.00	5,633.62	-248.29	-649.35	695.21	0.00	0.00	0.00
5,800.00	0.00	0.00	5,733.62	-248.29	-649.35	695.21	0.00	0.00	0.00
5,900.00	0.00	0.00	5,833.62	-248.29	-649.35	695.21	0.00	0.00	0.00
6,000.00	0.00	0.00	5,933.62	-248.29	-649.35	695.21	0.00	0.00	0.00
6,100.00	0.00	0.00	6,033.62	-248.29	-649.35	695.21	0.00	0.00	0.00
6,200.00	0.00	0.00	6,133.62	-248.29	-649.35	695.21	0.00	0.00	0.00
6,300.00	0.00	0.00	6,233.62	-248.29	-649.35	695.21	0.00	0.00	0.00
6,400.00	0.00	0.00	6,333.62	-248.29	-649.35	695.21	0.00	0.00	0.00
6,500.00	0.00	0.00	6,433.62	-248.29	-649.35	695.21	0.00	0.00	0.00
6,600.00	0.00	0.00	6,533.62	-248.29	-649.35	695.21	0.00	0.00	0.00
6,700.00	0.00	0.00	6,633.62	-248.29	-649.35	695.21	0.00	0.00	0.00
6,800.00	0.00	0.00	6,733.62	-248.29	-649.35	695.21	0.00	0.00	0.00
6,900.00	0.00	0.00	6,833.62	-248.29	-649.35	695.21	0.00	0.00	0.00
7,000.00	0.00	0.00	6,933.62	-248.29	-649.35	695.21	0.00	0.00	0.00
7,100.00	0.00	0.00	7,033.62	-248.29	-649.35	695.21	0.00	0.00	0.00
7,160.38	0.00	0.00	7,094.00	-248.29	-649.35	695.21	0.00	0.00	0.00
Rollins									
7,200.00	0.00	0.00	7,133.62	-248.29	-649.35	695.21	0.00	0.00	0.00
7,300.00	0.00	0.00	7,233.62	-248.29	-649.35	695.21	0.00	0.00	0.00
7,400.00	0.00	0.00	7,333.62	-248.29	-649.35	695.21	0.00	0.00	0.00
7,460.38	0.00	0.00	7,394.00	-248.29	-649.35	695.21	0.00	0.00	0.00

Casing Points				
Measured Depth (ft)	Vertical Depth (ft)	Name	Casing Diameter (")	Hole Diameter (")
739.40	739.40	Surface Casing	9-5/8	12-1/4

BBC

Planning Report

Database:	Compass	Local Co-ordinate Reference:	Well GGU Swanson #32D-29-691
Company:	BILL BARRETT CORP	TVD Reference:	WELL @ 0.00ft (Original Well Elev)
Project:	GARFIELD COUNTY, COLORADO NAD 1983	MD Reference:	WELL @ 0.00ft (Original Well Elev)
Site:	MDP #11	North Reference:	Grid
Well:	GGU Swanson #32D-29-691	Survey Calculation Method:	Minimum Curvature
Wellbore:	GGU Swanson #32D-29-691		
Design:	Design #1		

Formations						
Measured Depth (ft)	Vertical Depth (ft)	Name	Lithology	Dip (°)	Dip Direction (°)	
3,526.03	3,479.00	Mesaverde		0.00		
4,347.24	4,284.00	Price Coal		0.00		
4,810.38	4,744.00	Top of Gas		0.00		
7,160.38	7,094.00	Rollins		0.00		

WELL DETAILS: GGU Swanson #32D-29-691

Ground Level: 0.00
 +N/-S+E/-W Northing Easting Latitude Longitude Slot
 0.00 0.00 1614694.074 2415022.525 30° 10.000' 134" 23.8600 W



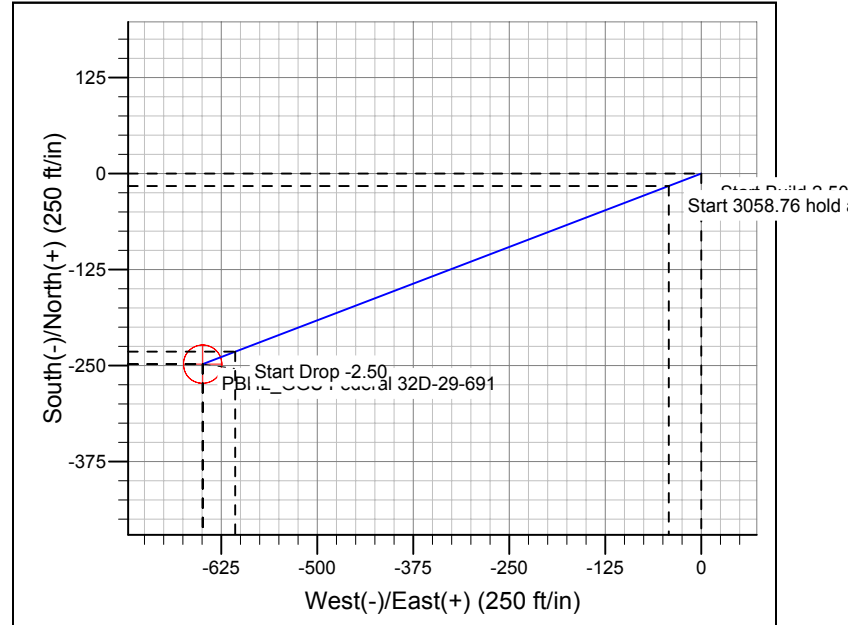
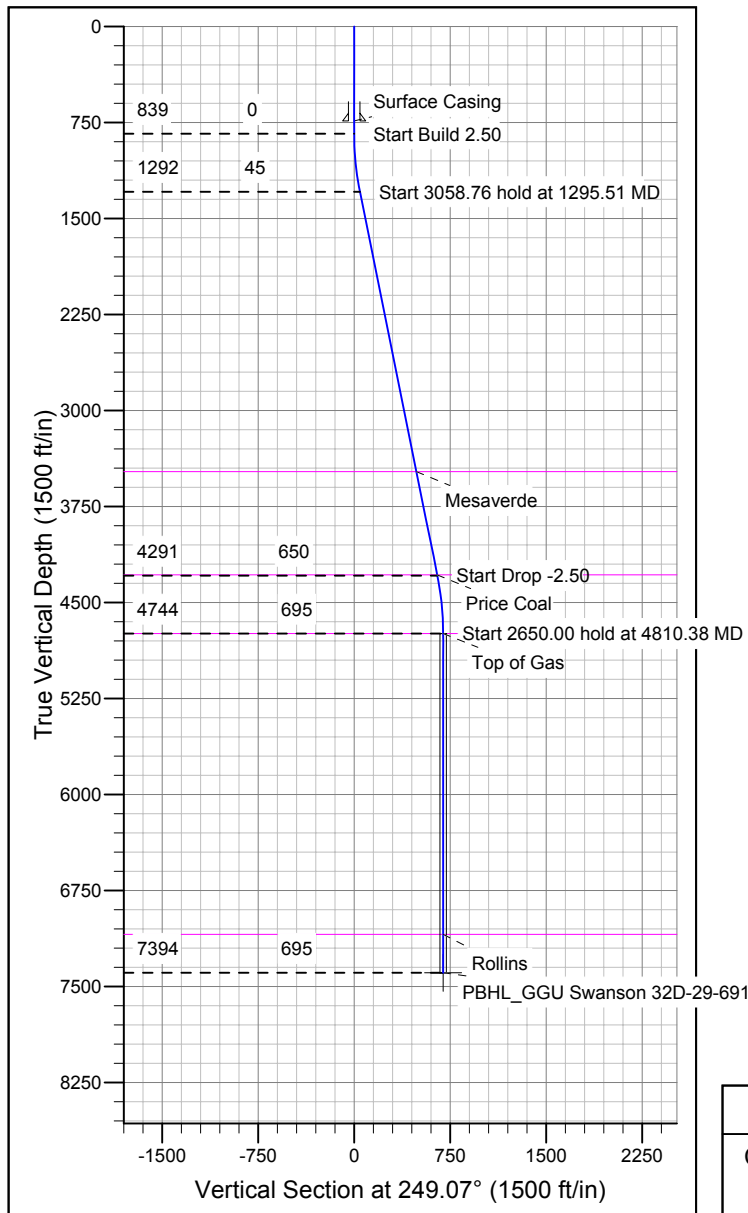
Azimuths to Grid North
 True North: 1.31°
 Magnetic North: 11.64°
 Magnetic Field
 Strength: 52532.0snT
 Dip Angle: 65.87°
 Date: 12/31/2009
 Model: IGRF200510

SECTION DETAILS

Sec	MD	Inc	Azi	TVD	+N/-S	+E/-W	DLeg	TFace	VSec	Target
1	0.00	0.00	0.00	0.00	0.00	0.00	0.00	0.00	0.00	
2	39.40	0.00	0.00	839.40	0.00	0.00	0.00	0.00	0.00	
3	95.51	11.40	249.07	1292.51	-16.16	-42.25	2.50	249.07	45.24	
4	54.27	11.40	249.07	4290.89	-232.14	-607.10	0.00	0.00	649.97	
5	10.38	0.00	0.00	4744.00	-248.29	-649.35	2.50	180.00	695.21	
6	60.38	0.00	0.00	7394.00	-248.29	-649.35	0.00	0.00	695.21	PBHL_GGU Swanson 32D-29-691

WELLBORE TARGET DETAILS

Name	TVD	+N/-S	+E/-W	Shape
PBHL_GGU Swanson 32D-29-691	7394.00	-248.29	-649.35	Circle (Radius: 25.00)



CASING DETAILS

TVD	MD	Name	Size
739.40	739.40	Surface Casing	9-5/8

FORMATION TOP DETAILS

TVDPath	MDPath	Formation
3479.00	3526.03	Mesaverde
4284.00	4347.24	Price Coal
4744.00	4810.38	Top of Gas
7094.00	7160.38	Rollins

REFERENCE INFORMATION

Co-ordinate (N/E) Reference: Well GGU Swanson #32D-29-691, Grid North
 Vertical (TVD) Reference: WELL @ 0.00ft (Original Well Elev)
 Section (VS) Reference: Slot - (0.00N, 0.00E)
 Measured Depth Reference: WELL @ 0.00ft (Original Well Elev)
 Calculation Method: Minimum Curvature