

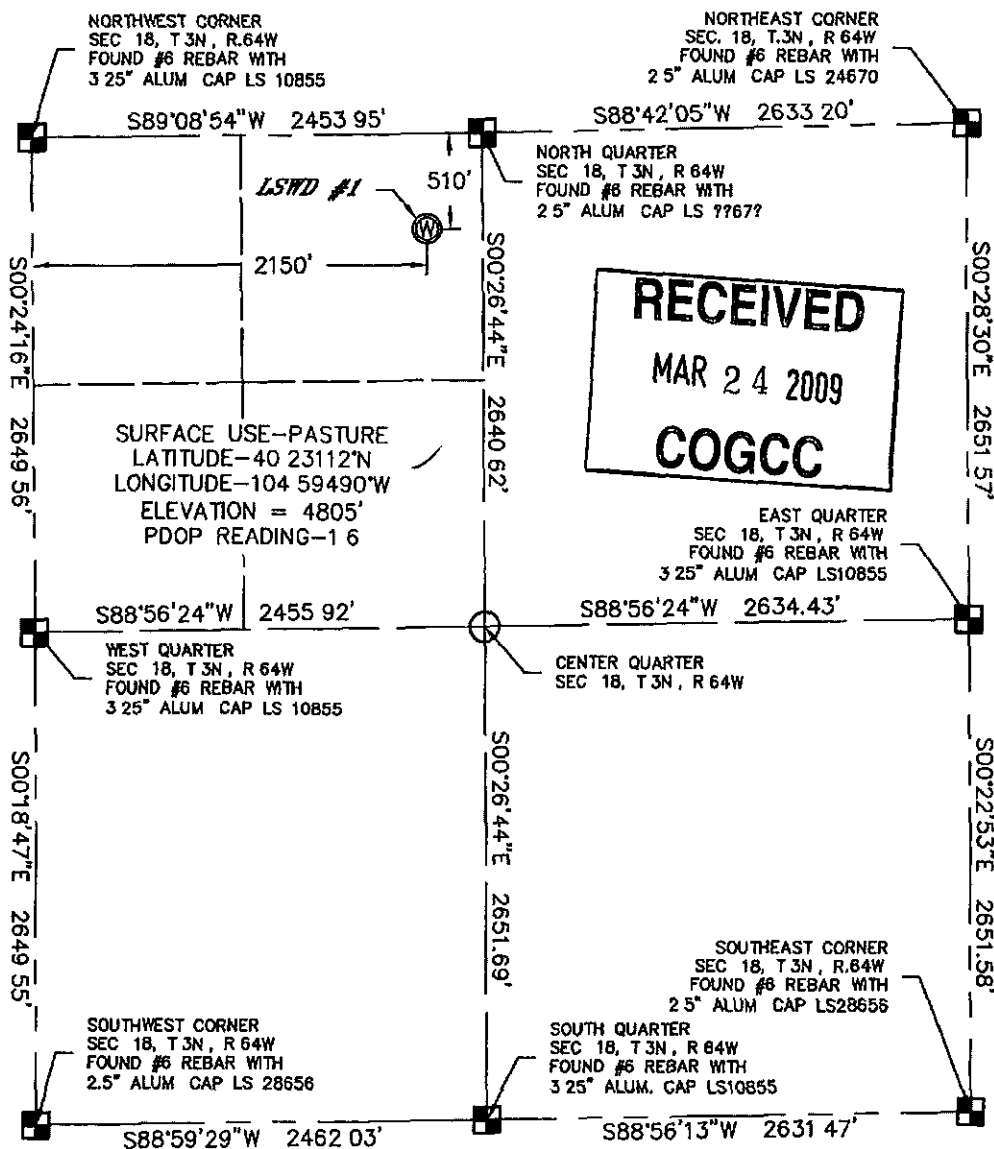
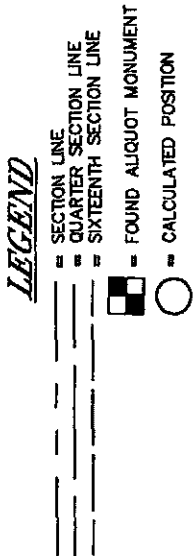


LSWD #1

# WELL LOCATION

LOCATION  
NW 1/4 SEC 18, T 3N, R.64W

See Visible Improvements Exhibit  
for all visible improvements within  
400' of wellhead



**RECEIVED**  
MAR 24 2009  
**COGCC**

All distances to section lines  
are measured perpendicular to  
said section lines

Ground elevation shown is  
approximate and is based on  
an observed GPS elevation  
(NAVD 1988 DATUM)

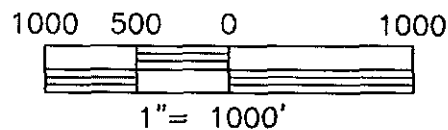
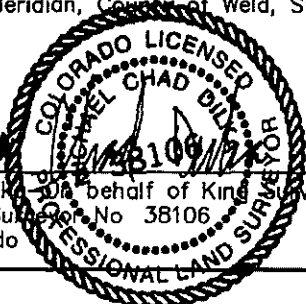
Bearings shown are Grid Bearings of  
the Colorado State Plane Coordinate  
System, North Zone, North American  
Datum 1983/2007

The lineal dimensions as contained  
herein are based upon the "US  
Survey Foot"

King Surveyors Inc of Windsor, Colorado has in accordance with a request from Jim Annable  
for J+M Energy, Inc. determined the surface location of LSWD #1 to be 510' from the North  
line and 2150' from the West line of Section 18, Township 3 North, Range 64 West of the  
Sixth Principal Meridian, County of Weld, State of Colorado

*Michael Chad Dill*  
Michael Chad Dill, on behalf of King Surveyors, Inc.  
Licensed Land Surveyor No 38106  
State of Colorado

*2/5/2009*



**KING SURVEYORS, INC.**

650 E. Garden Drive | Windsor, Colorado 80550

phone: (970) 686-5011 | fax (970) 686-5821

www.kingsurveyors.com

PROJECT NO: 2008433

DATE: 2-5-09

CLIENT: J+M ENERGY

DWG: 2008433WELL.dwg

FIELD OPERATOR: DALLAS NIELSEN

DATE OF WORK: 2-4-09