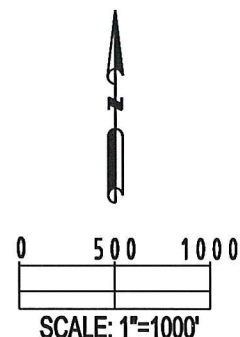
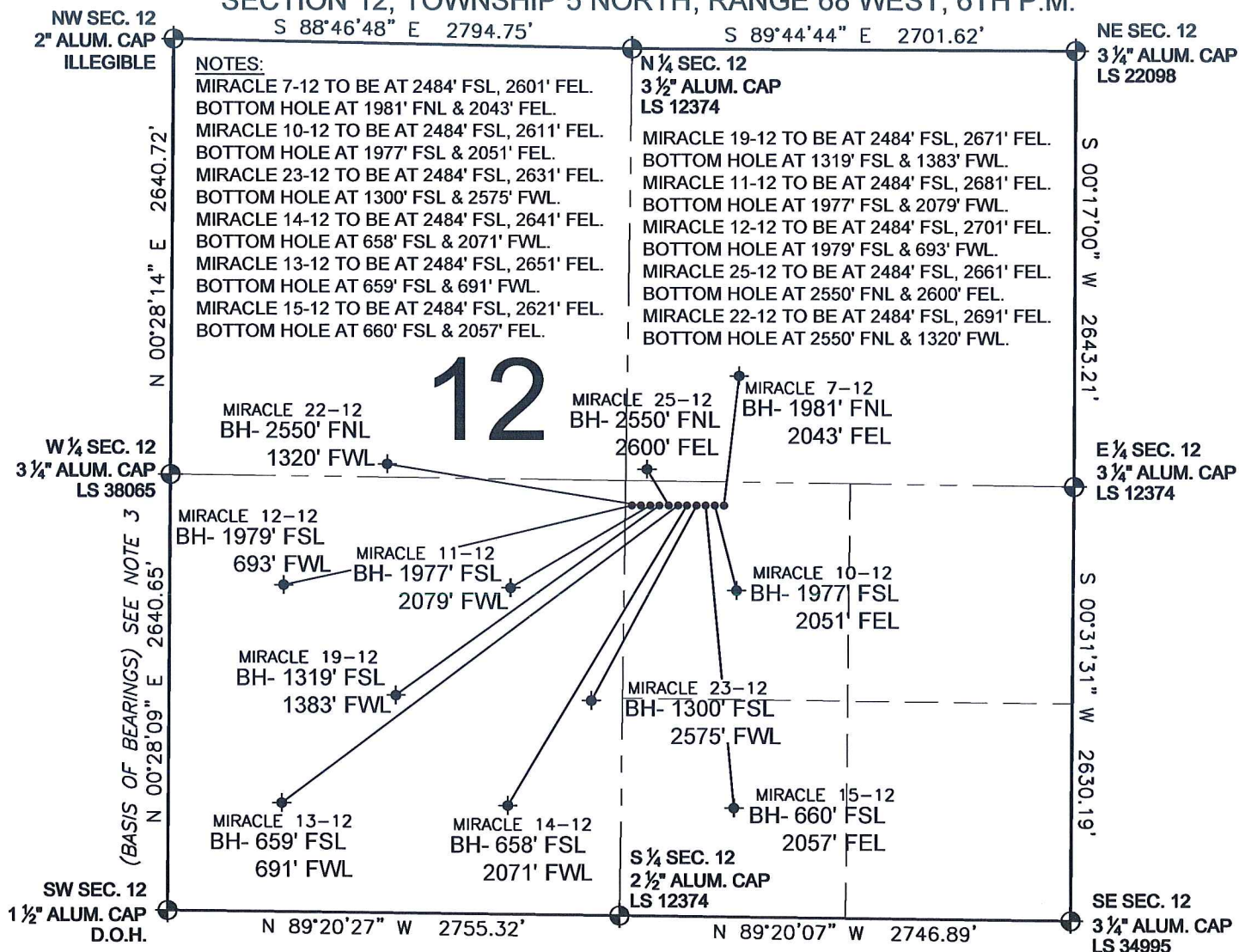



PAD DRAWING - MIRACLE 11 PAD

SECTION 12, TOWNSHIP 5 NORTH, RANGE 68 WEST, 6TH P.M.



REVISIONS		PREPARED BY:		KERR-MCGEE OIL & GAS ONSHORE LP	
INITIAL	DATE	 Petroleum Field Services, LLC 1801 W. 13th Ave. Denver, CO 80204	BY: SMF	FIELD DATE:	PAD NAME:
SMF	03-11-10			02-10-10	MIRACLE 11 PAD
				DRAWING DATE:	SURFACE LOCATION:
				02-12-10	LARIMER COUNTY, COLORADO
					NW 1/4 SE 1/4, SEC. 12, T5N, R68W