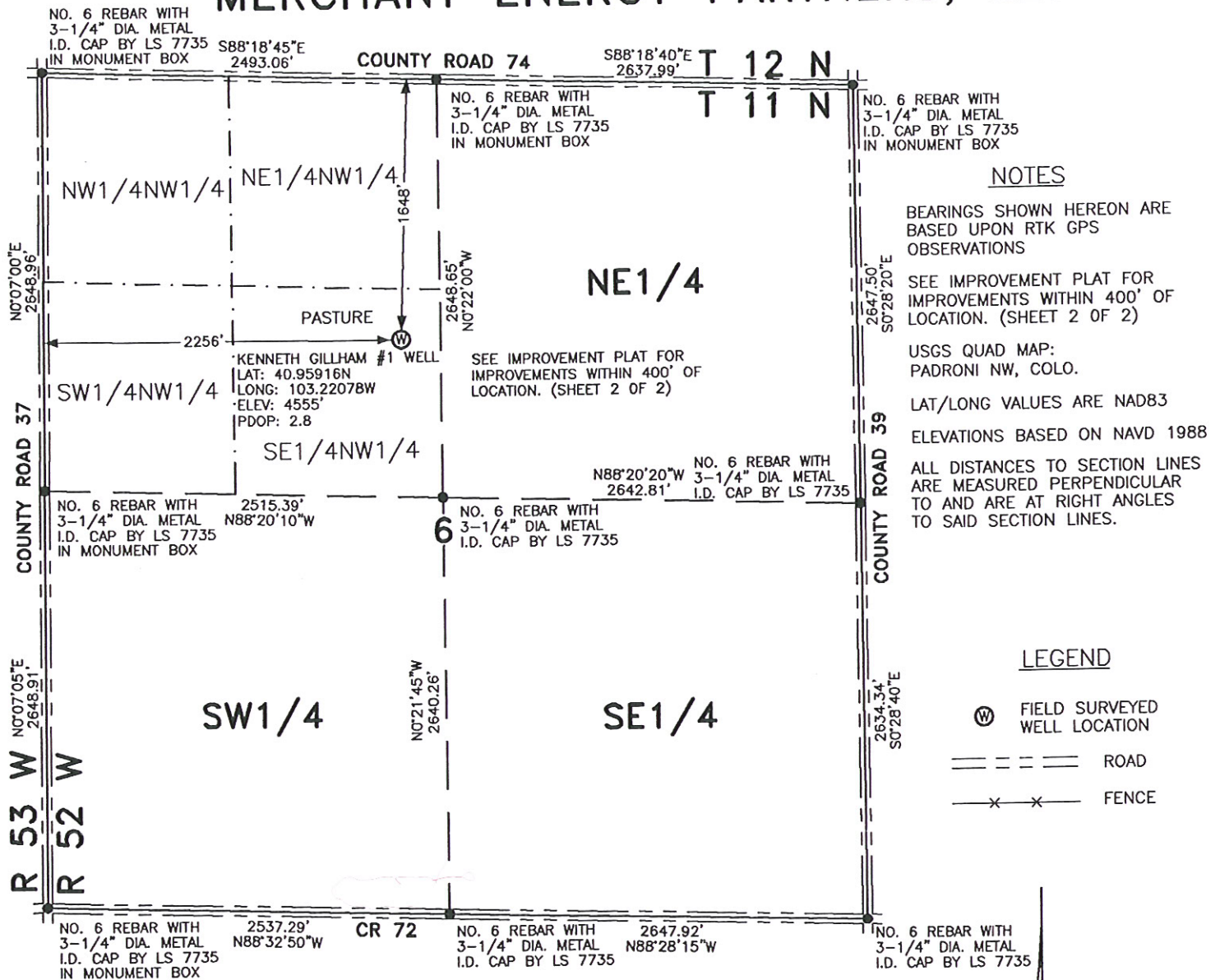


# WELL LOCATION FOR MERCHANT ENERGY PARTNERS, LLC



## NOTES

BEARINGS SHOWN HEREON ARE  
BASED UPON RTK GPS  
OBSERVATIONS

SEE IMPROVEMENT PLAT FOR  
IMPROVEMENTS WITHIN 400' OF  
LOCATION. (SHEET 2 OF 2)

USGS QUAD MAP:  
PADRONI NW, COLO.

LAT/LONG VALUES ARE NAD83

ELEVATIONS BASED ON NAVD 1988

ALL DISTANCES TO SECTION LINES  
ARE MEASURED PERPENDICULAR  
TO AND ARE AT RIGHT ANGLES  
TO SAID SECTION LINES.

## LEGEND

⊙ FIELD SURVEYED  
WELL LOCATION

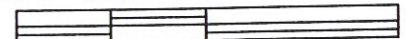
== == == ROAD

-x-x- FENCE



SCALE: 1" = 1000'

1000 500 0 1000



SCALE IN FEET

**LEIBERT-McATEE & ASSOCIATES, INC.**

P.O. BOX 442 615 SOUTH TENTH AVENUE  
STERLING, CO 80751 970-522-1960

FIELD DATE: 1-15-10	DWG DATE: 1-22-10	GPS OPERATOR: TIM LEIBERT
KENNETH GILLHAM #1	DWG NO. 1513-09	SHEET 1 OF 2

Nearest Building 770

Well 1239

Wtr well 2490 (480)

THIS WELL LOCATION PLAT HAS BEEN PREPARED FOR MERCHANT ENERGY PARTNERS, LLC,  
TO LOCATE THE KENNETH GILLHAM #1 WELL BEING 2256 FEET FROM THE WEST LINE AND  
1648 FEET FROM THE NORTH LINE IN THE SE1/4NW1/4 OF SECTION 6,  
TOWNSHIP 11 NORTH, RANGE 52 WEST OF THE 6TH P.M., LOGAN COUNTY, COLORADO.  
THE SURFACE ELEVATION AT THIS POINT IS 4555 FEET.  
THIS IS NOT A LAND SURVEY PLAT.

Loc ID 389092

Soil 91496.

Surf wtr 1990

