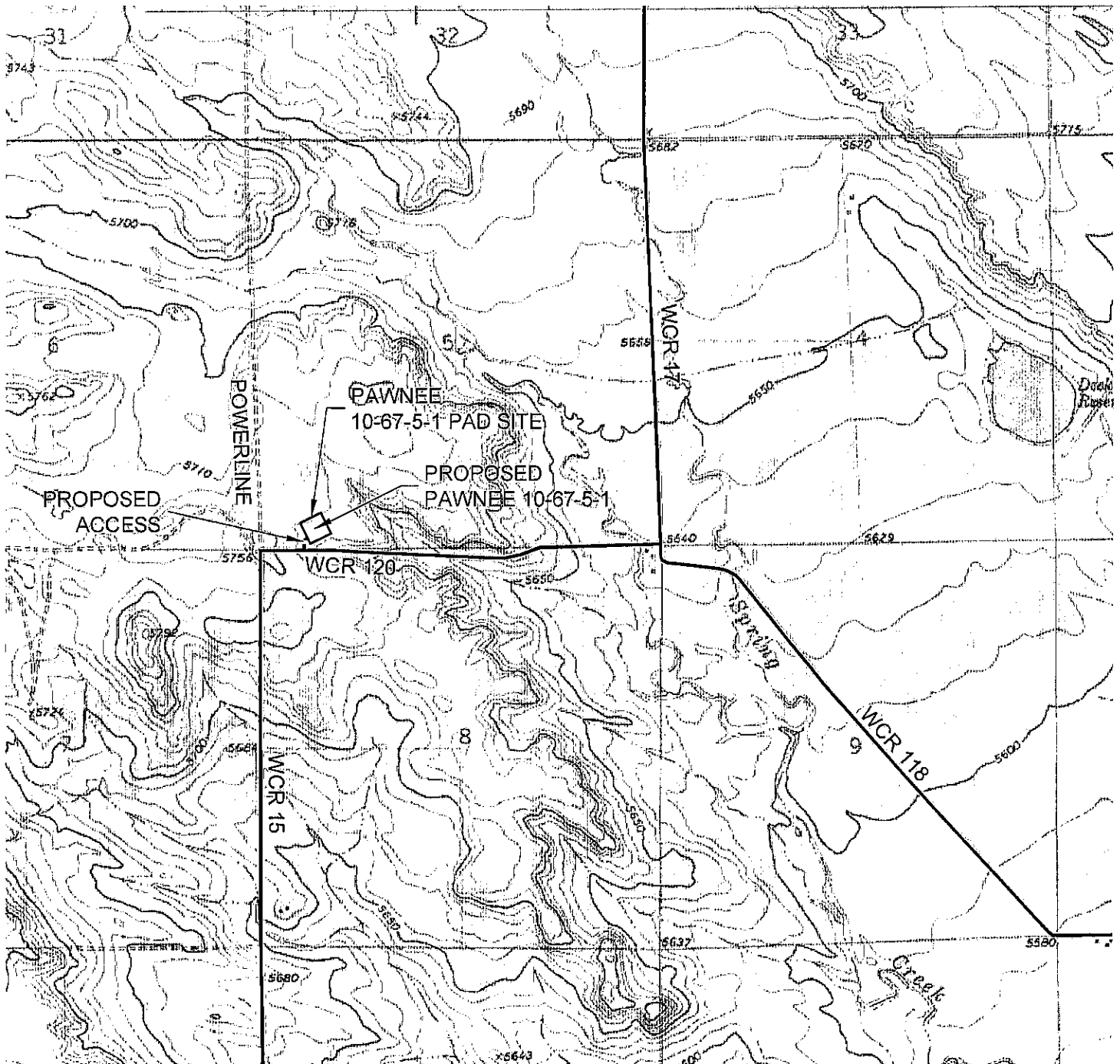


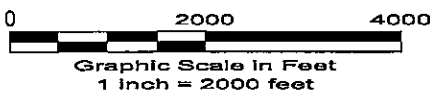
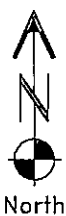
ACCESS ROAD MAP



DRIVING DIRECTIONS:

MP 0.0 - Intersection of Highway 85 & 4th Street in Nunn; North on Highway 85
 MP 4.6 - Left on WCR 108; West along WCR 108
 MP 5.3 - Cross over Railroad
 MP 5.6 - Right on WCR 27; North along WCR 27
 MP 6.7 - Left on WCR 110; West along WCR 110
 MP 12.4 - Right on WCR 15; North along WCR 15
 MP 17.4 - Right on WCR 120; East along WCR 120
 MP 17.5 - Left on access into Pawnee 10-67-5-1 Pad

5/11/10



LAND SURVEYING AND MAPPING
 LAFAYETTE - WINTER PARK
 Ph 303 666 0379 Fx 303 665 6320

RUBICON OIL & GAS LLC
 PAWNEE 10-67-5-1

SW1/4 SW1/4 SEC. 5 T10N R67W
 6th PM WELD COUNTY COLORADO