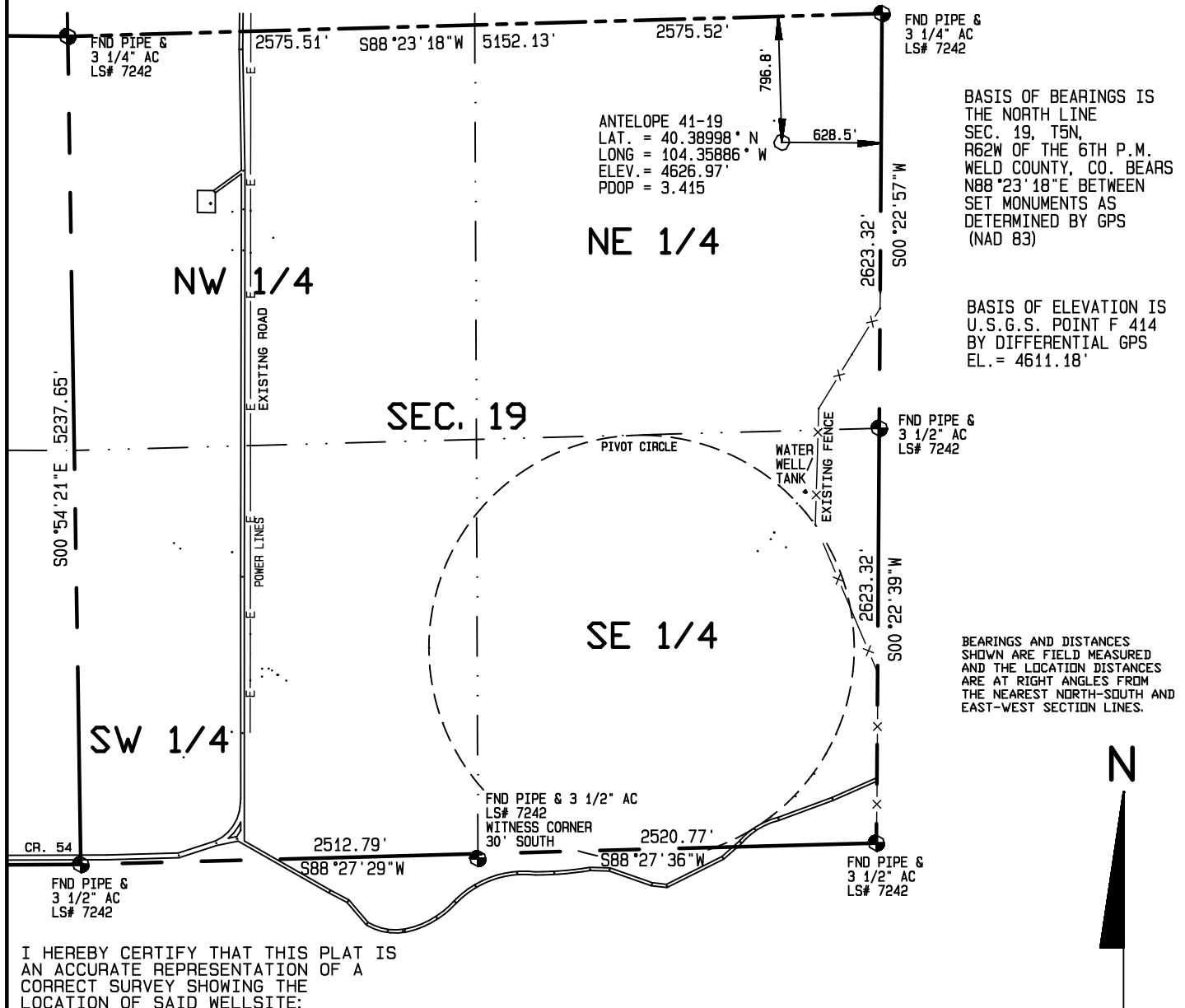
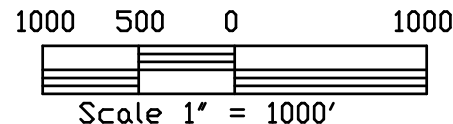


Contract Surveyors, Ltd. of Denver, Colorado has in accordance with a request from Steven Wolfe for Bonanza Creek Energy Operating Company, LLC, determined the location of ANTELOPE 41-19 to be 797' FNL & 628' FEL Section 19, Township 5 North, Range 62 West of the 6th Principal Meridian, Weld County, State of Colorado. The surface elevation at this point is 4626 feet above m.s.l. There are no visible improvements within 400 feet of the location.



I HEREBY CERTIFY THAT THIS PLAT IS AN ACCURATE REPRESENTATION OF A CORRECT SURVEY SHOWING THE LOCATION OF SAID WELLSITE:



Dan Griggs PLS# 38018

CONTRACT SURVEYORS, LTD.
 COMPLETE SURVEYING AND GLOBAL POSITIONING

2133 SOUTH BELLAIRE STREET #14
 DENVER COLORADO 80222
 (303) 756-3695



DATE OF FIELD WORK:
 27 MAY, 2010

DATE OF DRAWING:
 01 JUNE, 2010

ANTELOPE 41-19

. NE 1/4 NE 1/4 SEC. 19, T5N, R62W

BONANAZA CREEK ENERGY OPERATING COMPANY, LLC

WELD COUNTY, COLORADO

CSL# 10104-16