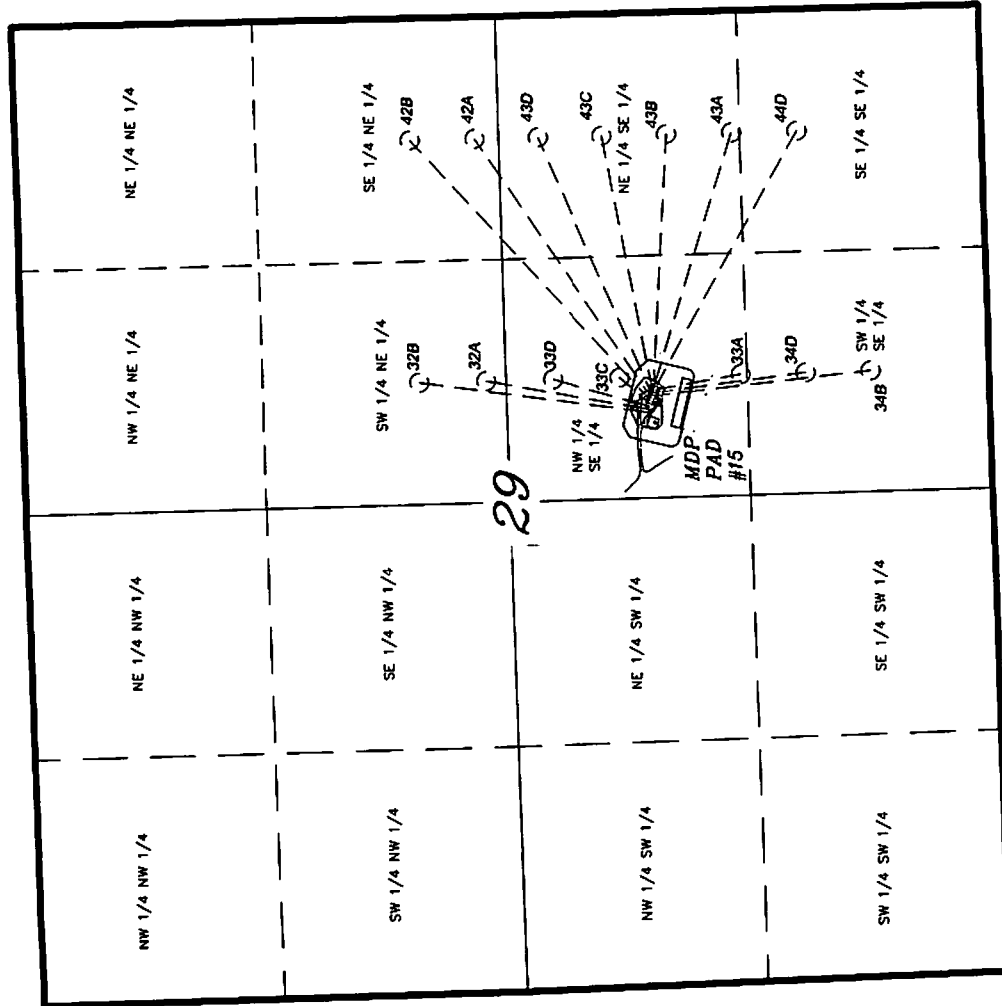


T6S, R91W, 6th P.M.

BILL BARRETT CORP.

GENERAL MUTLI WELL PLAN
SECTION DRILLING MAP
WELL PAD (MDP PAD #15)



LATITUDE & LONGITUDE Surface position of Wells (NAD 83)		
WELL	LATITUDE	LONGITUDE
440-29	39° 29' 47.81"	107° 34' 32.38"
33A-29	39° 29' 47.84"	107° 34' 32.59"
340-29	39° 29' 47.88"	107° 34' 32.77"
348-29	39° 29' 47.92"	107° 34' 32.97"
32A-29	39° 29' 48.21"	107° 34' 33.93"
32B-29	39° 29' 48.24"	107° 34' 34.13"
43A-29	39° 29' 47.90"	107° 34' 32.35"
43B-29	39° 29' 47.94"	107° 34' 32.54"
43C-29	39° 29' 47.98"	107° 34' 32.74"
43D-29	39° 29' 48.02"	107° 34' 32.94"
42A-29	39° 29' 48.05"	107° 34' 33.14"
42B-29	39° 29' 48.09"	107° 34' 33.34"
33C-29	39° 29' 48.13"	107° 34' 33.53"
33D-29	39° 29' 48.17"	107° 34' 33.73"

LATITUDE & LONGITUDE Bottom hole position of Wells (NAD 83)		
WELL	LATITUDE	LONGITUDE
440-29	39° 29' 40.15"	107° 34' 14.59"
33A-29	39° 29' 43.26"	107° 34' 31.57"
340-29	39° 29' 39.81"	107° 34' 31.49"
348-29	39° 29' 36.35"	107° 34' 31.42"
32A-29	39° 29' 56.99"	107° 34' 31.86"
32B-29	39° 30' 00.59"	107° 34' 31.93"
43A-29	39° 29' 43.63"	107° 34' 14.66"
43B-29	39° 29' 47.10"	107° 34' 14.73"
43C-29	39° 29' 50.98"	107° 34' 14.81"
43D-29	39° 29' 54.05"	107° 34' 14.88"
42A-29	39° 29' 57.47"	107° 34' 14.95"
42B-29	39° 30' 00.95"	107° 34' 15.02"
33C-29	39° 29' 49.76"	107° 34' 31.70"
33D-29	39° 29' 53.39"	107° 34' 31.78"

TRI STATE LAND SURVEYING & CONSULTING

180 NORTH VERNAL AVE. - VERNAL, UTAH 84078

(435) 781-2501

DATE SURVEYED: 01-05-10		SURVEYED BY: C.D.S.		SHEET 1	
DATE DRAWN: 01-06-10		DRAWN BY: F.T.M.		OF 12	
REVISED: 04-06-10 F.T.M.		SCALE: 1" = 1000'			

BILL BARRETT CORP.

DETAIL MULTI WELL PLAN WELL PAD INTERFERENCE PLAT WELL PAD (MDP PAD #15) Section 29, T6S, R91W, 6th P.M.

TOP HOLE FOOTAGES

GGU FEDERAL 44D-29-691
1811' FSL & 2046' FEL
GGU SWANSON 33A-29-691
1815' FSL & 2062' FEL
GGU FEDERAL 34D-29-691
1819' FSL & 2077' FEL
GGU FEDERAL 34B-29-691
1824' FSL & 2093' FEL
GGU SWANSON 32A-29-691
1854' FSL & 2167' FEL
GGU SWANSON 32B-29-691
1858' FSL & 2183' FEL
GGU FEDERAL 43A-29-691
1821' FSL & 2044' FEL
GGU FEDERAL 43B-29-691
1825' FSL & 2059' FEL
GGU FEDERAL 43C-29-691
1829' FSL & 2074' FEL
GGU FEDERAL 43D-29-691
1833' FSL & 2090' FEL
GGU FEDERAL 42A-29-691
1837' FSL & 2105' FEL
GGU FEDERAL 42B-29-691
1842' FSL & 2121' FEL
GGU SWANSON 33C-29-691
1846' FSL & 2136' FEL
GGU SWANSON 33D-29-691
1850' FSL & 2152' FEL

BOTTOM HOLE FOOTAGES

GGU FEDERAL 44D-29-691
1008' FSL & 664' FEL
GGU SWANSON 33A-29-691
1350' FSL & 1990' FEL
GGU FEDERAL 34D-29-691
1000' FSL & 1990' FEL
GGU FEDERAL 34B-29-691
650' FSL & 1990' FEL
GGU SWANSON 32A-29-691
2529' FNL & 1990' FEL
GGU SWANSON 32B-29-691
2165' FNL & 1990' FEL
GGU FEDERAL 43A-29-691
1360' FSL & 664' FEL
GGU FEDERAL 43B-29-691
1712' FSL & 664' FEL
GGU FEDERAL 43C-29-691
2064' FSL & 664' FEL
GGU FEDERAL 43D-29-691
2416' FSL & 664' FEL
GGU FEDERAL 42A-29-691
2504' FNL & 664' FEL
GGU FEDERAL 42B-29-691
2152' FNL & 664' FEL
GGU SWANSON 33C-29-691
2008' FSL & 1990' FEL
GGU SWANSON 33D-29-691
2375' FSL & 1990' FEL

RELATIVE COORDINATES (From top hole to bottom hole)

WELL	NORTH	EAST
44D-29	-772'	1397'
33A-29	-464'	80'
34D-29	-817'	102'
34B-29	-1171'	124'
32A-29	890'	161'
32B-29	1250'	170'
43A-29	-430'	1388'
43B-29	-82'	1397'
43C-29	267'	1406'
43D-29	615'	1415'
42A-29	957'	1424'
42B-29	1305'	1433'
33C-29	166'	143'
33D-29	529'	152'

LATITUDE & LONGITUDE Existing position of Wells (NAD 83)

WELL	LATITUDE	LONGITUDE
10-29	39° 29' 47.96"	107° 34' 33.19"
14-29	39° 29' 48.00"	107° 34' 33.38"
15-29	39° 29' 48.03"	107° 34' 33.57"

LATITUDE & LONGITUDE Surface position of Wells (NAD 83)

WELL	LATITUDE	LONGITUDE
44D-29	39° 29' 47.81"	107° 34' 32.38"
33A-29	39° 29' 47.84"	107° 34' 32.58"
34D-29	39° 29' 47.88"	107° 34' 32.77"
34B-29	39° 29' 47.92"	107° 34' 32.97"
32A-29	39° 29' 48.21"	107° 34' 33.93"
32B-29	39° 29' 48.24"	107° 34' 34.13"
43A-29	39° 29' 47.90"	107° 34' 32.35"
43B-29	39° 29' 47.94"	107° 34' 32.54"
43C-29	39° 29' 47.98"	107° 34' 32.74"
43D-29	39° 29' 48.02"	107° 34' 32.94"
42A-29	39° 29' 48.05"	107° 34' 33.14"
42B-29	39° 29' 48.09"	107° 34' 33.34"
33C-29	39° 29' 48.13"	107° 34' 33.53"
33D-29	39° 29' 48.17"	107° 34' 33.73"

LATITUDE & LONGITUDE Bottom hole position of Wells (NAD 83)

WELL	LATITUDE	LONGITUDE
44D-29	39° 29' 40.15"	107° 34' 14.59"
33A-29	39° 29' 43.26"	107° 34' 31.57"
34D-29	39° 29' 39.81"	107° 34' 31.49"
34B-29	39° 29' 36.35"	107° 34' 31.42"
32A-29	39° 29' 56.99"	107° 34' 31.86"
32B-29	39° 30' 00.59"	107° 34' 31.93"
43A-29	39° 29' 43.63"	107° 34' 14.66"
43B-29	39° 29' 47.10"	107° 34' 14.73"
43C-29	39° 29' 50.58"	107° 34' 14.81"
43D-29	39° 29' 54.06"	107° 34' 14.88"
42A-29	39° 29' 57.47"	107° 34' 14.95"
42B-29	39° 30' 00.95"	107° 34' 15.02"
33C-29	39° 29' 49.76"	107° 34' 31.70"
33D-29	39° 29' 53.39"	107° 34' 31.78"

SURVEYED BY: C.D.S. DATE SURVEYED: 01-05-10
DRAWN BY: F.T.M. DATE DRAWN: 01-06-10
SCALE: 1" = 60' REVISED: M.W. - 04-15-10

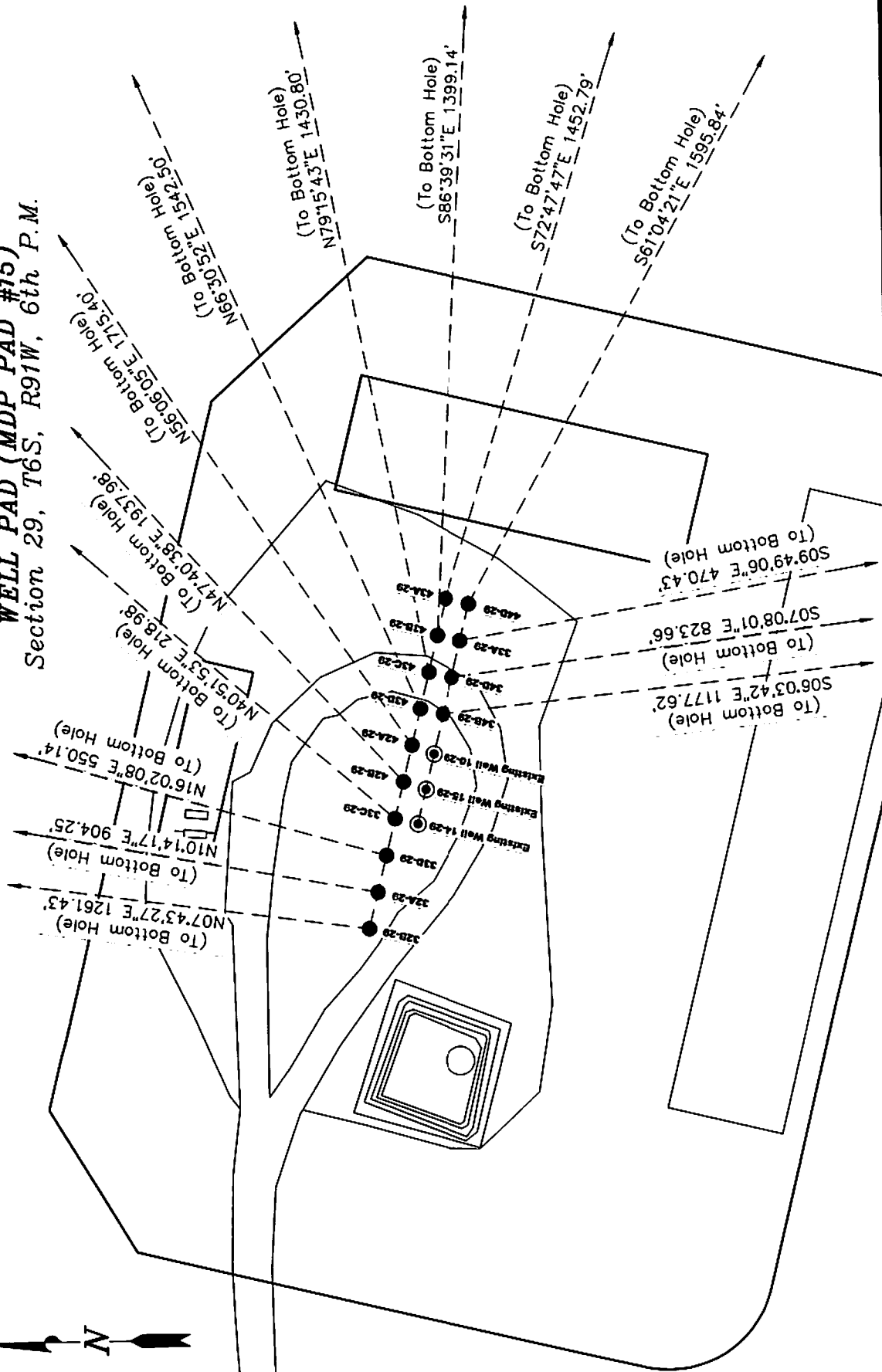
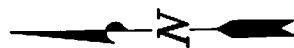
Tri State
Land Surveying, Inc.
180 NORTH VERNAL AVE. VERNAL, UTAH 84078

(435) 781-2501

SHEET
3b
OF 12

BILL BARRETT CORP.

DETAIL MULTI WELL PLAN WELL PAD INTERFERENCE PLAT
WELL PAD (MDP PAD #15)
Section 29, T6S, R91W, 6th P.M.



SHEET	(435) 781-2501	3a	OF 12
Tri State	Land Surveying, Inc.	180 NORTH VERNAL AVE.	VERNAL, UTAH 84078
SURVEYED BY: C.D.S.	DATE SURVEYED: 01-05-10		
DRAWN BY: F.T.M.	DATE DRAWN: 01-06-10		
SCALE: 1" = 60'	REVISED: F.T.M. 04-06-10		