

TABLE 1
SOIL SAMPLE ANALYTICAL RESULTS
DUNHAM 41-5 (API No. 05-123-20228)
WELD COUNTY
PETROLEUM DEVELOPMENT CORPORATION

Sample ID	Depth (ft bgs)	Date Sampled	Benzene (mg/kg)	Toluene (mg/kg)	Ethyl- benzene (mg/kg)	Xylenes (mg/kg)	TPH (mg/kg)
E01	2	09/16/2008	NA	NA	NA	NA	<100
N01	2	09/16/2008	NA	NA	NA	NA	<100
N02	2	09/16/2008	NA	NA	NA	NA	<100
S01	2	09/16/2008	NA	NA	NA	NA	<100
S02	2	09/16/2008	NA	NA	NA	NA	130
W01	2	09/16/2008	NA	NA	NA	NA	<100
COGCC Sensitive Area Standard			NS	NS	NS	NS	1000

Notes: < - less than stated laboratory reporting limit
TPH - Total Petroleum Hydrocarbons (C6-C28)
API - American Petroleum Institute
Bold numbers indicate result equalled or exceeded standard.
COGCC Sensitive Area Standard is taken from COGCC Table 910-1, prior to April 1, 2009.

NA - Not Analyzed
NS - No Standard
mg/kg - milligrams per kilogram
ft bgs - feet below ground surface

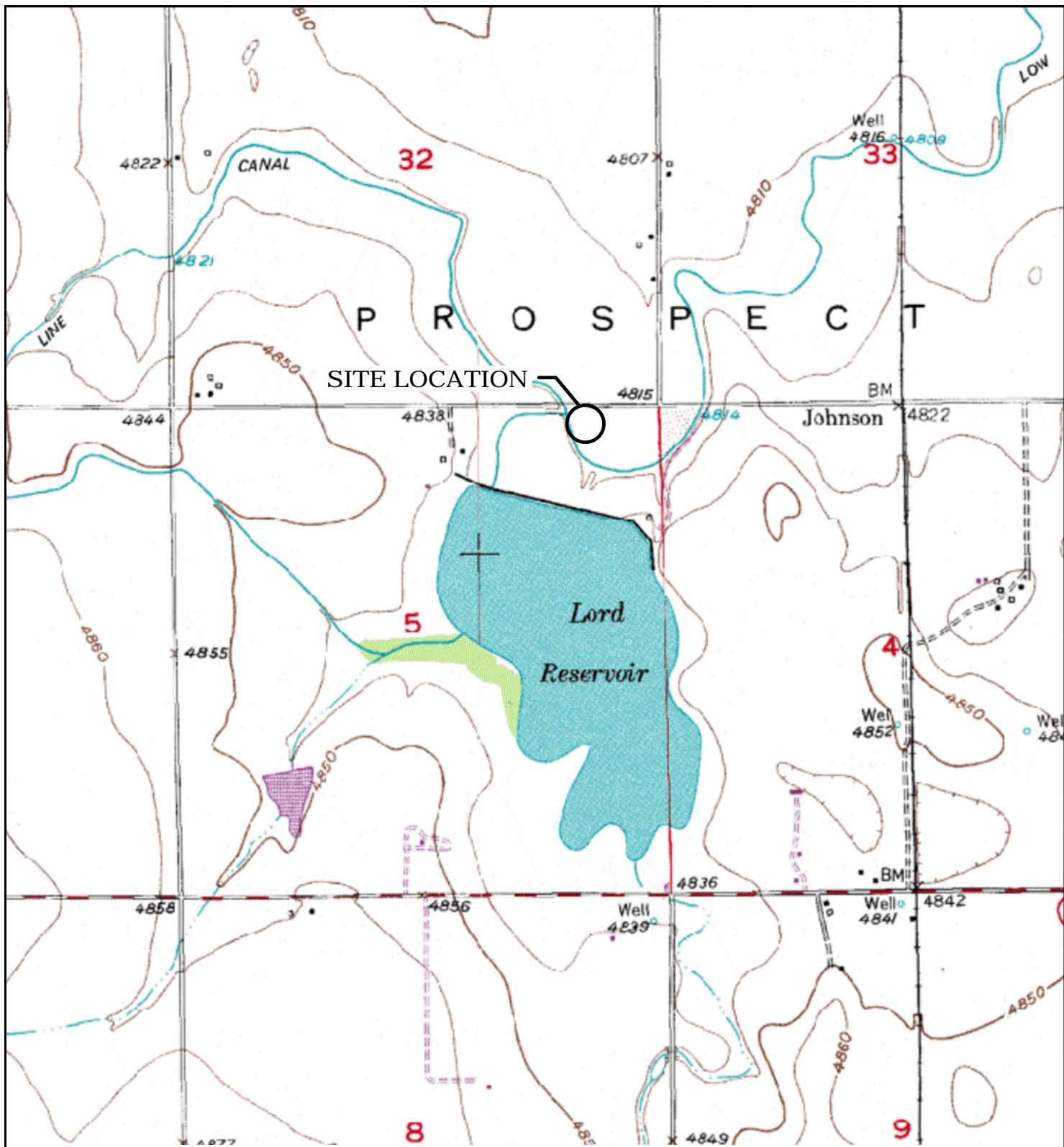


TABLE 2
GROUNDWATER ANALYTICAL RESULTS AND FIELD PARAMETERS
DUNHAM 41-5 (API No. 123-20228)
WELD COUNTY, COLORADO
PETROLEUM DEVELOPMENT CORPORATION

Sample ID	Date Sampled	Benzene (ug/L)	Toluene (ug/L)	Ethyl-benzene (ug/L)	Xylenes (ug/L)	Depth to Water (ft btoc)
GW01	09/16/2008	7900	6600	290	2700	NM
MW01	11/05/2008	<1.0	<1.0	<1.0	<1.0	6.67
	02/12/2009	<1.0	<1.0	<1.0	<1.0	11.47
MW02	11/05/2008	<1.0	<1.0	<1.0	<1.0	6.49
	02/12/2009	<1.0	<1.0	<1.0	<1.0	11.29
MW03	11/05/2008	<1.0	<1.0	<1.0	<1.0	6.89
	02/12/2009	<1.0	<1.0	<1.0	<1.0	11.65
MW04	03/04/2009	<1.0	<1.0	<1.0	<1.0	12.09
	06/22/2009	<1.0	<1.0	<1.0	<1.0	4.94
	09/17/2009	<1.0	<1.0	<1.0	<1.0	4.78
	12/10/2009	<1.0	<1.0	<1.0	<1.0	7.64
MW05	03/04/2009	7.6	<1.0	<1.0	<1.0	9.53
	06/22/2009	<1.0	<1.0	<1.0	<1.0	2.37
MW06	03/04/2009	<1.0	<1.0	<1.0	<1.0	9.45
	06/22/2009	<1.0	<1.0	<1.0	<1.0	2.38
	09/17/2009	<1.0	<1.0	<1.0	<1.0	2.16
MW07	05/06/2009	<1.0	<1.0	<1.0	<1.0	NM
	06/22/2009	<1.0	<1.0	<1.0	<1.0	NM
	09/17/2009	<1.0	<1.0	<1.0	<1.0	5.44
	12/10/2009	<1.0	<1.0	<1.0	<1.0	8.32
Basic Standards for Groundwater:		5	560	700	1400	

Notes: < - less than ug/L - micrograms per Liter NA - Not Analyzed/Not Available
ft btoc - feet below top of casing NM - Not measured API - American Petroleum Institute
Basic Standards for Groundwater are taken from the Colorado Department of Health and Environment -
Water Quality Control Commission Regulation 41, effective 4/1/2009.
Bold numbers indicate result equaled or exceeded standard.





LEGEND

○ SITE LOCATION



0 375 750 1500
FEET

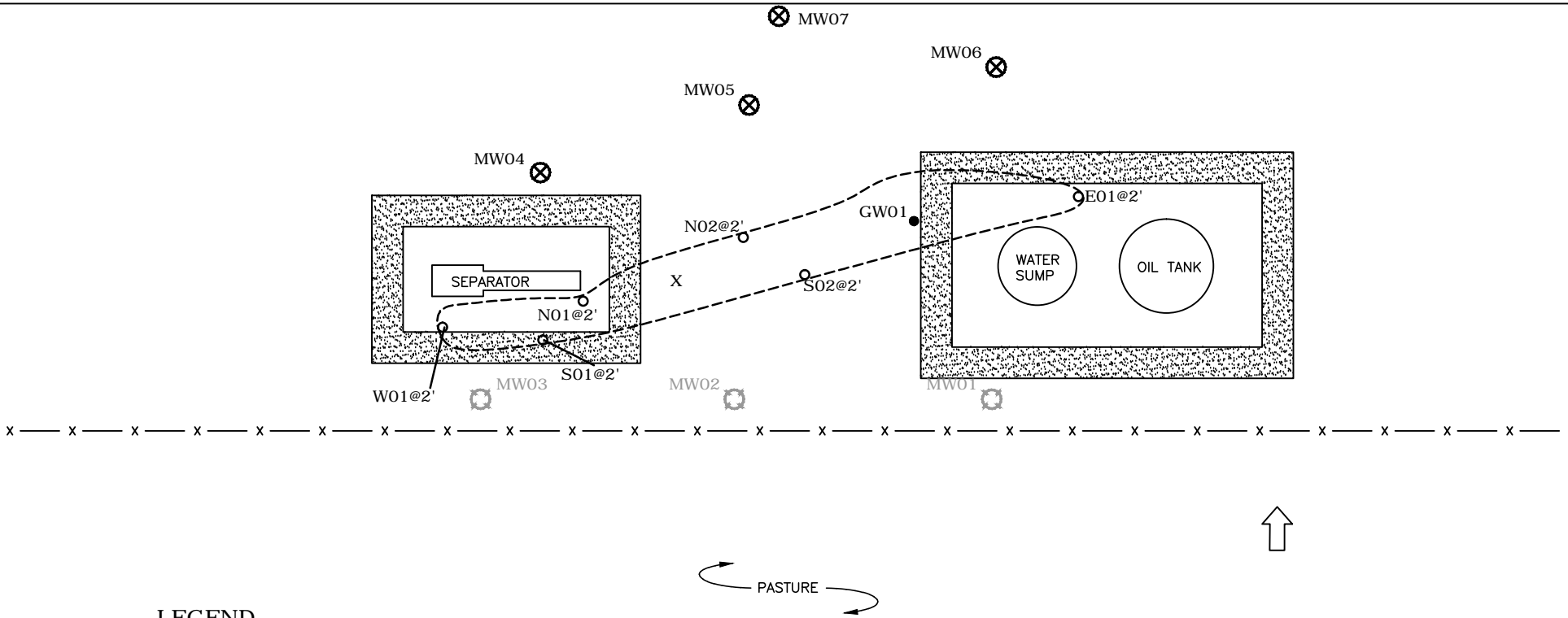
SOURCE: TOPOZONE.COM
USGS 7.5' QUADRANGLE
(NAD27)

FIGURE 1
SITE LOCATION MAP
DUNHAM 41-5
NENE 5 1N 63W
WELD COUNTY, CO
PETROLEUM DEVELOPMENT CORPORATION



PDC0816301_SL 9/08

COUNTY ROAD 14



LEGEND

- MW04 MONITORING WELL LOCATION
- MW01 MONITORING WELL LOCATION (REMOVED FROM SAMPLING PLAN)
- N01@2' SOIL SAMPLE LOCATION
- GW01 WATER SAMPLE LOCATION
- BERM
- X RELEASE LOCATION
- EXTENT OF EXCAVATION
- x — FENCE
- ESTIMATED GROUNDWATER FLOW DIRECTION

FIGURE 2
SITE LOCATION MAP
DUNHAM 41-5
NENE 5 1N 63W
WELD COUNTY, CO
PETROLEUM DEVELOPMENT CORPORATION

