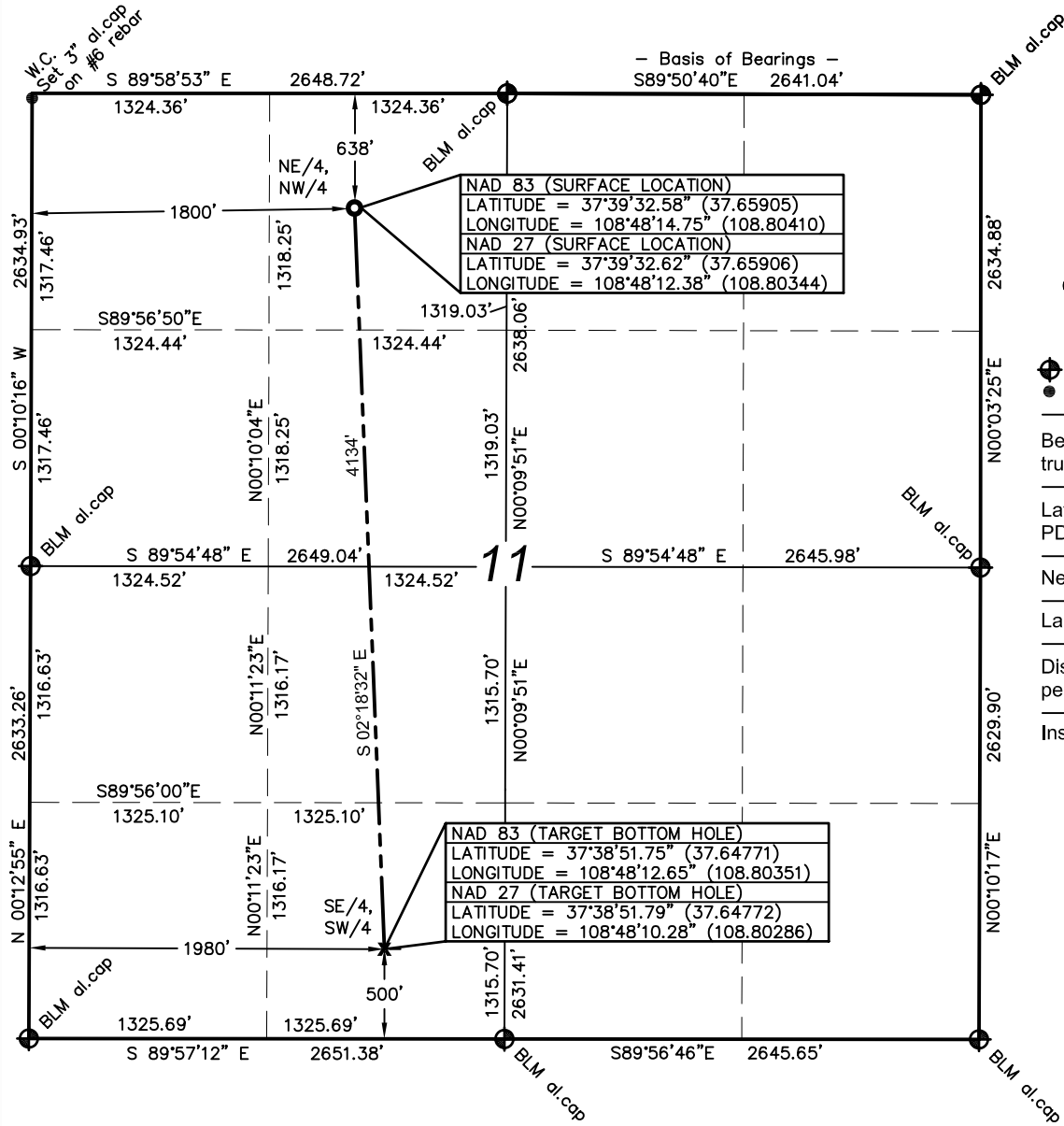


Well Location Plat



Bill Barrett Corporation
Daves 3S-11-39-18

638' FNL & 1800' FWL (surface location)
NE/4 NW/4, Section 11, T39N, R18W, NMPM
Dolores County, Colorado
6701.0' ground. el. (NAVD88)
500' FSL & 1980' FWL (bottom hole)
SE/4 SW/4, Section 11, T39N, R18W, NMPM
Dolores County, Colorado

Date of Survey: 3/23/10
Date of Plat: 3/24/10



KNOW ALL MEN BY THESE PRESENTS that I, GERALD G. HUDDLESTON, do hereby certify that this plat was prepared from field notes of an actual survey made by me or under my supervision and that the same is true and accurate to the best of my knowledge and belief.



ANDERSON
ENGINEERING COMPANY, INC.
(801) 972-6222
www.andersoneng.com