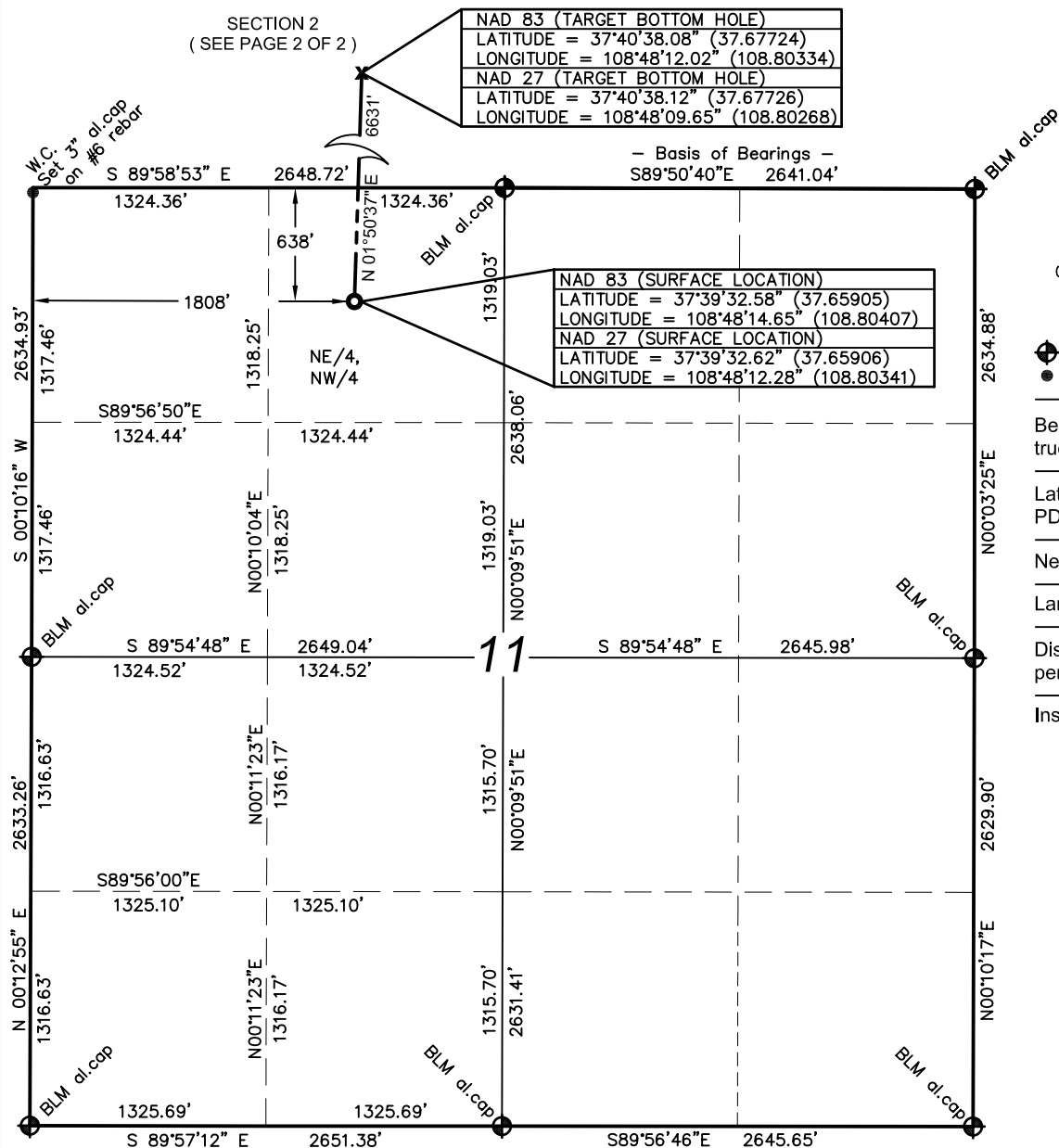


Well Location Plat



- Standard monument
- #6 rebar & aluminum cap

Bearings from GPS
true north

Lat/Lon from GPS observations
PDOP: 1.1

Nearest Public Road: 630'

Land use: Irrigated Crop

Distances/dimensions are perpendicular to section lines

Instrument operator: T. Barbee

Bill Barrett Corporation
Daves 3N-11-39-18

638' FNL & 1808' FWL (surface location)
NE/4 NW/4, Section 11, T39N, R18W, NMPM
Dolores County, Colorado
6701.2' ground. el. (NAVD88)
500' FNL & 1980' FWL (bottom hole)
Lot 7, Section 2, T39N, R18W, NMPM
Dolores County, Colorado

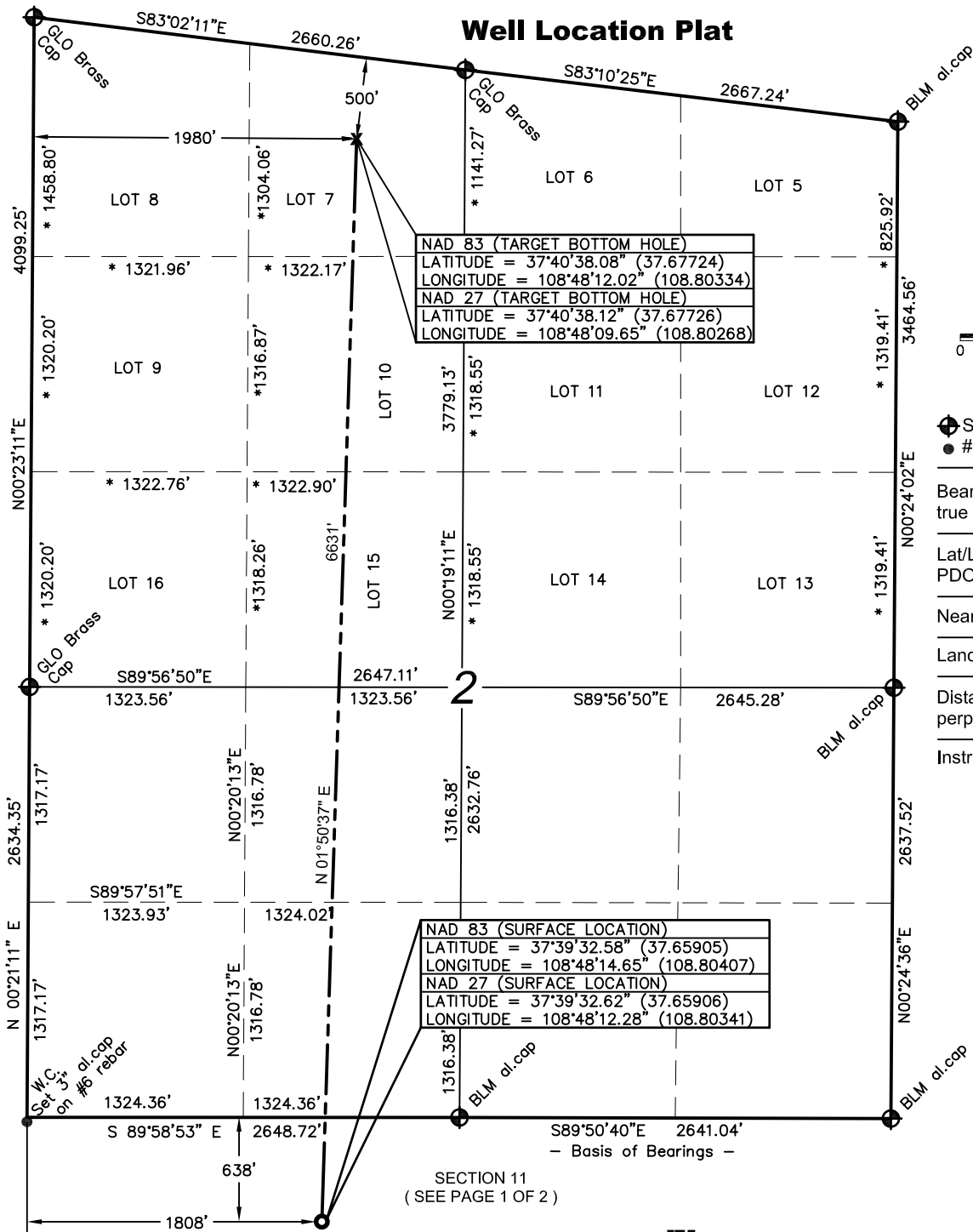


KNOW ALL MEN BY THESE PRESENTS that I, GERALD G. HUDDLESTON, do hereby certify that this plat was prepared from field notes of an actual survey made by me or under my supervision and that the same is true and accurate to the best of my knowledge and belief. _____



ANDERSON
ENGINEERING COMPANY, INC.
(801) 972-6222
www.andersoneng.com

Well Location Plat



Scale in Feet
 0 500 1000

Standard monument
 ● #6 rebar & aluminum cap

Bearings from GPS
 true north

Lat/Lon from GPS observations
 PDOP: 1.1

Nearest Public Road: 630'

Land use: **Irrigated Crop**

Distances/dimensions are
 perpendicular to section lines

Instrument operator: T. Barbee



KNOW ALL MEN BY THESE PRESENTS that I, GERALD G. HUDDLESTON, do hereby certify that this plat was prepared from field notes of an actual survey made by me or under my supervision and that the same is true and accurate to the best of my knowledge and belief.

