

PETROLEUM DEVELOPMENT CORP.

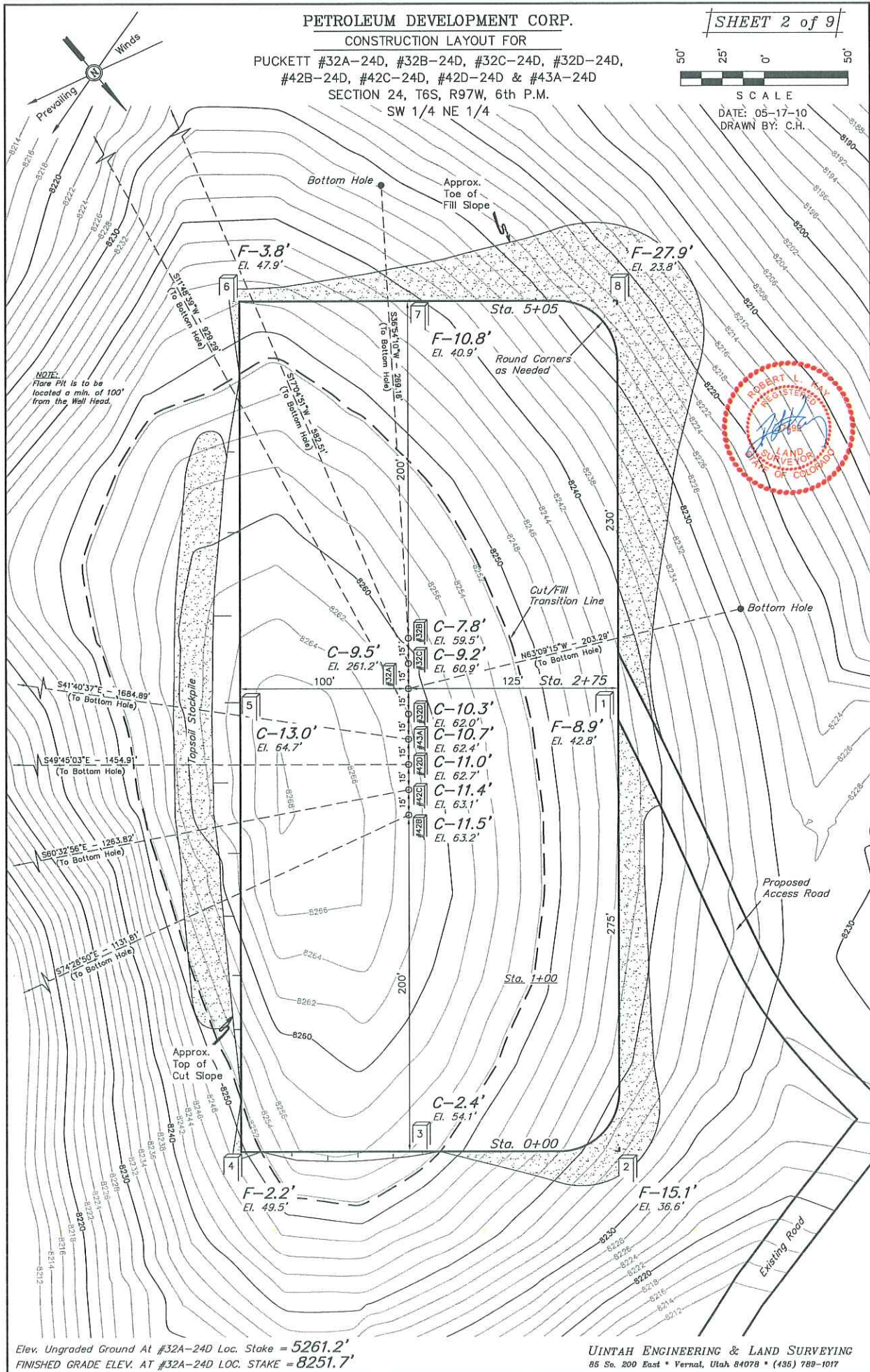
CONSTRUCTION LAYOUT FOR

PUCKETT #32A-24D, #32B-24D, #32C-24D, #32D-24D,
#42B-24D, #42C-24D, #42D-24D & #43A-24D
SECTION 24, T6S, R97W, 6th P.M.
SW 1/4 NE 1/4

SHEET 2 of 9



SCALE
DATE: 05-17-10
DRAWN BY: C.H.



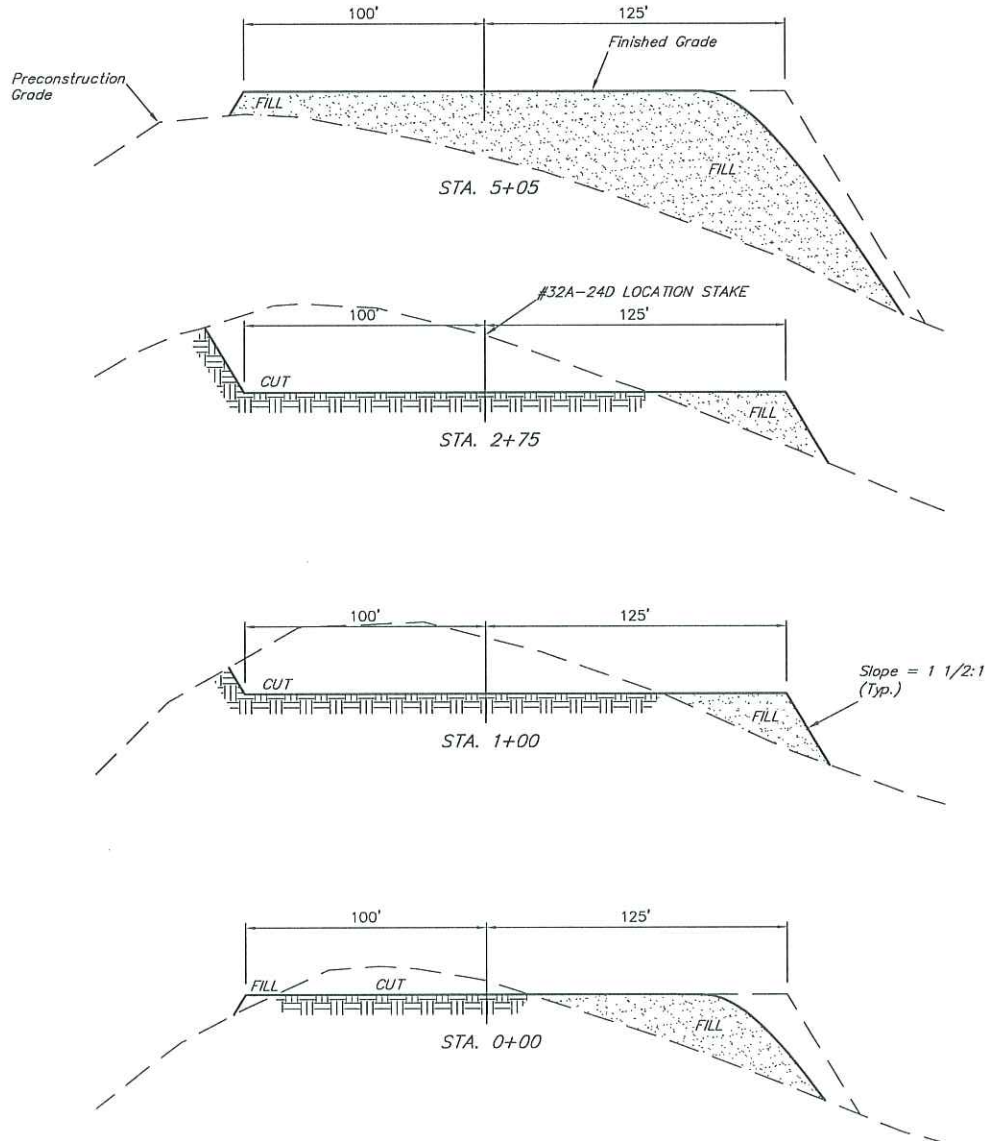
Elev. Ungraded Ground At #32A-24D Loc. Stake = 5261.2'
FINISHED GRADE ELEV. AT #32A-24D LOC. STAKE = 8251.7'

UINTAH ENGINEERING & LAND SURVEYING
85 So. 200 East • Vernal, Utah 84078 • (435) 789-1017

1" = 20'
X-Section
Scale
1" = 50'
DATE: 05-17-10
DRAWN BY: C.H.

PETROLEUM DEVELOPMENT CORP.
CONSTRUCTION LAYOUT CROSS SECTION FOR
PUCKETT #32A-24D, #32B-24D, #32C-24D, #32D-24D,
#42B-24D, #42C-24D, #42D-24D & #43A-24D
SECTION 24, T6S, R97W, 6th P.M.
SW 1/4 NE 1/4

SHEET 3 of 9



NOTE:
Topsoil should not be
Stripped Below Finished
Grade on Substructure Area.

APPROXIMATE ACREAGES
WELL SITE DISTURBANCE = ± 3.379 ACRES
ACCESS ROAD DISTURBANCE = ± 0.202 ACRES
TOTAL = ± 3.581 ACRES

* NOTE:
FILL QUANTITY INCLUDES
5% FOR COMPACTION

APPROXIMATE YARDAGES

(6") Topsoil Stripping = 2,710 Cu. Yds.
Remaining Location = 19,730 Cu. Yds.
TOTAL CUT = 22,440 CU.YDS.
FILL = 19,730 CU.YDS.

EXCESS MATERIAL = 2,710 Cu. Yds.
Topsoil = 2,710 Cu. Yds.

EXCESS UNBALANCE = 0 Cu. Yds.
(After Interim Rehabilitation)

UINTAH ENGINEERING & LAND SURVEYING
85 So. 200 East • Vernal, Utah 84078 • (435) 789-1017