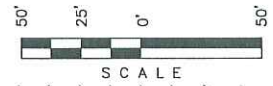
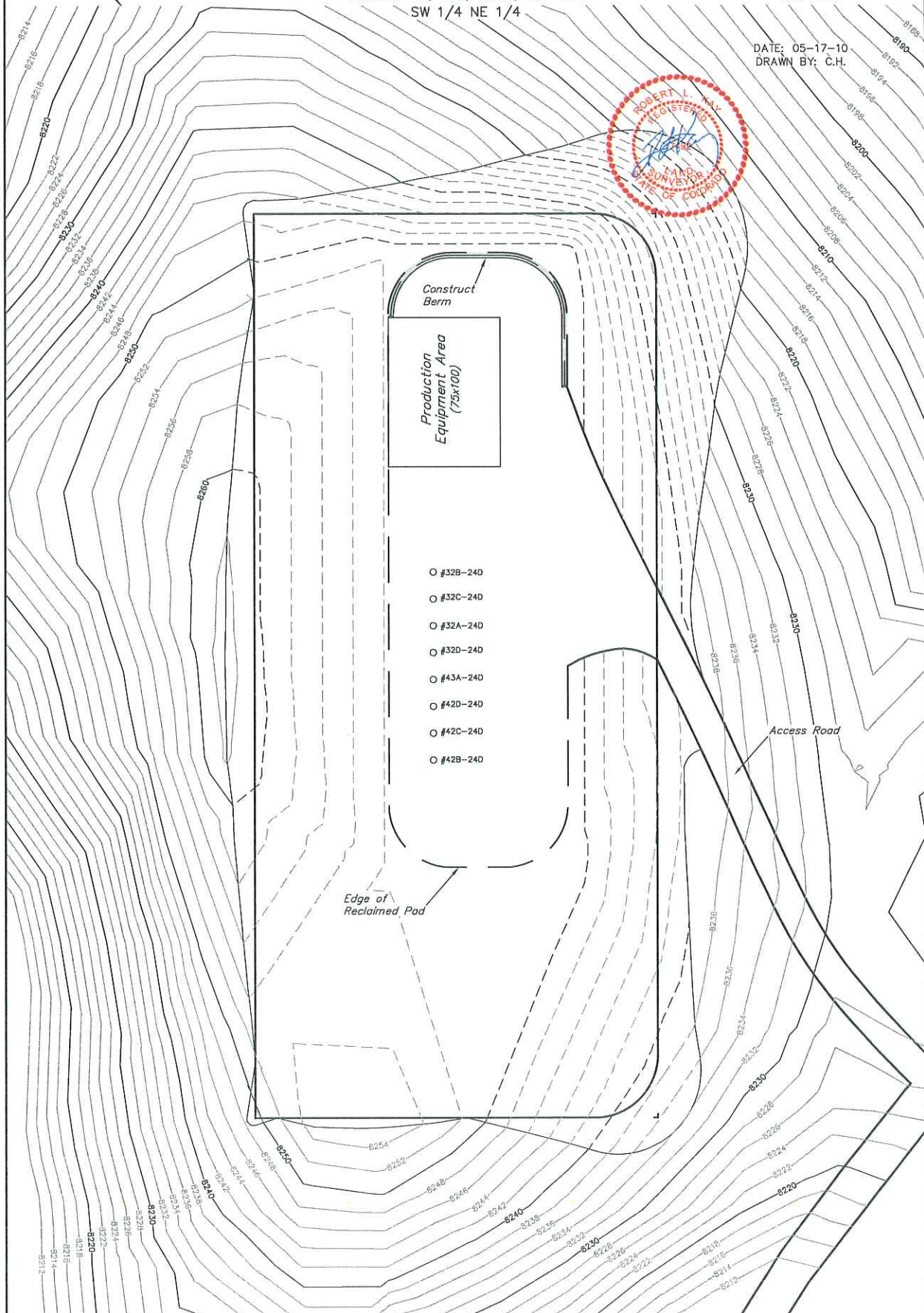
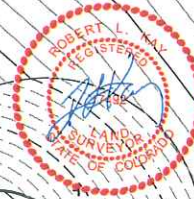


PETROLEUM DEVELOPMENT CORP.
 RECLAMATION PAD & PROD. EQUIPMENT LAYOUT FOR
 PUCKETT #32A-24D, #32B-24D, #32C-24D, #32D-24D,
 #42B-24D, #42C-24D, #42D-24D & #43A-24D
 SECTION 24, T6S, R97W, 6th P.M.
 SW 1/4 NE 1/4

SHEET 5 of 9



DATE: 05-17-10
 DRAWN BY: C.H.



APPROXIMATE ACREAGES
 TOTAL RECLAIMED AREA = ± 2.591 ACRES
 UN-RECLAIMED AREA = ± 0.788 ACRES

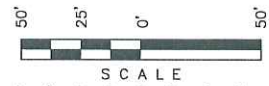
UINTAH ENGINEERING & LAND SURVEYING
 85 So. 200 East • Vernal, Utah 84078 • (435) 789-1017

PETROLEUM DEVELOPMENT CORP.

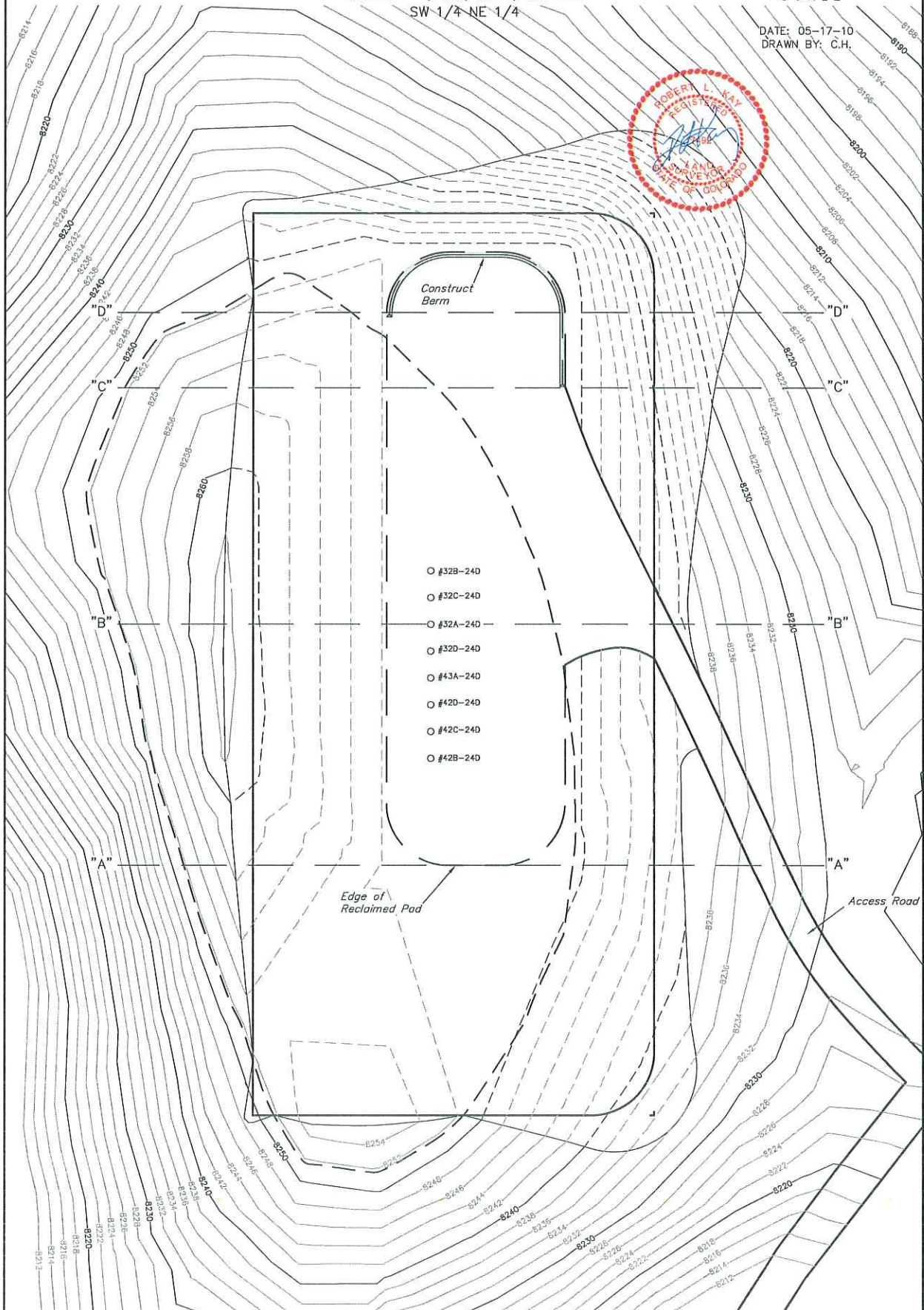
FINAL RECLAMATION PAD FOR

PUCKETT #32A-24D, #32B-24D, #32C-24D, #32D-24D,
#42B-24D, #42C-24D, #42D-24D & #43A-24D
SECTION 24, T6S, R97W, 6th P.M.
SW 1/4 NE 1/4

SHEET 6 of 9



DATE: 05-17-10
DRAWN BY: C.H.



APPROXIMATE ACREAGES
TOTAL RECLAIMED AREA = ± 2.591 ACRES
UN-RECLAIMED AREA = ± 0.788 ACRES

UINTAH ENGINEERING & LAND SURVEYING
85 So. 200 East • Vernal, Utah 84078 • (435) 789-1017

1" = 20'
X-Section
Scale
1" = 50'
DATE: 05-17-10
DRAWN BY: C.H.

PETROLEUM DEVELOPMENT CORP.
FINAL RECLAMATION CROSS SECTIONS FOR
PUCKETT #32A-24D, #32B-24D, #32C-24D, #32D-24D,
#42B-24D, #42C-24D, #42D-24D & #43A-24D
SECTION 24, T6S, R97W, 6th P.M.
SW 1/4 NE 1/4

SHEET 7 of 9

