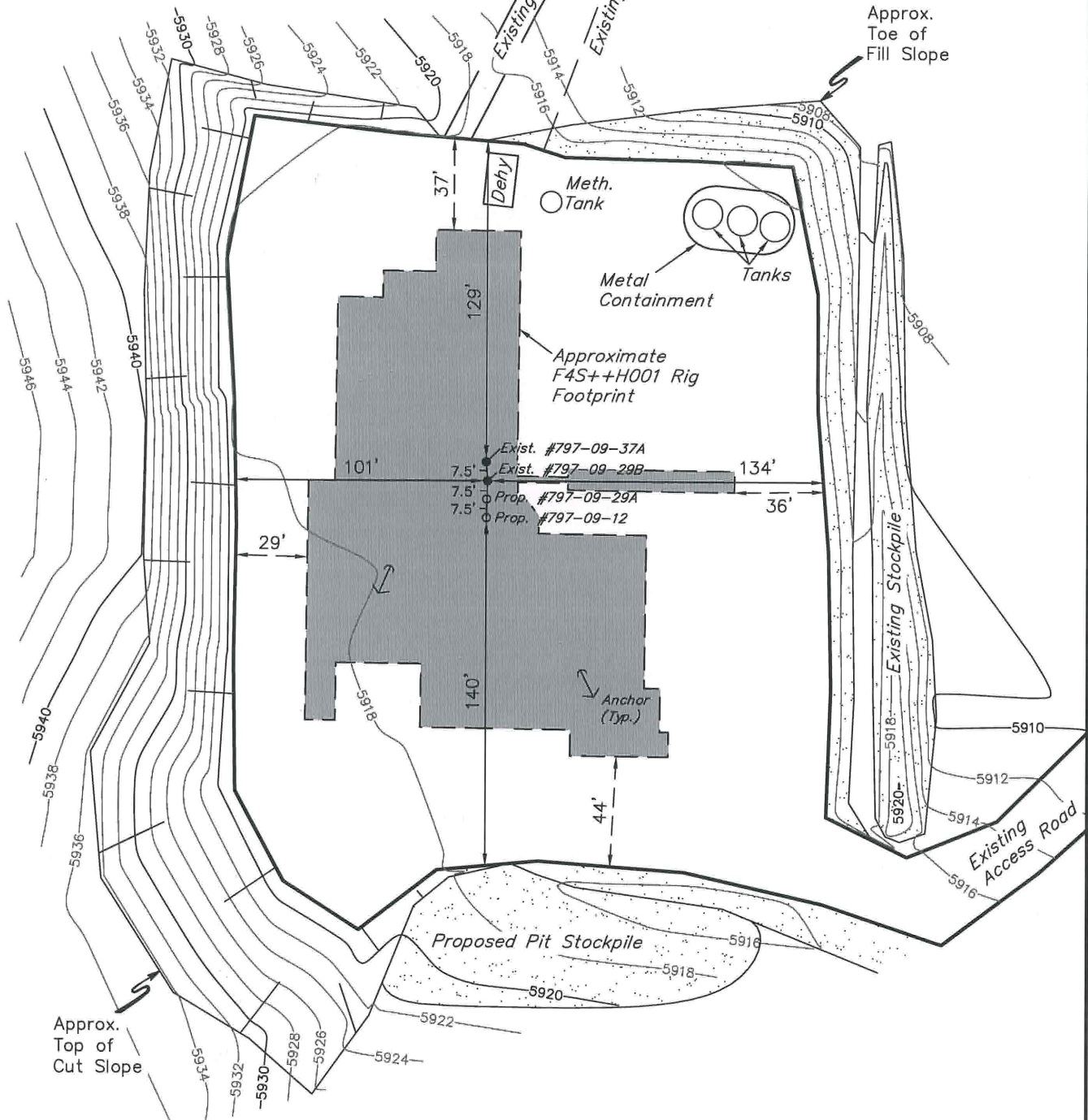


AS-BUILT FOR  
SHELL #797-09-12, #797-09-29A,  
#797-09-29B & #797-09-37A  
SECTION 9, T7S, R97W, 6th P.M.  
TRACT 94 / /

SHELL #797-09-12, #797-09-29A,  
#797-09-29B & #797-09-37A  
SECTION 9, T7S, R97W, 6th P.M.  
TRACT 94 , /



UINTAH ENGINEERING & LAND SURVEYING  
85 So. 200 East \* Vernal, Utah 84078 \* (435) 789-1017

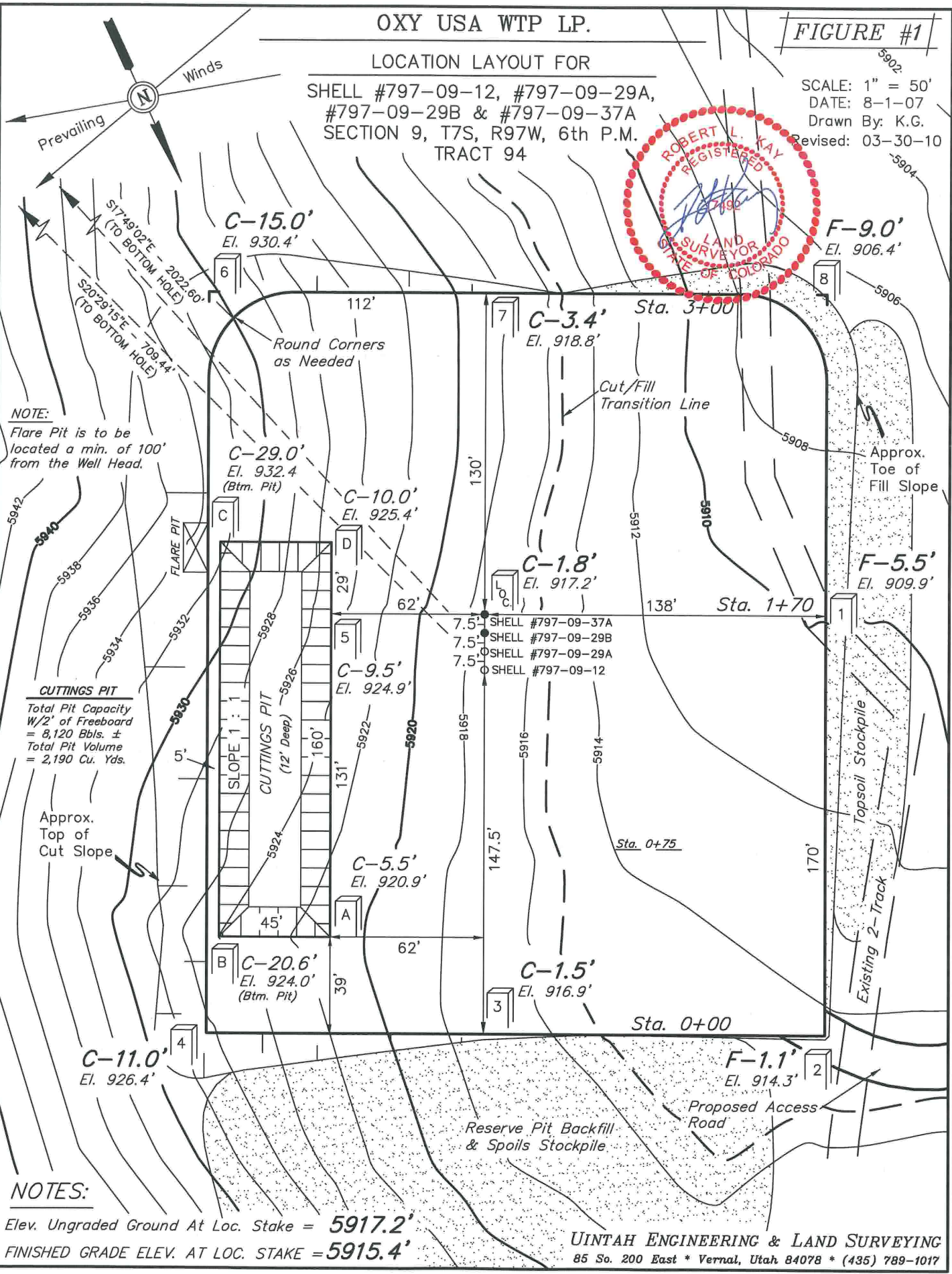
# OXY USA WTP LP.

FIGURE #1

## LOCATION LAYOUT FOR

SHELL #797-09-12, #797-09-29A,  
#797-09-29B & #797-09-37A  
SECTION 9, T7S, R97W, 6th P.M.  
TRACT 94

SCALE: 1" = 50'  
DATE: 8-1-07  
Drawn By: K.G.  
Revised: 03-30-10



**NOTE:**  
Flare Pit is to be located a min. of 100' from the Well Head.

**CUTTINGS PIT**  
Total Pit Capacity W/2' of Freeboard = 8,120 Bbls. ±  
Total Pit Volume = 2,190 Cu. Yds.

### NOTES:

Elev. Ungraded Ground At Loc. Stake = 5917.2'  
FINISHED GRADE ELEV. AT LOC. STAKE = 5915.4'

UINTAH ENGINEERING & LAND SURVEYING  
85 So. 200 East \* Vernal, Utah 84078 \* (435) 789-1017