

DALEY LAND SURVEYING, INC.

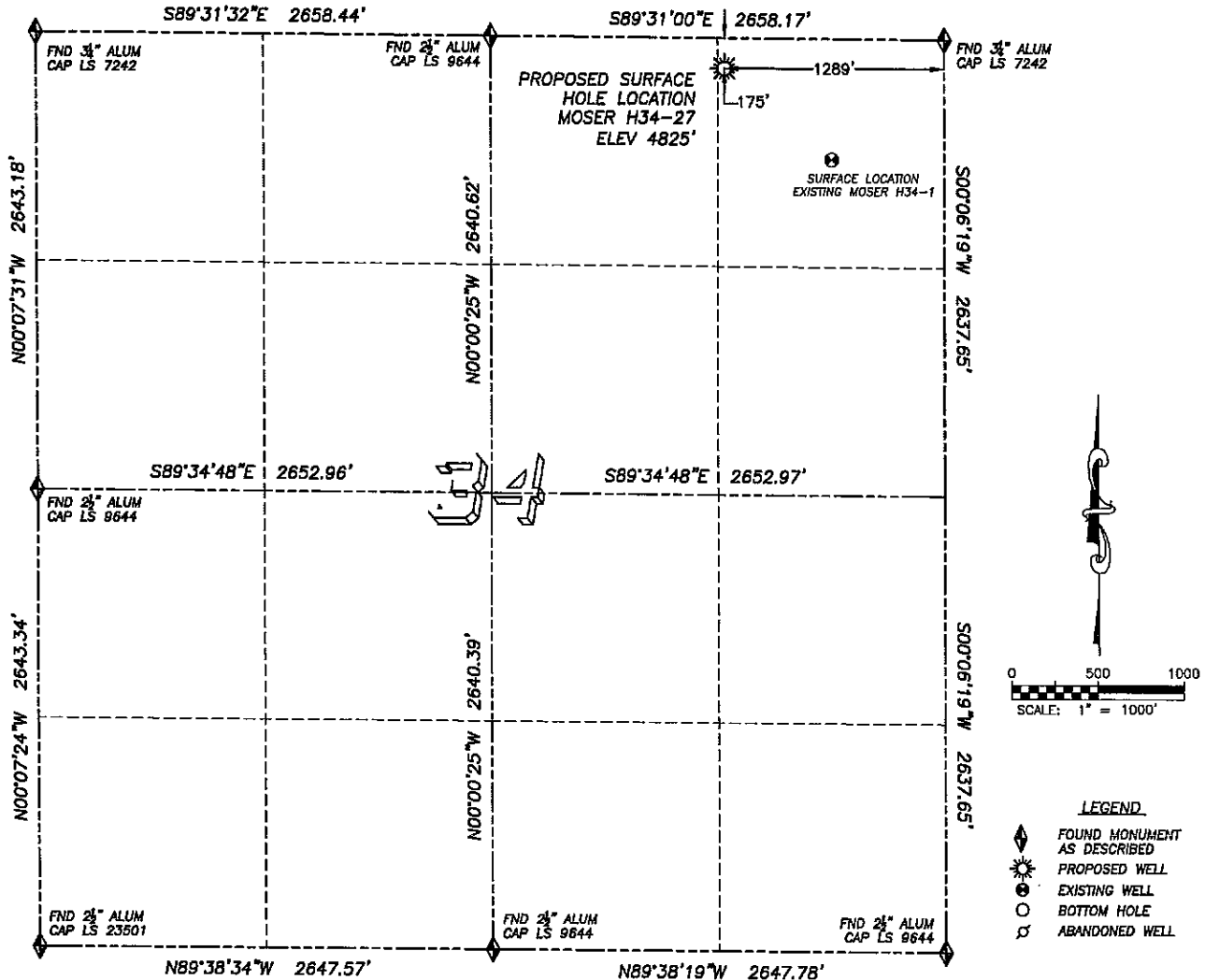
PARKER, CO. 80134

303 953 9841

WELL LOCATION CERTIFICATE

MOSER H34-27

SECTION 34, TOWNSHIP 3 NORTH, RANGE 65 WEST OF THE 6TH PRINCIPAL MERIDIAN

**NAD 83 LATITUDE AND LONGITUDE****MOSER H34-27 SURFACE HOLE:**

LATITUDE: N40.18860°
 LONGITUDE: W104.64477°
 ELEVATION: 4825'
 PDOP 1.5
 175' FNL, 1289' FEL

NEAREST EXISTING WELL:

MOSER H34-1 SURFACE HOLE
 LATITUDE: N40.18715°
 LONGITUDE: W104.64253°
 ELEVATION: 4826'
 820' SOUTHEAST

QUARTER/QUARTER: NE4/NE4

NEAREST APPARENT PROPERTY LINE:
 175'± NORTH

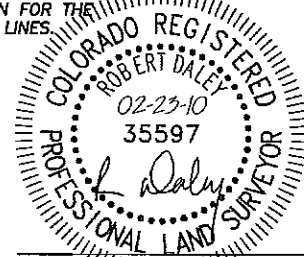
IN ACCORDANCE WITH A REQUEST FROM BILL BETSON OF NOBLE ENERGY INC., DALEY LAND SURVEYING, INC. HAS DETERMINED THE SURFACE LOCATION OF THE MOSER H34-27 WELL TO BE 175' FNL, 1289' FEL, AS MEASURED AT NINETY (90) DEGREES FROM THE SECTION LINES OF SECTION 34, TOWNSHIP 3 NORTH, RANGE 65 WEST OF THE 6TH PRINCIPAL MERIDIAN, WELD COUNTY COLORADO.

I HEREBY CERTIFY THAT THIS WELL LOCATION CERTIFICATE WAS PREPARED BY ME OR UNDER MY DIRECT SUPERVISION, THAT THE WORK WAS COMPLETED ON 2/22/2010 FOR AND ON BEHALF OF NOBLE ENERGY, INC., AND THAT THIS MAP DOES NOT REPRESENT A BOUNDARY SURVEY, IT IS NOT A LAND SURVEY PLAT OR AN IMPROVEMENT SURVEY PLAT AND IT IS NOT TO BE RELIED UPON FOR THE ESTABLISHMENT OF FENCE, BUILDING OR OTHER FUTURE IMPROVEMENT LINES.

NOTES:

- 1) BASIS OF BEARING FOR THIS MAP IS ASSUMED AND BASED UPON GPS OBSERVATIONS MADE BETWEEN MONUMENTS LOCATED AT THE NORTHEAST AND NORTH QUARTER CORNERS OF SECTION 34, T.3N., R.65W., AND ALL BEARINGS SHOWN HEREON ARE RELATIVE THERETO.
- 2) HORIZONTAL DATUM IS NAD83.
- 3) VERTICAL DATUM IS NAVD88. ELEVATIONS ARE DERIVED FROM GPS-RTK OBSERVATIONS PROCESSED THROUGH OPUS, UTILIZING THE GEOID03 MODEL.
- 4) SEE VISIBLE IMPROVEMENTS EXHIBIT FOR VISIBLE IMPROVEMENTS WITHIN 600' OF PROPOSED SURFACE HOLE LOCATION
- 5) SURFACE USE: AGRICULTURAL

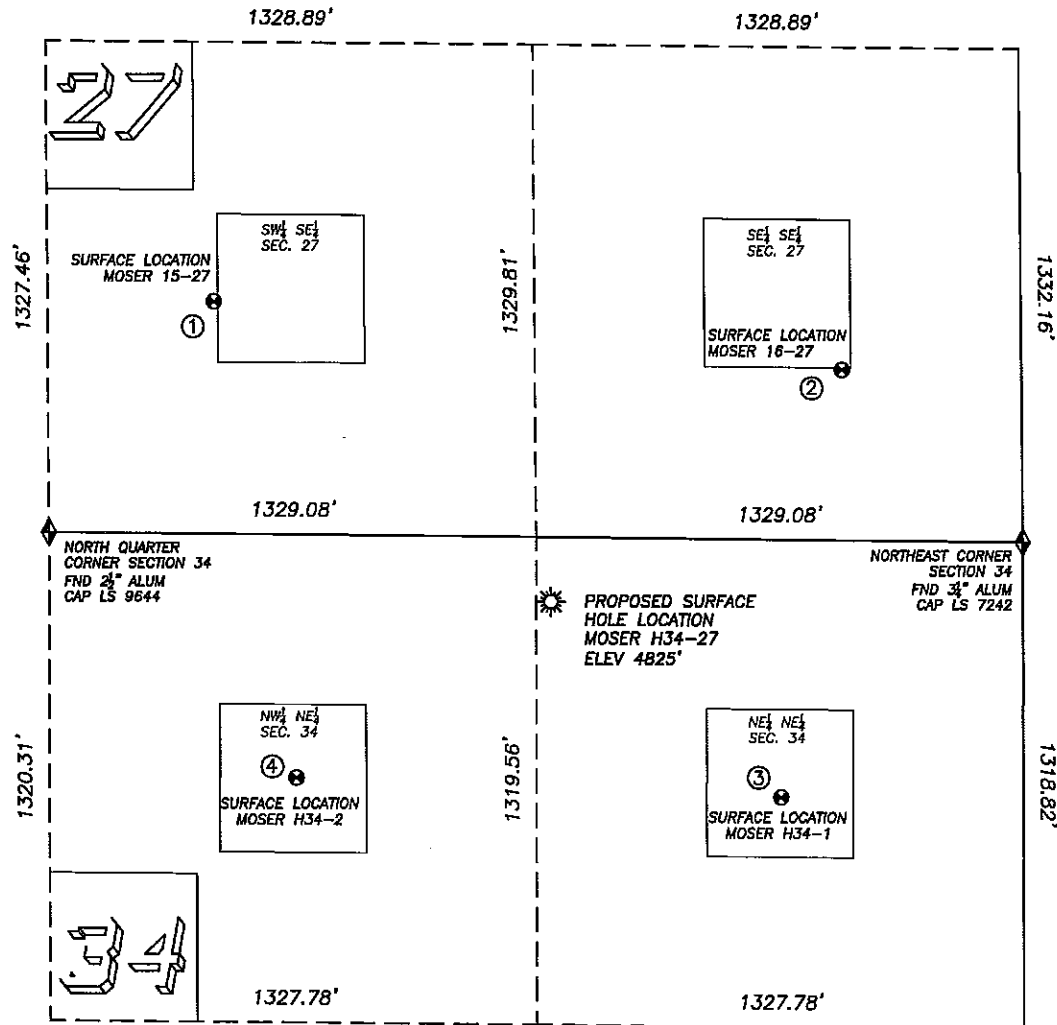
NOTICE: According to Colorado law you MUST commence any legal action based upon any defect in this W.L.C. within three years after you first discover such defect. In no event may any action based upon any such defect in this W.L.C. be commenced more than ten years from the date of the certification shown hereon.



FOR AND ON BEHALF OF
 DALEY LAND SURVEYING, INC.,
 Robert Daley, PLS 35597

SITE SKETCH MOSER H34-27

SECTION 34, TOWNSHIP 3 NORTH, RANGE 65 WEST OF THE 6TH PRINCIPAL MERIDIAN



0 500
SCALE: 1" = 500'

LEGEND

- ◆ FOUND MONUMENT AS DESCRIBED
- ☀ PROPOSED WELL
- ⊙ EXISTING WELL
- BOTTOM HOLE
- ⊘ ABANDONED WELL

①

MOSER 15-27
SW/SE SEC. 27
627' FSL, 2204' FEL
1224' NW OF PROPOSED
SURFACE HOLE LOCATION
LAT. N40.19082°
LONG. W104.64806°
EL: 4824'
PDOP 2.0

②

MOSER 16-27
SE/SE SEC. 27
461' FSL, 488' FEL
1017' NE OF PROPOSED
SURFACE HOLE LOCATION
LAT. N40.19032°
LONG. W104.64192°
EL: 4821'
PDOP 1.8

③

MOSER H34-1
NE/NE SEC. 34
697' FNL, 660' FEL
820' SE OF PROPOSED
SURFACE HOLE LOCATION
LAT. N40.18715°
LONG. W104.64253°
EL: 4826'
PDOP 2.0

④

MOSER H34-2
NW/NE SEC. 34
658' FNL, 1984' FEL
844' SW OF PROPOSED
SURFACE HOLE LOCATION
LAT. N40.18729°
LONG. W104.64726°
EL: 4828'
PDOP 1.8

NOTES:

- 1) THIS DOES NOT REPRESENT A BOUNDARY SURVEY
- 2) THE LATITUDES AND LONGITUDES SHOWN ARE REFERENCED TO NAD83
- 3) DATUM FOR ELEVATION IS NAVD88. ELEVATIONS ARE DERIVED FROM GPS-RTK OBSERVATIONS PROCESSED THROUGH OPUS, UTILIZING THE GEOID03 MODEL