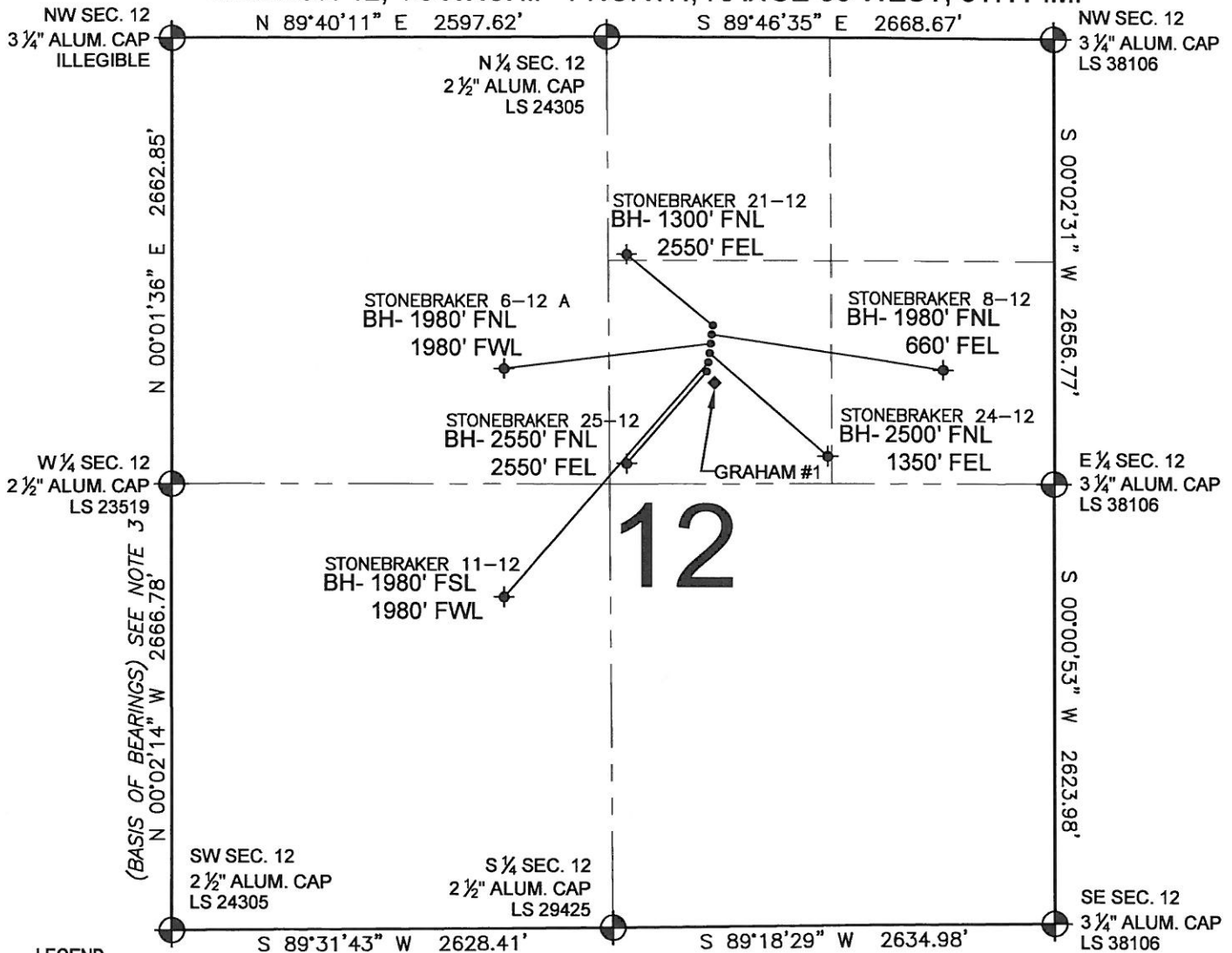


PAD DRAWING

SECTION 12, TOWNSHIP 1 NORTH, RANGE 68 WEST, 6TH P.M.

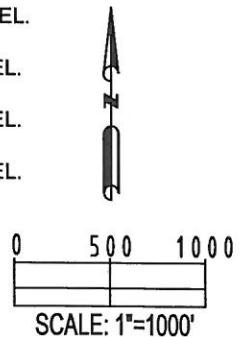


NOTES:

- THIS SURVEY WAS DONE BY GPS METHODS AND CONFORMS TO THE MINIMUM STANDARDS SET BY THE C.O.G.C.C., RULE NO. 215 (PDOP VALUE IS LESS THAN 6.0, LATITUDE AND LONGITUDE ARE ACCURATE TO 5 DECIMAL PLACES, AND GPS OBSERVATIONS ARE DIFFERENTIAL AND DONE BY QUALIFIED PERSONNEL.)
- ELEVATIONS SHOWN AT THE WELL HEAD, AS WELL AS HORIZONTAL CONTROL, ARE BASED ON GPS-RTK VALUES DERIVED FROM DOING 2-HOUR STATIC GPS SESSIONS AND REDUCTIONS USING O.P.U.S. SOLUTIONS.
VERTICAL = NAVD88; HORIZONTAL = NAD83/92
- THE BEARINGS SHOWN HEREON ARE BASED ON GPS OBSERVATIONS BETWEEN THE MONUMENTS SHOWN HEREON AS FOUND ON THE FIELD DATE BELOW.
- DISTANCES SHOWN ARE AT GROUND LEVEL, AS MEASURED IN THE FIELD, WITH TIES TO WELLS MEASURED AT A PERPENDICULAR TO SECTION LINES.

NOTES:

- STONEBRAKER 21-12 TO BE AT 1790' FNL, 2043' FEL. BOTTOM HOLE AT 1300' FNL & 2550' FEL.
- STONEBRAKER 8-12 TO BE AT 1805' FNL, 2045' FEL. BOTTOM HOLE AT 1980' FNL & 660' FEL.
- STONEBRAKER 6-12 A TO BE AT 1821' FNL, 2046' FEL. BOTTOM HOLE AT 1980' FNL & 1980' FWL.
- STONEBRAKER 24-12 TO BE AT 1837' FNL, 2048' FEL. BOTTOM HOLE AT 2500' FNL & 1350' FEL.
- STONEBRAKER 11-12 TO BE AT 1853' FNL, 2050' FEL. BOTTOM HOLE AT 1980' FSL & 1980' FWL.
- STONEBRAKER 25-12 TO BE AT 1869' FNL, 2051' FEL. BOTTOM HOLE AT 2550' FNL & 2550' FEL.
- GRAHAM #1 IS 1904' FNL & 2013' FEL.



REVISIONS

INITIAL	DATE
SMF	01-29-09

PREPARED BY:

PFS

Petroleum Field Services, LLC
1801 W. 13th Ave.
Denver, CO 80204



KERR-MCGEE OIL & GAS ONSHORE LP

FIELD DATE:
01-20-09

DRAWING DATE:
01-21-09

BY:
SMF

WELL NAME:

STONEBRAKER 21-12, 8-12, 6-12 A, 24-12, 11-12 & 25-12

SURFACE LOCATION:

WELD COUNTY, COLORADO
SW 1/4 NE 1/4, SEC. 12, T1N, R68W